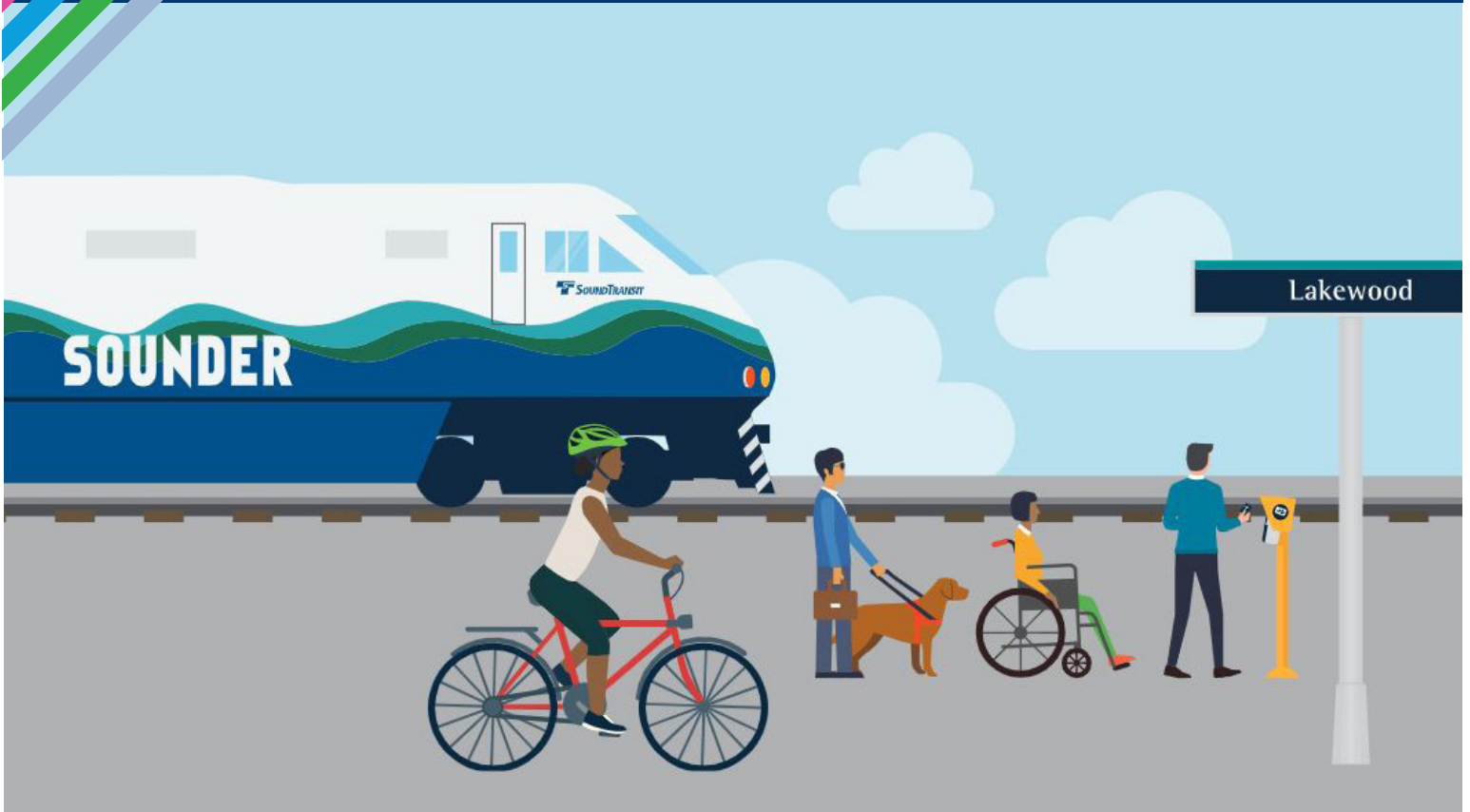




Lakewood Station

Access Improvements

July 2022



Planning better access to Lakewood Station

Sound Transit will be making improvements near Lakewood Station to make the Sounder train and regional bus service more convenient for everyone.

In 2021, with support from the City of Lakewood and input from the community, we identified potential improvements such as new sidewalks and bike lanes, upgraded bus stops, and more.

What's happening now?

We are working with the City of Lakewood on early design and conceptual engineering. We will also conduct an environmental process to evaluate possible impacts and benefits.

Stay involved!

We'll be reaching out later this year to get your feedback on the potential improvements.

In the meantime, learn more and sign up for updates at:

[soundtransit.org/lakewood-station-access](https://www.soundtransit.org/lakewood-station-access)

Email or call us:

Melanie Mayock, Community Engagement,
206-689-4877 or email:
melanie.mayock@soundtransit.org

Map on back →

Example improvements in Lakewood

Station area improvements

Would include station accessibility improvements for people with disabilities and non-English speakers, including:

- Improving wayfinding, adding a PA system, and installing tactile pavement.
- Adding a shelter for the ADA boarding ramp for people with disabilities or mobility devices, such as wheelchairs or walkers, and making curb ramp retrofits.
- Retrofitting the parking garage by adding micromobility parking (parking for electric scooters and bikes)

47th Ave S.W. bridge and sidewalk connections

- Reconfiguring the bridge to provide a five-foot sidewalk on the west side of the roadway and removing the sidewalk on the east side.
- North of the bridge, adding a sidewalk and a bike lane (southbound) on the west side of 47th Ave S.W.
- South of the bridge, adding and improving sidewalks on the west side of the street and adding sharrow

Bridgeport Way connections via 115th St. Ct. S.W.

Would improve connections between the transit stops on Bridgeport Way S.W. and the station via 115th St. Ct. S.W. These improvements include:

- Adding lighting to the bus stops on Bridgeport Way S.W.
- Adding a crosswalk or signalized pedestrian crossing on Bridgeport Way S.W. at 115th St. Ct. S.W.



This map shows some of the proposed improvements for accessing the Lakewood Station.

- Adding a sidewalk to the north side of the 115th St. Ct. S.W. This could involve the loss of about 20 on-street parking spaces.
- Adding sharrow on the 115th St. Ct. S.W. for bikes to share the street.
- Marking a pickup/drop-off area at the end of the cul de sac on 115th St. Ct. S.W.
- Providing a new trail connection from 115th St. Ct. S.W. to the pedestrian bridge connecting to the station.

Stay informed

Sign up for project updates: soundtransit.org/subscribe.

For more information about Sound Transit projects or services, visit soundtransit.org or call 800-201-4900 / TTY: 711.

For information in alternative formats, call 800-201-4900 / TTY: 711 or email accessibility@soundtransit.org.

Information in other languages

Para información acerca del proyecto llame al: 800-823-9230.

Follow us:   

 **SOUNDTRANSIT**