



ATTACHMENT F

Ground Photography



1. Commercial Land Cover Type



2. Residential Land Cover Type



3. Grassland Land Cover Type



4. Invasive Brush Land Cover Type



5. Native Brush Land Cover Type



6. Non-native Forest Land Cover Type



7. Native Forest Land Cover Type



8. River Channel Land Cover Type



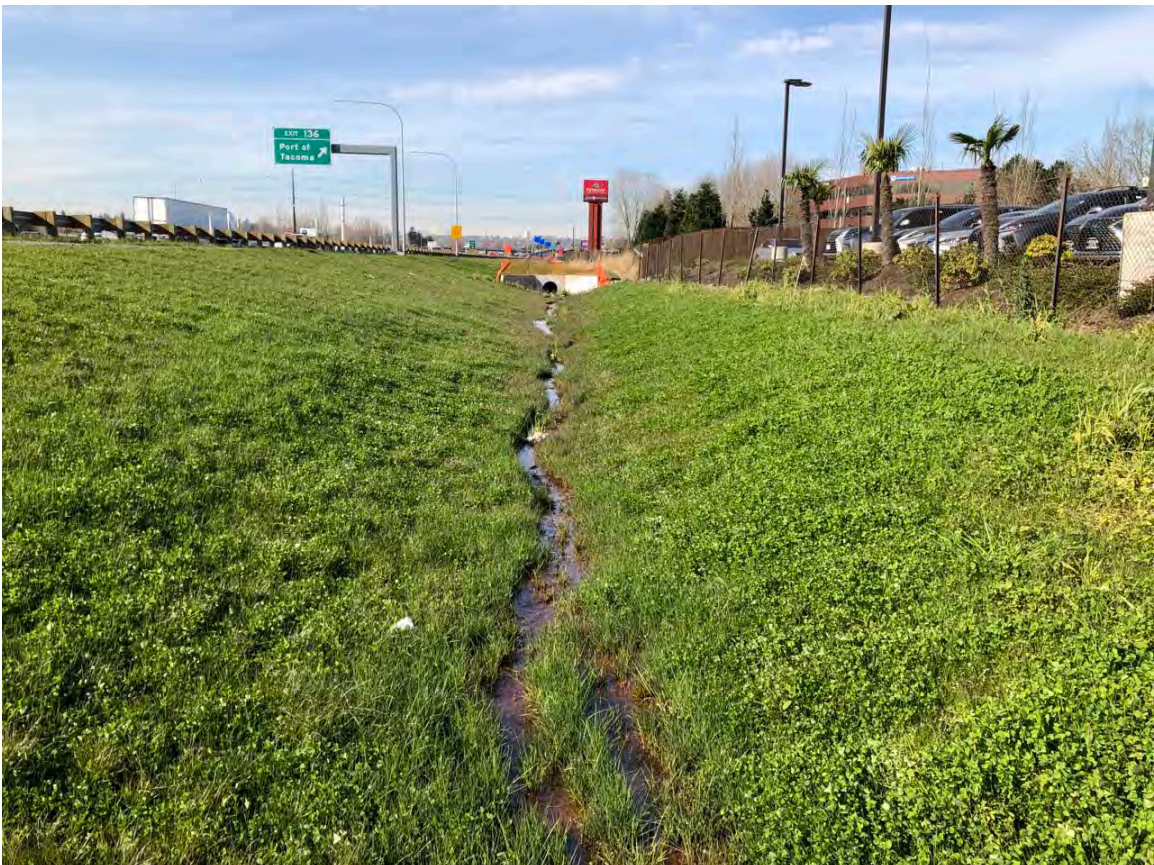
9. Stormwater Pond Land Cover Type



10. Forested Wetlands



11. Scrub-shrub Wetlands



12. Emergent Wetlands



13. East Fork Hylebos Creek Tributary 0016A



14. West Fork Hylebos Creek Tributary 0014C



15. West Fork Hylebos Creek



16. Federal Way Stream 1 (SFW-01)



17. Federal Way Stream 2 (SFW-02)



18. Federal Way Stream 3 (SFW-03)



19. Federal Way Stream 4 (SFW-04)



20. Middle Fork Hylebos Creek



21. Milton Stream 1 (SMI-01)



22. Milton Stream 2 (SMI-02)



23. Hylebos Creek



24. Surprise Lake Creek



25. Fife Ditch Tributary 1



26. Fife Ditch



27. Wapato Creek



28. Erdahl Ditch Tributary 1



29. Erdahl Ditch Tributary 2



30. Puyallup River



ATTACHMENT G

Common and Scientific Names of Animals and Plants

Attachment G Common and Scientific Names of Animals and Plants

Animals

Common Name	Scientific Name	Common Name	Scientific Name
Fish		Great Horned Owl	<i>Bubo virginianus</i>
Bull Trout	<i>Salvelinus confluentus</i>	Harbor Seal	<i>Phoca vitulina</i>
Chinook Salmon	<i>Oncorhynchus tshawytscha</i>	Hooded Merganser	<i>Lophodytes cucullatus</i>
Chum Salmon	<i>Oncorhynchus keta</i>	House Sparrow	<i>Passer domesticus</i>
Coastal Cutthroat Trout	<i>Oncorhynchus clarki clarki</i>	Keen's Myotis	<i>Myotis keenii</i>
Coho Salmon	<i>Oncorhynchus kisutch</i>	Marbled Murrelet	<i>Brachyramphus marmoratus</i>
Largescale Sucker	<i>Catostomus macrocheilus</i>	Meadow Vole	<i>Microtus pennsylvanicus</i>
Pacific Staghorn Sculpin	<i>Leptocottus armatus</i>	Myotis (Mouse-eared) Bats	<i>Myotis</i> spp.
Pink Salmon	<i>Oncorhynchus gorbuscha</i>	North American Wolverine	<i>Gulo gulo</i>
Prickly Sculpin	<i>Cottus asper</i>	Northern Flicker	<i>Colaptes auratus</i>
Sculpin	<i>Cottus</i> spp.	Oregon Vesper Sparrow	<i>Pooecetes gramineus affinis</i>
Sockeye Salmon	<i>Oncorhynchus nerka</i>	Osprey	<i>Pandion haliaetus</i>
Steelhead/Rainbow Trout	<i>Oncorhynchus mykiss</i>	Pileated Woodpecker	<i>Dryocopus pileatus</i>
Starry Flounder	<i>Platichthys stellatus</i>	Raccoon	<i>Procyon lotor</i>
Threespine Stickleback	<i>Gasterosteus aculeatus</i>	Red-breasted Nuthatch	<i>Sitta canadensis</i>
Western Brook Lamprey	<i>Lampetra richardsoni</i>	Red-tailed Hawk	<i>Buteo jamaicensis</i>
Yellow Perch	<i>Perca flavescens</i>	Rock Pigeon	<i>Columba livia</i>
Wildlife		Savannah Sparrow	<i>Passerculus sandwichensis</i>
American Crow	<i>Corvus brachyrhynchos</i>	Sharp-shinned Hawk	<i>Accipiter striatus</i>
American Kestrel	<i>Falco sparverius</i>	Song Sparrow	<i>Melospiza melodia</i>
American Robin	<i>Turdus migratorius</i>	Spotted Towhee	<i>Pipilo maculatus</i>
Band-tailed Pigeon	<i>Patagioenas fasciata</i>	Steller Sea Lion	<i>Eumetopias jubatus</i>
Barn Swallow	<i>Hirundo rustica</i>	Steller's Jay	<i>Cyanocitta stelleri</i>
Barrow's Goldeneye	<i>Bucephala islandica</i>	Streaked Horned Lark	<i>Eremophila alpestris strigata</i>
Bewick's Wren	<i>Thryomanes bewickii</i>	Swallowtail Butterfly	<i>Papilio</i> spp.
Big Brown Bat	<i>Eptesicus fuscus</i>	Taylor's Checkerspot	<i>Euphydryas editha taylori</i>
Black-capped Chickadee	<i>Poecile atricapillus</i>	Townsend's Big-eared Bat	<i>Corynorhinus townsendii</i>
Brant	<i>Branta bernicla</i>	Townsend's Mole	<i>Scapanus townsendii</i>
California Sea Lion	<i>Zalophus californianus</i>	Trumpeter Swan	<i>Cygnus buccinator</i>
Cliff Swallow	<i>Petrochelidon pyrrhonota</i>	Tundra Swan	<i>Cygnus columbianus</i>
Common Goldeneye	<i>Bucephala clangula</i>	Vaux's Swift	<i>Chaetura vauxi</i>
Common Loon	<i>Gavia immer</i>	Virginia Opossum	<i>Didelphis virginiana</i>
Cooper's Hawk	<i>Accipiter cooperii</i>	Voles	<i>Microtus</i> spp.
Coyote	<i>Canis latrans</i>	Western Grebe	<i>Aechmophorus occidentalis</i>
Deer (Black-tailed)	<i>Odocoileus hemionus columbianus</i>	Western Toad	<i>Anaxyrus boreas</i>
Eastern Gray Squirrel	<i>Sciurus carolinensis</i>	White-crowned Sparrow	<i>Zonotrichia leucophrys</i>
Ensatina	<i>Ensatina eschscholtzii</i>	Wood Duck	<i>Aix sponsa</i>
European Starling	<i>Sturnus vulgaris</i>	Yellow-billed Cuckoo	<i>Coccyzus americanus</i>
Great Blue Heron	<i>Ardea herodias</i>		

Plants

Common Name	Scientific Name ^a	Common Name	Scientific Name ^a
Austrian Pine	<i>Pinus nigra</i>	Lombardy Poplar	<i>Populus nigra</i>
Beaked Hazelnut	<i>Corylus cornuta</i>	Manna Grass	<i>Glyceria striata</i>
Bedstraw	<i>Galium</i> sp.	Marsh Sandwort	<i>Arenaria paludicola</i>
Bentgrass	<i>Agrostis</i> sp.	Nootka Rose	<i>Rosa nootkana</i>
Bigleaf Maple	<i>Acer macrophyllum</i>	Oregon Ash	<i>Fraxinus latifolia</i>
Bird Cherry	<i>Prunus avium</i>	Osoberry	<i>Oemleria cerasiformis</i>
Bittersweet Nightshade	<i>Solanum dulcamara</i>	Pacific Ninebark	<i>Physocarpus capitatus</i>
Black Cottonwood	<i>Populus trichocarpa</i> (syn: <i>P. balsamifera</i> ssp. <i>trichocarpa trichocarpa</i> ^b ; <i>P. balsamifera</i> ^c)	Pacific Willow	<i>Salix lasiandra</i> (syn: <i>S. lucida</i> ssp. <i>lasiandra</i> ^b)
Bluegrass	<i>Poa</i> sp.	Red Alder	<i>Alnus rubra</i>
Butterfly Bush	<i>Buddleja davidii</i>	Red Elderberry	<i>Sambucus racemosa</i>
Cattail	<i>Typha latifolia</i>	Red Fescue	<i>Festuca rubra</i>
Coastal Black Gooseberry	<i>Ribes divaricatum</i>	Red-osier Dogwood (also, Red Twig Dogwood)	<i>Cornus occidentalis</i> (syn: <i>C. sericea</i> ^b , <i>C. alba</i> ^c)
Colonial Bentgrass	<i>Agrostis capillaris</i>	Reed Canarygrass	<i>Phalaris arundinacea</i>
Common Rush	<i>Juncus effusus</i>	Salal	<i>Gaultheria shallon</i>
Common Snowberry	<i>Symphoricarpos albus</i>	Salmonberry	<i>Rubus spectabilis</i>
Common Velvetgrass	<i>Holcus lanatus</i>	Scotch Broom	<i>Cytisus scoparius</i>
Creeping Buttercup	<i>Ranunculus repens</i>	Scouler's Willow	<i>Salix scouleriana</i>
Cutleaf Blackberry (also, Evergreen Blackberry)	<i>Rubus laciniatus</i>	Serviceberry	<i>Amelanchier alnifolia</i>
Douglas-fir	<i>Pseudotsuga menziesii</i>	Sitka Willow	<i>Salix sitchensis</i>
Douglas Spiraea (also, Hardhack, Rose Spiraea)	<i>Spiraea douglasii</i>	Skunk Cabbage	<i>Lysichiton americanus</i>
English Ivy	<i>Hedera helix</i>	Slough Sedge	<i>Carex obnupta</i>
English Laurel	<i>Prunus laurocerasus</i>	Small-fruited Bulrush	<i>Scirpus microcarpus</i>
European Hawthorn	<i>Crataegus monogyna</i>	Snowberry	<i>Symphoricarpos albus</i>
European Mountain Ash	<i>Sorbus aucuparia</i>	Spotted Jewelweed	<i>Impatiens capensis</i>
Evergreen Huckleberry	<i>Vaccinium ovatum</i>	Stinging Nettle	<i>Urtica dioica</i>
Field Meadow Foxtail	<i>Alopecurus pratensis</i>	Sword Fern	<i>Polystichum munitum</i>
Giant Horsetail	<i>Equisetum telmateia</i>	Tall Fescue	<i>Schedonorus arundinaceus</i>
Golden Paintbrush	<i>Castilleja levisecta</i>	Twinberry	<i>Lonicera involucrata</i>
Himalayan Blackberry	<i>Rubus bifrons</i> (syn: <i>R. armeniacus</i> ^{b, c})	Two-leaf False Solomon's Seal	<i>Maianthemum racemosum</i>
Kentucky Bluegrass	<i>Poa pratensis</i>	Velvet Grass	<i>Holcus lanatus</i>
Knotweed	<i>Reynoutria japonica</i>	Vine Maple	<i>Acer circinatum</i>
Lady Fern	<i>Athyrium filix-femina</i> ssp. <i>cyclosorum</i> (syn: <i>A. cyclosorum</i> ^c)	Western Hemlock	<i>Tsuga heterophylla</i>
		Western Redcedar	<i>Thuja plicata</i>
		Willow	<i>Salix</i> sp.
		Yellow-flag Iris	<i>Iris pseudacorus</i>

^a Source: Hitchcock, C., A. Cronquist, J. Janish, J. Rumely, C. Shin, and N. Porcino. 2018. Flora of the Pacific Northwest: An illustrated manual (D. Gibling, B. Legler, P. Zika, and R. Olmstead, eds.). Seattle: University of Washington Press.

^b USDA (U.S. Department of Agriculture), NRCS (Natural Resources Conservation Service). 2016. The PLANTS database (<http://plants.usda.gov>, February 14, 2020). National Plant Data Team, Greensboro, NC.

^c Lichvar, R.W., D.L. Banks, W.N. Kirchner, and N.C. Melvin. 2016. The national wetland plant list: 2016 wetland ratings. Phytoneuron 30: 1-17.