

Attachment N.4D
Ecosystem Photographs

This page is intentionally left blank.

Attachment N.4D Ecosystem Photographs

This appendix contains site photographs of wetlands, streams, and wildlife habitat, obtained during field surveys in 2019, 2020, 2022, and 2023.

- Figure N4.D-1. Wetland WSE1
- Figure N4.D-2. Wetland WSE2 and Longfellow Creek
- Figure N4.D-3. Wetland WSE3
- Figure N4.D-4. Wetland WSE4
- Figure N4.D-5. Longfellow Creek – Golf Course
- Figure N4.D-6. Longfellow Creek – Southwest Nevada Street Overpass
- Figure N4.D-7. Longfellow Creek – Southwest Andover Street
- Figure N4.D-8. Duwamish Waterway – East Waterway
- Figure N4.D-9. Duwamish Waterway – Rail Bridge over West Waterway
- Figure N4.D-10. Vegetation in the West Seattle Golf Course
- Figure N4.D-11. Vegetation at the Longfellow Creek Natural Area
- Figure N4.D-12. Delridge Community Center and Playfield
- Figure N4.D-13. Vegetation below West Seattle Bridge Overpass
- Figure N4.D-14. West Duwamish Greenbelt by West Seattle Bridge Overpass
- Figure N4.D-15. Great Blue Heron Rookery at West Duwamish Greenbelt
- Figure N4.D-16. Duwamish Waterway Shoreline – Harbor Marina Corporate Center
- Figure N4.D-17. Vegetation Adjacent to Southwest Andover Street (south side)
- Figure N4.D-18. Longfellow Creek Area – Buffer Area on East Side of Creek near Southwest Yancy Street
- Figure N4.D-19. Longfellow Creek Area – Buffer Area on West Side of Creek near Southwest Yancy Street
- Figure N4.D-20. Longfellow Creek between Southwest Dakota and Southwest Yancy Streets
- Figure N4.D-21. Wetland WSE11 near Longfellow Creek and Southwest Yancy Street
- Figure N4.D-22. Wetlands WSE12 and WSE13 near Longfellow Creek and Southwest Yancy Street
- Figure N4.D-23. Beaver Dam in Longfellow Creek at Wetland WSE2
- Figure N4.D-24. Longfellow Creek Culvert – Southwest Genesee Street

Figure N4.D-1. Wetland WSE1

Facing north, west of the West Seattle Golf Course 18th fairway, taken July 15, 2019.



Figure N4.D-2. Wetland WSE2 and Longfellow Creek

Facing north in ravine by the 13th golf hole, taken July 15, 2019.



Figure N4.D-3. Wetland WSE3

Facing south, by the water control structure in Longfellow Creek, taken July 15, 2019.



Figure N4.D-4. Wetland WSE4

Facing west, from atop the retaining wall under the West Seattle Bridge overpass, taken May 29, 2019.



Figure N4.D-5. Longfellow Creek – Golf Course

Facing upstream in ravine by the 13th hole, taken July 15, 2019.



Figure N4.D-6. Longfellow Creek – Southwest Nevada Street Overpass

South of the Southwest Nevada Street overpass, facing downstream, taken July 15, 2019.



Figure N4.D-7. Longfellow Creek – Southwest Andover Street
Facing upstream from Southwest Andover Street, taken January 23, 2020.



Figure N4.D-8. Duwamish Waterway – East Waterway
Looking east from the Port of Seattle’s Harbor Marina Corporate Center, taken October 10, 2019.



Figure N4.D-9. Duwamish Waterway – Rail Bridge over West Waterway
Looking west from Port of Seattle’s Harbor Marina Corporate Center, taken October 10, 2019.



Figure N4.D-10. Vegetation in the West Seattle Golf Course
Facing Longfellow Creek, Wetland WSE2, and 13th hole green, taken July 15, 2019.



Figure N4.D-11. Vegetation at the Longfellow Creek Natural Area
Looking west on Southwest Genesee Street, taken October 10, 2019.



Figure N4.D-12. Delridge Community Center and Playfield
From Southwest Genesee Street and 26th Avenue Southwest, taken October 10, 2019.



Figure N4.D-13. Vegetation below West Seattle Bridge Overpass
Facing east, taken May 29, 2019.

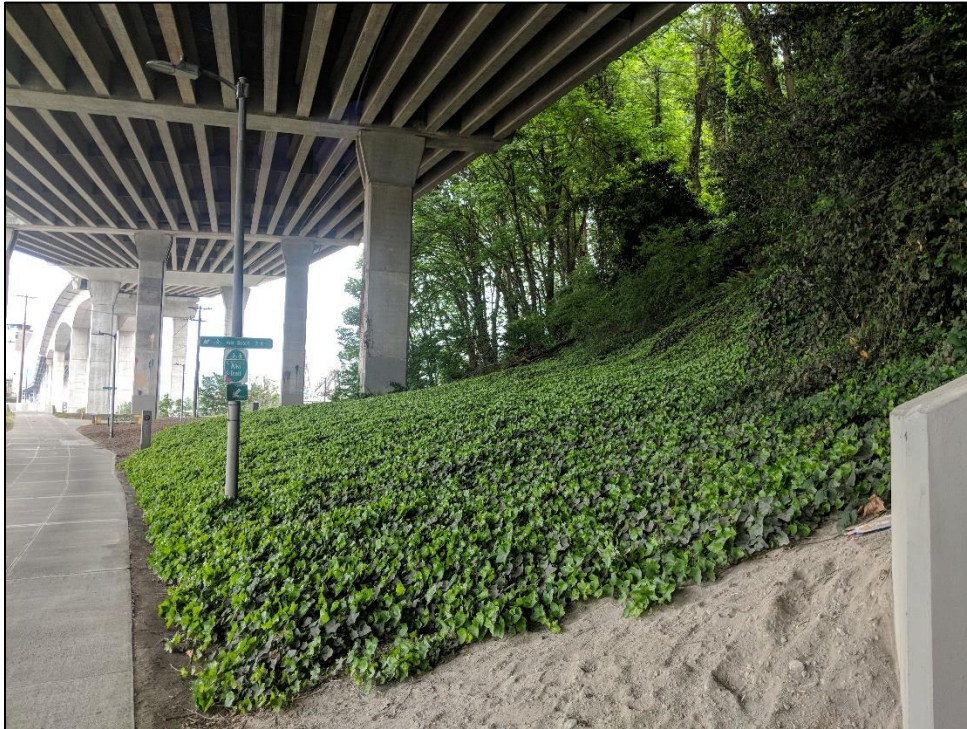


Figure N4.D-14. West Duwamish Greenbelt by West Seattle Bridge Overpass
Facing northwest, taken October 10, 2019.

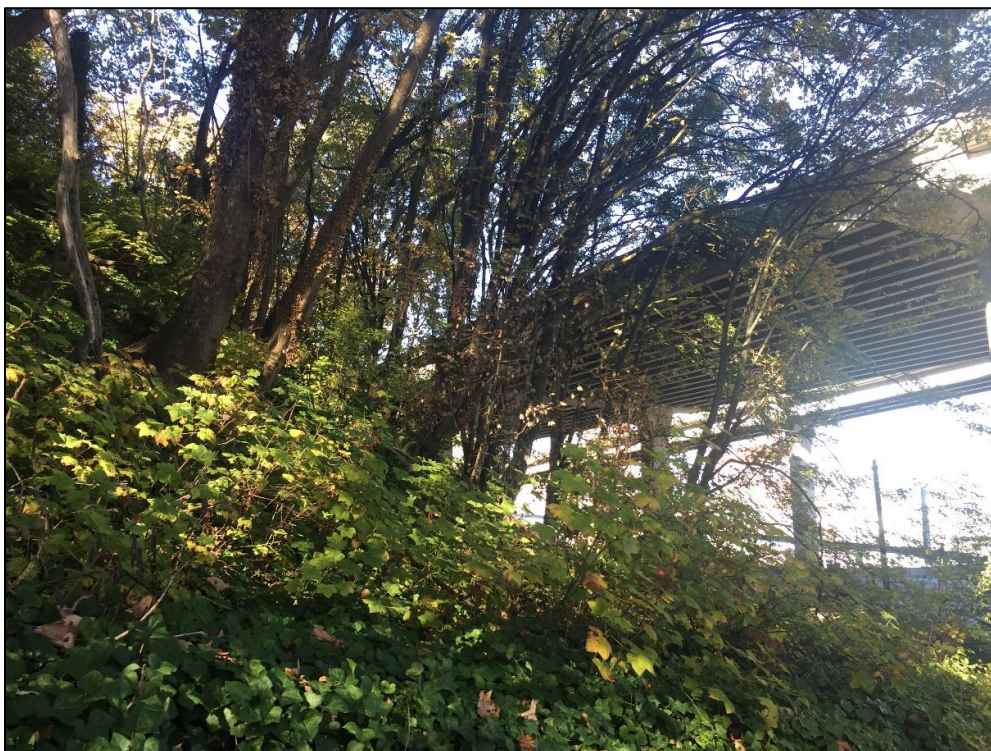


Figure N4.D-15. Great Blue Heron Rookery at West Duwamish Greenbelt
From stairwell trail, taken May 14, 2019.



Figure N4.D-16. Duwamish Waterway Shoreline – Harbor Marina Corporate Center
Around corporate center, taken October 10, 2019.



Figure N4.D-17. Vegetation Adjacent to Southwest Andover Street (south side)
Taken January 23, 2020.



Figure N4.D-18. Longfellow Creek Area – Buffer Area on East Side of Creek near Southwest Yancy Street

Looking north from Yancy Pedestrian Bridge, taken October 1, 2022.



Figure N4.D-19. Longfellow Creek Area – Buffer Area on West Side of Creek near Southwest Yancy Street

Looking north from Yancy Pedestrian Bridge, taken October 1, 2022.



Figure N4.D-20. Longfellow Creek between Southwest Dakota and Southwest Yancy Streets

Looking north towards Yancy Pedestrian Bridge, taken October 1, 2022.



Figure N4.D-21. Wetland WSE11 near Longfellow Creek and Southwest Yancy Street

Taken February 10, 2023.



Figure N4.D-22. Wetlands WSE12 and WSE13 near Longfellow Creek and Southwest Yancy Street

Taken February 10, 2023.



Figure N4.D-23. Beaver Dam in Longfellow Creek at Wetland WSE2

Photo taken November 25, 2019.



Figure N4.D-24. Longfellow Creek Culvert – Southwest Genesee Street
Culvert inlet on the golf course, taken October 10, 2019.

