



King Street Station Platform Area Improvements

Summer 2024 Engagement Summary

Executive summary

Sound Transit is studying how to make King Street Station more accessible and ready to serve more Sounder riders in the years ahead as part of the [Sounder South Capacity Expansion](#) program. As a primary destination for Sounder riders from the north ([N Line](#), four daily roundtrips) and the south ([S Line](#), 13 daily roundtrips), King Street Station in downtown Seattle is an important hub for thousands of daily passengers each weekday and during special events.

In April 2022, we asked for public input on potential improvements to King Street Station including adding more stairs and elevators, a street-level concourse above the platform to provide connections to the surrounding area, and a longer platform. As we continue to refine our plans for these proposed improvements, we launched a new engagement period in July 2024 to gather feedback on four potential pedestrian connections to and from the station. We hosted an online open house from July 12 – Sept. 30 with graphics showing early design concepts for pedestrian connections and a short survey. The online open house was available in English, Spanish, Vietnamese, Traditional Chinese, and Simplified Chinese, and drew over 1,950 visitors. During the online open house period, we reached Sounder riders through email updates, social media posts, and a tabling event at King Street Station on Aug. 8. We increased our visibility in the local community by displaying posters throughout Chinatown-International District and Pioneer Square, in addition to working with the [Ballard Link Extension](#) team and the City of Seattle [South Downtown Hub](#) team to promote the survey.

The online survey was completed by over 150 people and most feedback was neutral, showing no strong support or opposition to the proposed pedestrian connections. Common themes included support for



Over 1,950 users visited the online open house from July 12 – Sept. 30



More than 150 people completed the online survey



Engaged with over 50 people and shared over 640 flyers during a tabling event at King Street Station



2 project email updates sent to more than 1,750 recipients



1 Tweet, 1 Facebook post, 2 rounds of targeted in-language ads, and 1 press release



Displayed more than 600 posters in the Chinatown-International District and Pioneer Square neighborhoods

King Street Station Platform Area Improvements

improved access to the station, support for enhanced pedestrian safety at existing and proposed crossings, and desire for direct connections to nearby transit. We will use this feedback to inform future refinements.

We will continue design and engineering work and identify potential environmental effects, such as impacts on visual or historic resources and traffic patterns. This may result in changes to the proposed improvements shared during this engagement period. We anticipate publishing a State Environmental Policy Act checklist with the findings of our environmental review in 2025. We will continue to coordinate with the Ballard Link Extension project team and the City of Seattle on plans for developing this area, and we anticipate completing King Street Station Platform Area Improvements by 2036.

Resumen de la participación de verano de 2024

Resumen ejecutivo

Sound Transit estudia la manera de hacer que la estación King Street sea más accesible y esté preparada para servir a más pasajeros de Sounder en los próximos años como parte del programa de [Ampliación de la capacidad de Sounder](#). Como destino principal para los pasajeros de Sounder del norte ([la N Line](#), cuenta con 4 viajes de ida y vuelta al día) y del sur ([la S Line](#), cuenta con 13 viajes de ida y vuelta diarios), la estación de King Street en el centro de Seattle es un importante centro neurálgico para miles de pasajeros cada día entre semana y durante los eventos especiales.

En abril del 2022, pedimos información pública para llevar a cabo posibles mejoras en la estación King Street, que incluía añadir más escaleras y ascensores, un vestíbulo a nivel de la calle sobre la plataforma para proporcionar conexiones con el área circundante y una plataforma más larga. A medida que seguimos perfeccionando nuestros planes para estas mejoras propuestas, lanzamos un nuevo período de participación en julio del 2024 para conocer la opinión de los usuarios sobre cuatro posibles conexiones peatonales hacia y desde la estación. Organizamos una jornada de puertas abiertas en línea del 12 de julio al 30 de septiembre con gráficos que mostraban los primeros conceptos de diseño para conexiones peatonales e incluía una breve encuesta. La jornada de puertas abiertas en línea estuvo disponible en inglés, español, vietnamita, chino tradicional y chino simplificado, y atrajo a más de 1950 visitantes. Durante el período de puertas abiertas en línea, llegamos a los pasajeros de Sounder a través de actualizaciones por correo electrónico, publicaciones en redes sociales y un evento de presentación en la estación King Street el 8 de agosto. Hemos aumentado nuestra visibilidad en la comunidad mediante la exhibición de carteles en el distrito Internacional de Chinatown y Pioneer Square, además de trabajar con el equipo de [Ballard Link Extension](#) y el equipo de la ciudad de Seattle [South Downtown Hub](#) para promover la encuesta.

Más de 150 personas completaron la encuesta en línea y la mayoría de los comentarios fueron neutrales (no hubo ningún fuerte apoyo ni oposición a las conexiones peatonales propuestas). Los temas comunes incluyeron el apoyo para mejorar el acceso a la estación, la seguridad de los peatones en los cruces



Más de 1.950 usuarios participaron en el recorrido virtual del 12 de julio al 30 de septiembre



Más de 150 personas completaron la encuesta



Se interactuó con más de 50 personas, y se distribuyeron más de 640 folletos durante un evento informativo en la estación de King Street



2 actualizaciones del proyecto enviadas por correo electrónico a más de 1.750 destinatarios



1 Tweet, 1 publicación de Facebook, 2 campañas de anuncios en el idioma elegido, y 1 comunicado de prensa



Se colocaron más de 600 carteles en los vecindarios de Chinatown-International District y Pioneer Square

King Street Station Platform Area Improvements

existentes y en los cruces propuestos y el deseo de tener conexiones directas con el tránsito cercano. Vamos a usar estos comentarios para informar sobre mejoras futuras.

Vamos a seguir trabajando en el diseño e ingeniería y vamos a identificar posibles efectos ambientales, como impactos en los recursos visuales o históricos y patrones de tráfico. Esto puede dar lugar a cambios en las mejoras propuestas compartidas durante este período de compromiso. Esperamos publicar una lista de verificación de la Ley de Política Ambiental Estatal con los resultados de nuestra revisión ambiental en 2025. Vamos a seguir coordinando con el equipo del proyecto de Extensión de Ballard Link y la Ciudad de Seattle los planes para desarrollar esta área y anticipamos que realizaremos mejoras de la zona de la plataforma de la estación King Street en el 2036.

Tóm Tắt Khảo Sát Mùa Hè Năm 2024

Tóm tắt chung của dự án

Sound Transit đang nghiên cứu cách thức nhằm giúp cho Ga King Street trở nên dễ tiếp cận hơn, và sẵn sàng phục vụ nhiều hành khách Sounder hơn trong những năm tới, như một phần của chương trình [Mở Rộng Khả Năng Phục Vụ Sounder South](#). Là điểm đến chính cho hành khách Sounder từ phía Bắc ([Tuyến N](#), bốn chuyến khứ hồi mỗi ngày) và phía Nam ([Tuyến S](#), 13 chuyến khứ hồi mỗi ngày), Ga King Street trong trung tâm thành phố Seattle là một nơi trung chuyển quan trọng cho hàng ngàn hành khách mỗi ngày trong tuần và trong nhiều sự kiện đặc biệt.

Vào tháng 4 năm 2022, chúng tôi đã tổ chức một cuộc khảo sát để thu thập ý kiến cộng đồng về việc cải thiện cơ sở vật chất tại Ga King Street. Một số ý tưởng bao gồm: tăng cường hệ thống cầu thang và thang máy, xây dựng một hành lang đường phố trên nền tảng để kết nối với khu vực xung quanh, và mở rộng chiều dài của nền tảng.

Trong khi tiếp tục hoàn thiện kế hoạch cho các cải tiến đề xuất, chúng tôi đã tổ chức một đợt khảo sát mới vào tháng 7 năm 2024, nhằm thu thập ý kiến phản hồi về bốn phương án kết nối người đi bộ vào và ra ga. Chúng tôi đã tổ chức một sự kiện trực tuyến mở từ ngày 12 tháng 7 đến 30 tháng 9 để mời cộng đồng tham gia đóng góp ý kiến. Tại sự kiện này, chúng tôi đã trình bày các bản vẽ thiết kế sơ bộ cho các phương án kết nối người đi bộ và tiến hành một cuộc khảo sát nhanh. Sự kiện trực tuyến mở được cung cấp bằng tiếng Anh, tiếng Tây Ban Nha, tiếng Việt, tiếng Trung Phồn Thể và tiếng Trung Giản Thể, và thu hút hơn 1.950 lượt truy cập. Trong suốt thời gian diễn ra sự kiện trực tuyến mở, chúng tôi đã tích cực quảng bá đến hành khách Sounder qua nhiều kênh như email, mạng xã hội và một sự kiện trực tiếp tại Ga King Street vào ngày 8 tháng 8. Chúng tôi đã đẩy mạnh hoạt động truyền thông tại địa phương bằng cách treo áp phích khắp Khu Phố Tàu-Quận Quốc Tế và Quảng Trường Pioneer, đồng thời hợp tác với nhóm [Mở Rộng Tuyến Ballard Link](#) và nhóm [Trung Tâm South Downtown](#) của Thành Phố Seattle để quảng bá cuộc khảo sát.

Cuộc khảo sát trực tuyến thu hút hơn 150 người tham gia và kết quả cho thấy phần lớn ý kiến đều khá trung lập, không có sự nghiêng về việc ủng hộ hay phản đối các phương án kết nối người đi bộ mới. Đa số người tham gia đều bày tỏ sự ủng hộ đối với việc nâng cao khả năng tiếp cận ga, đảm bảo an toàn giao thông cho người đi bộ tại các điểm giao cắt hiện tại và đề xuất, và mong muốn có thêm các tuyến



Hơn 1.950 người dùng đã truy cập vào ngày hội mở cửa trực tuyến từ ngày 12 tháng 7 đến ngày 30 tháng 9



Hơn 150 người đã hoàn thành khảo sát trực tuyến



Đã giao tiếp với hơn 50 người và phát hơn 640 tờ rơi trong một sự kiện giới thiệu tại Ga King Street



Đã gửi 2 bản cập nhật dự án qua email đến hơn 1.750 người nhận



1 bài đăng trên Tweet, 1 bài đăng trên Facebook, 2 chiến dịch quảng cáo nhắm mục tiêu bằng ngôn ngữ và 1 thông cáo báo chí



Đã trưng bày hơn 600 áp phích tại các khu phố Chinatown-International District và Pioneer Square

King Street Station Platform Area Improvements

đường kết nối trực tiếp với các phương tiện công cộng gần đó. Chúng tôi sẽ dựa trên những phản hồi này nhằm cải thiện các dịch vụ/sản phẩm trong tương lai.

Chúng tôi sẽ tiếp tục hoàn thiện thiết kế, thực hiện các đánh giá kỹ thuật và xác định toàn diện các tác động tiềm ẩn đến môi trường, bao gồm cả cảnh quan, di tích lịch sử và giao thông. Việc này có thể khiến chúng tôi cần điều chỉnh một số cải tiến đã đề xuất trong đợt khảo sát này. Chúng tôi dự kiến công bố một danh sách kiểm tra đánh giá môi trường theo quy định của Đạo Luật Chính Sách Môi Trường Tiểu Bang vào năm 2025. Chúng tôi sẽ tiếp tục phối hợp với nhóm dự án Mở Rộng Tuyến Ballard Link và Thành Phố Seattle để cùng nhau phát triển khu vực này, đồng thời chúng tôi đặt mục tiêu hoàn thành Cải Tiến Khu Vực Nền Tầng Ga King Street vào năm 2036.

2024 年夏季參與活動摘要

執行摘要

作為 [Sounder South 容量擴展計畫](#) 的一部分，Sound Transit 正在研究如何提高 King Street 車站的便利性，並準備在未來為更多的 Sounder 乘客提供服務。作為來自北部（[N 線](#)，每天往返 4 次）和南部（[S 線](#)，每天往返 13 次）的 Sounder 乘客的主要目的地，位於西雅圖市中心的 King Street 車站是每個工作日和特殊活動期間成千上萬乘客的重要樞紐。

2022 年 4 月，我們就 King Street 車站的潛在改善徵求公眾意見，包括增加更多的樓梯和電梯、在月台上方修建街道大廳以連接周邊地區，以及延伸月台。隨著我們不斷完善這些擬議的改善計畫，我們在 2024 年 7 月啟動了一個新的參與期，以收集關於擬建四條進出車站的行人通道的回饋意見。我們從 7 月 12 日到 9 月 30 日舉行了線上諮詢會，在會上展示了行人通道的早期設計概念效果圖，並分發了一份簡短的調查。線上諮詢會提供英語、西班牙語、越南語、繁體中文和簡體中文版本，吸引了超過 1,950 名訪客。在線上諮詢會期間，我們透過電子郵件更新、社群媒體帖子和 8 月 8 日在 King Street 車站舉行的擺攤設點活動，與 Sounder 乘客取得聯絡。我們透過在唐人街-國際區 (Chinatown-International District) 和先鋒廣場 (Pioneer Square) 張貼海報來提高我們在當地社區的知名度。此外，我們還與 [Ballard Link 擴展](#) 團隊和西雅圖市 [South Downtown 樞紐](#) 團隊合作來推廣這項調查。

超過 150 人完成了這項線上調查，大多數回饋意見是中立的，並未對擬建的行人通道表示強烈的支持或反對。共同主題包括支援改善通往車站的通道、支援在現有和擬議的十字路口加強行人安全，以及希望與附近的交通直接接駁。我們將利用這些回饋意見，為今後的改進提供參考。

我們將繼續進行設計和工程工作，並確定潛在的環境影響，例如對視覺或歷史資源及交通模式的影響。這可能會導致在該參與期間分享的擬議改善發生變化。我們預計在 2025 年發佈一份《州環境政策法案》檢查清單，其中包含我們的環境審查結果。我們將繼續與 Ballard Link 擴展專案團隊和西雅圖市就開發該區域的計畫進行協調。我們預計到 2036 年完成 King Street 車站月台區域的改善工作。



超過 1,950 名用戶在 7 月 12 日 - 9 月 30 日期間造訪了網上開放日



逾 150 人完成了網上問卷調查



在國王街站的攤位活動接觸了超過 50 人並分享了逾 640 張傳單



向 1,750 多位收件人發出了 2 封有關項目的電郵更新



1 則推文、1 個 Facebook 帖子、2 輪目標語言廣告以及 1 篇新聞稿



在中國城國際區及拓荒者廣場社區貼出了超過 600 張海報

2024 年夏季参与情况摘要

执行摘要

作为 [Sounder South 运力扩展计划](#) 的一部分，Sound Transit 正研究如何提高国王街站的便利性和可达性，以便在未来几年为更多的 Sounder 乘客提供服务。西雅图市中心的国王街站是来自北部（[N 线](#)，每天 4 趟往返车次）和南部（[S 线](#)，每天 13 趟往返车次）Sounder 乘客的主要目的地，作为重要的交通枢纽，在每个工作日和特殊活动期间每天服务成千上万名乘客。

2022 年 4 月，我们就国王街站的拟议改进征求了公众意见，包括增加楼梯和电梯、在站台上修筑临街大厅连接周边地区以及延长站台长度。在我们继续完善这些拟议改进计划的同时，我们于 2024 年 7 月启动新的参与期，收集关于拟建四条往返车站行人通道的反馈意见。我们于 7 月 12 日至 9 月 30 日组织了一次在线开放日活动，展示了行人通道早期设计概念图表，并进行了简短的问卷调查。在线开放日活动提供英语、西班牙语、越南语、繁体中文和简体中文，吸引了超过 1,950 名访客。在线开放日期间，我们通过电子邮件更新、社交媒体发帖以及 8 月 8 日在国王街站举办的摆摊活动向 Sounder 乘客进行了宣传。我们在唐人街国际区和拓荒者广场张贴海报提高我们在当地社区的知名度，并与 [Ballard Link 扩展项目](#) 团队和西雅图市 [南市中心枢纽](#) 团队携手推广调查。

超过 150 人完成了在线调查，大多数反馈持中立态度，没有对拟建行人通道表现出强烈支持或反对。共同主题包括支持改善通往车站的交通、支持加强现有和拟建人行横道的行人安全，以及希望与附近交通系统直接连接。我们将参考这些反馈意见开展今后的改进工作。

我们将继续开展设计和工程工作，并确定潜在的环境影响，例如对视觉或历史资源以及交通模式的影响。这可能会导致本次参与期间分享的拟议改进发生变化。我们预计将在 2025 年发布一份《州环境政策法案》检查清单，并附上我们的环境评审结果。我们将继续与 Ballard Link 扩展项目团队和西雅图市协调开发该地区的计划，并预计在 2036 年完成国王街站站台区改进工程。



7 月 12 日至 9 月 30 日期间，超过 1950 名用户访问了在线招待会。



超过 150 人完成了在线调查



有 50 多人参与了在国王街车站举行的摊位活动，发出了 640 多份传单



向 1 750 多位收件人发送了 2 封项目更新电子邮件



发布了 1 篇 Tweet、1 篇 Facebook 帖子、2 轮有针对性的语言广告和 1 篇新闻稿



在唐人街国际区和拓荒者广场社区张贴了 600 多张海报

Table of Contents

<i>Executive summary</i>	1
<i>Engagement activities</i>	10
<i>Summary of feedback</i>	12
<i>Concourse to King Street Station Plaza and 2nd Ave Extension</i>	13
<i>Concourse to 4th Ave South near Union Station</i>	13
<i>Weller Street crosswalk improvements</i>	14
<i>South end platform extension to 4th Ave South at Seattle Boulevard</i>	14
<i>Next steps</i>	15
<i>Frequently Asked Questions</i>	17
<i>Appendices</i>	19

Engagement activities

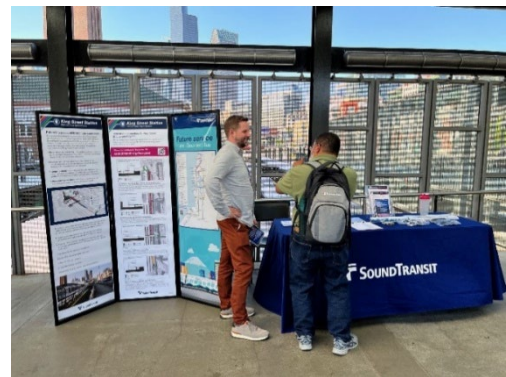
Online open house (soundtransit.org/kss-plan)

Sound Transit hosted an online open house from July 12 – Sept. 30. The full website was available in English, Spanish, Vietnamese, and Simplified and Traditional Chinese. The online open house contained information about the existing conditions, potential improvements, and a preview of early designs for new pedestrian connections to and from King Street Station (see Appendix B). The website also included frequently asked questions and a survey about the potential pedestrian connections. More than 1,950 people visited the online open house and over 150 completed the survey.

Tabling event

On Aug. 7, we hosted a pop-up tabling event on the Weller Street Bridge at King Street Station. The table setup included displays with project information that primarily focused on the potential pedestrian connections and materials about Sound Transit services.

We engaged with over 50 people in conversation about the project and listened to comments and questions, in addition to handing out over 640 flyers to promote the online open house and survey.



The King Street Station Platform Area Improvements team hosted a tabling event at the station to connect with Sounder riders about proposed improvements.

Outreach collaboration with other projects

We staffed an information table at a South Downtown Hub workshop on July 17. South Downtown Hub is a planning effort between Sound Transit, King County, and the City of Seattle for an integrated transportation future for Chinatown-International District and Pioneer Square. We also shared flyers for the South Downtown Hub project team to distribute during community briefings on Aug. 19, Aug. 28., Sept. 20, and Sept. 25 (see Appendix C).

We collaborated with Ballard Link Extension project team to increase local awareness of the King Street Station online open house and survey by providing flyers to display and hand out at community festivals on Aug. 10, Aug. 17, and Sept. 21.

King Street Station Platform Area Improvements

Notifications

We promoted the engagement period to riders with signs displayed at the station and on Sounder trains. We also sent two email updates through the Sounder South Capacity Expansion project listserv with more than 1,750 subscribers, issued a [press release](#), and shared posts on Facebook and Twitter/X.

In the effort to broaden our outreach to the diverse communities around the station, our Sound Transit social media team coordinated targeted in-language ads on Facebook from Aug. 12 – 26 and from Sept. 23 – 27. The ads generated over 26,700 impressions and 400 clicks to the online open house link.

Additionally, we engaged marketing agency PosterGiant to display posters with in-language translations on 300 poles from Sept. 10 – 30 throughout the Chinatown-International District and Pioneer Square neighborhoods. See Appendix D for examples of the notification materials used.



Our project team postered utility poles in the neighborhoods surrounding King Street Station as part of an effort to engage the local community.

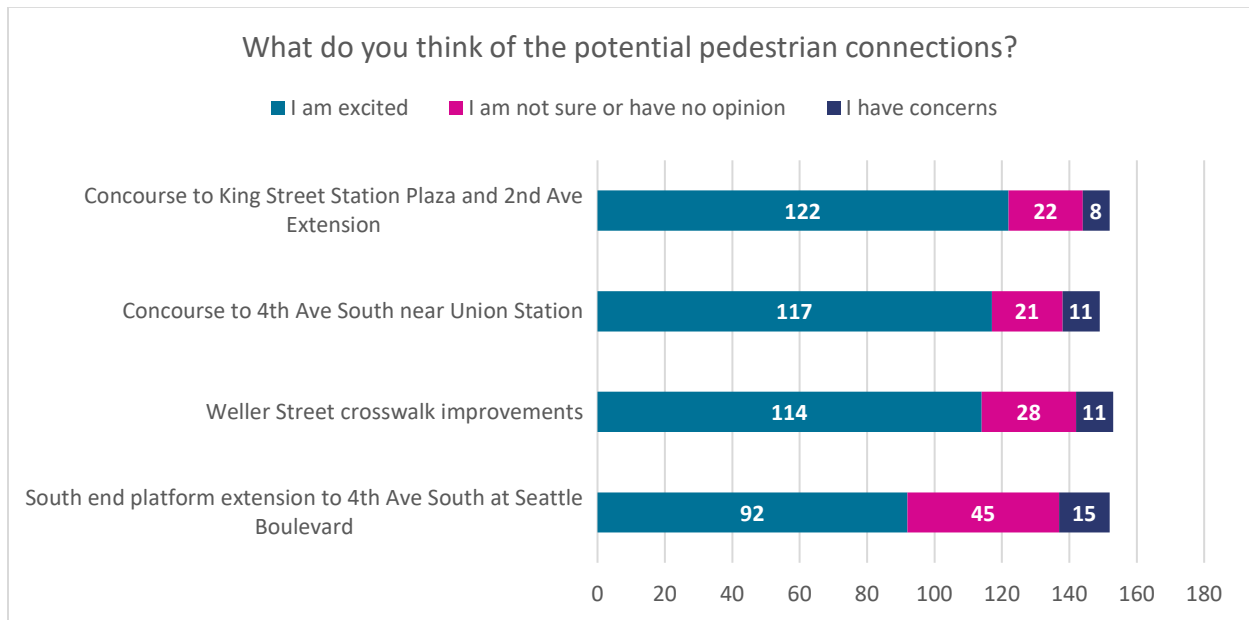
Summary of feedback

The objective of our public engagement was to gather feedback on four potential pedestrian connections that may become direct street-level access points from the surrounding streets to the new concourse level at King Street Station. We started by asking respondents to share their impressions of each proposed connection using a multiple-choice format. The results in the table below are based on a total of 153 responses.

We also asked respondents to share their thoughts about the potential pedestrian connections and what they would like us to consider as we continue to advance engineering and design (see Appendix B). The feedback below includes themes from over 150 responses to the online open house survey. Some sample quotes from participant responses are included in italics.



The four potential pedestrian connections that were the focus of the engagement period.



Concourse to King Street Station Plaza and 2nd Ave Extension

We received over 45 comments about the proposed connection. Many (over 44%) supported a new street-level walkway from the concourse to King Street Station Plaza and 2nd Ave Extension. A smaller percentage of comments (~21%) disapproved of the improvement or said it did not impact them personally.

Common themes included desire for direct connections to the station (19 comments), support for improved Americans with Disabilities Act accessibility (14 comments), and concerns about pedestrian safety (6 comments).

"Yes, this would be huge! The two current access options create more street crossings for people. Adding this direct access would be great."

"Easier & shorter access between Jackson St and the platform would be appreciated for passengers who need to use an elevator."

"This area is incredibly pedestrian unfriendly, so without additional improvements, including traffic calming, I'm not highly in favor of this"

"The main concern with this proposal is the walking path on 2nd Ave. If 2nd Ave ends up being shut down as a pedestrian path, then ADA will not be a concern, but I don't see how a wheelchair could get around the proposed entry along there."

Concourse to 4th Ave South near Union Station

We received 47 comments about the proposed connection. Many (over 45%) were neutral; commenters generally understood the need for a new street-level walkway over the tracks connecting from the concourse 4th Ave S. A smaller percentage of comments (~39%) supported the improvement.

Common themes included integration with nearby transit (17 comments), concerns about traffic and pedestrian safety (10 comments), and support for improved accessibility (6 comments).

"This is a great way to establish more of a front door to the station and integrate it more with both King Street and Union Station, as well as providing a more obvious route for newcomers or transfers between the Link station, Sounder, and Amtrak."

"My worry would be about what traffic improvements would be made to 4th St. Even waiting at Weller St. Bridge takes quite a while and vehicles tend to block the crosswalk regularly on busier days. While I like the idea, a lot would need to be invested to properly halt vehicle traffic."

"This elevator would be very helpful since currently the mini-high platform is at north end of train and it forces disabled people with elevator needs to go to the total opposite end of the station."

Weller Street crosswalk improvements

We received 43 comments about proposed improvements to the existing crosswalk at 4th Ave South. Many (over 48%) supported improvements to the existing crosswalk on 4th Ave South. A nearly equal percentage of comments (~43%) were neutral about the crosswalk improvements.

Common themes included a desire for enhanced pedestrian safety measures at 4th Ave South (19 comments), desires for improved access and convenience (10 comments), and integration with nearby transit (10 comments).

"This would be fantastic. This crossing is scary and takes too long. Please improve this crossing as shown. And please work with SDOT to change the signal timing. The N-S green phase is too long for peds to wait, and they end up walking against the signal unsafely."

"Can you make a pathway between the building and a stairway or ramp through the wall next to the sidewalk? The real value of this crosswalk is a more direct route to the light rail station entrances."

"Currently, it is difficult to get across 4th Avenue to the light rail station or Uwajimaya. Any crosswalk improvements near King Street station will be great."

"I have reservations about maintaining a crosswalk on the street level, especially on a busy road with many lanes like 4th Ave South. Ideally, there would be a separate, covered, daylight (elevated or below ground) crosswalk to keep pedestrians safe. I'm imagining something like the bridges between the terminal and the parking garage at SeaTac airport."

South end platform extension to 4th Ave South at Seattle Boulevard

We received 43 comments about the proposed South end platform extension to 4th Ave South at Seattle Boulevard. Many (over 42%) were neutral and not opposed to the new street-level walkway over the tracks to 4th Ave South at Seattle Boulevard to provide another access point to the east. An equal percentage of comments approve (~28%) and disapprove (~28%) of the improvement.

Common themes included support for improved access to the station (13 comments), concerns about pedestrian safety (11 comments), and mixed feelings on the necessity of the proposed improvements (7 comments).

"With all the riders taking Sounder to the stadiums for so many events it will be a huge improvement to help riders exit and head south to the stadiums."

"Signalized crossing that gives more time since it's a wide street."

"This area is incredibly pedestrian unfriendly, so without additional improvements, including traffic calming, I'm not highly in favor of this."

"The bridge addition would not be utilized well due to limited amenities and relatively dangerous vehicular intersection."

Who we heard from

We asked respondents if they had taken the Sounder train to or from King Street Station within the last 12 months. Most people we heard from are regular Sounder riders: 69% (108 respondents) have taken the S Line, and 17% (28 respondents) have taken the N Line. Of this rider group, more than 68% (83 respondents) reported riding two or more days a week.

Less than 30 survey respondents said they either do not ride Sounder or used to before their commuting patterns changed due to the pandemic. Among this non-rider group, most (56%) selected that they work near the station as their interest in the project, while 36% live near the station and 36% selected “other” (respondents could select more than one response). Comments in the “other” category included taking Amtrak, using the Weller Street Bridge for local travel, and considering riding the Sounder in the future.

Respondents were also invited to provide optional demographic information, and over 90 people shared details about themselves. The largest percentage of respondents were aged 35 – 49 (34%) followed by 25 – 34 (27%), and many respondents were employed full time (87%), which aligns with a high percentage of respondents taking Sounder to commute. Small percentages of respondents reported being students (8%), employed part-time (5%), retirees (4%), or self-employed (2%).

More than half of the respondents identified as male (64%). Most of the respondents identified as white (75%), with additional responses from individuals who identified as Asian or Asian American (18%), other (6%, usually commenting that they are multiracial), Black or African American (3%), choosing not to say (3%), and 2% or less identifying as American Indian or Alaskan Native, Middle Eastern or North African, and Native Hawaiian or other Pacific Islander. Approximately 14% of respondents reported having a disability that impacts the way they use public transportation.

The largest household income group reported was between \$150,000 and \$199,999 (20%), followed by more than \$200,000 (19%). Incomes under \$150,000 accounted for about 51% of respondents, with less than 10% at incomes under \$50,000. The top languages spoken at home were English (97%), Mandarin (6%), Spanish (3%), and Vietnamese (2%), with respondents allowed to select multiple options.

Additionally, we wanted to increase engagement from the surrounding neighborhoods of Chinatown-International District and Pioneer Square. To broaden our outreach during the survey period, we displayed in-language posters in the surrounding neighborhoods and partnered with projects that build relationships within the local community (see Engagement Activities).

Next steps

Since we are still early in our design work, the proposed pedestrian connections and improvements to the King Street Station platform area are subject to change as we make progress towards final design and construction.

- We'll continue design and engineering work and collaborate with partnering jurisdictions and agencies, such as the City of Seattle, BNSF, Amtrak, local historic boards, and design commissions, to refine our plans.

King Street Station Platform Area Improvements

- We'll review feedback we get from Sounder riders, project neighbors, and community groups.
- We'll prepare environmental analyses reviewing the project's potential effects on transportation, noise and vibration, cultural and historic resources, views, and more. We expect to publish a State Environmental Policy Act checklist with the findings of our environmental review in 2025.

The Sound Transit Board of Directors values public input when deciding the project's next steps, including what elements get constructed. We expect to share more information about our work and how the project is advancing in 2025 and 2026.

To stay informed:

- Visit the project website to learn more or sign up for updates by email: [King Street Station Platform Area Improvements](#).
- For additional information, you may contact Valerie Cortes, Senior Community Engagement Specialist: Valerie.cortes@soundtransit.org or 253-303-3766.

Frequently Asked Questions

How does this project integrate with Ballard Link Extension project that includes a second light rail station in the Chinatown-International District?

The Ballard Link Extension project is currently studying multiple locations for the second station that will serve the [Chinatown-International District](#). The pedestrian connections being studied under the King Street Station Platform Area Improvements project will provide more options to exit King Street Station and make connections to the current and future light rail stations. We are coordinating closely with the Ballard Link Extension team as planning moves forward for both projects.

Can you build a lid / park over the Sounder station or a new bridge over the tracks to connect to the stadiums?

No. To design and build a lid / park or a bridge to the stadiums would be too costly and could potentially interfere with the active rail freight corridor and Amtrak passenger rail service.

Can you build a tunnel from King Street Station to the existing International District / Chinatown station?

A tunnel under 4th Ave South is not feasible, as it would require widening the platform, which would require removing one train track impacting Sounder, Amtrak, and freight operations in the area. The potential pedestrian connections we're studying at street-level will help passengers make their way between the stations.

How will the King Street Station Platform Area Improvements project enhance access to surrounding transit connections and local neighborhoods?

The potential pedestrian connections may enhance the existing Weller Street crosswalk on 4th Ave South and create new street-level walkways to King Street Station Plaza, 2nd Ave Extension, and to 4th Ave South near Union Station and at Seattle Boulevard South. This project is a part of a larger plan to improve accessibility through the Chinatown-International District and Pioneer Square neighborhoods in coordination with the Sound Transit Ballard Link Extension team and with the South Downtown Hub planning effort.

What is being done to address the elevator maintenance and redundancy issue at King Street Station?

We recognize that the lack of redundant elevators is a big challenge for mobility-impaired passengers, and we hope to increase redundancy in the future through this project. In the meantime, Sound Transit has an elevator maintenance program to address these needs. In the event the elevator is out of service at the King Street Station platform, security personnel will escort passengers across the tracks toward the Amtrak station.

Can't you make the platform wider?

Widening the platform would require removing one or more tracks, which would significantly impact Sounder, Amtrak, and freight operations in the corridor.

Will there be seating on the new concourse?

In our next phase of study, we will determine if there is space to add benches or other seating to the concourse.

Will you consider adding a coffee shop or convenience store?

As a transit agency, Sound Transit is focused on providing transit services at our facilities. We encourage our customers to support neighborhood businesses as they travel to and from our stations.

Can you add more ORCA card readers?

In our next phase of study, we will determine if there is space to add ORCA card readers on the new concourse level.

For more frequently asked questions, please visit the [online open house archive](#).

General Sounder questions

Why doesn't Sounder run during evenings or weekends?

Sounder runs primarily on tracks owned by the BNSF Railway. They use their tracks heavily during evenings and weekends for freight movements and maintenance. We do provide special event trains for select events, like some Seahawks, Sounders FC, and Mariners games. See the schedule [here](#).

How does Sound Transit ensure safety and security at stations?

Sound Transit implements industry best practices to ensure our facilities are safe. Our measures include ample lighting, security cameras monitoring by security staff, roaming patrols by Sound Transit security staff, and encouraging customers to report any suspicious activity (call or text Security 24/7 at 206-398-5268). In case of a medical emergency, please call 911.

How have ridership levels changed with the pandemic? Are these improvements necessary?

In early 2020, Sounder South trains were often full during peak periods, but ridership declined sharply when the pandemic hit, and many people shifted to remote work. Sounder ridership is now rebounding, and we expect it to continue to grow as our region recovers from the pandemic and the ridership population keeps growing.

What happened to the signs on the platform showing departure times?

New platform signs showing departure times are expected to be installed and operational by 2025.

King Street Station Platform Area Improvements

Appendix A: Online open house

The snapshot below shows the online open house that was live from July 12 – Sept. 30, 2024. A [full capture of the site](#) is available on the project website. The site was available in [English](#), [Spanish](#), [Vietnamese](#), [Simplified Chinese](#) and [Traditional Chinese](#).



Welcome Pedestrian connections Survey Next steps

Welcome

What's happening now?

The King Street Station Platform Area Improvements project is in the planning and early design phase. Since 2022, we've refined the project's architectural, engineering, environmental, and design elements. Read on to learn more about the proposed improvements, like potential pedestrian connections, and share your feedback with us.

Overview

As a primary destination for Sounder riders from the north (N Line, four daily roundtrips) and the south (S Line, 13 daily roundtrips), King Street Station in downtown Seattle is an important hub for thousands of daily passengers each weekday and during special events. The King Street Station Platform Area Improvements project aims to make the station more accessible and ready to serve more Sounder riders in the years ahead.

The potential improvements to King Street Station include:

- More stairs and elevators** – This update will make it easier to get to and from the platform, help reduce crowding, and improve accessibility and overall rider experience.
 - Add one elevator and two staircases north of the Weller Street Bridge.
 - Add two elevators and a staircase at a new south entrance/exit with a street-level walkway over the tracks connecting to 4th Ave South.
- Concourse** — A new upper level of the station will be constructed directly above the Sounder platform to provide access to the new staircases and elevators.
- Longer platform** — Extending the Sounder platform to the south will allow the addition of another entrance/exit to the platform and serve longer trains and more riders in the future.
- Pedestrian connections** – We're studying four areas for improved pedestrian access to and from the station (learn more in the next section).



King Street Station is located next to 4th Ave South in downtown Seattle below street-level.

Stay engaged

Sign up to get email updates on this project.

Subscribe now

Come speak with us!

Find us at the open house portion of South Downtown Hub Workshop #2:

Union Station
401 South Jackson Street
July 17, 2024, 4 - 4:30 p.m. (full event 4 - 7 p.m.)

More information

add to calendar

Swing by when we table at the station:

King Street Station
4th Ave South and Weller Street Bridge
Aug. 7, 2024, 2:30 - 6:30 p.m.

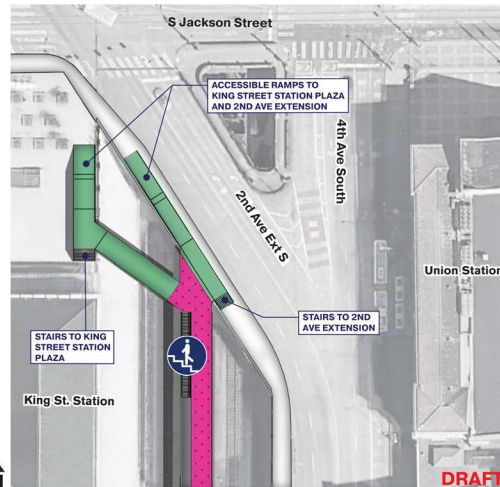
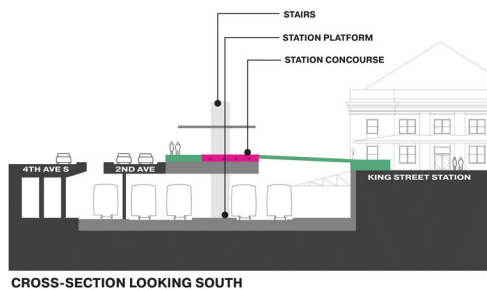
add to calendar

Appendix B: Early designs for pedestrian connections

Concourse to King Street Station Plaza and 2nd Ave Extension

The street-level walkways at this pedestrian connection would provide ramp and stair access to King Street Station Plaza and the 2nd Ave Extension bridge.

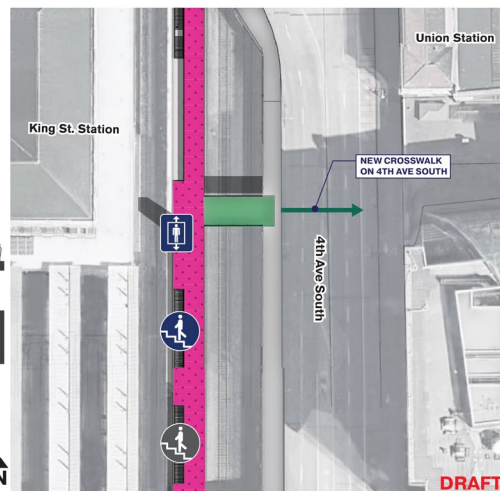
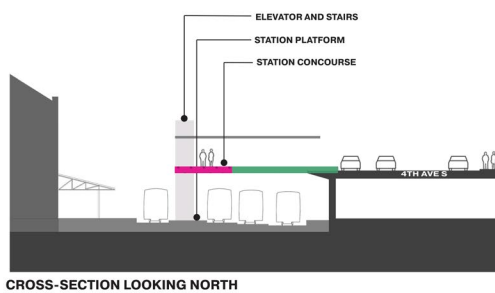
CONCOURSE TO KING STREET STATION PLAZA AND 2ND AVE EXTENSION



Concourse to 4th Ave South near Union Station

This street-level walkway from the concourse above the station would connect to a new crosswalk on 4th Ave South.

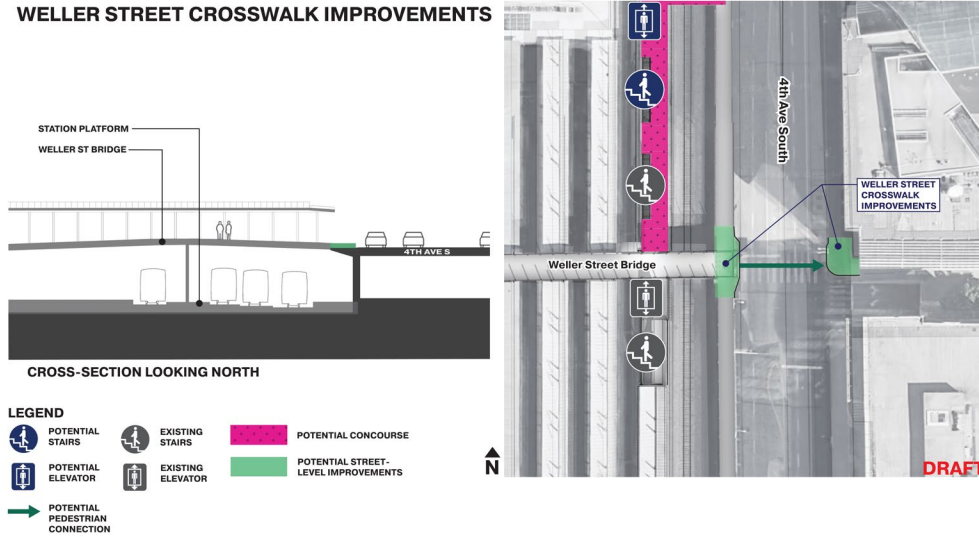
CONCOURSE TO 4TH AVENUE SOUTH



King Street Station Platform Area Improvements

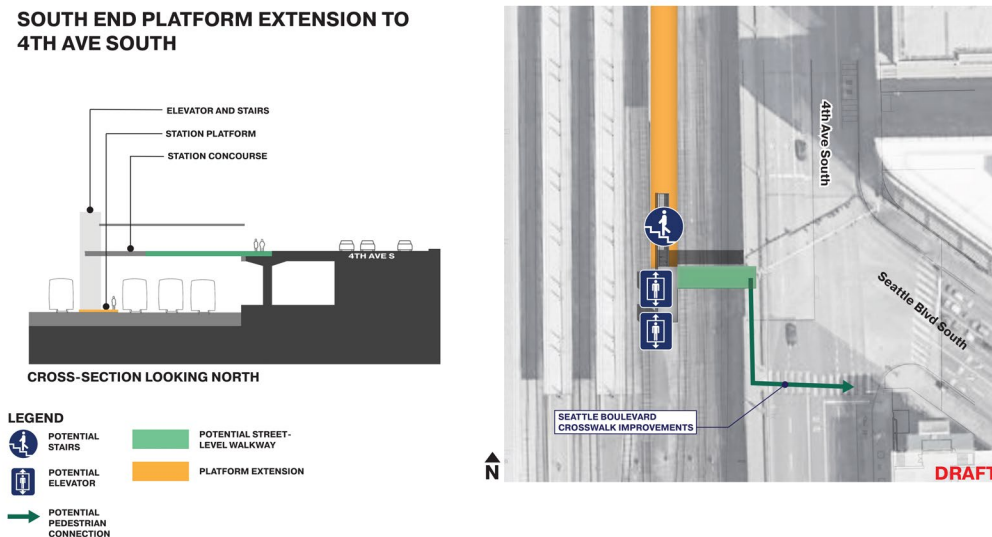
Weller Street crosswalk improvements

This pedestrian connection would include improvements to the existing crosswalk on 4th Ave South at the Weller Street Bridge.



South end platform extension to 4th Ave South

New street-level walkway over the tracks to 4th Ave South at Seattle Boulevard South to provide another access point to the east. The new entrance/exit would connect to an existing crosswalk on 4th Ave South.



Appendix C: Local events

Events and dates we shared flyers and display materials with the Ballard Link Extension and South Downtown Hub teams during the engagement period.

Fairs and festivals - Ballard Link Extension

Event	Date
Celebrate Little Saigon	8/10/24
Chinatown-International District Block Party	8/17/24
C-ID Night Market	9/21/24

Community briefings - South Downtown Hub

Focus group	Date
Puget Sound Sage	8/19/24
Publix Apartments residents	8/28/24
Senior residents of the Chinatown-International District	9/20/24
Senior residents of the Chinatown-International District	9/25/24

King Street Station Platform Area Improvements

Appendix D: Notification materials

Front and back of the project flyer handed out during King Street Station Platform Area Improvements tabling on Aug. 7.

Posters targeting communities in the Chinatown-International District and Pioneer Square.

King Street Station Platform Area Improvements

Pedestrian connections to King Street Station and beyond

Sound Transit is planning improvements to make King Street Station more accessible and ready to serve more riders in the years ahead. Learn more about the proposed improvements, like new potential pedestrian connections to the station, and share your feedback.

Tell us what you think by Sept. 30
soundtransit.org/kss-plan

SOUNDTRANSIT / Powering progress

King Street车站 月台区域改善
 通达King Street车站及周边区域的人行道

Sound Transit正计划改善King Street车站，以提高便利性并准备在未来数年为更多乘客提供服务。进一步了解拟议的改善措施（例如通达车站的全新潜在人行道）并与我们分享您的反馈。

请于9月30日之前告诉我们您的想法
soundtransit.org/kss-plan-zh

King Street車站 月台區域改善
 通達King Street車站及周邊區域的人行道

Sound Transit正在規劃改善King Street車站，以提高便利性並準備在未來幾年為更多乘客提供服務。進一步了解擬議的改善措施（例如通達車站的全新潛在人行道）並與我們分享您的回饋。

請於9月30日之前告訴我們您的想法
soundtransit.org/kss-plan-zhtr

Ga King Street | Cải Tạo Khu Vực Sân Ga
 Công trình kết nối dành cho người đi bộ tới Trạm King Street và xa hơn

Sound Transit đang quy hoạch các hạng mục cải tạo để giúp Trạm King Street dễ tiếp cận hơn và sẵn sàng phục vụ nhiều hành khách hơn trong những năm tới. Tìm hiểu thêm về những hạng mục cải tạo được đề xuất như các công trình kết nối dành cho người đi bộ tới trạm và chia sẻ ý kiến phản hồi của quý vị.

Hãy cho chúng tôi biết ý kiến của quý vị chậm nhất vào ngày 30 tháng 9
soundtransit.org/kss-plan-vi

Estación King Street Mejoras en el área de la plataforma
 Conexiones peatonales a la estación King Street y más allá

Sound Transit planea hacer mejoras para que la estación King Street sea más accesible y esté preparada para dar servicio a más usuarios en los próximos años. Obtenga más información sobre las propuestas de mejoras, como las posibles nuevas conexiones peatonales con la estación, y compártanos su opinión.

Díganos qué opina antes del 30 de septiembre
soundtransit.org/kss-plan-es

SOUNDTRANSIT

King Street Station Platform Area Improvements
 Pedestrian connections to King Street Station and beyond

Sound Transit is planning improvements to make King Street Station more accessible and ready to serve more riders in the years ahead. Learn more about the proposed improvements, like new potential pedestrian connections to the station, and share your feedback.

Tell us what you think by September 30
soundtransit.org/kss-plan

King Street车站 | 月台区域改善
 通达King Street车站及周边区域的人行道

Sound Transit正计划改善King Street车站，以提高便利性并准备在未来数年为更多乘客提供服务。进一步了解拟议的改善措施（例如通达车站的全新潜在人行道）并与我们分享您的反馈。

请于9月30日之前告诉我们您的想法
soundtransit.org/kss-plan-zh

King Street車站 | 月台區域改善
 通達King Street車站及周邊區域的人行道

Sound Transit正在規劃改善King Street車站，以提高便利性並準備在未來幾年為更多乘客提供服務。進一步了解擬議的改善措施（例如通達車站的全新潛在人行道）並與我們分享您的回饋。

請於9月30日之前告訴我們您的想法
soundtransit.org/kss-plan-zhtr

Ga King Street | Cải Tạo Khu Vực Sân Ga
 Công trình kết nối dành cho người đi bộ tới Trạm King Street và xa hơn

Sound Transit đang quy hoạch các hạng mục cải tạo để giúp Trạm King Street dễ tiếp cận hơn và sẵn sàng phục vụ nhiều hành khách hơn trong những năm tới. Tìm hiểu thêm về những hạng mục cải tạo được đề xuất như các công trình kết nối dành cho người đi bộ tới trạm và chia sẻ ý kiến phản hồi của quý vị.

Hãy cho chúng tôi biết ý kiến của quý vị chậm nhất vào ngày 30 tháng 9
soundtransit.org/kss-plan-vi

King Street Station | Mejoras en el área de la plataforma
 Conexiones peatonales a la estación King Street y más allá

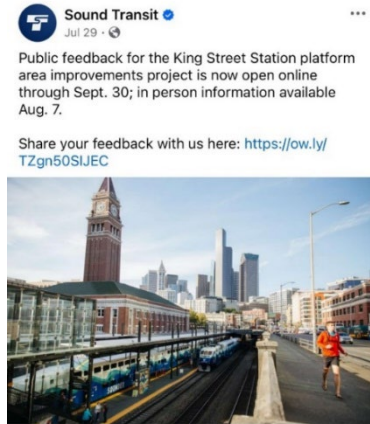
Sound Transit planea hacer mejoras para que la estación King Street sea más accesible y esté preparada para dar servicio a más usuarios en los próximos años. Obtenga más información sobre las propuestas de mejora, como las posibles nuevas conexiones peatonales con la estación, y compártanos su opinión.

Díganos qué opina antes del 30 de septiembre
soundtransit.org/kss-plan-es

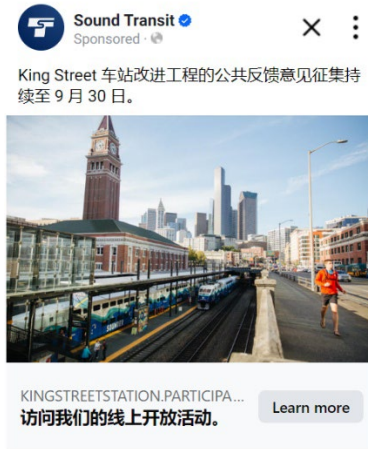
SOUNDTRANSIT / Powering progress

King Street Station Platform Area Improvements

Social media promotions shared via Twitter/X and Facebook.



Targeted in-language ads shared via Facebook.



King Street Station Platform Area Improvements

Appendix E: Poster locations

The King Street Station Platform Area Improvements team enlisted PosterGiant to display posters in the neighborhoods surrounding the station from Sept. 10 – Sept. 30. A total of 600 posters were placed at 300 locations, as shown in the map below.

