

# *Tacoma Dome Link Extension*

## *Draft EIS*

*Online public meeting & hearing*

*Audio en español*

*한국어 오디오*

*Русское аудио*

*Âm thanh bằng tiếng Việt*

*January 21, 2025*



Raise Hand



Q&A



Closed Caption



Interpretation

A photograph of a SoundTransit train on a track. The train is white with blue accents and is moving towards the viewer. The track is elevated and has a sound barrier on the right side. The background shows trees and a clear sky.

***Welcome***  
***Bienvenido***

***환영합니다***

***Добро пожаловать***

***Chào mừng***



For other interpretive support call  
1-800-201-4900, TTY Relay 711.






You are viewing Chris Johnstone's screen

View Options ▾


View




Audio Settings ^

 Raise Hand

 Q&A

 Closed Caption

 Interpretation

Leave




You are viewing Chris Johnstone's screen

View Options ▾

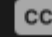
View




Audio Settings ^

 Raise Hand

 Q&A

 Closed Caption

 Interpretation

Leave

Question and Answer

**Welcome to Q&A**

Questions you ask will show up here. Only host and panelists will be able to see all questions.

Type your question here...



# Agenda

- Tacoma Dome Link Extension project background
- TDLE Draft EIS
  - Federal Way Segment
  - South Federal Way Segment
  - Fife Segment
  - Tacoma Segment
- Question and answer session
- Draft EIS public comment period
- Public hearing

***Tacoma Dome Link Extension  
project background***



# Tacoma Dome Link Extension (TDLE)

- Forecasted Service: 2035
- Currently in Draft EIS phase
- ~10 miles, 4 stations
- Fife & South Federal Way stations include 500 parking stalls in 2038
- Puyallup River light rail bridge
- 10% design level

**Link light rail**

**Tacoma Dome Link Extension**

- Preferred Alternative
- Other Draft EIS alternatives
- Design options
- Segment boundaries\*

**Route profiles**

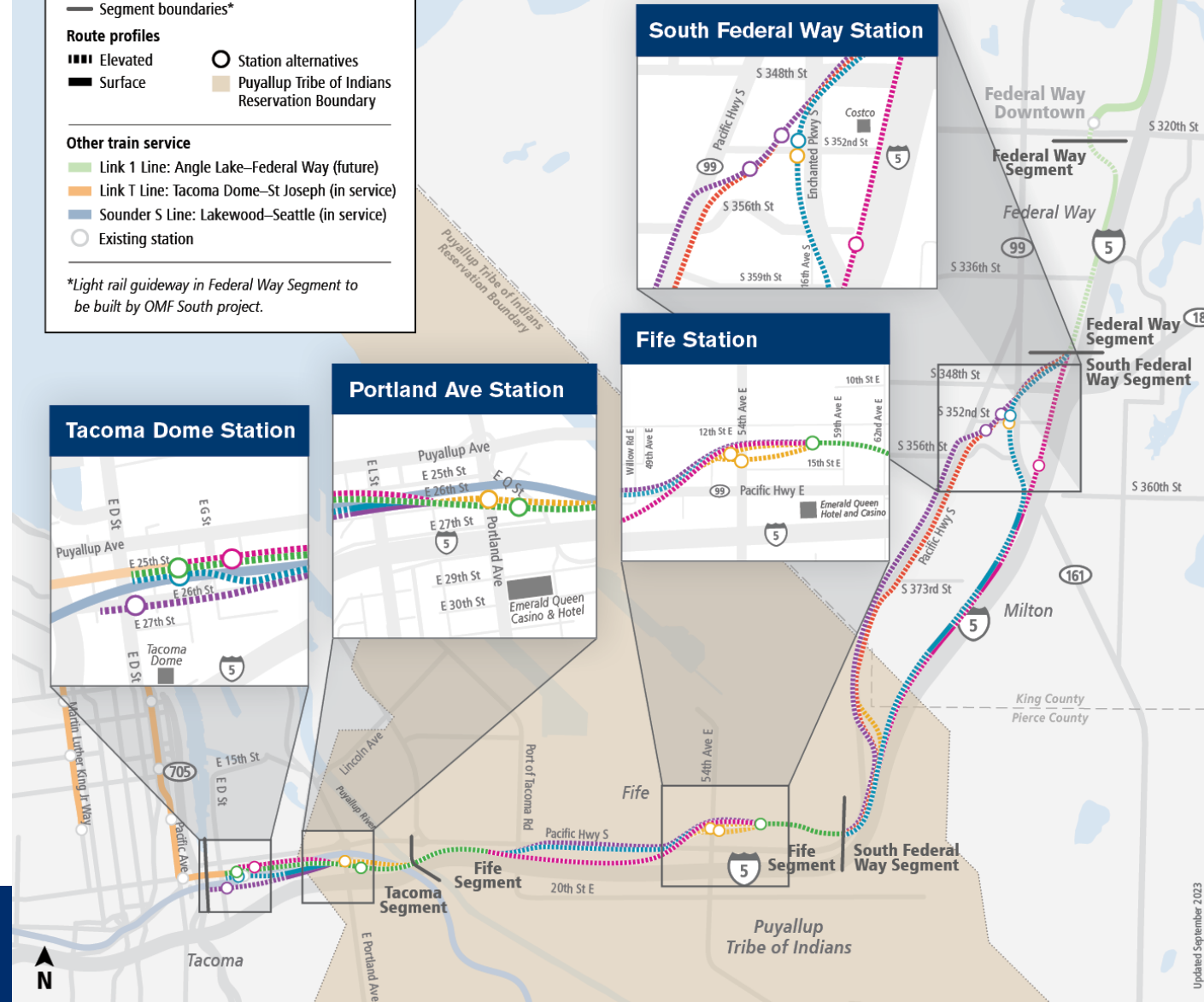
- Elevated
- Surface
- Station alternatives
- Puyallup Tribe of Indians Reservation Boundary

**Other train service**

- Link 1 Line: Angle Lake–Federal Way (future)
- Link T Line: Tacoma Dome–St Joseph (in service)
- Sounder S Line: Lakewood–Seattle (in service)
- Existing station

\*Light rail guideway in Federal Way Segment to be built by OMF South project.

# 1 Line



1

Line



# *Tacoma Dome Link Extension*

- ✓ Included in Sound Transit 3 (ST3) plan.
- ✓ Completes “light rail spine” connecting Pierce County & the region’s 2<sup>nd</sup> largest city (Tacoma) to light rail network.
- ✓ Connects the region to employment, services and educational opportunities in Pierce County and vice versa.
- ✓ First light rail line to serve a Tribal Reservation in the U.S.
- ✓ 24,000 to 36,000 daily transit riders.
- ✓ Tacoma Dome Station to Sea-Tac Airport in 35 minutes.
- ✓ Federal Way to Tacoma Dome Station in 20 minutes.
- ✓ Fife to Tacoma Dome Station in 6 minutes.

# Project timeline



- ✓ **2018:** Early scoping
- ✓ **2019:** Scoping
- ✓ **July 2019:** Board identified Preferred Alternative (PA) and other alternatives to study in Draft EIS
- ✓ **March 2023:** Board action adds additional route & station options to Draft EIS and removed PA designation in South Federal Way
- **December 13, 2024 – February 10, 2025:** 60-day Draft EIS comment period
- **Q2 2025:** Anticipated Board action to confirm or modify the PA



ST3  
APPROVED

2016



# PLANNING



DESIGN

## 2017–2019

### Alternatives development

- ✓ Spring 2018: Early scoping
- ✓ Spring 2019: Scoping
- ✓ June 2019: Board identified preferred alternatives and other Draft EIS alternatives



## 2019–2027

### Environmental review

#### Late 2024: Publish Draft EIS

Public comment period

Board confirms or modifies preferred alternatives (2025)

Publish Final EIS (2027)

Board selects project to be built (2027)

Federal Record of Decision (2027)

## PUBLIC INVOLVEMENT

# What is studied in an Environmental Impact Statement?

## **Transportation**

- Regional transportation
- Transit services
- Arterial and local street systems
- Parking
- Non-motorized facilities
- Navigation
- Freight

## **Natural environment**

- Air quality and greenhouse gas emissions
- Ecosystems
- Water resources
- Geology and soils

## **Built environment**

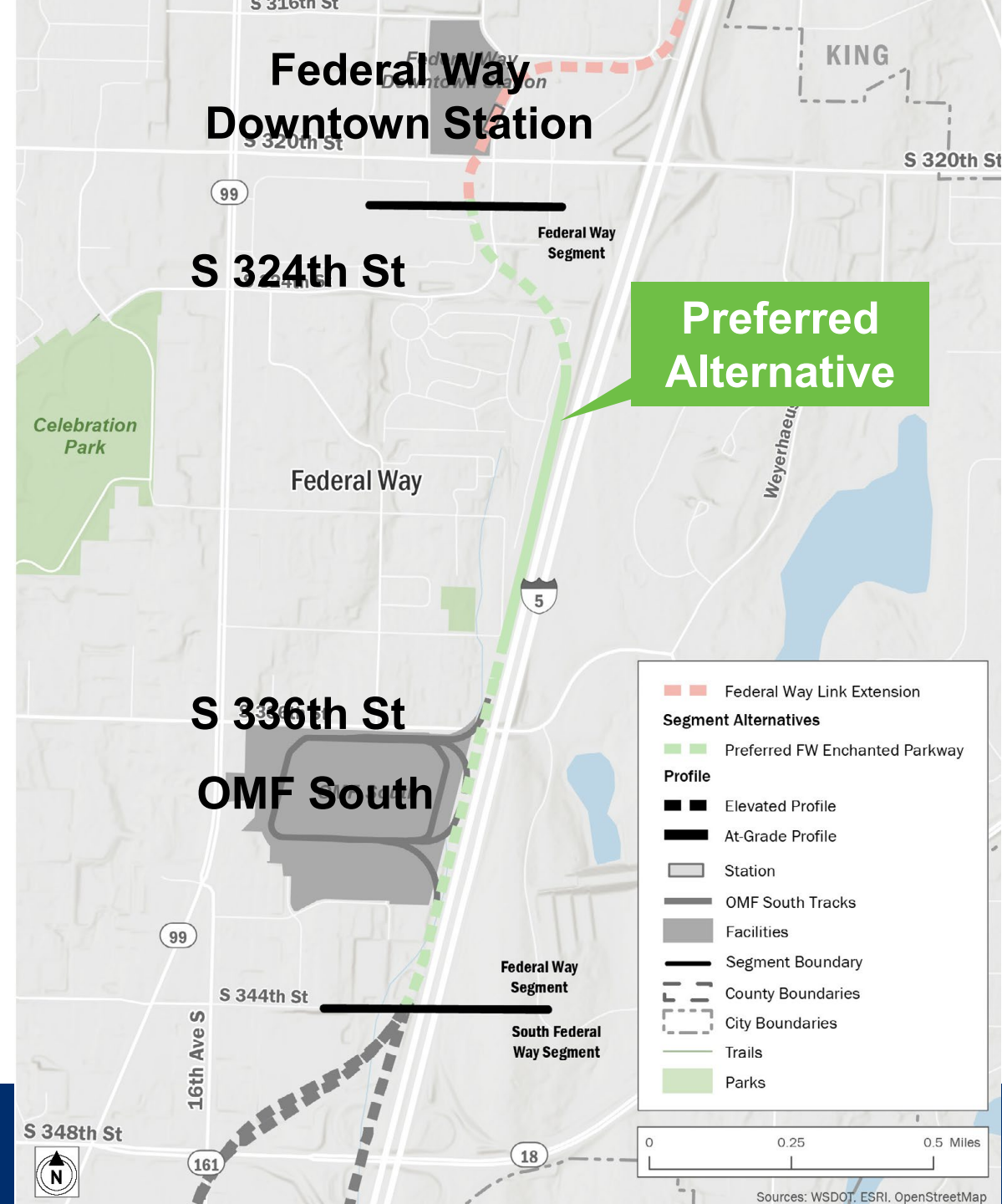
- Acquisitions, displacements and relocations
- Noise and vibration
- Economic effect
- Visual resources
- Parks and recreation
- Land use
- Energy
- Hazardous materials
- Public services
- Historic and archaeological resources
- Social resources, community facilities and neighborhoods
- Electromagnetic fields
- Utilities

# ***TDLE Draft EIS***

# ***Federal Way Segment***

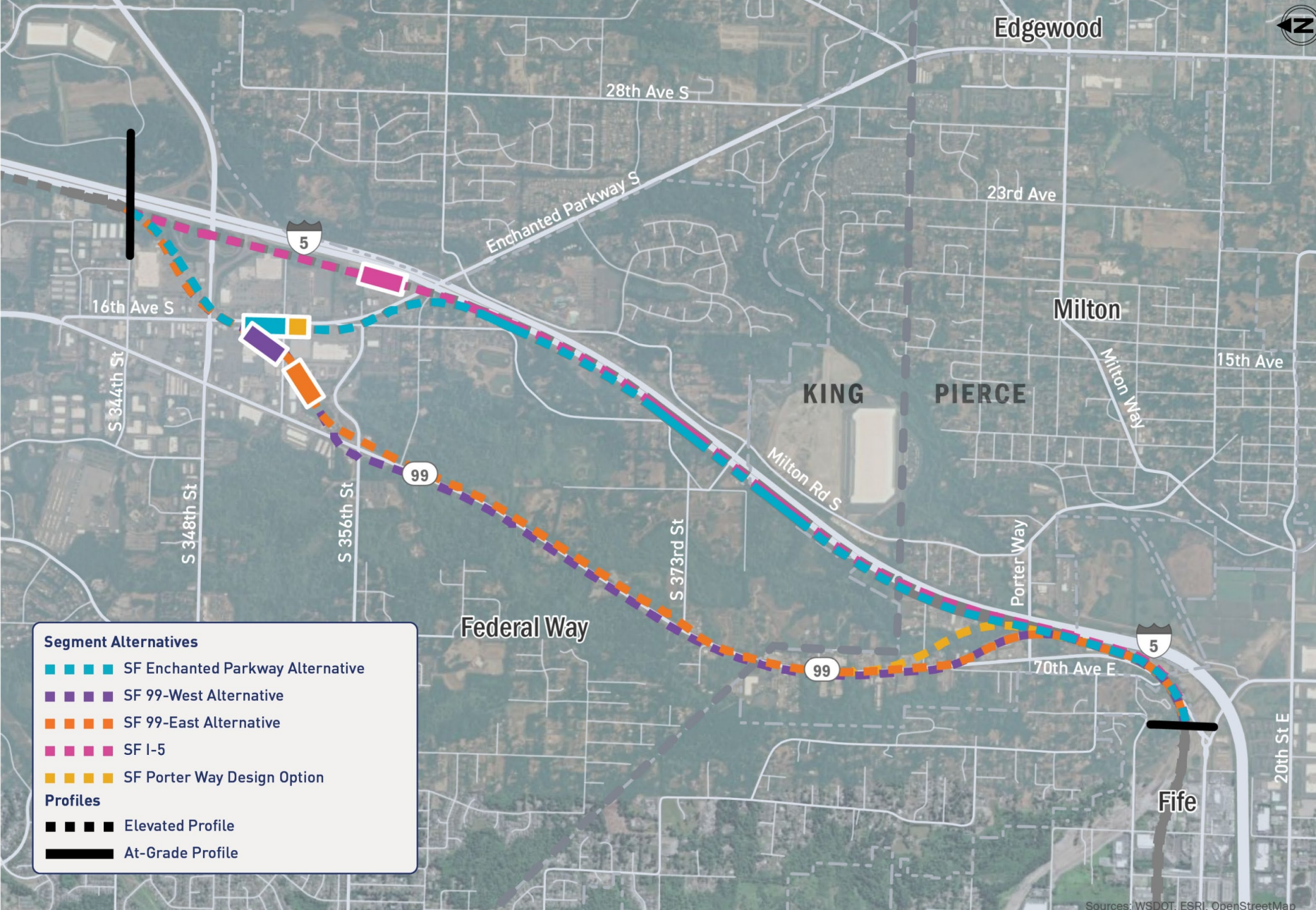
# Federal Way Segment

- June 2024: South 336th Street Alternative selected as the OMF South project to be built
- OMF South will construct ~1.4 mile Federal Way Segment
- Segment was included in OMF South Record Of Decision (ROD)
- Segment remains in TDLE Draft EIS



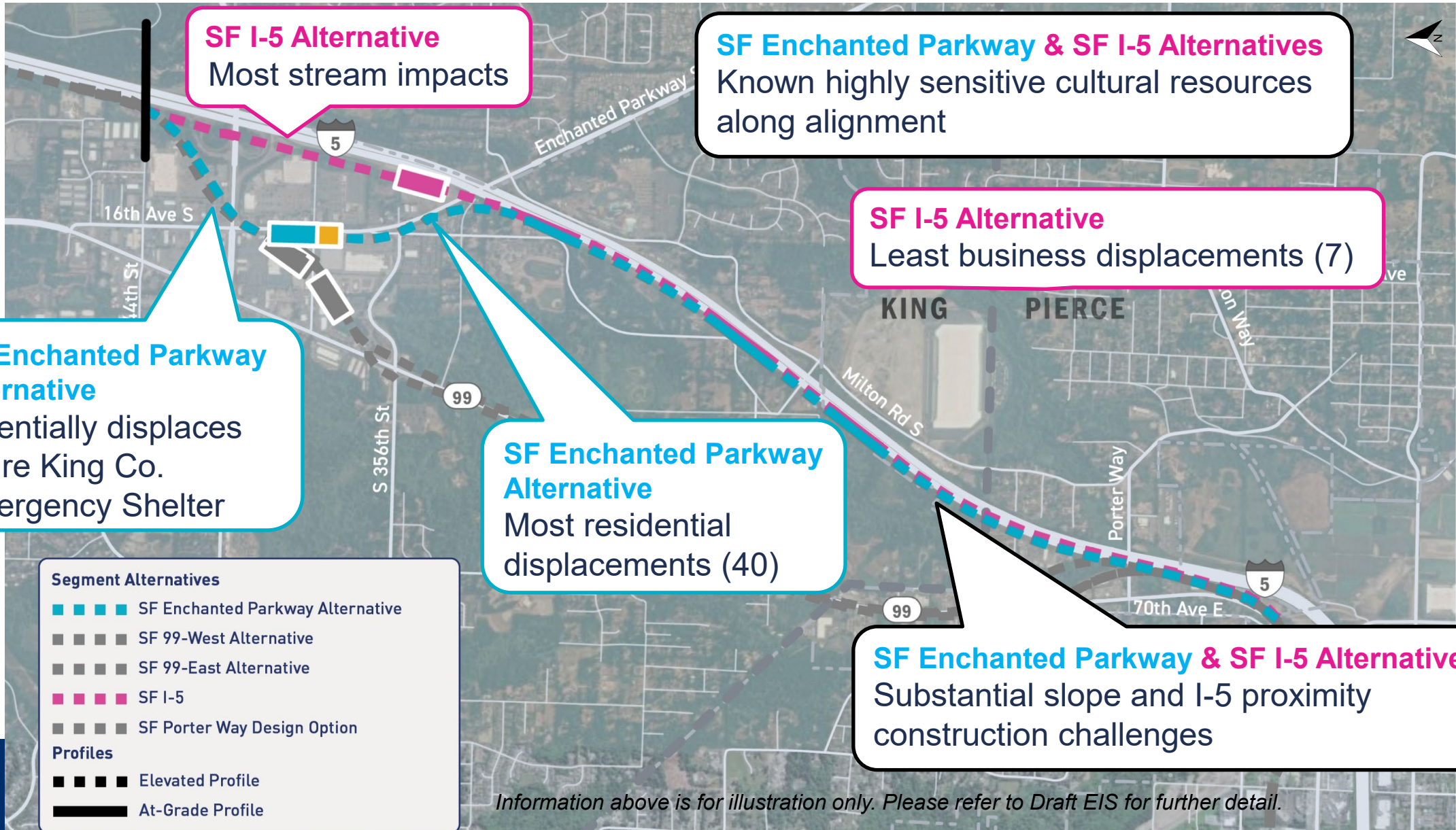


# South Federal Way Segment Overview



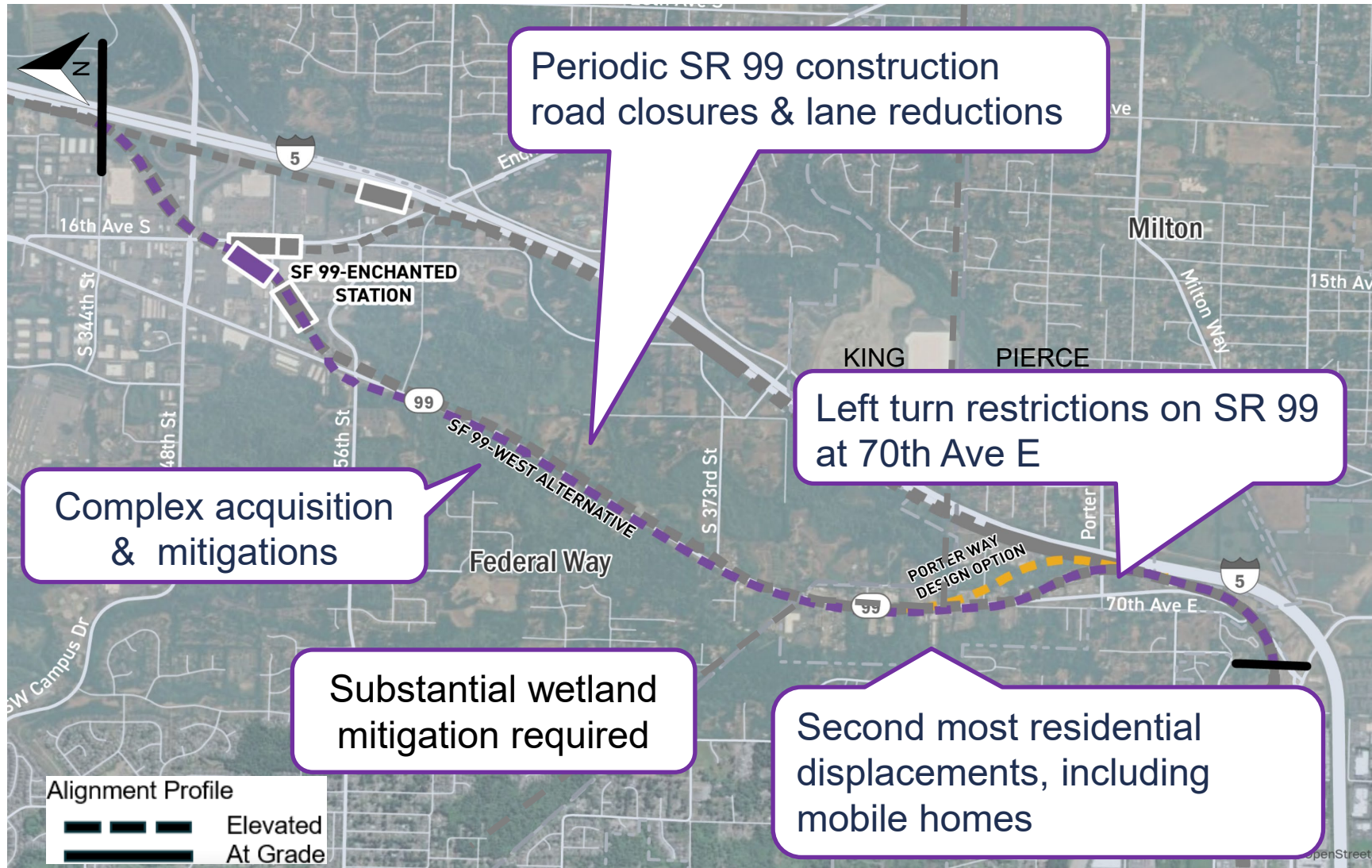
***South Federal Way alternative  
comparison***

# SF Enchanted Parkway & SF I-5 Alternative

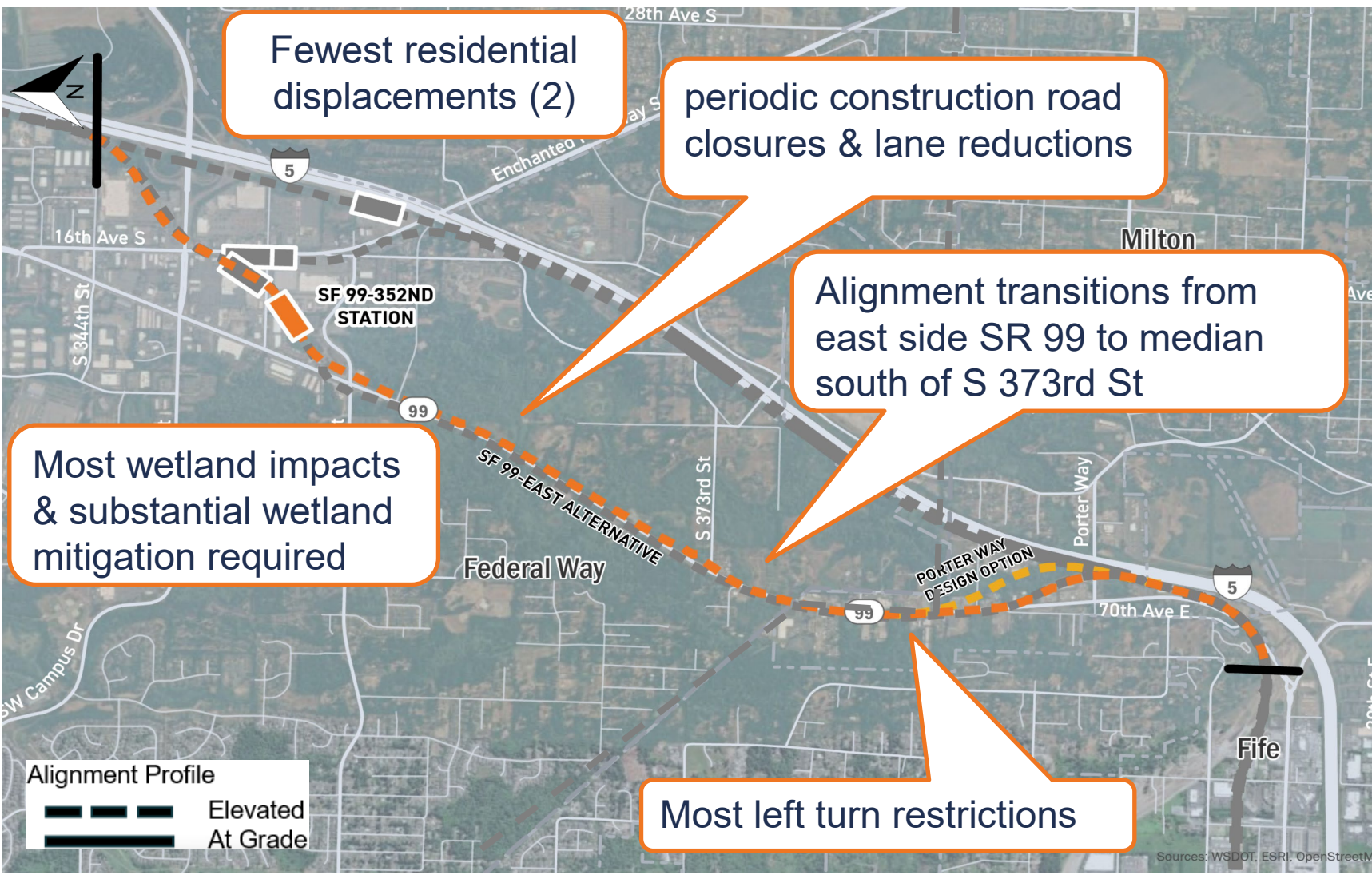


Information above is for illustration only. Please refer to Draft EIS for further detail.

# SF 99-West Alternative / (Porter Way Design Option)



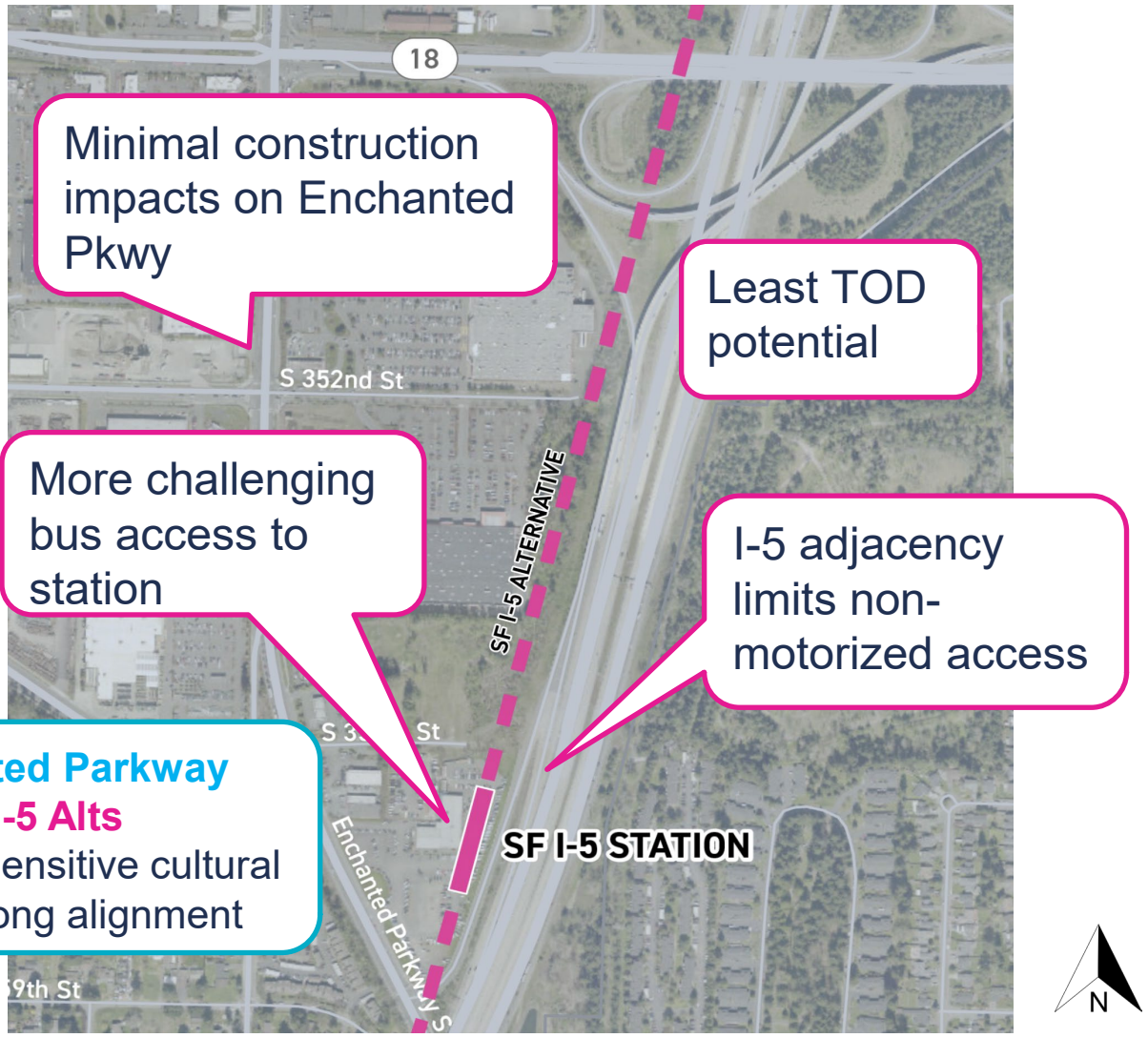
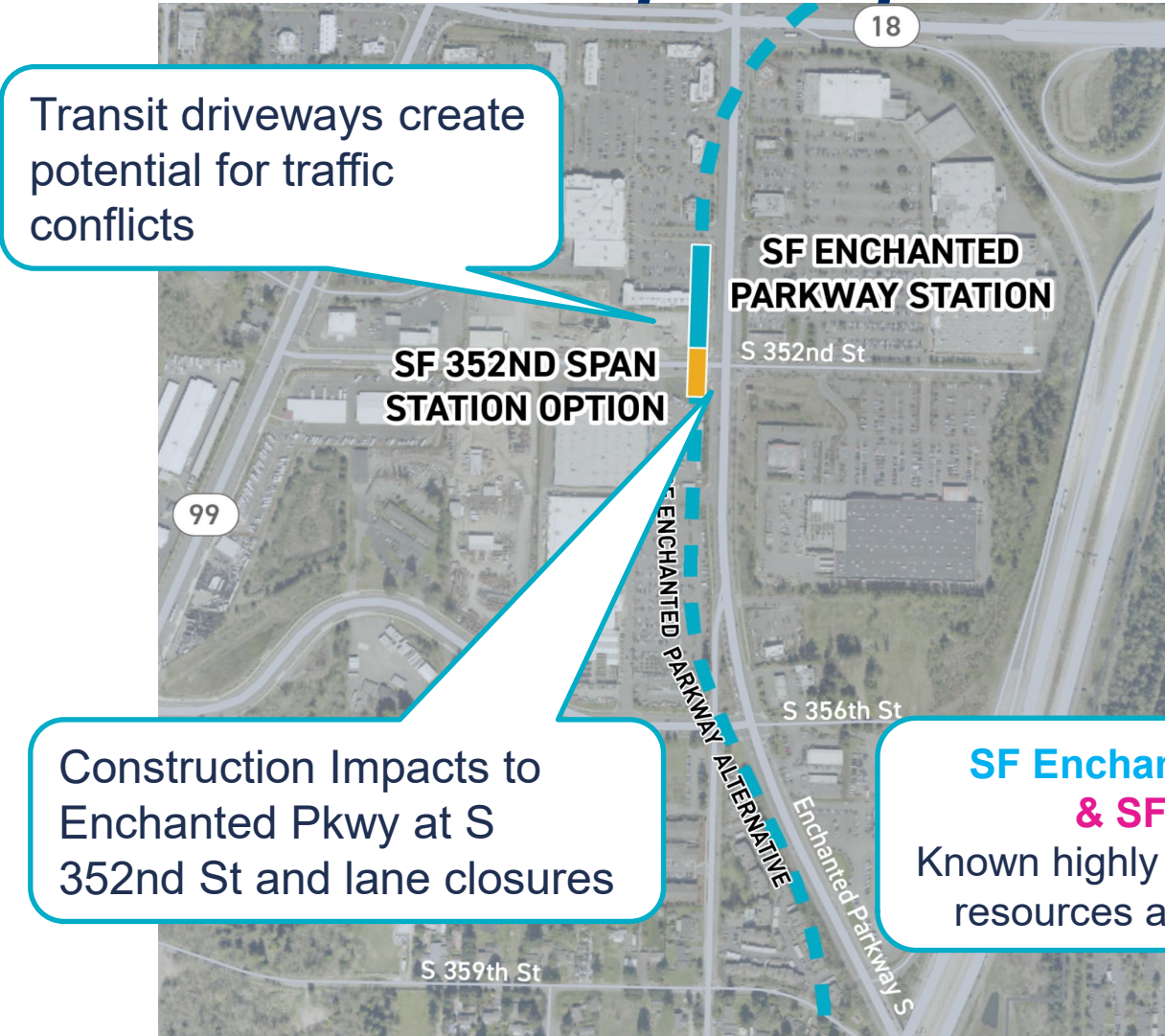
# SF 99-East Alternative / (Porter Way Design Option)



***South Federal Way station  
comparison***

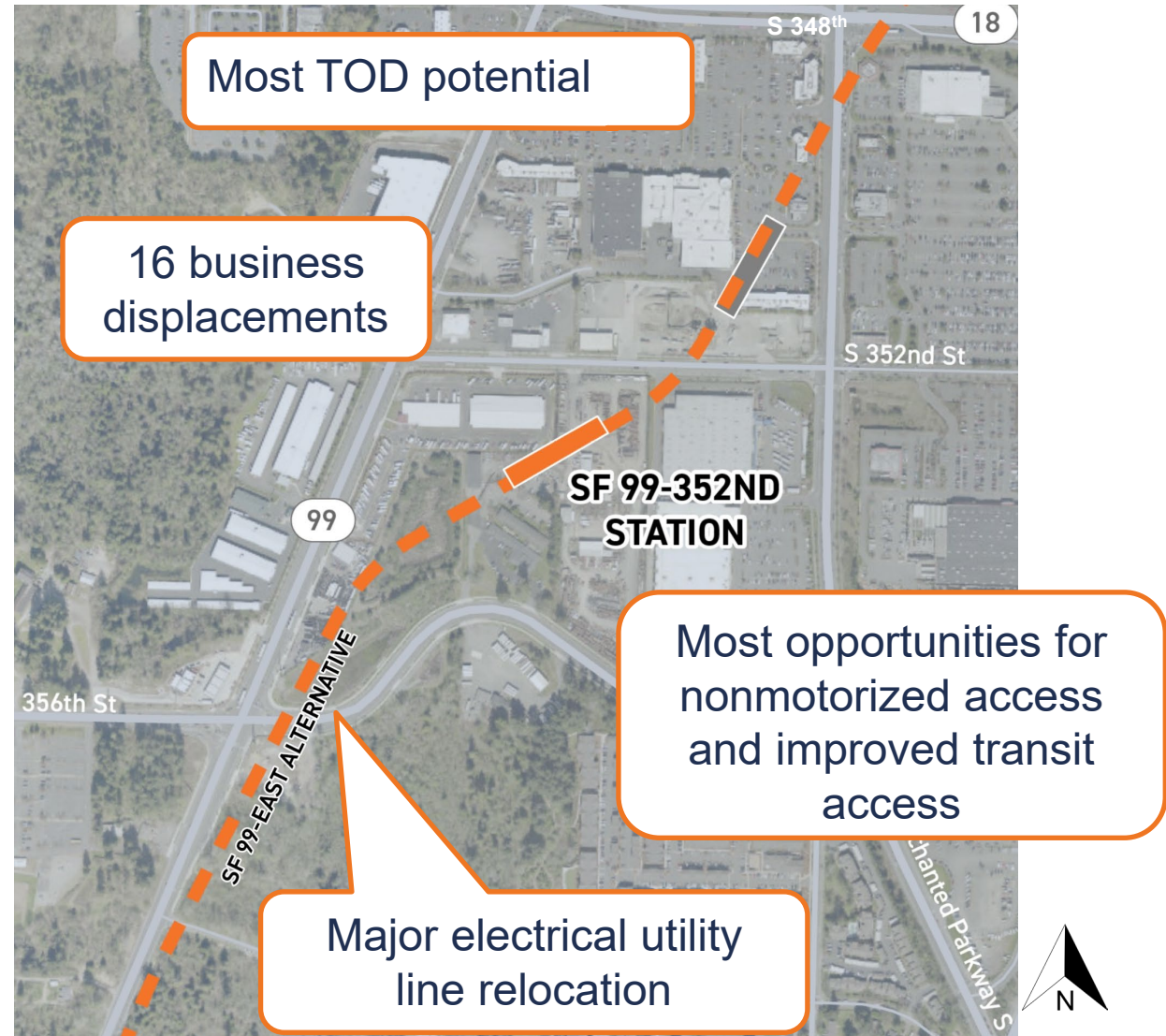
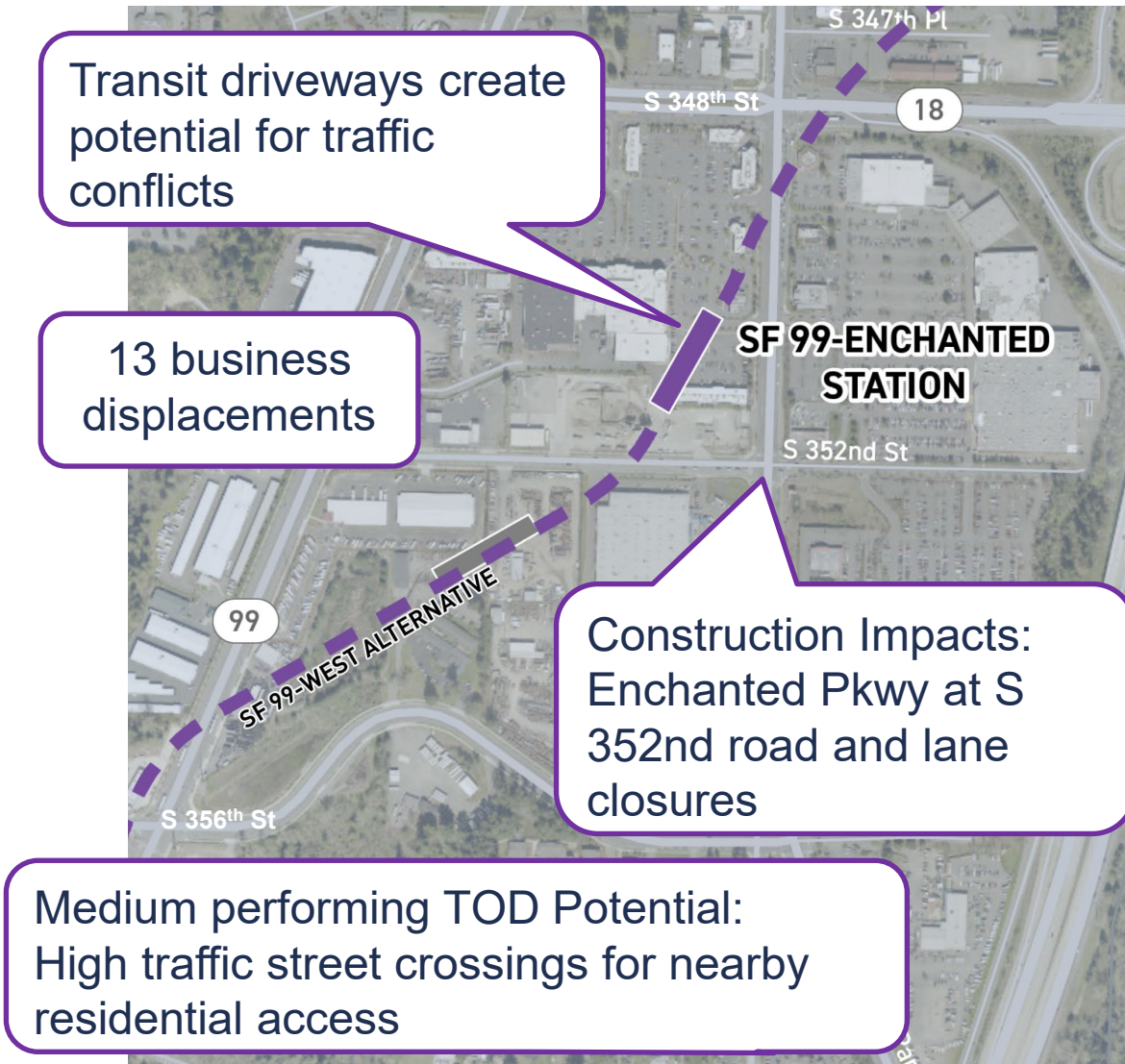
# SF Enchanted Pkwy Station & SF 352nd Span Option

# SF I-5 Station



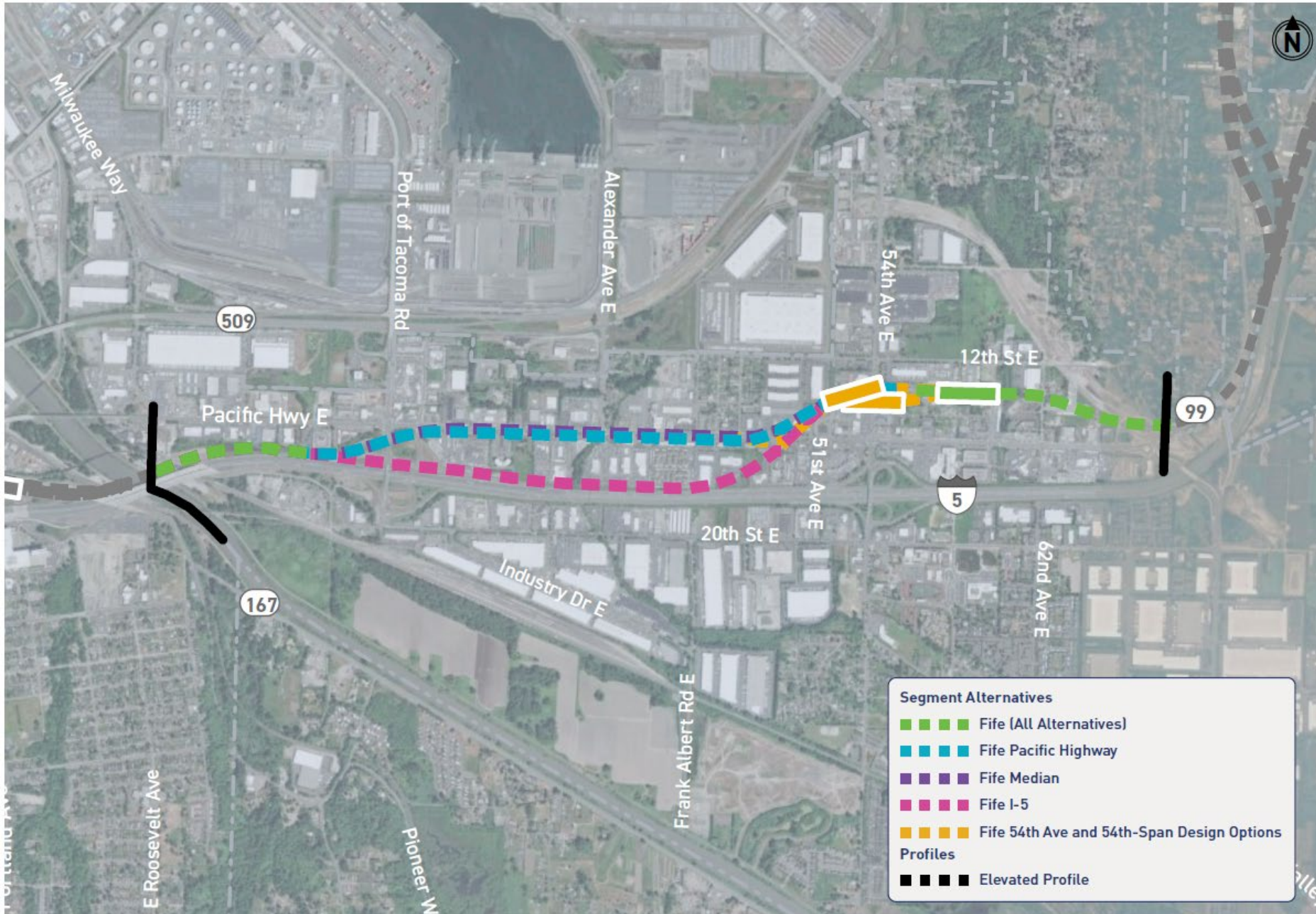
# SF 99-Enchanted Station

# SF 99-352nd Station



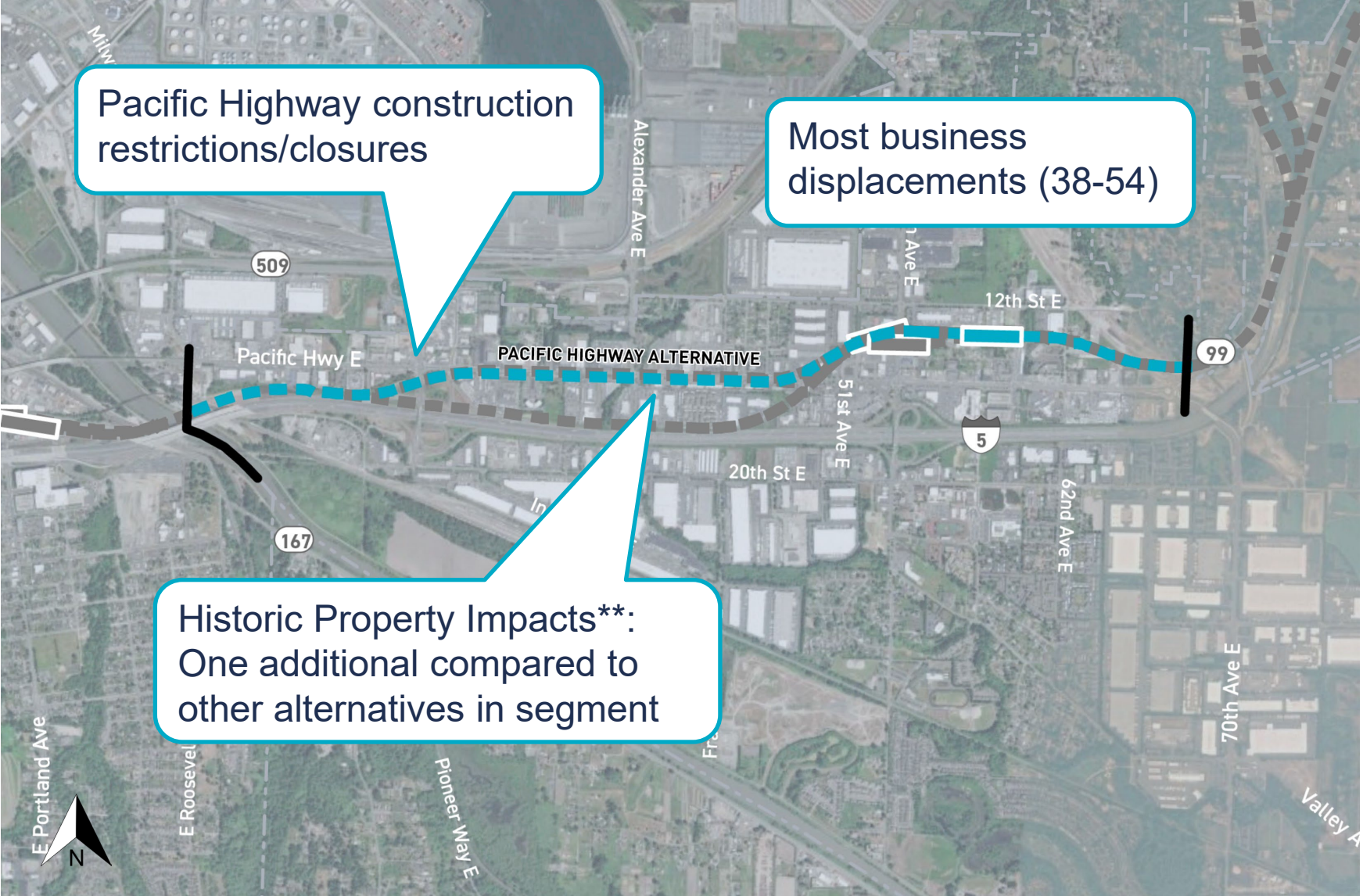


# Fife Segment



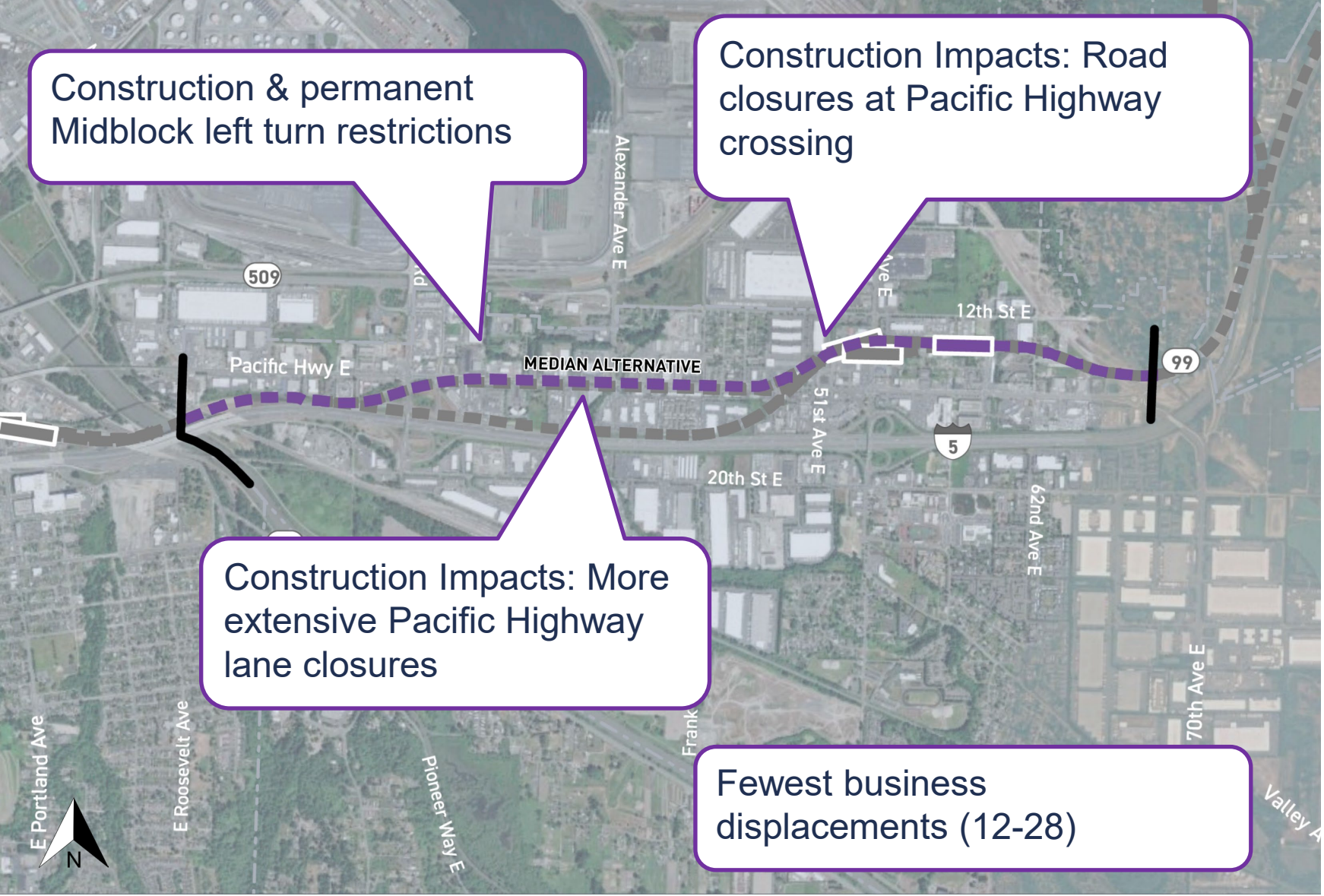
# ***Fife Alternative Comparison***

# Fife Pacific Highway Alternative



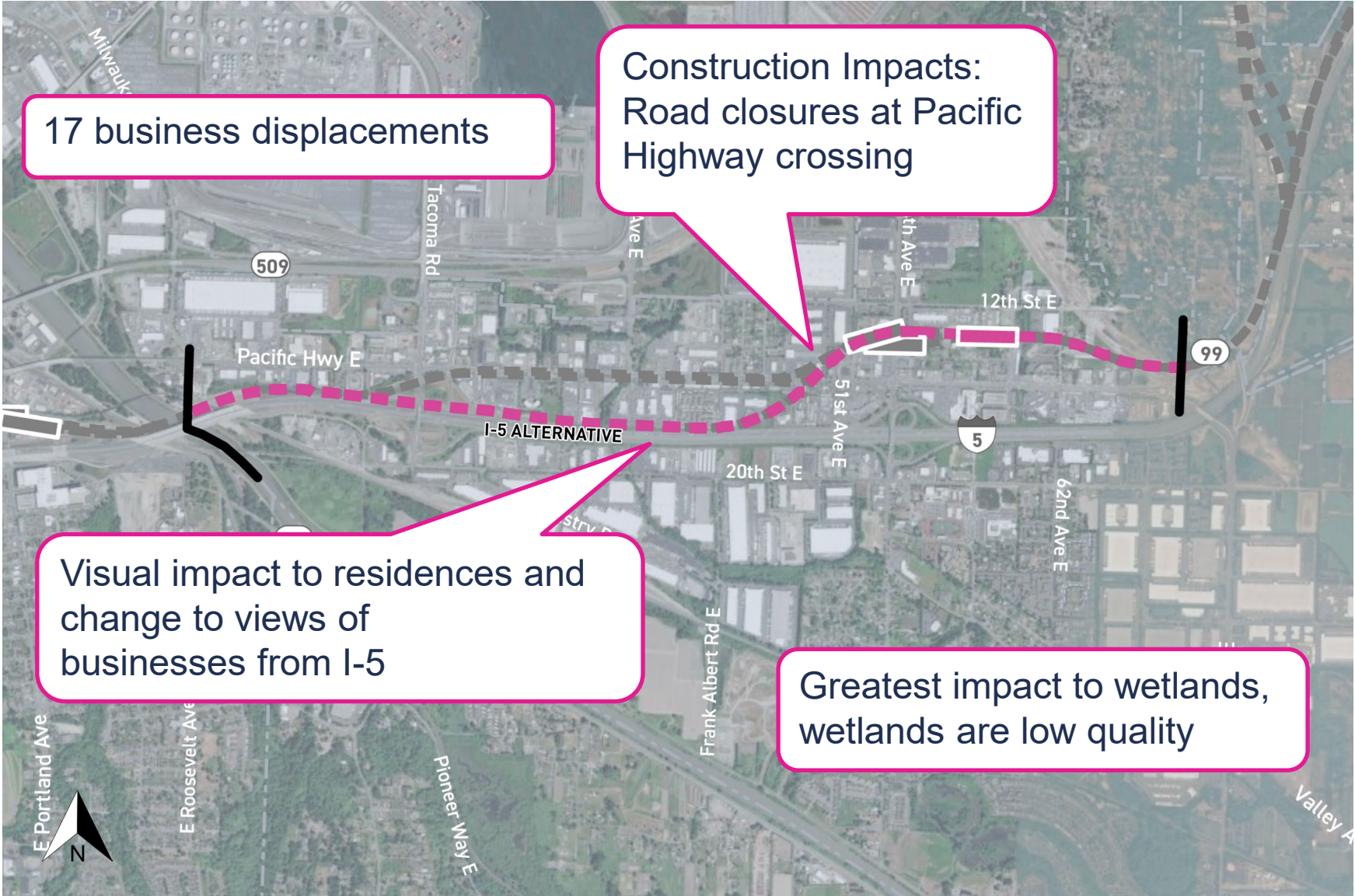
\*\*Historic properties include buildings, sites, or objects that are eligible for or listed on the National Register of Historic Places.

# Fife Median Alternative



28 Information for illustration only. Please refer to Draft EIS for further detail.

# Fife I-5 Alternative



17 business displacements

Construction Impacts:  
Road closures at Pacific Highway crossing

Visual impact to residences and change to views of businesses from I-5

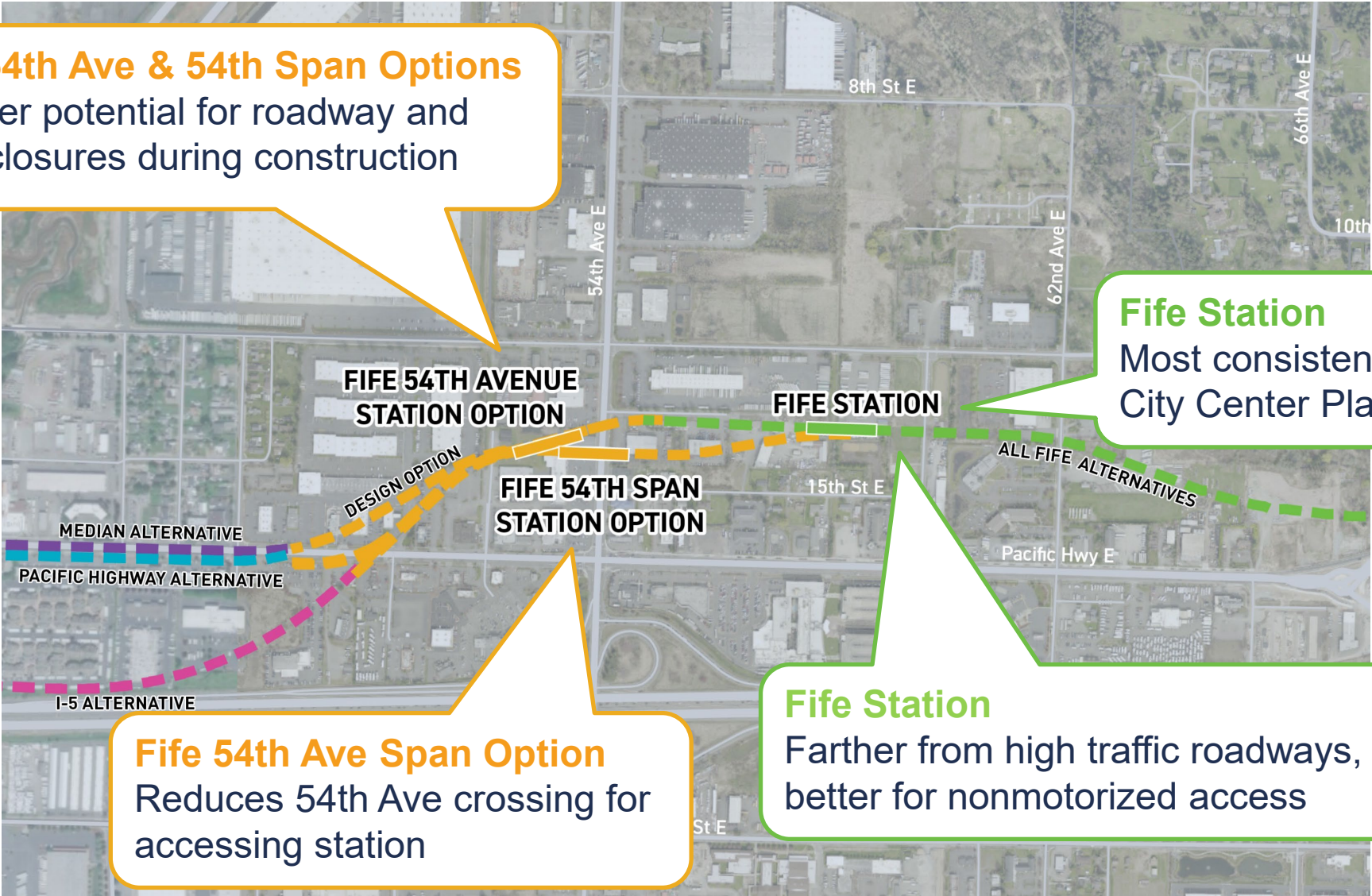
Greatest impact to wetlands, wetlands are low quality

# ***Fife Station Comparison***

# Fife Station & Fife 54th Avenue Station Options

**Fife 54th Ave & 54th Span Options**  
Greater potential for roadway and lane closures during construction

**Fife Station**  
Most consistent with City Center Plan



**Fife 54th Ave Span Option**  
Reduces 54th Ave crossing for accessing station

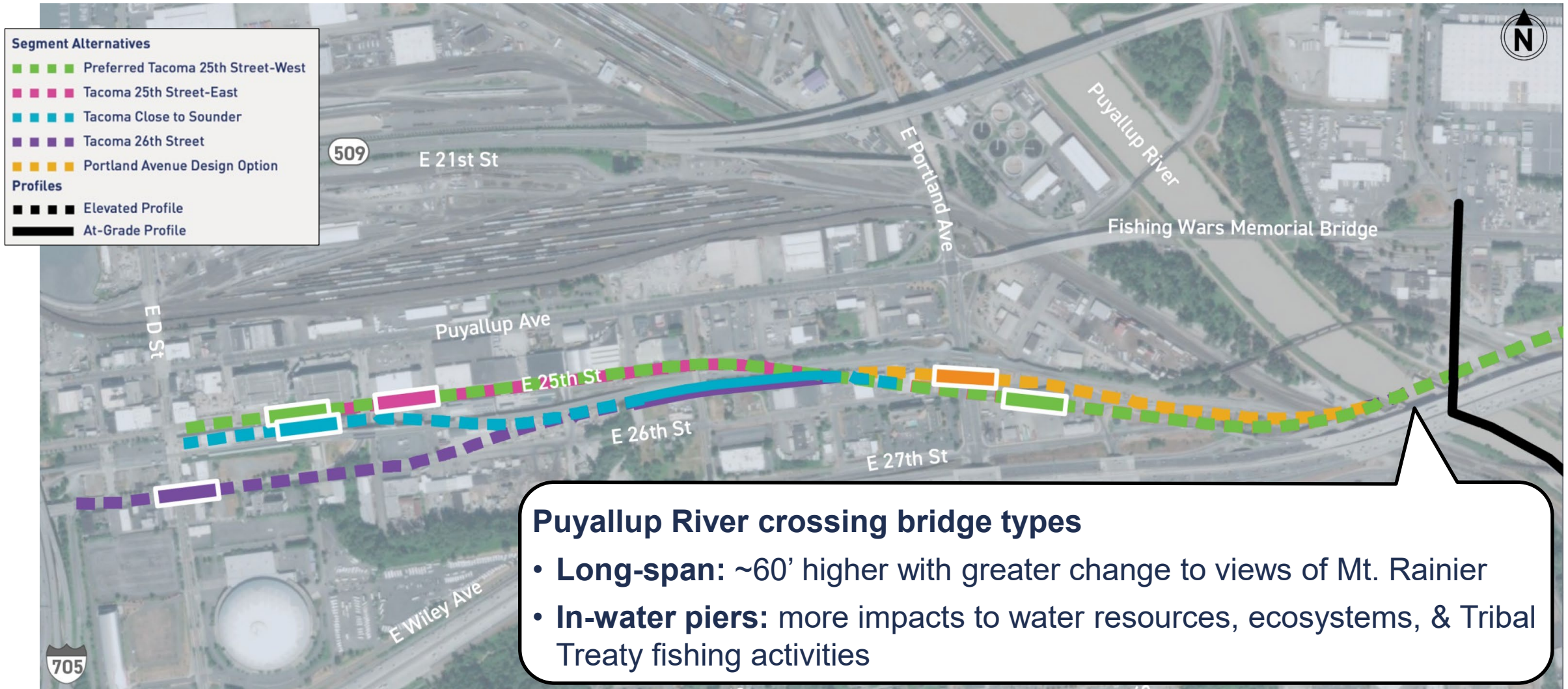
**Fife Station**  
Farther from high traffic roadways, better for nonmotorized access

# Tacoma Segment





# Puyallup River Light Rail Bridge



# ***Puyallup River Light Rail Bridge Trade-offs***

***Clear-span option:*** greater change to views of Mt. Rainier

***In-river pier option:*** greater impact to ecosystems and water resources & Tribal fishing rights



***Existing***



***In-river pier option***



***Clear-span option***

***Tacoma Alternative  
Comparison***

# Tacoma Segment

## Preferred Tacoma 25th Street-West

- Construction access restrictions
- Fewest business displacements (9)
- Temporary full closure of E 25th St & T Line

## Tacoma 25th Street-East

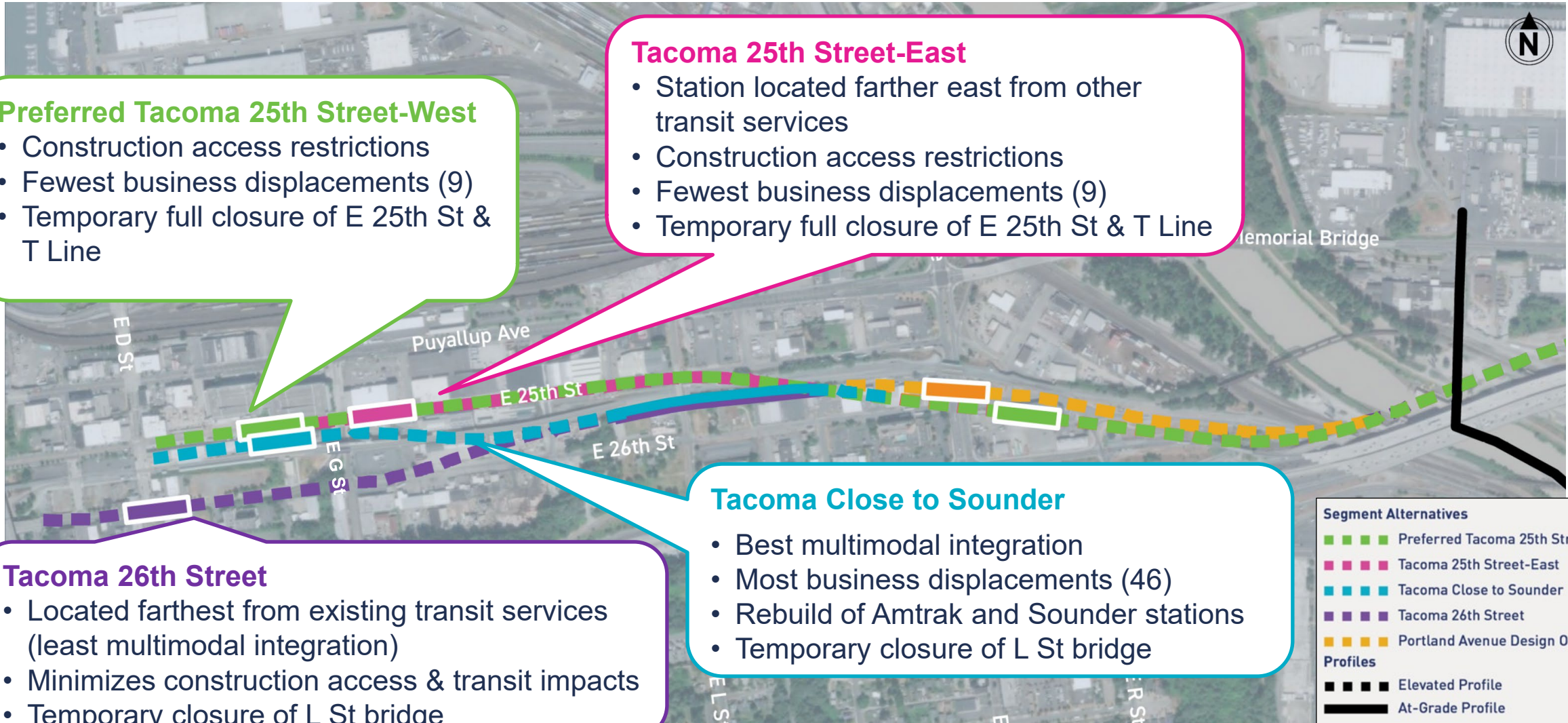
- Station located farther east from other transit services
- Construction access restrictions
- Fewest business displacements (9)
- Temporary full closure of E 25th St & T Line

## Tacoma 26th Street

- Located farthest from existing transit services (least multimodal integration)
- Minimizes construction access & transit impacts
- Temporary closure of L St bridge

## Tacoma Close to Sounder

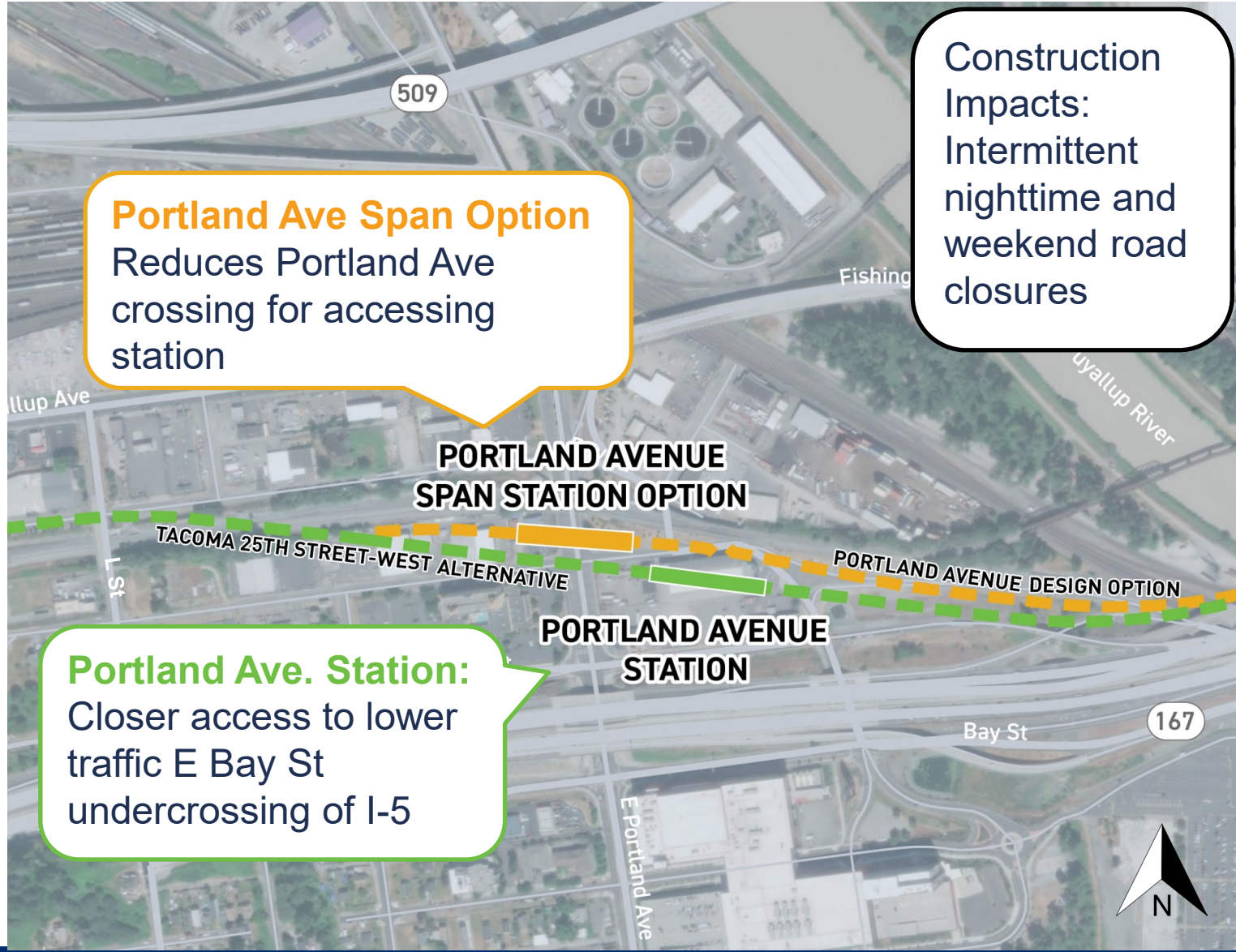
- Best multimodal integration
- Most business displacements (46)
- Rebuild of Amtrak and Sounder stations
- Temporary closure of L St bridge



| Segment Alternatives |                                   |
|----------------------|-----------------------------------|
|                      | Preferred Tacoma 25th Street-West |
|                      | Tacoma 25th Street-East           |
|                      | Tacoma Close to Sounder           |
|                      | Tacoma 26th Street                |
|                      | Portland Avenue Design Option     |
| Profiles             |                                   |
|                      | Elevated Profile                  |
|                      | At-Grade Profile                  |

***Portland Avenue Station  
Comparison***

# Portland Avenue Station Comparison



***Tacoma Dome Station  
Comparison***

# 25th Street-West Station

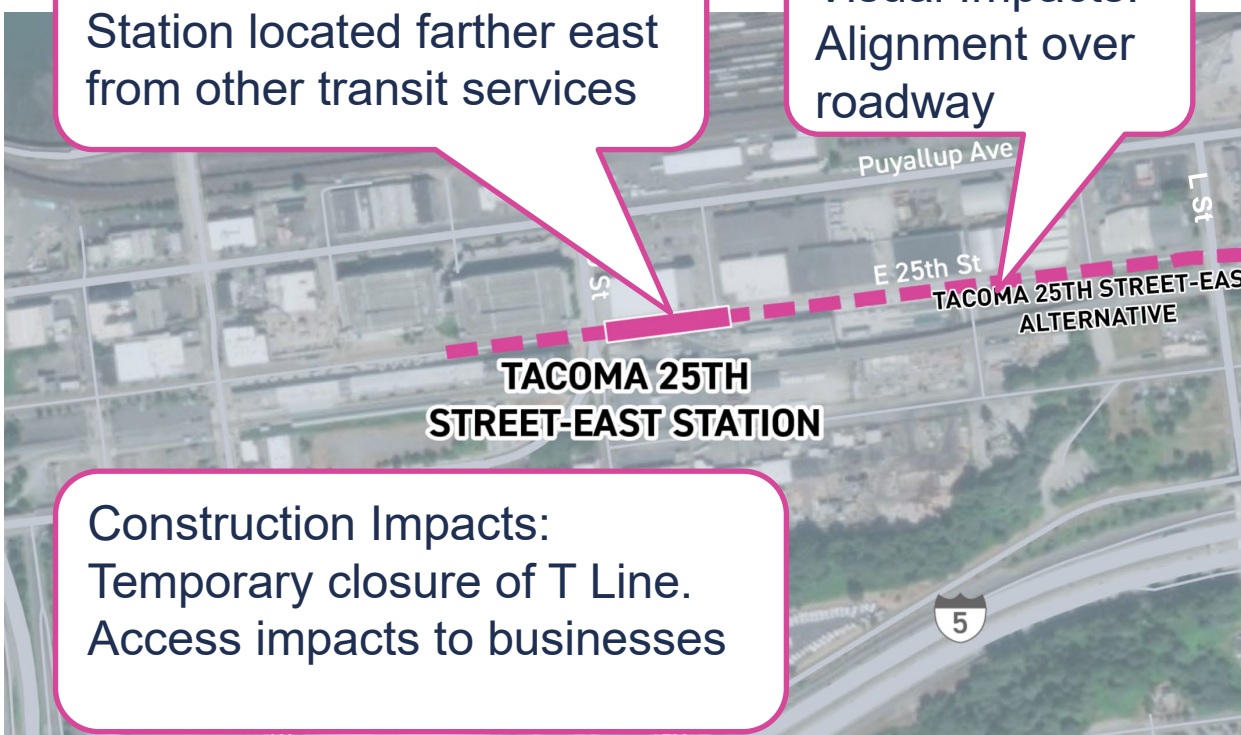
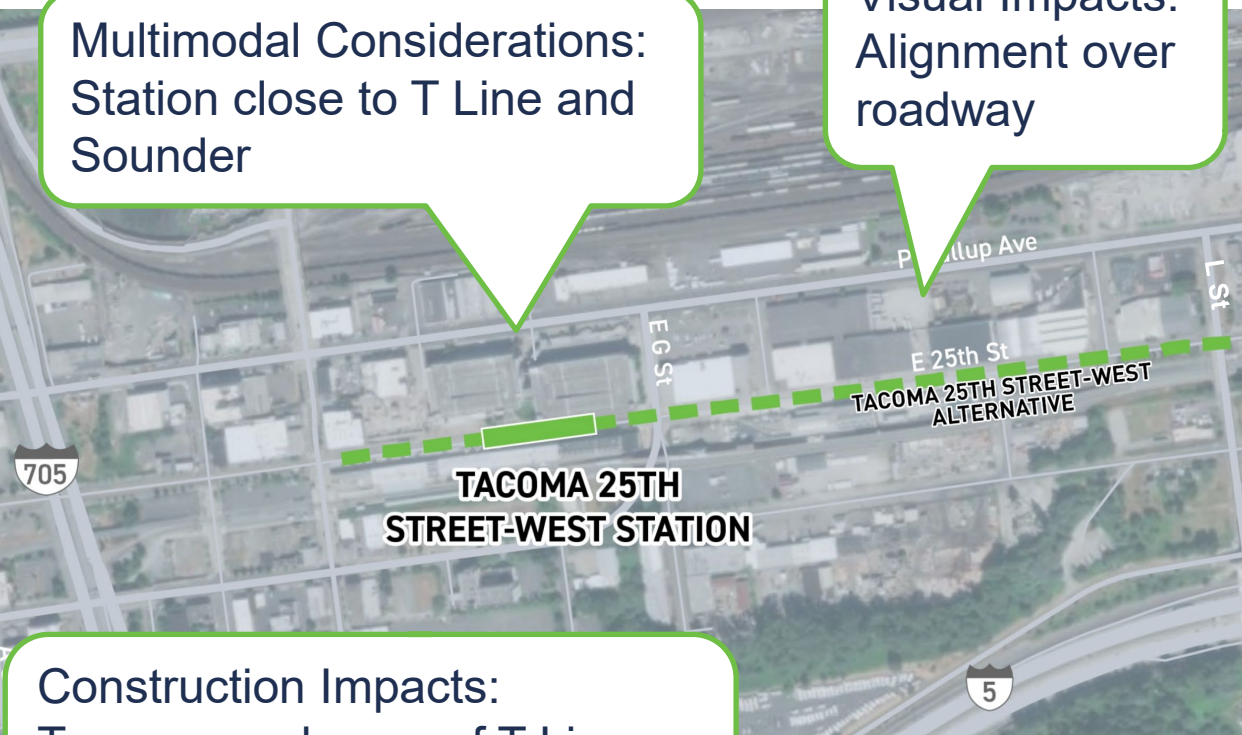
# 25th Street-East Station

Multimodal Considerations:  
Station close to T Line and  
Sounder

Visual Impacts:  
Alignment over  
roadway

Multimodal Considerations:  
Station located farther east  
from other transit services

Visual Impacts:  
Alignment over  
roadway



Construction Impacts:  
Temporary closure of T Line.  
Access impacts to businesses

Construction Impacts:  
Temporary closure of T Line.  
Access impacts to businesses

| Stations  | Alignment Profile   |          |
|---|---|----------|
|  |  | Elevated |
|  |  | At Grade |



# Close to Sounder Station

# 26th Street Station

Multimodal Considerations:  
Opportunity for fully integrated transit hub

Business Displacements:  
Has the most displacements (43); 37 of which are west of L St and at Freighthouse Square

Multimodal Considerations:  
Located farthest from transit services

TACOMA CLOSE TO SOUNDER STATION

TACOMA CLOSE TO SOUNDER ALTERNATIVE

TACOMA 26TH STREET STATION

TACOMA 26TH STREET ALTERNATIVE

Construction Impacts:  
Temporary closure of L St bridge.  
Rebuild of Amtrak and Sounder station

Construction Impacts:  
Temporary closure of L St bridge and E 26th St



Stations

Alignment Profile



Elevated  
At Grade

***Question and answer session***

Question and Answer

### Welcome to Q&A

Questions you ask will show up here. Only host and panelists will be able to see all questions.

Type your question here...



***Draft EIS public comment period***

# *How to access the Draft EIS*

- **Online:** <https://www.soundtransit.org/system-expansion/tacoma-dome-link-extension/documents>
- **Paper copies:** see the list of library and community center locations at [soundtransit.org/tdlink-deis](https://www.soundtransit.org/tdlink-deis)
- **Request a paper copy or flash drive:** contact Dominique Jones at 206-689-4783 or email [dominique.jones@soundtransit.org](mailto:dominique.jones@soundtransit.org).

# Draft EIS comment period



- **60-day comment period:** Dec. 13, 2024 – Feb. 10, 2025
- Seeking public, Tribal, and agency feedback on Draft EIS analysis
- **Ways to comment:**
  - Today during the hearing portion
  - In-person public meetings/hearings (info. on next slide)
  - Online: [soundtransit.org/tdlink-comments](https://soundtransit.org/tdlink-comments)
  - Email: [tdlinkdeis@soundtransit.org](mailto:tdlinkdeis@soundtransit.org)
  - Voicemail: 206-257-2144
  - Mail:  
TDLE Draft Environmental  
Impact Statement Comments  
c/o Elma Borbe  
Sound Transit  
401 S. Jackson St.  
Seattle, WA 98104

***Comments will be shared with the Sound Transit Board and will be responded to in a Final EIS, anticipated to be published in 2027.***

# ***Draft EIS in-person public meetings/hearings***

**Jan. 23, 5:30-7:30 p.m.** at Greater Tacoma Convention Center

- 1500 Commerce Street, Tacoma

**Jan. 28, 5:30-7:30 p.m.** at Federal Way Performing Arts and Events Center

- 31501 Pete Von Reichbauer Way South, Federal Way

**Jan. 30, 5:30-7:30 p.m.** at Fife Community Center

- 2111 54th Avenue East, Fife



***Intermission***  
***(5-minute break)***



***Public hearing***

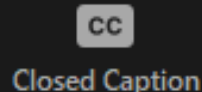
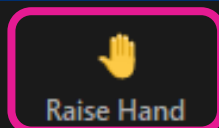
# *Comment guidelines*

- Focus your comments on the Draft EIS findings and analysis
- We will respond to all substantive comments in the Final EIS
- Be respectful of others participating; if your comments are defamatory or otherwise inappropriate, you will be muted and removed from the meeting
- If you'd like to receive notice of the Final EIS, please include your contact information (name and email address) in the Q&A box


# *Public hearing process*

- Raise your hand to comment
- You may speak only once during this meeting
- Please say your name before starting your comment
- You will have two minutes to comment. If you are using an ASL or language interpreter, you have three minutes to comment
- A court reporter will document your comment.
- The moderator will let you know when you have 30 seconds left and then again when you have 10 seconds left to comment.
- We will be here until 1:30pm to hear comments (or later if hands are still raised)

**Click the “Raise Hand” button if you’d like to give a comment**



Zoom

 The host would like you to unmute



***Public hearing***

***30 seconds***

***10 seconds***

# *Public hearing (break)*

*Please use the “Raise Hand” feature if you’d like to comment when we return*



Raise Hand



Q&A



Closed Caption



Interpretation



# Draft EIS comment period



- **60-day comment period:** Dec. 13, 2024 – Feb. 10, 2025
- Seeking public, Tribal, and agency feedback on Draft EIS analysis
- **Ways to comment:**
  - In-person public meetings/hearings (all 5:30-7:30 p.m.)
    - Jan 23: Tacoma
    - Jan 28: Federal Way
    - Jan. 30: Fife
  - Online: [soundtransit.org/tdlink-comments](https://soundtransit.org/tdlink-comments)
  - Email: [tdlinkdeis@soundtransit.org](mailto:tdlinkdeis@soundtransit.org)
  - Voicemail: 206-257-2144
  - Mail:  
TDLE Draft Environmental  
Impact Statement Comments  
c/o Elma Borbe  
Sound Transit  
401 S. Jackson St.  
Seattle, WA 98104

***Comments will be shared with the Sound Transit Board and will be responded to in a Final EIS, anticipated to be published in 2027.***

*Thank you.*



 [soundtransit.org](https://www.soundtransit.org)

