

Sept. 24, 2024



West Seattle Link Extension

**Final EIS drop-in events
meeting materials**

How we got here and where we are going

Station planning / preliminary design

2016

2017

2018

2019

2020

2021

Nov 2016

Voters approve funding for ST3, including 62 miles of new light rail across the region.

Mar 2018 – Apr 2019

Sound Transit develops and refines alternatives based on technical evaluations and public feedback.

Feb – Mar 2018

Sound Transit hosts early scoping open houses and comment period to collect public feedback on representative route and station locations included in ST3 plan.

Feb – March 2019

Sound Transit hosts scoping open houses and comment period to collect public feedback on route and station locations to date and topics to study in a Draft Environmental Impact Statement (EIS).

Nov 2019

Sound Transit hosts Neighborhood Forum to consolidate feedback on how the stations would best serve communities, what you value about your community, and how you travel around the neighborhood / commute.

May 2018

Sound Transit hosts Neighborhood Forum to gather feedback on what you like about your neighborhood, how you spend time in your area, and how alternatives fit your neighborhood's vision/values.

May & Oct 2019

The Sound Transit Board identifies route and station locations (alternatives) to study in Draft EIS.

Alternatives development / environmental review



How we got here and where we are going

Station planning / preliminary design

Jan 2022

Sound Transit publishes the Station Planning Progress Report alongside the WSBLE Draft EIS to help communities understand the opportunities and challenges of the different alternatives.

Oct 2023

Sound Transit hosts WSLE Station Planning Forum event and additional engagement to gather feedback about concepts for access, urban design, and transit-oriented development at the stations.

March 2024

Report back to the public and stakeholders on how feedback was incorporated as part of ongoing station design.

Late 2024 - Early 2025

Updated station planning progress report will be available. Will share design updates for project and gather feedback.

Through 2027

Ongoing engagement on project design

2022

2023

2024

2025

2026

2027

We are here 

July 2022

Sound Transit Board identifies preferred route and station locations for West Seattle Link Extension and requests further studies of the refinements to the preferred alternatives. Refinements from further studies are being incorporated into the Final EIS.

Jan 2022

Sound Transit publishes Draft EIS for public review and 90-day public comment period.

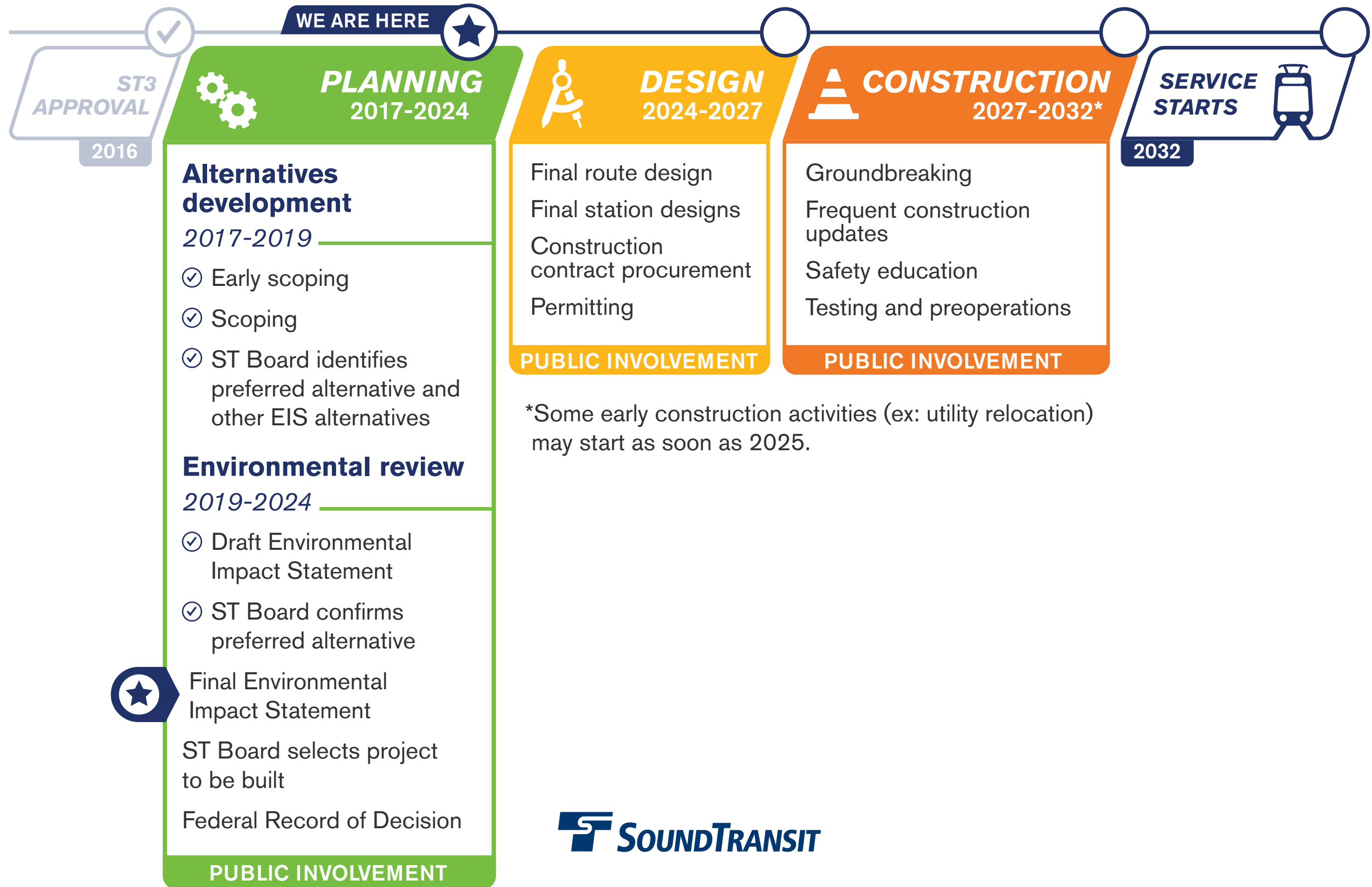
September 2024

Final EIS published. In the coming weeks, the Sound Transit Board will consider action to select the project to be built.

Alternatives development / environmental review



West Seattle Link Extension project timeline



West Seattle Link Extension project benefits



3 Line

- **Reduces transit travel time** from Alaska Junction to Westlake Station by 50% once Ballard Link Extension is complete.
- **Improves** transit service **frequency, reliability** and **capacity**.
- Facilitates redevelopment near stations, with focus on **affordable housing**.
- **Provides travel alternative** if West Seattle Bridge is congested or closed for repairs.



Link light rail operates on exclusive right of way separate from vehicle lanes

Engagement throughout design phase



DESIGN
2024-2027

Route and station design

- Engagement at design milestones and to plan for construction
- Station naming
- Identify artists for station art
- Property acquisition and tenant relocation
- Early construction activities (i.e. utility relocation) may start

Permitting

Construction contract procurement

PUBLIC INVOLVEMENT



Ongoing station design engagement



Pre-construction planning



Station naming



Station artist selection

What to expect during construction

CONSTRUCTION* 2027-2032

- Demolition and clearing where necessary to build and operate the light rail guideway
- Earth work such as stormwater systems, column footings, retaining walls and tunneling
- Guideway and station construction

Ongoing conversations with anyone affected by construction

Safety education

Testing and pre-operations

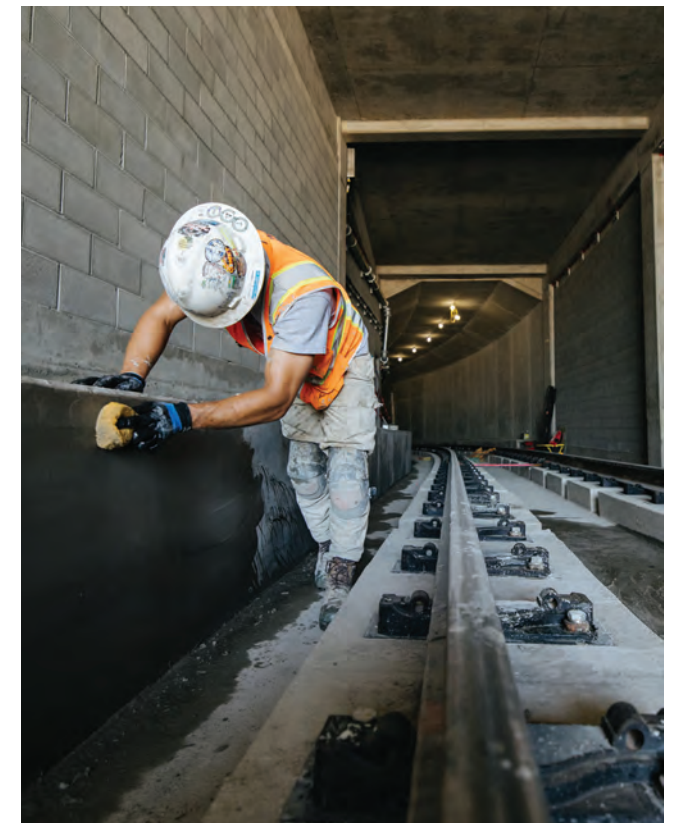
*Some early construction activities (ex: utility relocation) may start as soon as 2025.

PUBLIC INVOLVEMENT

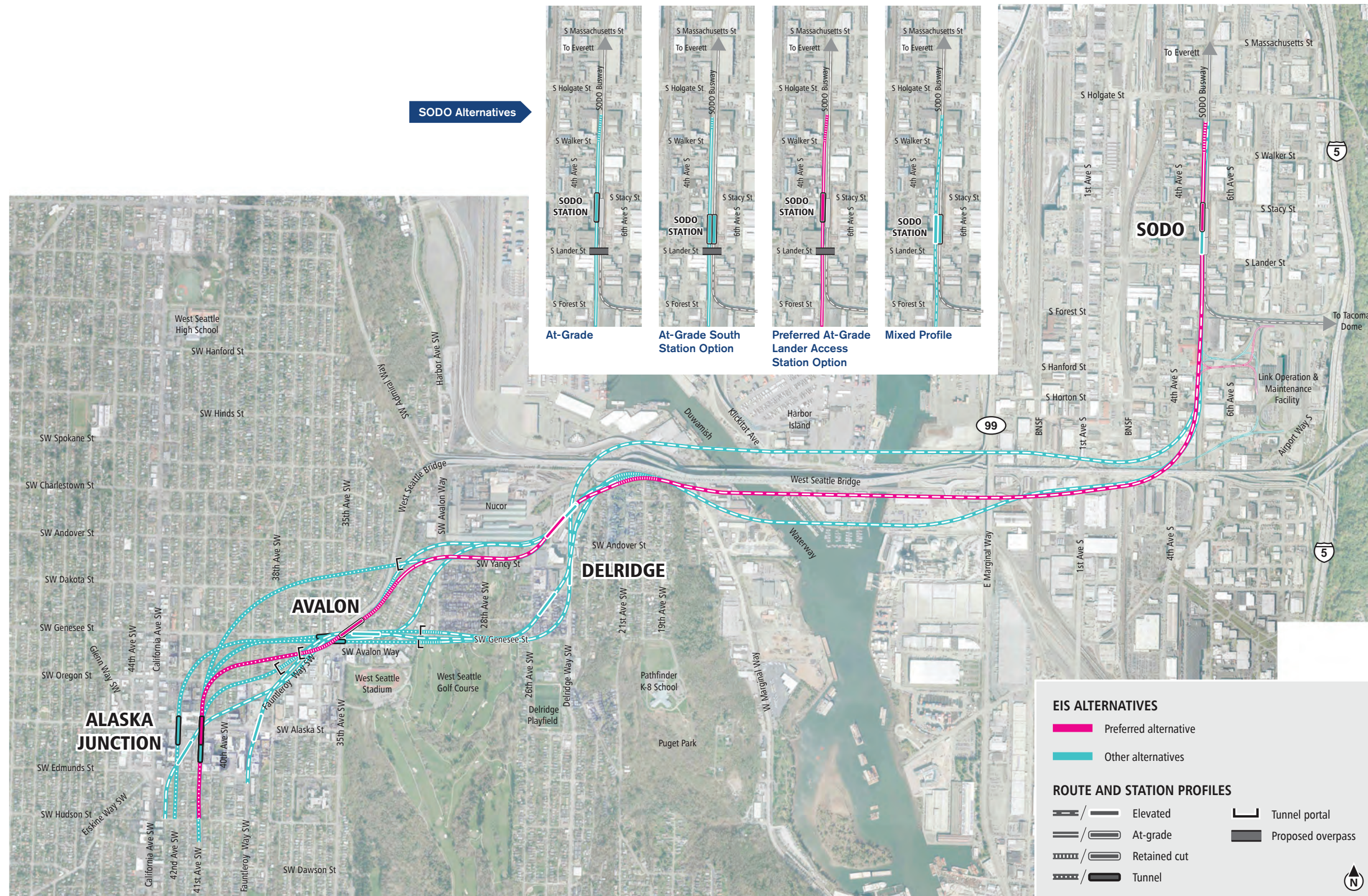


Good neighbor commitments

- Construction impact mitigation (noise, lights, dust)
- Construction updates
- Business relations
- 24-hour construction hotline
- Safety education
- Testing and pre-operations



West Seattle Link Extension - Final EIS alternatives



West Seattle Link Extension as part of the regional light rail network

2032

West Seattle Link opens

West Seattle Link Extension will connect to the existing SODO Station when the extension opens, anticipated in 2032.

Passengers will need to transfer to the existing 1 Line at SODO Station to continue their journey, as the new downtown tunnel won't be open until 2039.

Until BLE opens, King County Metro will continue to run buses between West Seattle and downtown, giving passengers additional options for their trip.

Link service plan: 2032

- ① Lynnwood–Federal Way
- ② Lynnwood–Redmond
- ③ West Seattle–SODO
- T Tacoma Dome–St Joseph
- Transfer



Link service plan: 2039

- ① Ballard–Tacoma
- ② Mariner–Redmond*
- ③ Everett–West Seattle*
- T Tacoma Dome–St Joseph
- Transfer



2039

Ballard Link Extension opens

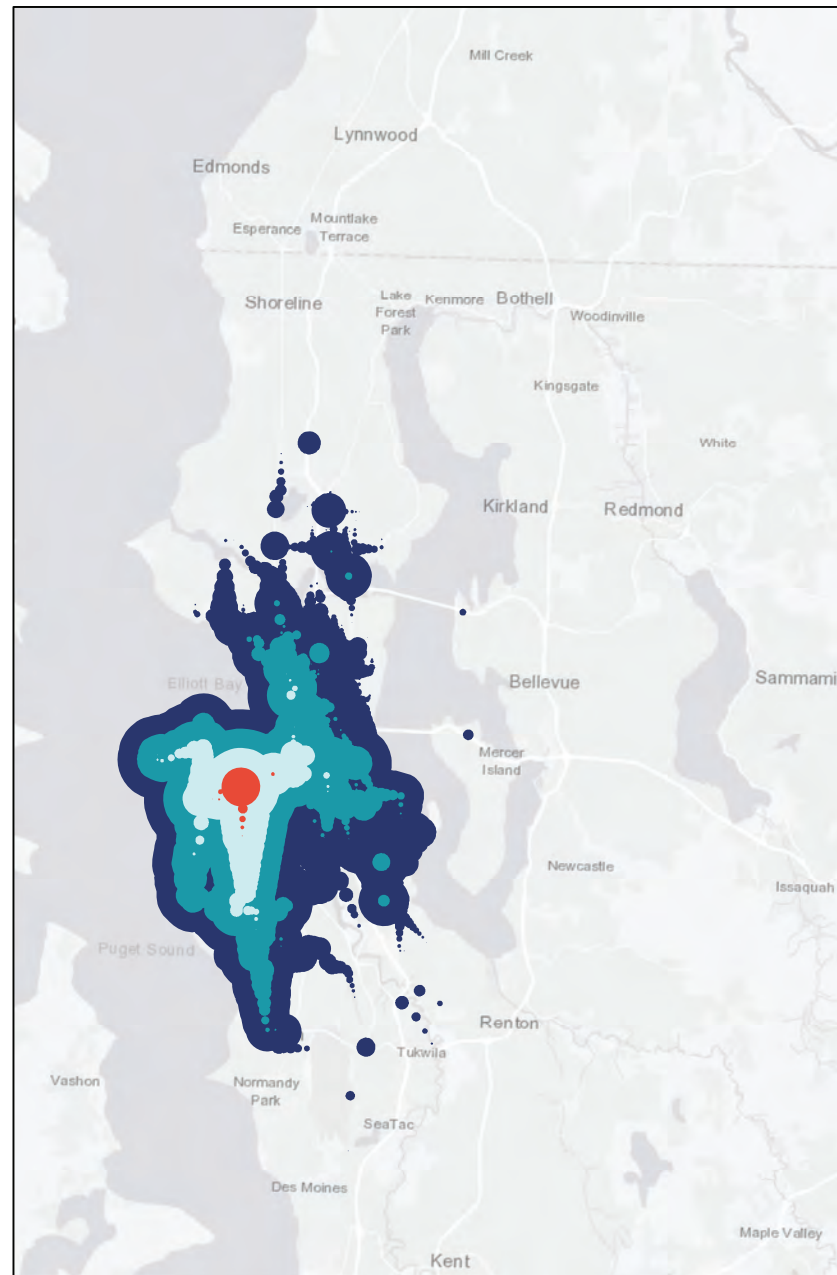
3 Line: one-seat ride from West Seattle through downtown Seattle to Everett.

1 Line: one-seat ride from Ballard through downtown Seattle to Tacoma.

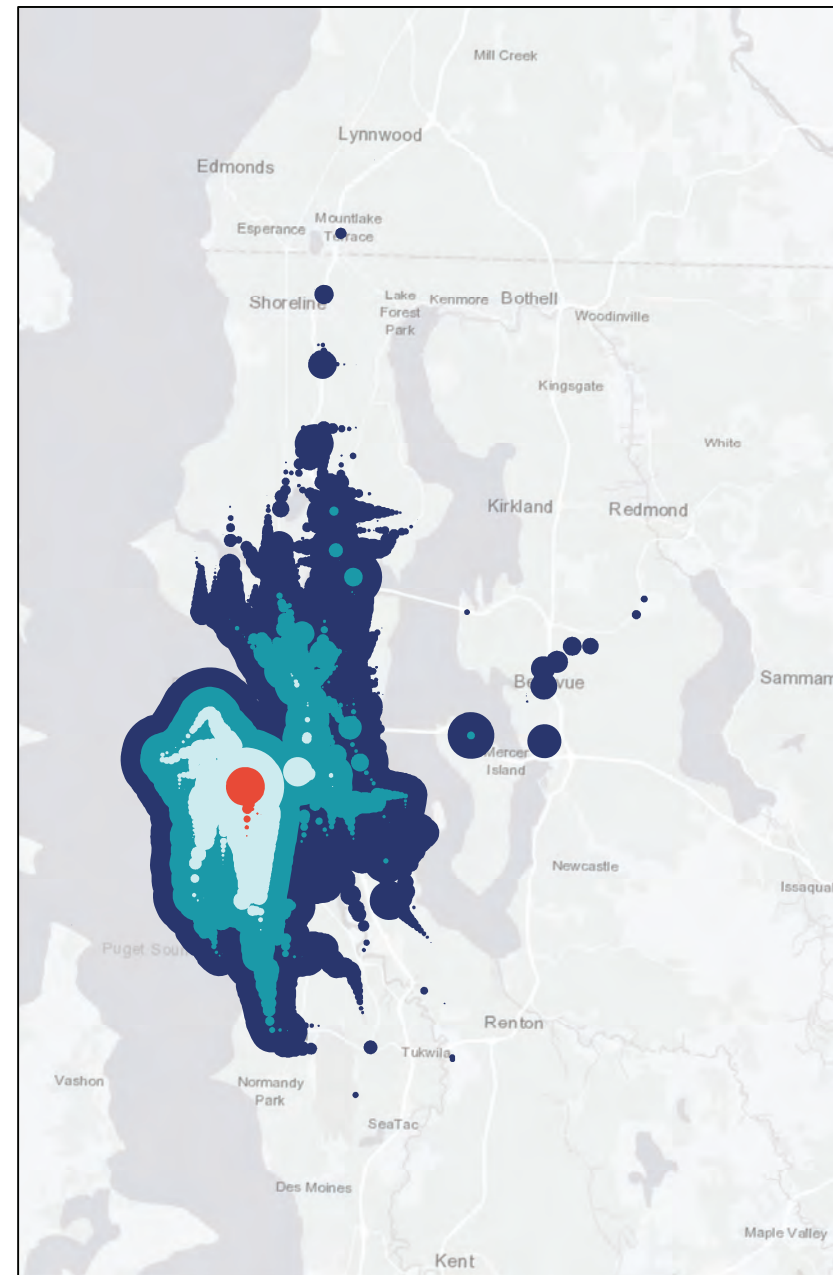
Transit Travel Sheds – Delridge Station

Estimates about how far you can travel via transit within 15, 30, 45, and 60 minutes

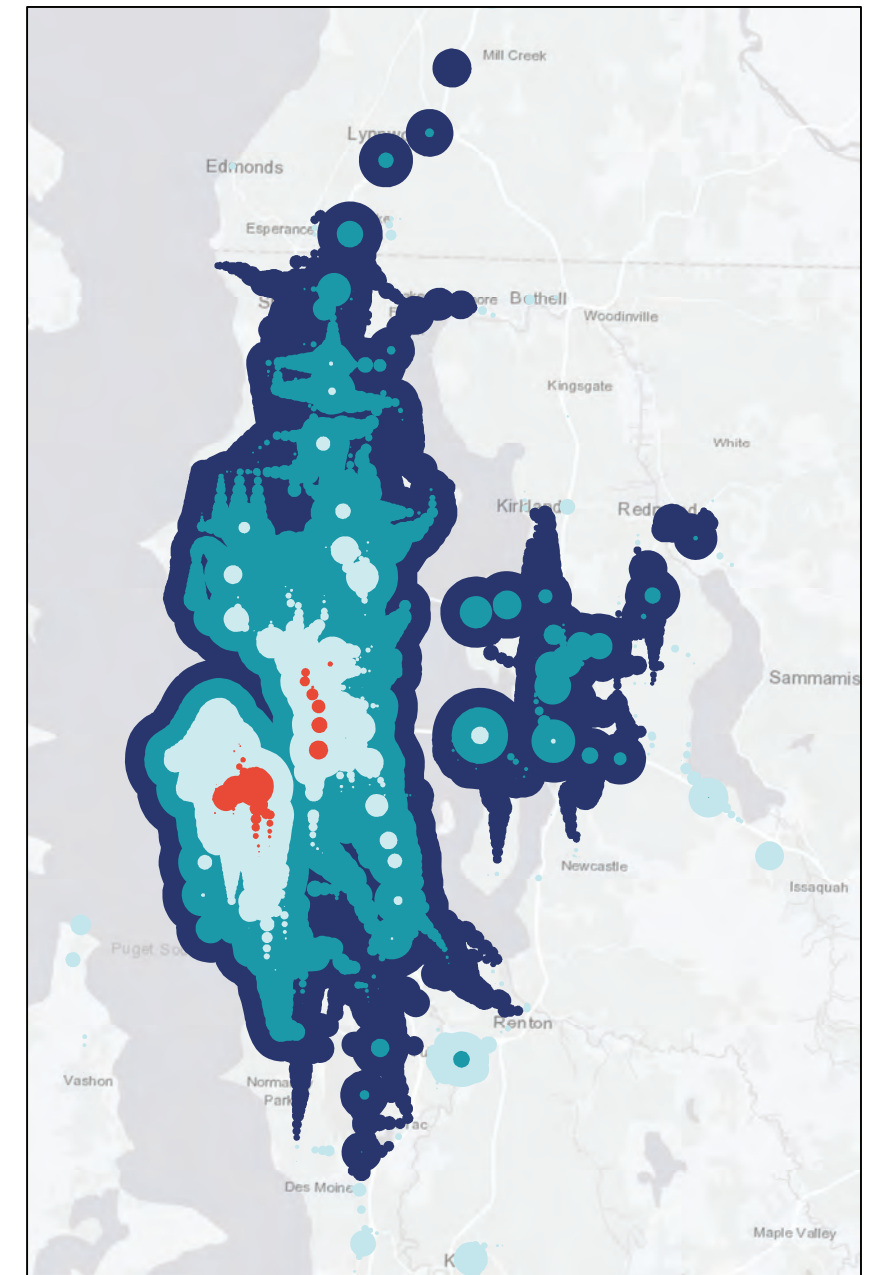
Existing



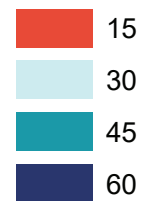
2042 – Without WSLE and BLE



2042 – With WSLE and BLE



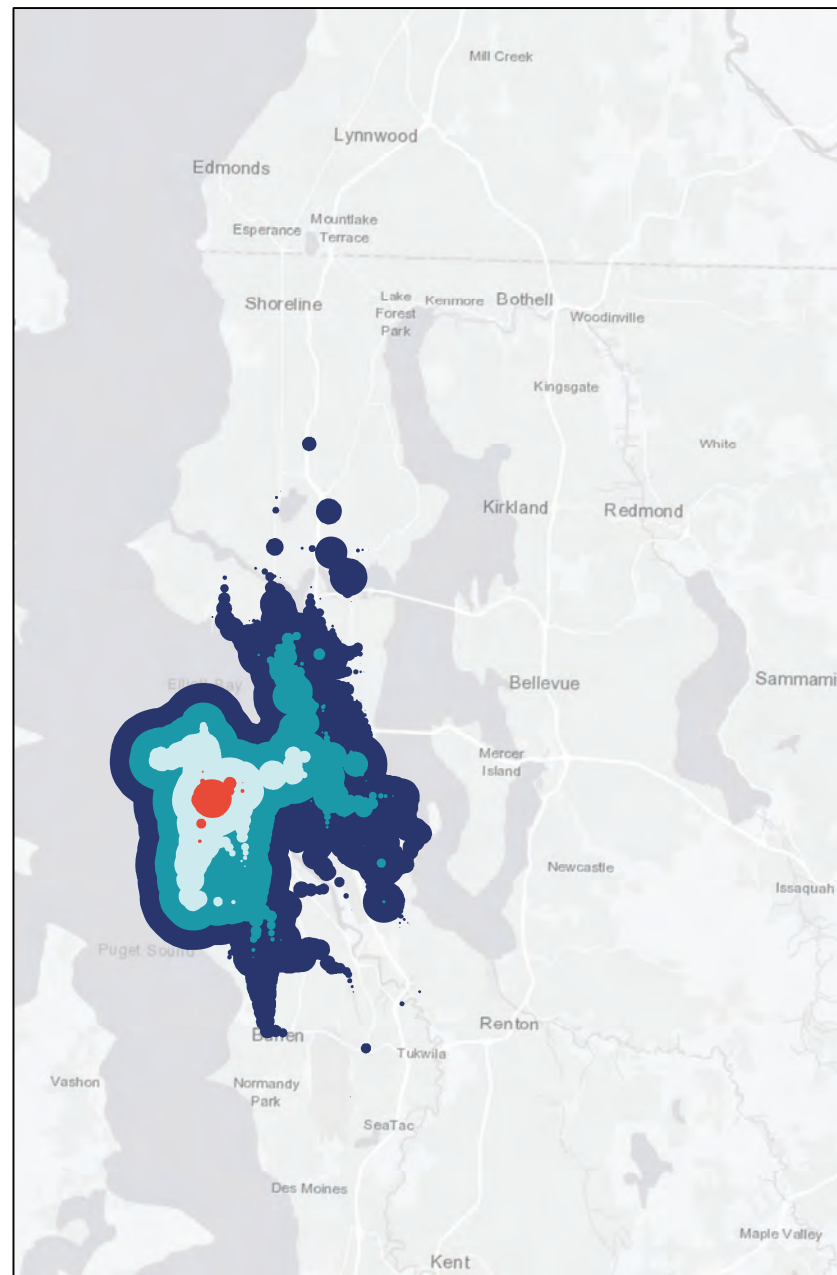
Minutes



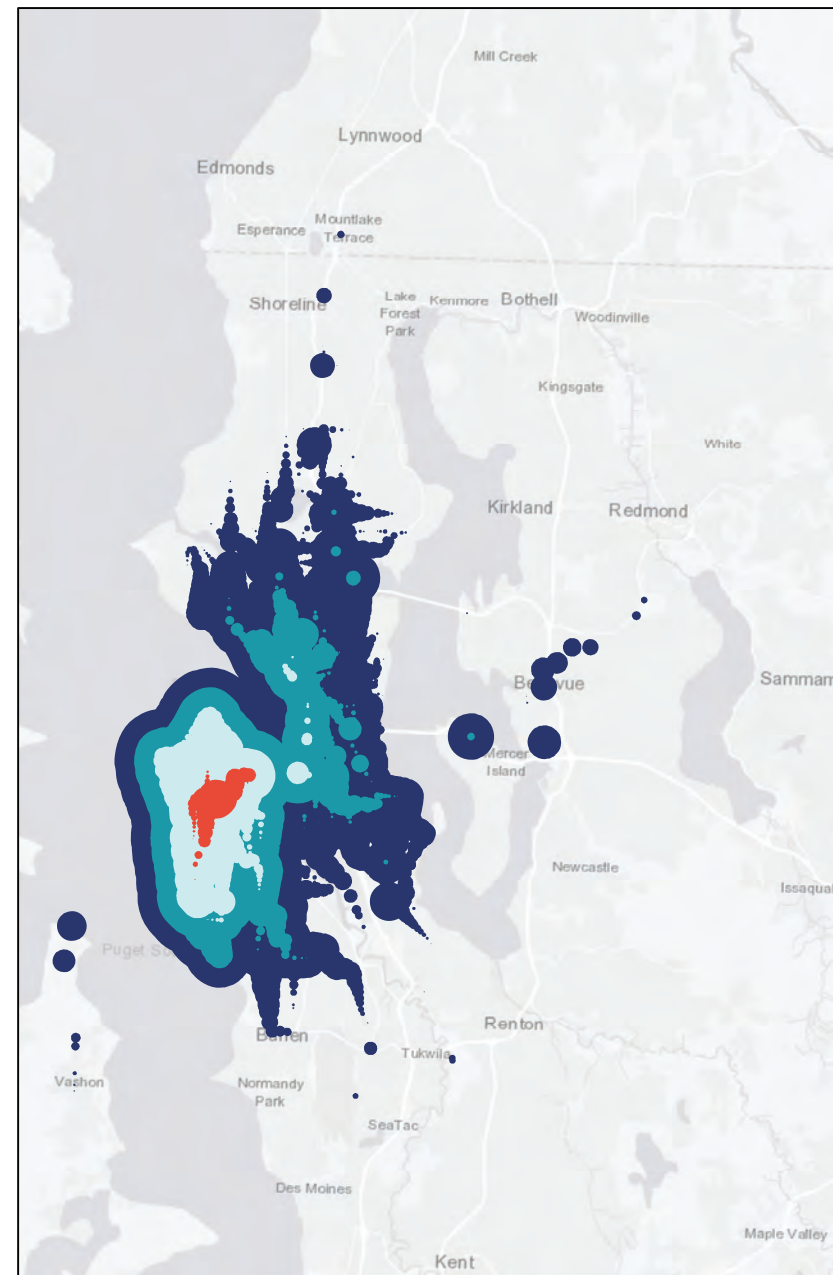
Transit Travel Sheds – Alaska Junction Station

Estimates about how far you can travel via transit within 15, 30, 45, and 60 minutes

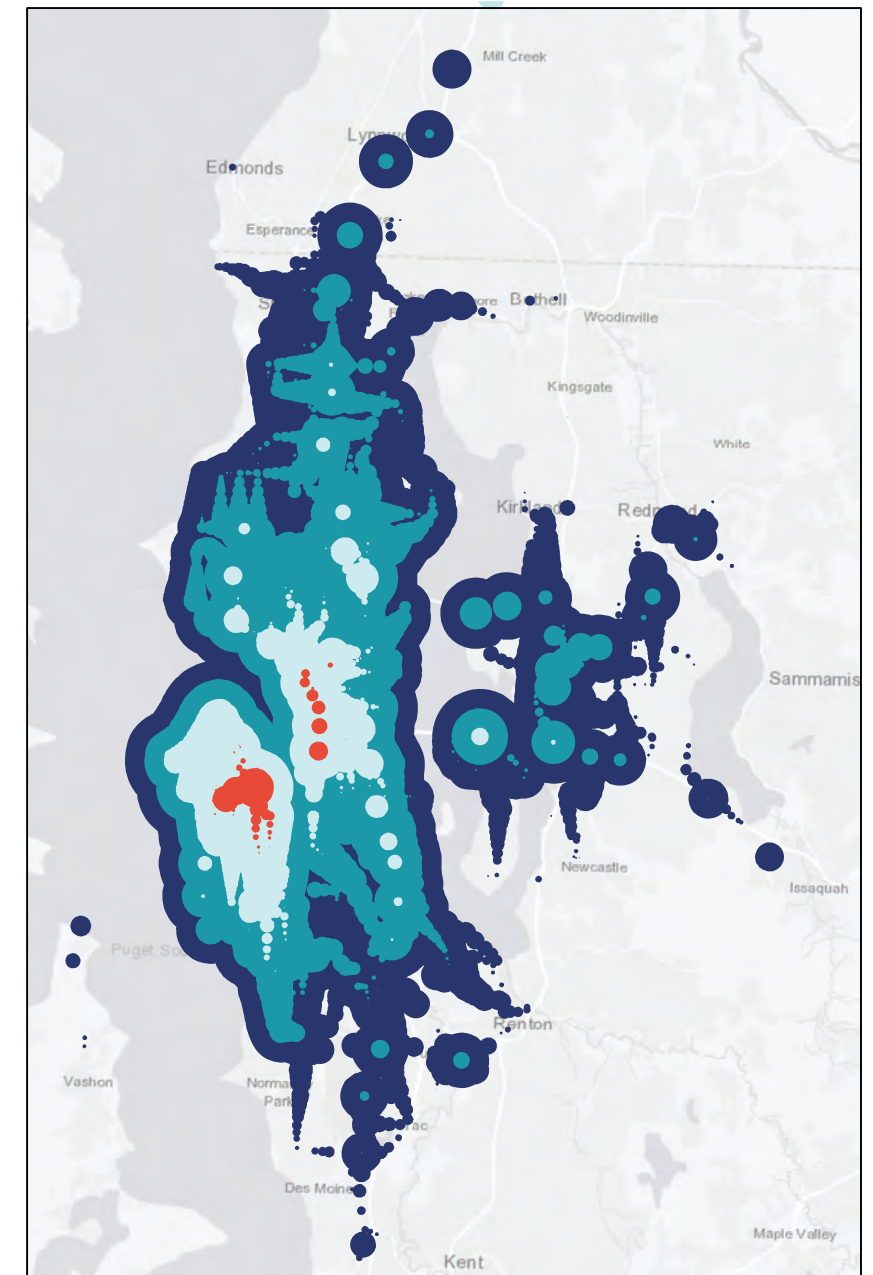
Existing



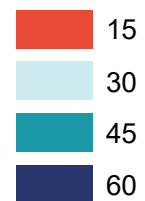
2042 – Without WSLE and BLE



2042 – With WSLE and BLE



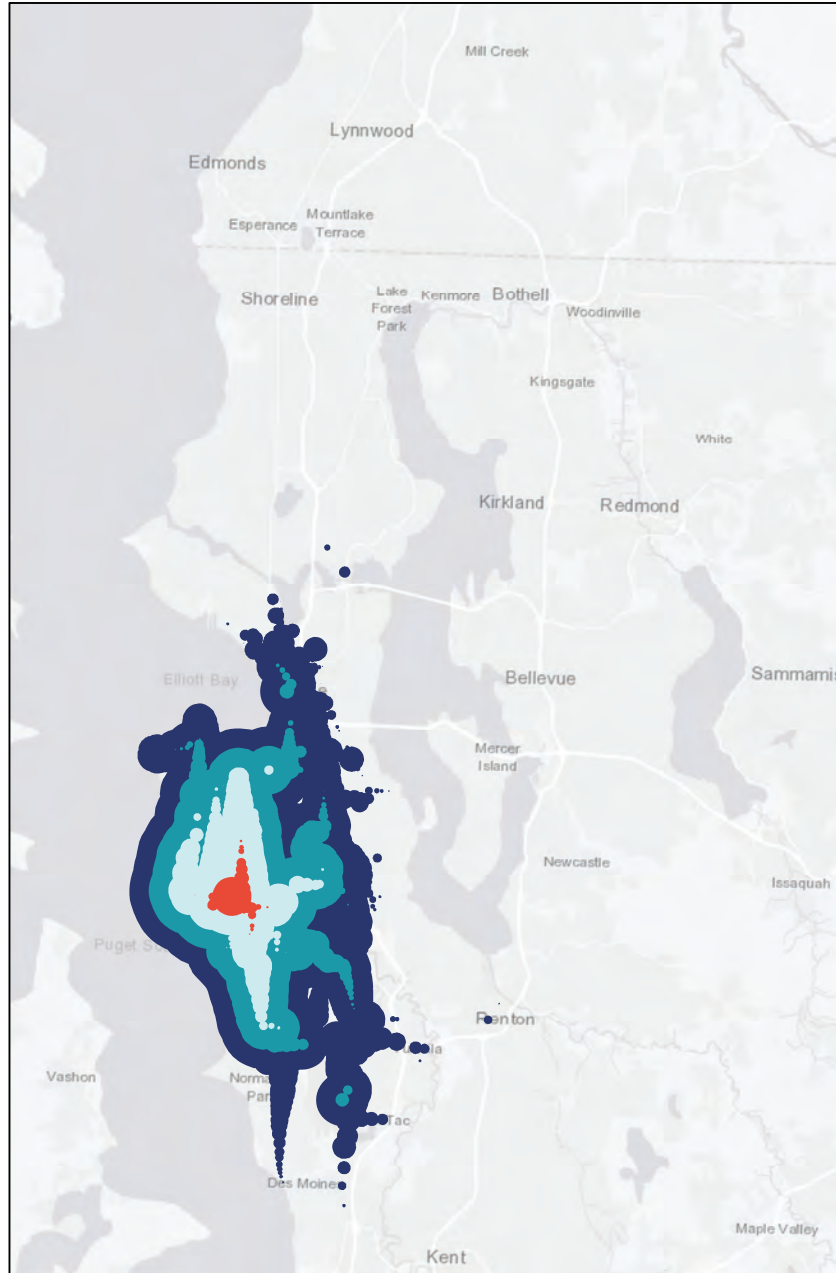
Minutes



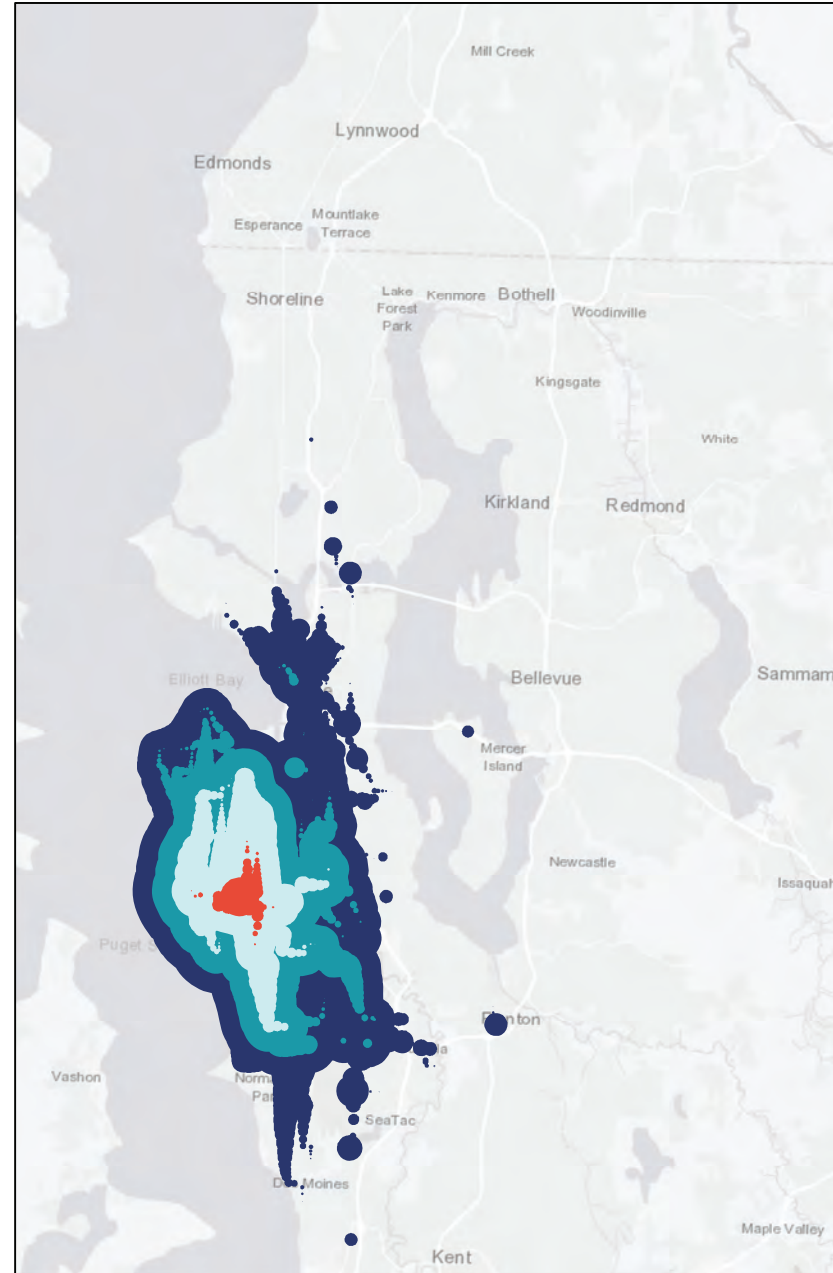
Transit Travel Sheds – Westwood Village

Estimates about how far you can travel via transit within 15, 30, 45, and 60 minutes

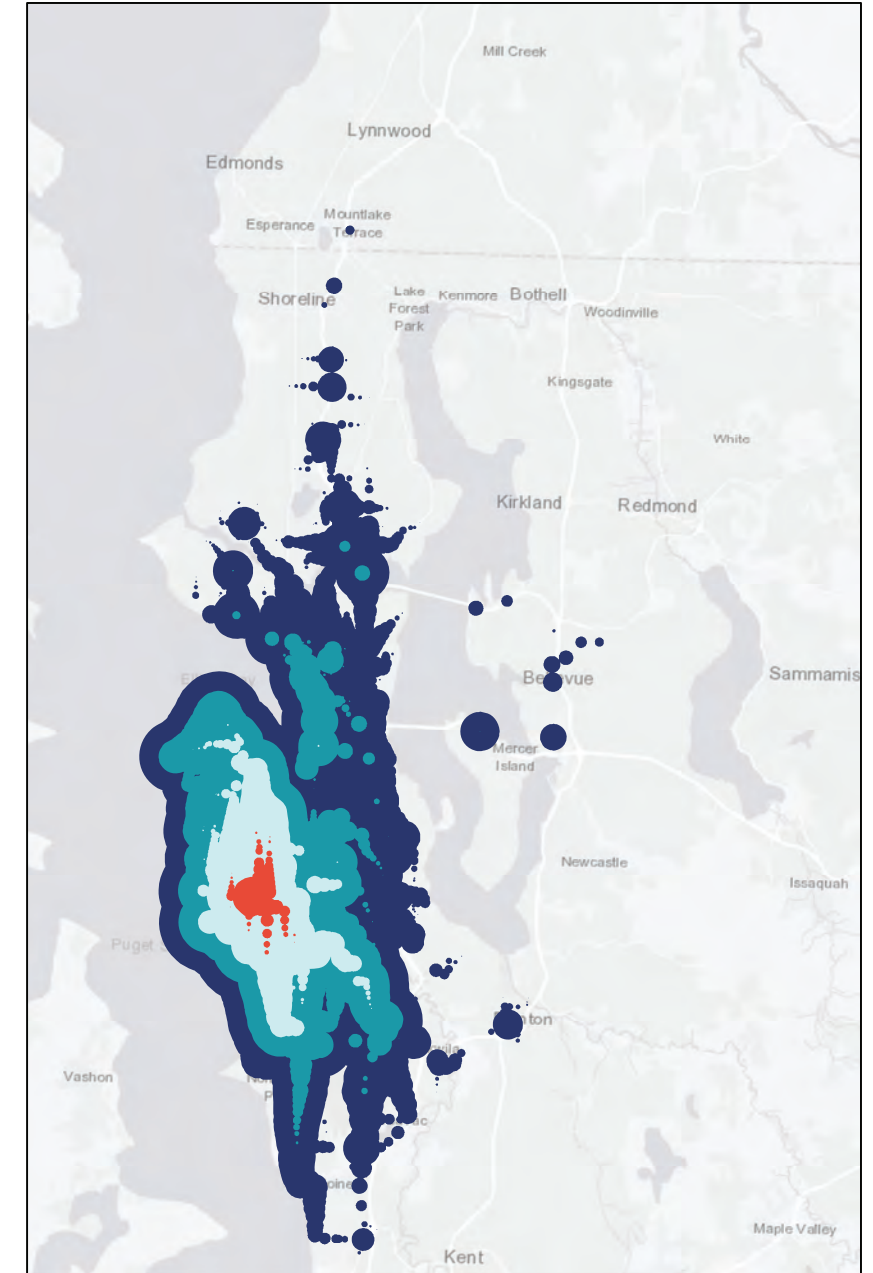
Existing



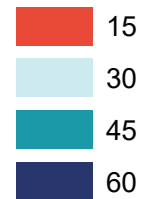
2042 – Without WSLE and BLE



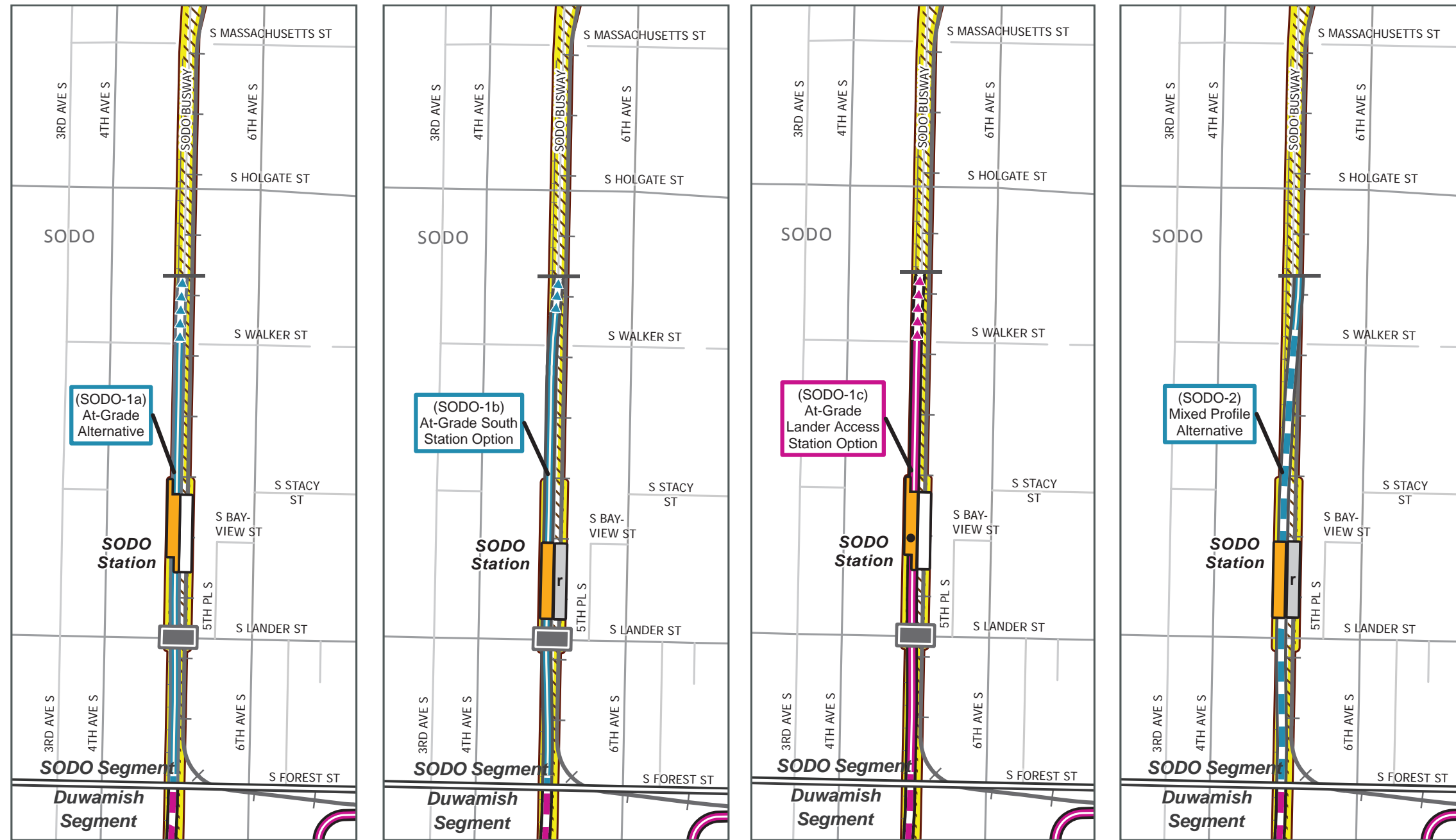
2042 – With WSLE and BLE



Minutes



SODO segment alternatives



Preferred Alternative

- Elevated
- At-Grade
- Retained Cut

Other Alternatives

- Elevated
- At-Grade
- Retained Cut

Station (● Indicates Preferred Alternative)

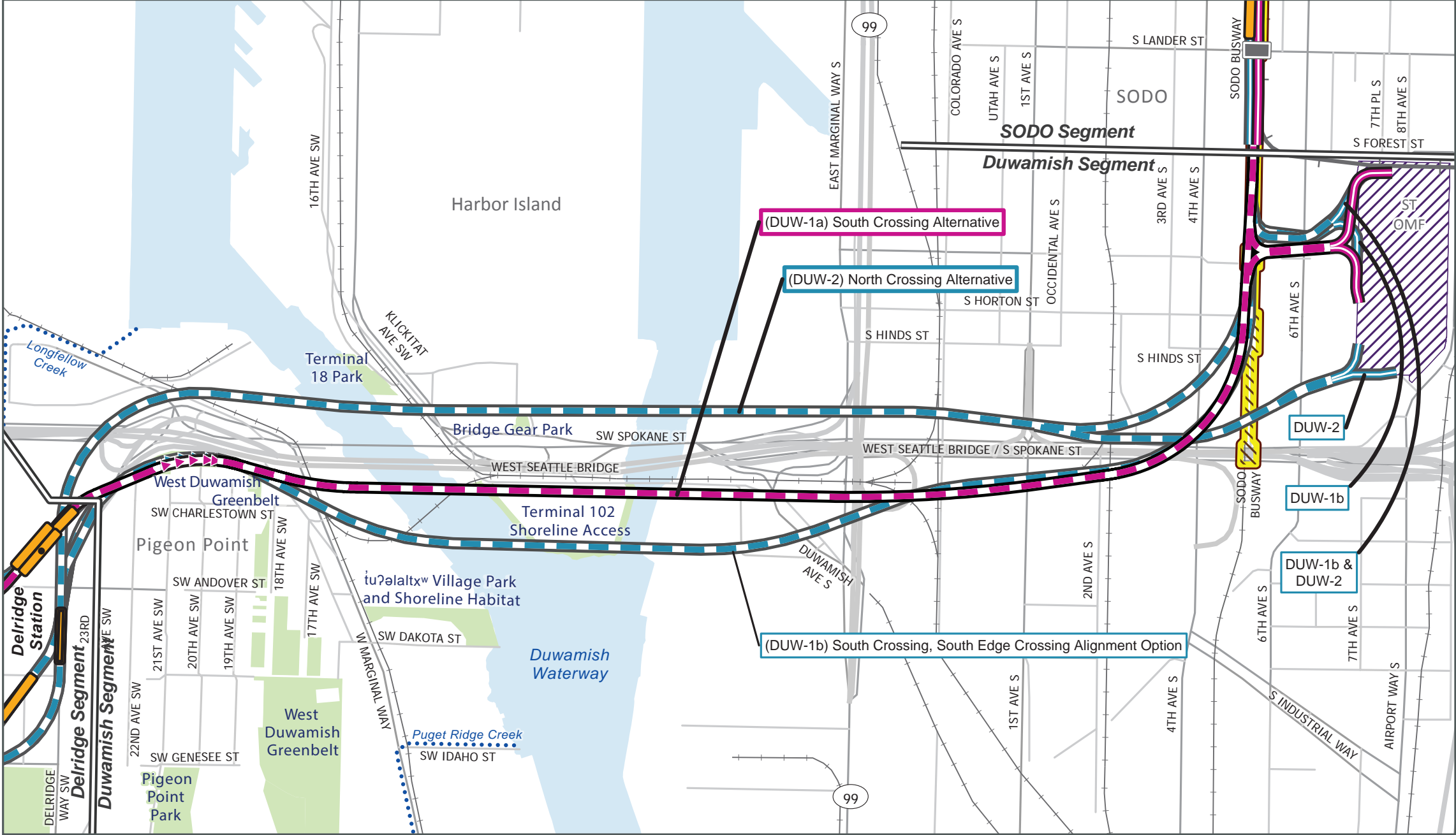
- New
- Existing
- Relocated
- Segment Line

Existing Link Light Rail

- Railroad
- SODO Busway
- Proposed Overpass



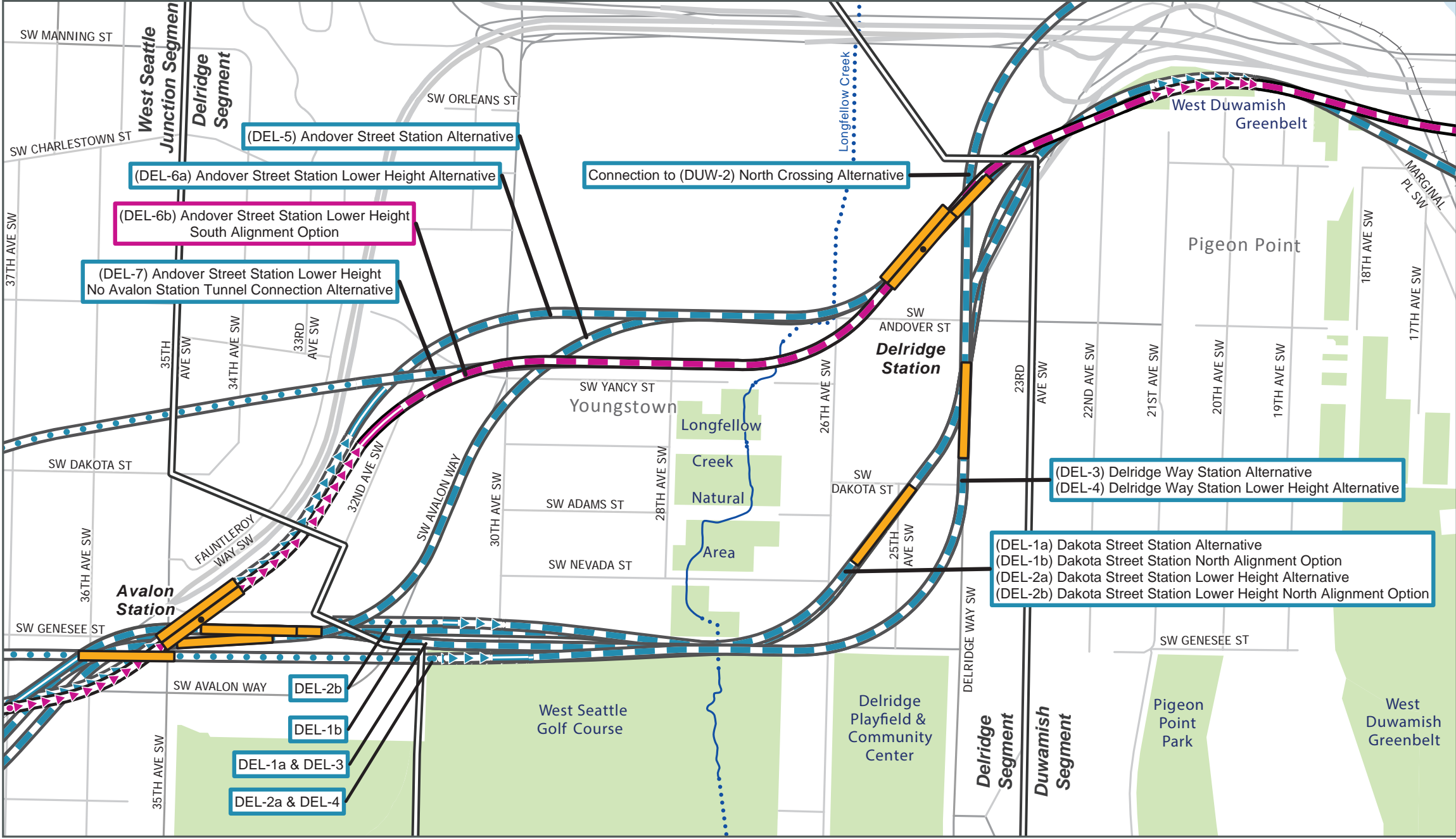
Duwamish segment alternatives



Preferred Alternative		Other Alternatives			
Elevated	Retained Cut	Elevated	Retained Cut	Existing Link Light Rail	Sound Transit Operations and Maintenance Facility (ST OMF)
At-Grade		At-Grade		Railroad	Piped Stream
				SODO Busway	Park
		Station (● Indicates Preferred Alternative)		Proposed Overpass	
		New			



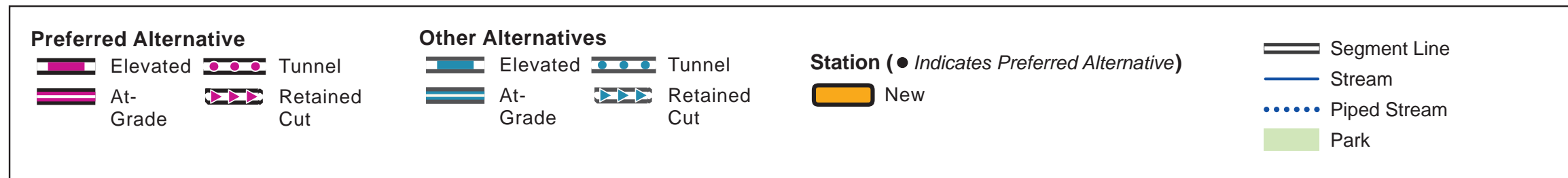
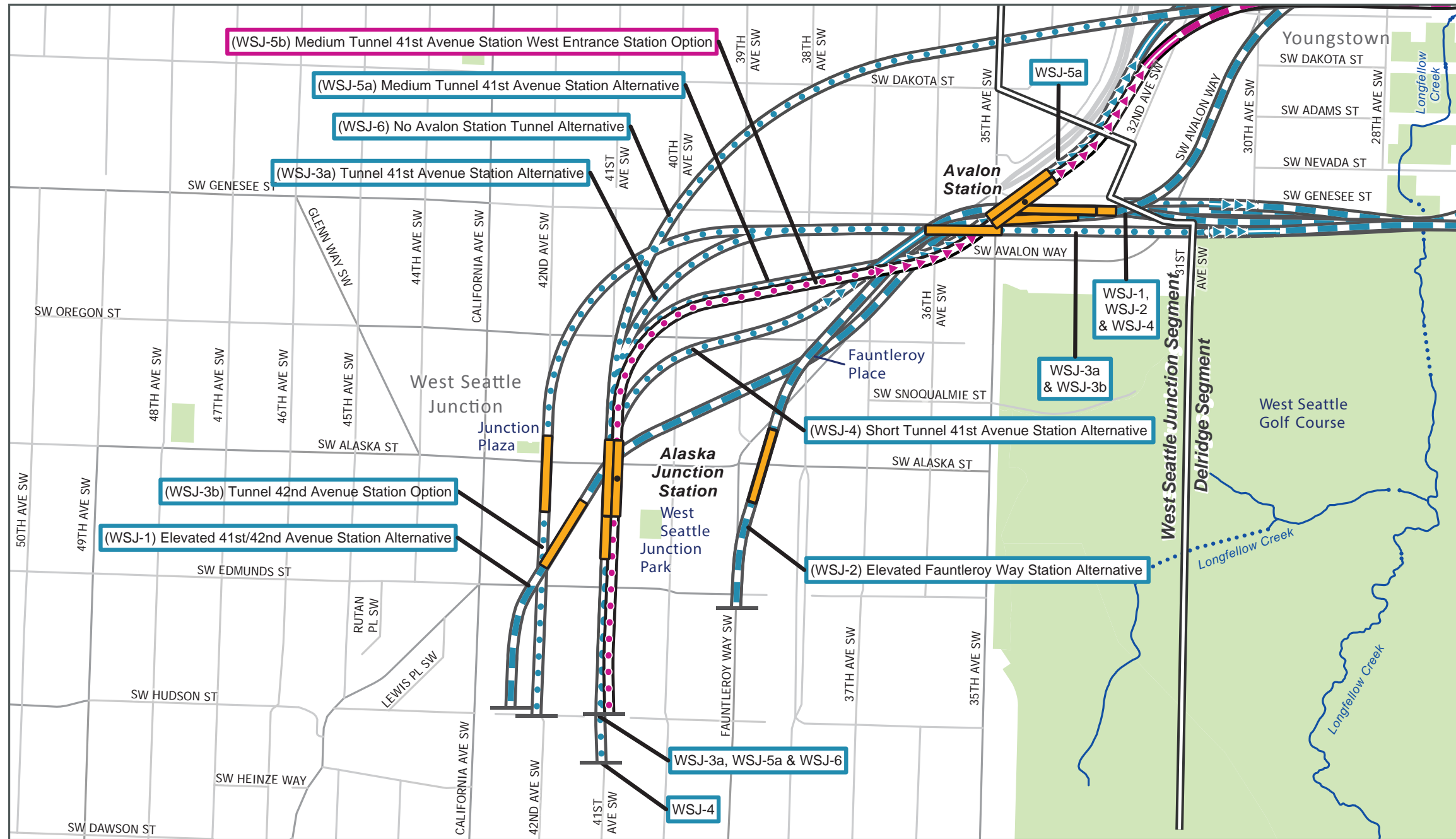
Delridge segment alternatives



Preferred Alternative		Other Alternatives		Station (● Indicates Preferred Alternative)	— Stream
Elevated	Tunnel	Elevated	Tunnel	New	Piped Stream
At-Grade	Retained Cut	At-Grade	Retained Cut	Segment Line	Park
				Railroad	



West Seattle Junction segment alternatives





Contact us

westseattlelink@soundtransit.org

206-903-7229

soundtransit.org/wslink-design



傳譯員 Interpreter

800-823-9230

Español 漢語 한국어 日本語
Tagalog русский язык Tiếng Việt

401 S. Jackson St., Seattle, WA 98104 | 800-201-4900 / TTY: 711
main@soundtransit.org | soundtransit.org

Information in alternative formats: 800-201-4900 / TTY: 711 | accessibility@soundtransit.org