

Presentation on Asset Management Community Oversight Panel

11 Oct 2023

Introductions

- *Vivian dela Rosa, Director - Enterprise Asset Management*
- *Vivian Wei, Deputy Director - Operations Asset Planning*
- *Stephanie Ratko, Director- Business Transformation*

AGENDA

The following agenda items were taken from the questions gathered from the COP regarding Asset Management:

- Update on the Tacoma Link Asset Management Plan from 2022 to present
- Update on the Procurement of the New Asset Management System
- Action Plan from the Old Asset Management System to the New System
- Present Inspection and Condition Assessments of Current Assets
- Discuss Contracted and Internal Work: Asset Management Program
- Discuss Sound Transit Learnings on Asset Management

Modal Asset Management Plan for Tacoma Link (T-Link)

Continuity from Dec 2022 Presentation

Discussed development and strategies:

- Overview of the mode and the primary systems within (e.g., fleet, guideway, support equipment)
- Information about the systems (e.g., # of vehicles in the fleet, age, condition, etc.)
- Level(s) of Service
- Performance measures
- Risks & opportunities (i.e., what could prevent us from delivering expected level(s) of service?)
- Overall strategies for delivering expected level(s) of service
- Expenditure plan (i.e., programs/projects needed to deliver expected level(s) of service)
- Continual improvement

To
2023

Current State - 2023

~ 40% completed and should be finalized by Q1 2024

- In 2023, Sound Transit started the development of the Modal Asset Management Plan for Tacoma Link
- Develop approach to managing assets from acquisition to disposal
- Align asset management activities to organizational goals (i.e., How does the work conducted on Tacoma Link assets support broader organizational goals?)
- Conduct risk assessment workshops to identify risks and develop mitigation plans

Update on the Procurement of New Asset Management System

In 2023...

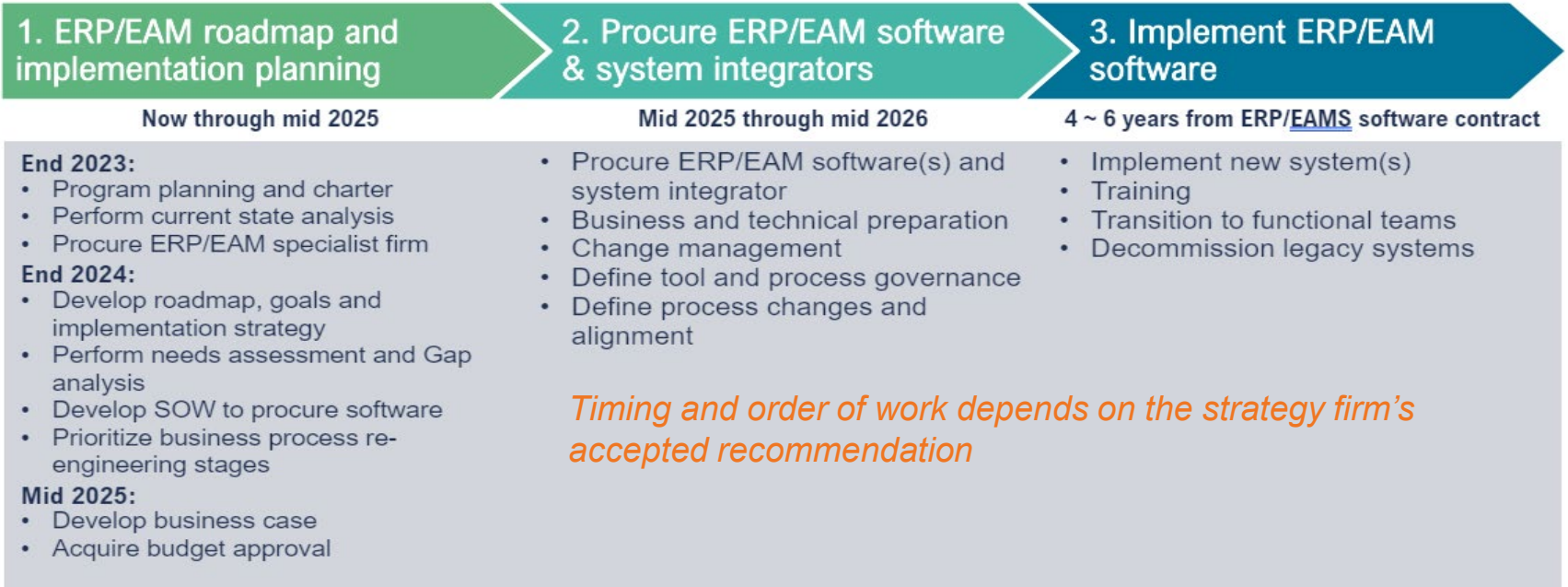
- Sound Transit established the ERP/EAM Transformation Program to plan the replacement of our Enterprise Resource Planning System (ERP - Enterprise 1) and our Enterprise Asset Management System (EAMS - Trapeze)

These systems are used to support our core financial processes such as:

- budget
- accounts payable, accounts receivable,
- grants, procurement, contracts,
- property management,
- asset management, asset maintenance, and asset management work

Update on the Procurement of New Asset Management System

Program and Phased Approach



Update on the Procurement of New Asset Management System

Request for Proposal (RFP) for Enterprise Resource Planning (ERP) and Enterprise Asset Management (EAM) Systems

- Sound Transit is in the process of requesting for proposals for strategy and planning consulting services to support the replacement of the ERP and EAM Systems
- Replacement will include the integrations between the EAM and ERP systems, as well as the integrations between them and other related systems
- The RFP was posted on 7 Sep 2023

Transition of Old Asset Management System to the New System

Action Plan

Sound Transit recognizes the importance of preserving historical asset data, complying with records retention requirements, and managing valuable asset information stored in the current system.

Therefore, we will **develop a comprehensive data migration plan** that outlines how we will handle this data during the migration to the new asset management system when that procurement is executed.

Inspection and Condition Assessment of Assets

The next slides will discuss the condition assessment approach for the following assets (high-level):

- Track
- Bridge and Tunnel
- Facility
- Systems

Condition Assessments

Track

Rail transit track inspections and rail transit structure inspections are performed per American Public Transportation Association (APTA) standards:

- Track walk or hi-rail inspection of all track components- weekly
- Geometry car inspection track- annually
- Rail grinding - annually (annual rail grinding program)
- Ultrasonic Rail Flaw Detection- annually
- Eddy Current Detection- annually & as needed for verification of possible defects
- Switch Inspections- monthly

Condition assessments


Bridge and Tunnel

Federal Highway Administration (FHWA) inspections cover the construction, maintenance, and preservation of bridges and tunnels, which are required every two years. Currently we also use Bridgeworks (WSDOT System) to help track and report on inspections

- Inspection of tunnel structure and component- biennial
- Tunnels and underground section follows National Tunnel Inspection Standards (NTIS); Tunnel Operations, Maintenance, Inspections, and Evaluation Manual (TOMIE); APTA Standard for Rail Transit Structure Inspection and Maintenance
- Inspection of aerial structure and components- biennial
- Bridge inspection follows Washington State Bridge Inspection Manual (WSBIM); Bridge Inspector's Reference Manual (BIRM)

Bridge and Tunnel Condition and Defects Database

Map Reports
🔖 🗨️ ⬆️ ⬇️ ?



Asset Inventory Dashboard

Filters

Clear all slicers

60.68K
Quality

48
Inspections

CS1 - Good Condition
Inspection Condition

System

 Angle Lake Link
 Central Link
 Northgate Link

Facility Type

 At-grade
 Bridge
 Tunnel

Asset List

AssetName

- (Blank)
- C17-At-grade-Ramp-010
- C17-At-grade-Ramp-020
- C23-Bridge-Span-001
- C23-Bridge-Span-002
- C23-Bridge-Span-003
- C23-Bridge-Span-004
- C23-Bridge-Span-005
- C23-Bridge-Span-006
- C23-Bridge-Span-007
- C23-Bridge-Span-008
- C23-Bridge-Span-009
- C23-Bridge-Span-010
- C30-At-grade-Section-0...
- C30-At-grade-Section-0...

Asset Health

STUniqueID	CONDITION STATE-01.01	CONDITION DESCRIPTION-01.01
N10-Bridge-Bent-001	CS1 - Good Condition	Minor debris
N10-Bridge-Bent-001	CS1 - Good Condition	
N10-Bridge-Bent-006	CS1 - Good Condition	1 diagonal crack on north face, from bottom of cap upward toward joint. Located approx 6-8 ft from inside column face
N10-Bridge-Bent-007	CS1 - Good Condition	
N10-Bridge-Bent-008	CS1 - Good Condition	Debris build up in joint
N10-Bridge-Bent-009	CS1 - Good Condition	
N10-Bridge-Bent-010	CS1 - Good Condition	
N10-Bridge-Bent-011	CS1 - Good Condition	Minor crack along south face about mid depth. Between girders

Construction Contract


 C700 - IDS - OMF
 C710 - Beacon Hill - Mt. Baker
 C755 - Aerial from Norfolk St. to TIBS
 N125 - UW Station to Maple Leaf Por...
 N160 - Aerial from MLP to Northgate
 S440 - Airport to Angle Lake

Facility Id

 C01 - Convention Place Facility
 C02 - Westlake to Convention Place
 C04 - Westlake to University Street
 C06 - University Street to Pioneer Sq...
 C08 - Pioneer Square to International

Asset Locator

C17-At-grade-Ramp-010		C17-
Year Opened		
Asset Type	At-Grade	At-G
Owner	Sound Transit	Soun
Construction Contract	C700 - IDS - OMF	C700
Size Description		
Units	LF	LF
Quantity		0.00



ST Dashboard
Full Asset List
Misc

Condition Assessments

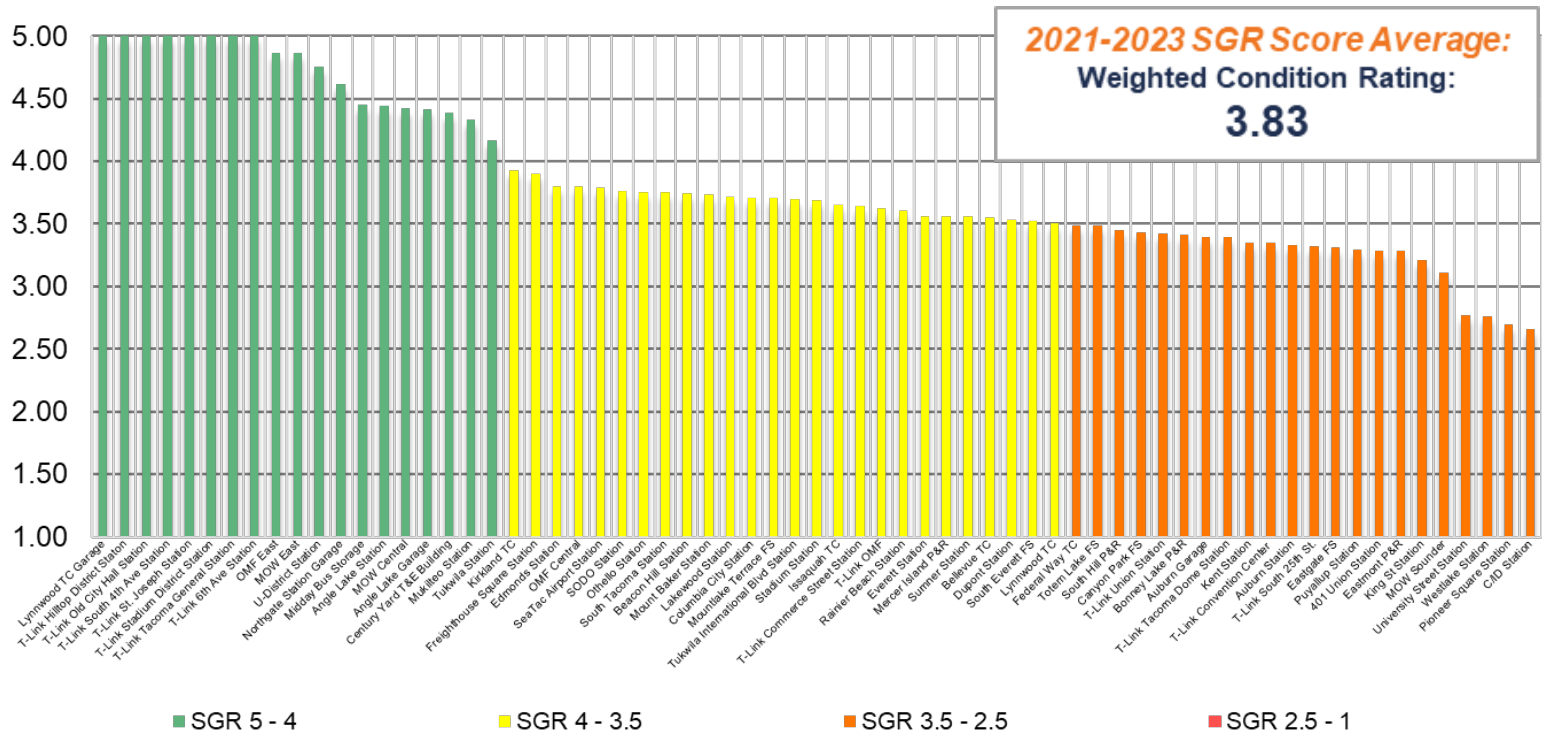
Facility

- Visual assessment monthly, quarterly and annual inspections by Facilities team
- Triennial Facility condition assessment (covering all major systems and sub-systems) by Operations Asset Planning

Systems

- Operations is working on getting a new system in place to better record height, stagger, and wire wear for the Overhead Catenary System (OCS) which directly supports OCS asset condition assessment by 2023 to 2024, depending on procurement and vendor availability

Facility Condition Score Heat Map: All Facilities 2021-2023



Facility Condition Rating by Asset

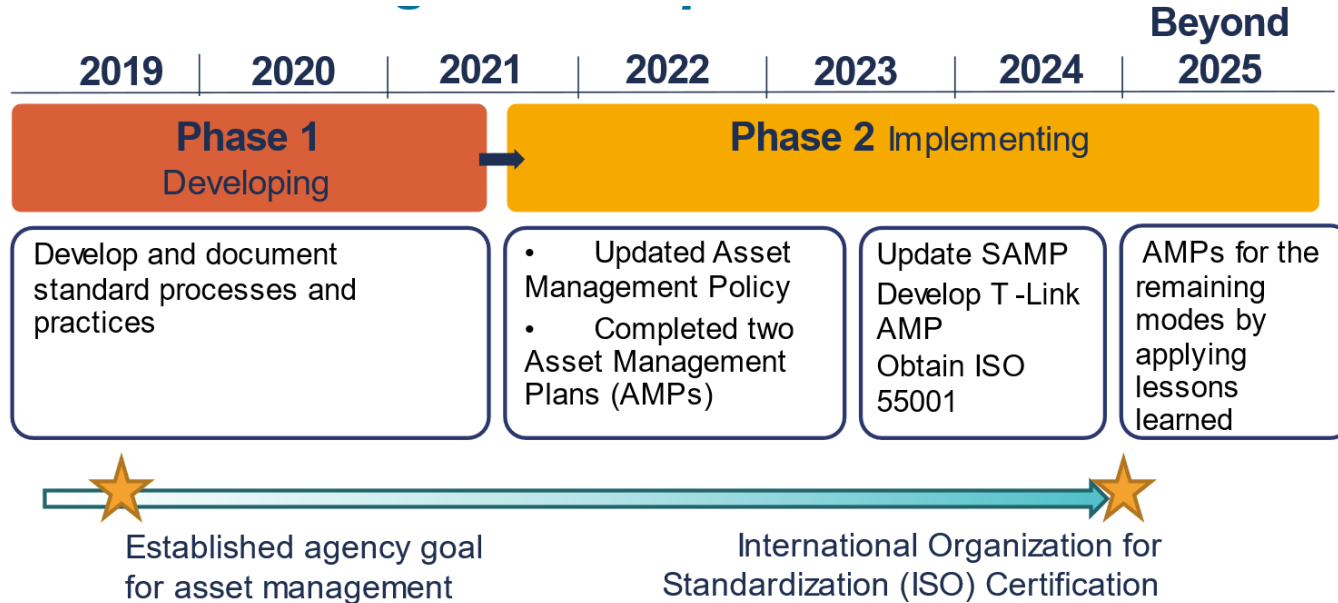
Element	Sub-Category	Element	Average Condition	Observation Count	Excellent	Good	Adequate	Marginal	Poor	
Capitol Hill Station	Substructure	Foundations	4.8	5	100%	0%	0%	0%	0%	
		Subgrade Enclosures	4.8	5	80%	20%	0%	0%	0%	
	Shell	Slabs-on-Grade	4.8	4	100%	0%	0%	0%	0%	
		Superstructure	4.8	16	88%	13%	0%	0%	0%	
		Exterior	4.6	19	79%	21%	0%	0%	0%	
		Exterior Horizontal Enclosures	4.5	22	41%	59%	0%	0%	0%	
	Interior	Interior Construction	4.5	29	69%	31%	0%	0%	0%	
		Interior Finishes	4.0	21	38%	14%	48%	0%	0%	
	Conveying	Conveying	4.4	12	0%	100%	0%	0%	0%	
	Plumbing	Plumbing	4.4	11	45%	55%	0%	0%	0%	
	Heating, Ventilation, and Air Conditioning	Heating, Ventilation, and Air Conditioning (HVAC)	4.1	4	25%	50%	25%	0%	0%	
	Fire Protection	Fire Protection	4.3	7	43%	43%	14%	0%	0%	
	Electrical	Electrical	4.3	7	43%	43%	14%	0%	0%	
	Communication	Communication	4.0	3	0%	100%	0%	0%	0%	
	Safety & Security Communication	Safety & Security Communication	4.0	4	0%	100%	0%	0%	0%	
	Integrated Automation	Integrated Automation	4.3	6	50%	50%	0%	0%	0%	
	Sitework	Site Preparation	4.3	16	56%	38%	6%	0%	0%	
		Liquid and Gas Site Utilities	4.6	8	88%	13%	0%	0%	0%	
	Columbia City Station	Substructure	Electrical Site Improvements	4.8	1	100%	0%	0%	0%	0%
			TUNNEL STATION	4.9	2	100%	0%	0%	0%	0%
		Shell	Foundations	4.5	13	100%	0%	0%	0%	0%
			Slabs-on-Grade	4.5	3	100%	0%	0%	0%	0%
			Superstructure	4.3	9	0%	100%	0%	0%	0%
		Exterior	Exterior	4.1	17	47%	0%	53%	0%	0%
			Exterior Horizontal Enclosures	4.0	18	50%	11%	39%	0%	0%
		Electrical	Electrical	3.6	12	0%	33%	67%	0%	0%
		Communication	Communication	3.1	2	0%	0%	100%	0%	0%
		Safety & Security Communication	Safety & Security Communication	3.1	2	0%	0%	100%	0%	0%
		Sitework	Site Preparation	3.7	85	9%	22%	68%	0%	0%
			Liquid and Gas Site Utilities	4.0	16	6%	38%	56%	0%	0%
			Electrical Site Improvements	4.3	2	0%	100%	0%	0%	0%
			Foundations	3.7	8	0%	0%	100%	0%	0%
International District Station (DSTT)		Substructure	Subgrade Enclosures	3.7	2	0%	0%	50%	50%	0%
			Slabs-on-Grade	3.7	2	0%	0%	100%	0%	0%
			Water and Gas Mitigation	3.3	2	0%	0%	0%	100%	0%
			Superstructure	3.5	12	0%	0%	83%	17%	0%
		Shell	Exterior	2.8	23	0%	0%	35%	43%	22%
			Exterior Horizontal Enclosures	2.5	6	0%	0%	33%	67%	0%
			Interior Construction	3.1	20	0%	0%	75%	25%	0%
		Interior	Interior Finishes	2.8	12	0%	0%	58%	25%	17%
			Conveying	2.7	10	0%	0%	0%	20%	80%
		Plumbing	Plumbing	2.8	20	0%	0%	25%	55%	20%
		Heating, Ventilation, and Air Conditioning	Heating, Ventilation, and Air Conditioning (HVAC)	1.7	13	0%	0%	0%	38%	62%
		Fire Protection	Fire Protection	2.8	12	17%	0%	33%	42%	8%
		Electrical	Electrical	2.6	18	0%	6%	72%	17%	4%
		Communication	Communication	2.6	4	0%	0%	75%	0%	25%
		Safety & Security Communication	Safety & Security Communication	3.0	4	0%	0%	75%	25%	0%
		Integrated Automation	Integrated Automation	3.3	4	0%	0%	100%	0%	0%
		Sitework	Site Preparation	2.9	23	0%	0%	61%	30%	9%
			Liquid and Gas Site Utilities	3.1	12	0%	0%	33%	67%	0%
	Electrical Site Improvements		3.1	1	0%	0%	0%	100%	0%	

Asset Management at Sound Transit

- The Enterprise Asset Management (EAM) Team consists of four full time employees and supported by one on-call consultant contract for International Organization for Standardization (ISO) 55001 certification support
- After obtaining the ISO certification for Tacoma Link, the EAM Team will primarily use the in-house resources to carry out the asset management functions and activities
- The EAM Team works closely with Operations Asset Planning Team

Asset Management at Sound Transit

Timeline



Sound Transit Continuously Learns

On Asset Management Systems

- Sound Transit continues to learn from organizations across various industries, to improve its overall asset management program and development of its asset management system
- Learning through networking and active participation in various associations such as- Institute of Asset Management, Asset Management Council, and Asset Leadership Network
- Sound Transit is currently working with an asset management consulting firm to help with the development of its asset management system
- Some staff members are active participants in technical committees and professional organizations focused on asset management, development of standards

OPEN DISCUSSION
THANK YOU FOR YOUR TIME