

# *East Link Starter Line*

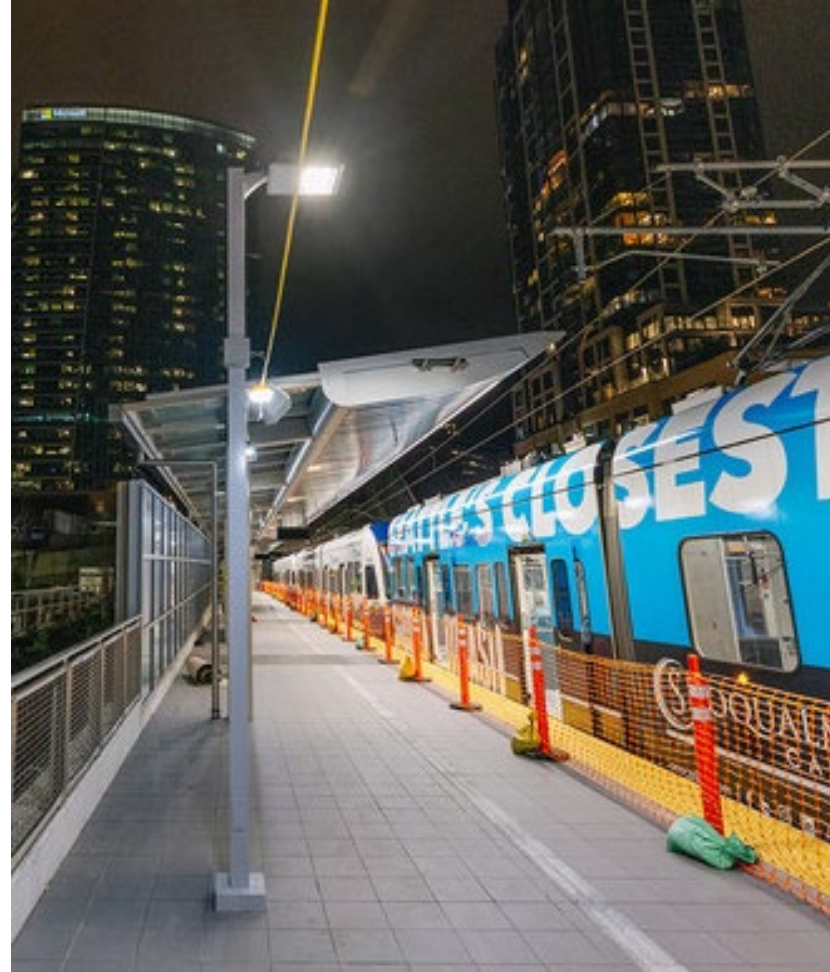
*Community Oversight Panel*

*8/9/2023*



# *Why we are here*

- Briefing today in advance of Board actions at August SEC and full Board meetings
- Progress on the East Link Starter Line and other openings in 2024



- Link light rail
- Lynnwood–Angle Lake
- Redmond Technology–South Bellevue
- Tacoma Dome–St Joseph
- Sounder trains
- Everett–Seattle
- Lakewood–Seattle
- ST Express buses
- Current routes



# System overview

**1** Line to Lynnwood (LLE)

**2** Line Eastside (ELSL)

★ Operations & Maintenance Facilities (OMFs) in Sodo and Bellevue; Maintenance of Way (MOW) facility in North Seattle

- LLE is on schedule to open with service constraints in Fall 2024.
- ELSL could be open with service constraints in Spring 2024 pending Board approval later this year.

# Project Sequencing 2024-2026

Recommended sequence of project openings:



*Note: Available service-ready vehicles will limit service levels and size of available train sets on all extension openings regardless of project sequencing until ELE I90 is open and vehicles can access both OMF Central and OMF East*

# *Considerations for Sequence of Openings*

## *Benefits*

- Maximizes aligning opening dates with partner agencies' bus service changes and union selections
- Creates cadence of project openings to build staffing capacity, experience, and process improvements
- Puts ELSL assets into service sooner to maximize warranty periods and begin daily maintenance for passenger service

## *Risks*

- Federal and state review requires resources outside ST control
- Vehicle and staffing resources will remain closely monitored to ensure adequate resources in time for pre-revenue service and opening
- Sufficient resources needed to ensure all work is complete and ready for safe and reliable openings

# East Link Starter Line Readiness

## Infrastructure

- On track to complete construction and testing on schedule

## Vehicles

- 23 vehicles needed and available for revenue service and spare ratio
- Enough storage space available at OMF East

## Resourcing

- Hiring status as of 07/21/2023:

Total positions	82% filled of ~180 target; trending up	Critical positions	82% filled of ~90 needed
-----------------	--	--------------------	--------------------------

- Confidence level of filling the rest: high

# ***East Link Starter Line Readiness***

## ***Proposed Initial Service Level***

- 16 hours/day, 10-minute peak and off-peak headways, 2-car train sets

## ***Anticipated Ridership***

- At 16 hours/day, approximately 6,000+ average weekday boardings

## ***Financial and Systemwide Impacts***

- No projected cost increase associated with opening the ELSL in March 2024
- If ELSL opens in March 2024, no projected impact on other projects

# Lynnwood Link Extension Readiness

## Infrastructure

- On track to complete construction and testing on schedule

## Vehicles

- 99 vehicles available for revenue service (79 + 20% spare ratio)
- Limited storage space available at OMF Central and/or on the 1 Line mainline (additional space needed for retrofits and commissioning new vehicles)

## Resourcing

- Hiring status as of 07/21/2023:

Total positions	70% filled of ~130 needed for LLE; trending up	Critical positions	66% filled of ~85 needed
-----------------	--	--------------------	--------------------------

- Confidence level of filling the rest by opening day: medium



# ***Lynnwood Link Extension Readiness***

## ***Proposed Initial Service Level***

- 20 hours/day, 8- to 9-minute peak headways with 10- and 15-minute off-peak headways, 50/50 combination of 3- and 4-car train sets (*analysis still underway to confirm*)

## ***Anticipated Ridership***

- 100,000-136,000 average weekday boardings on 1 Line; 25,300-34,200 for Lynnwood City Center to Northgate segment

## ***Financial and Systemwide Impacts***

- No projected cost increase associated with opening LLE in Fall 2024
- The LLE opening in Fall 2024 is not expected to have any impact on the projects in construction according to the planned sequence

# ***Work Beyond Construction***

## ***Focus on safety, reliability, and passenger needs***

### ***Activities before opening***

- Operator training & certification
- Simulated service & system validation
- Safety, ridership development, and community readiness communications
- General Transit Feed Specification updates
- Operational trials & simulations
- Safety certification
- Transition care and custody of assets

### ***Activities after opening***

- Adjust rider information to address newly identified passenger needs
- Daily monitoring and adjustments to the Standard Operating Procedures, Standard Maintenance Procedures
- Daily monitoring and adjustments to the technology systems that support daily operations

# Pathway to Board Approval



*Thank you.*



 [soundtransit.org](https://www.soundtransit.org)

