



East Link Starter Line

com Community Oversight Panel February 12, 2024



What we will cover:

What's Coming:

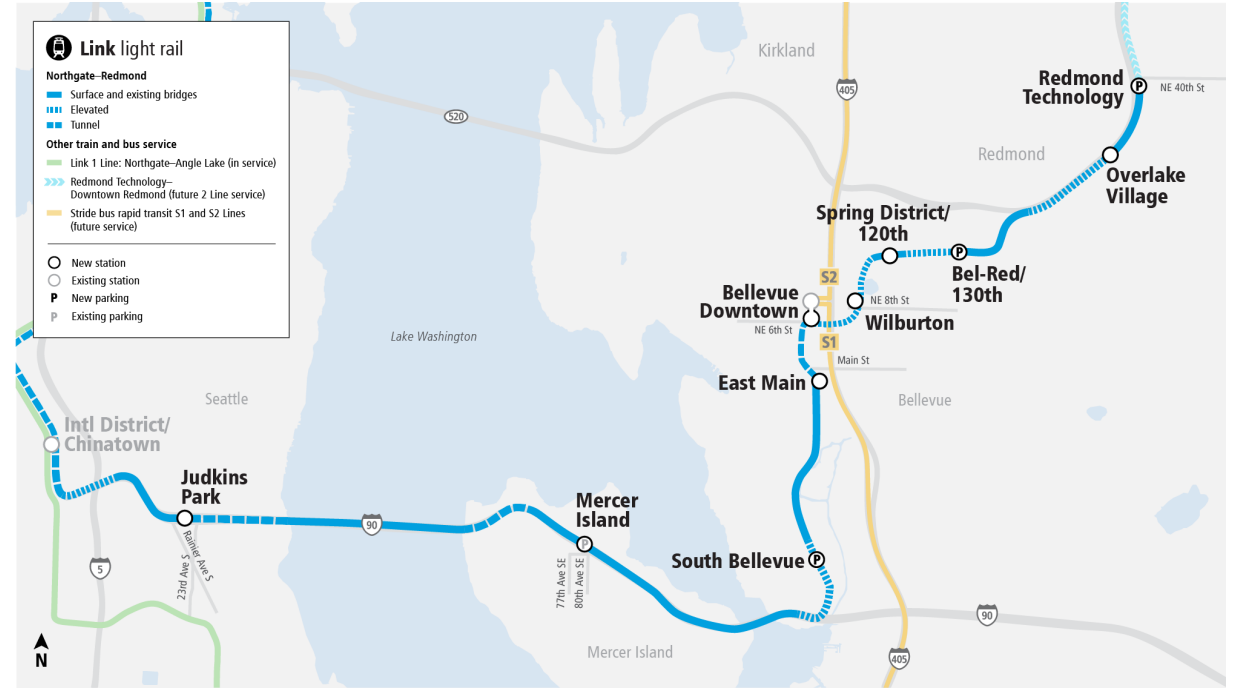
- East Link Starter Line & 2 Line
 - Stations
 - Systems Integration Testing
 - Pre-Revenue with Simulated Service
- I-90 Segment Status



East Link

Full Extension Plans:

- 14 miles, 10 stations
- 43,00-52,000 daily riders
- **Full Opening: 2025**



East Link Starter Line

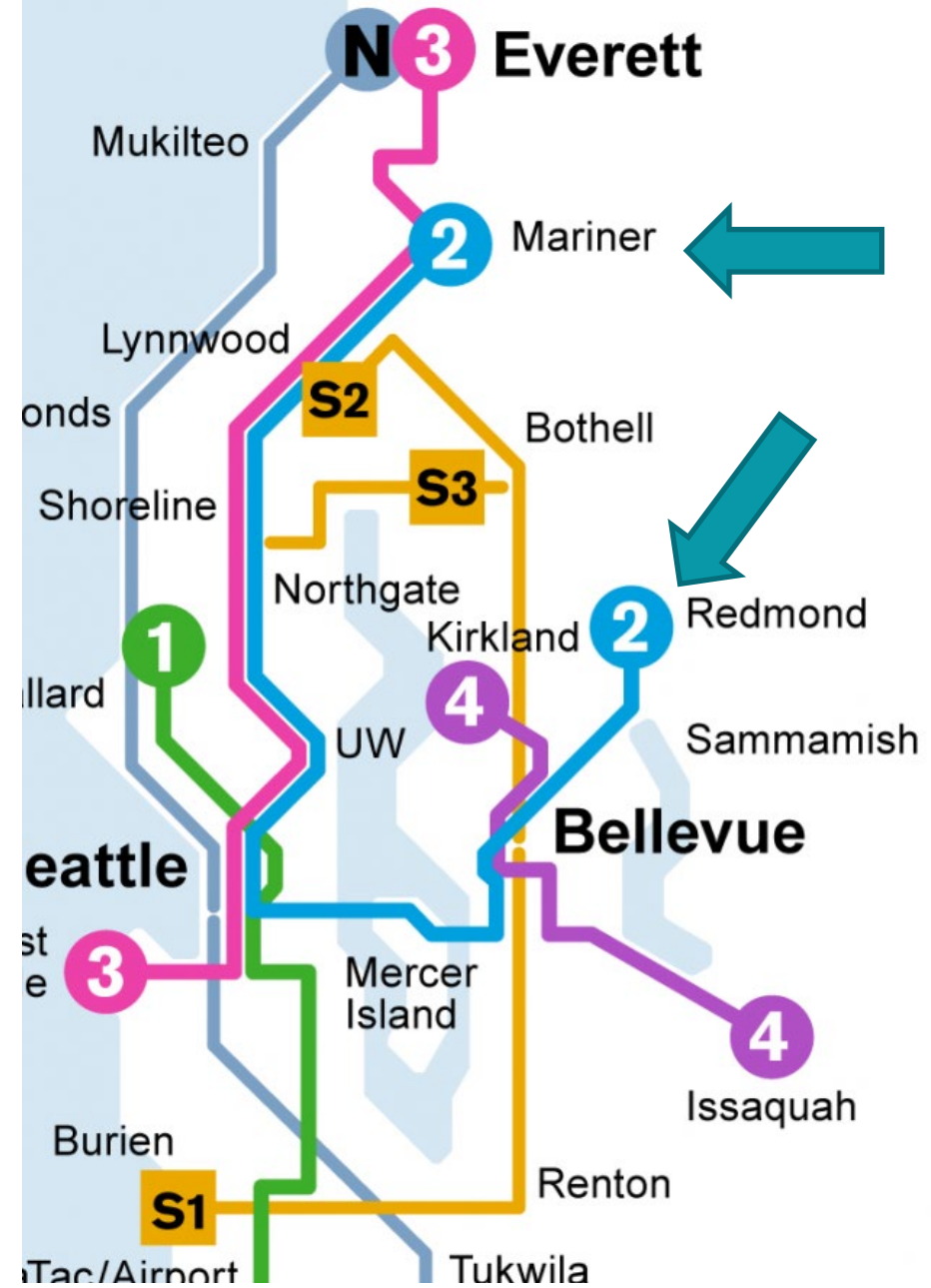


- 7 miles, 8 stations
- Board Approval of 2024 Service Plan
- **Opening: Spring 2024**

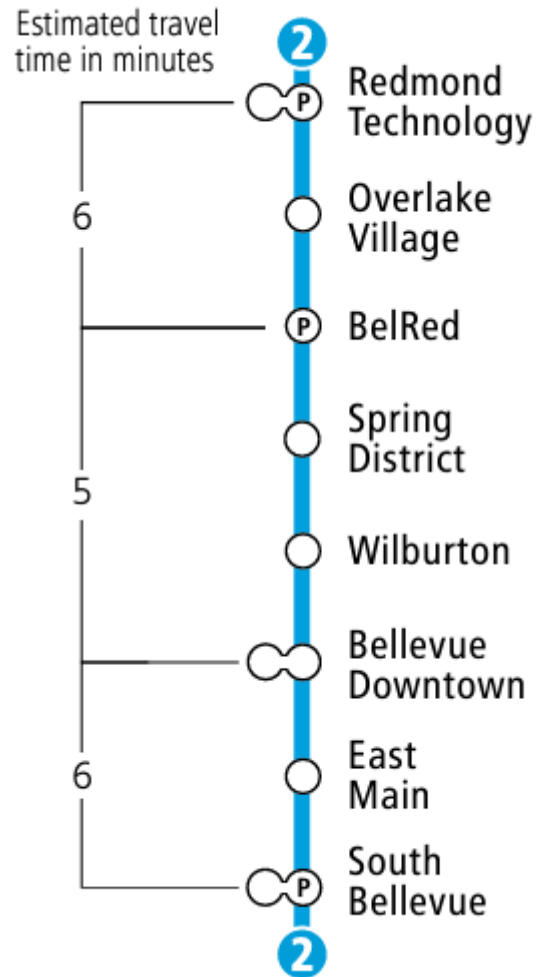
East Link is now 2 Line!

Switching our Vocabulary: East Link will be the 2 Line

- Overall operations and wayfinding
- East Link = project name
- 2 Line = rider experience

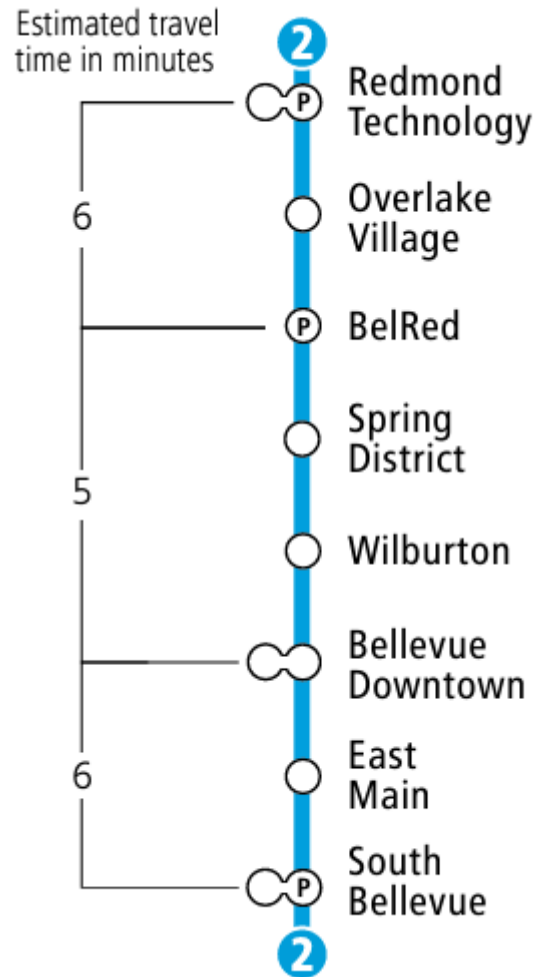


Benefits of opening the initial segment



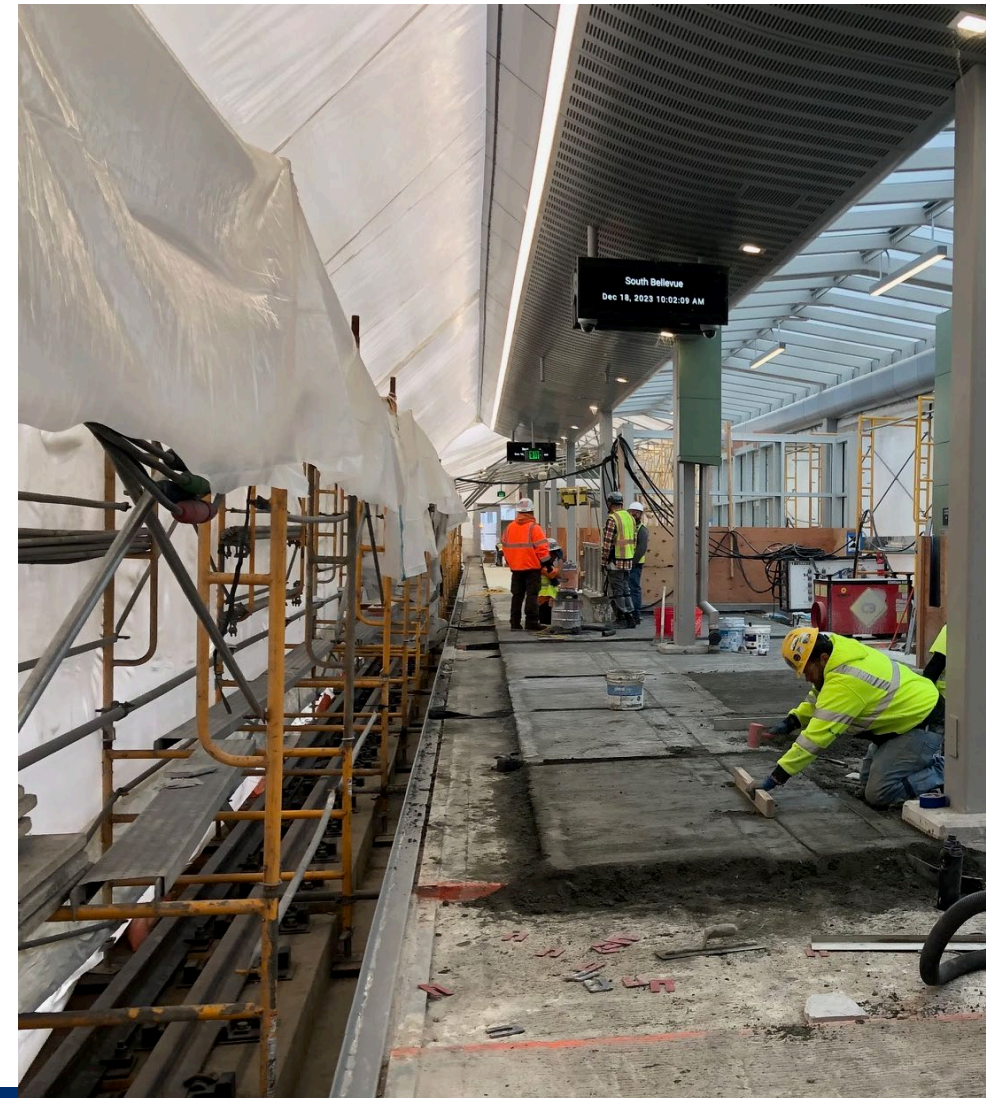
- Introduces light rail service to the Eastside
- Activates a 6.5-mile segment with 8 stations
- Chance to connect major Eastside destinations, including employment centers and neighborhoods

Operating hours and headways



- Link trains will arrive every 10 minutes
- Trains will operate from 5:30am to 9:30pm, 7 days a week
- Approximately 17 minutes from S. Bellevue to Redmond Technology Station
- 2 car trains
- All stations are ADA accessible

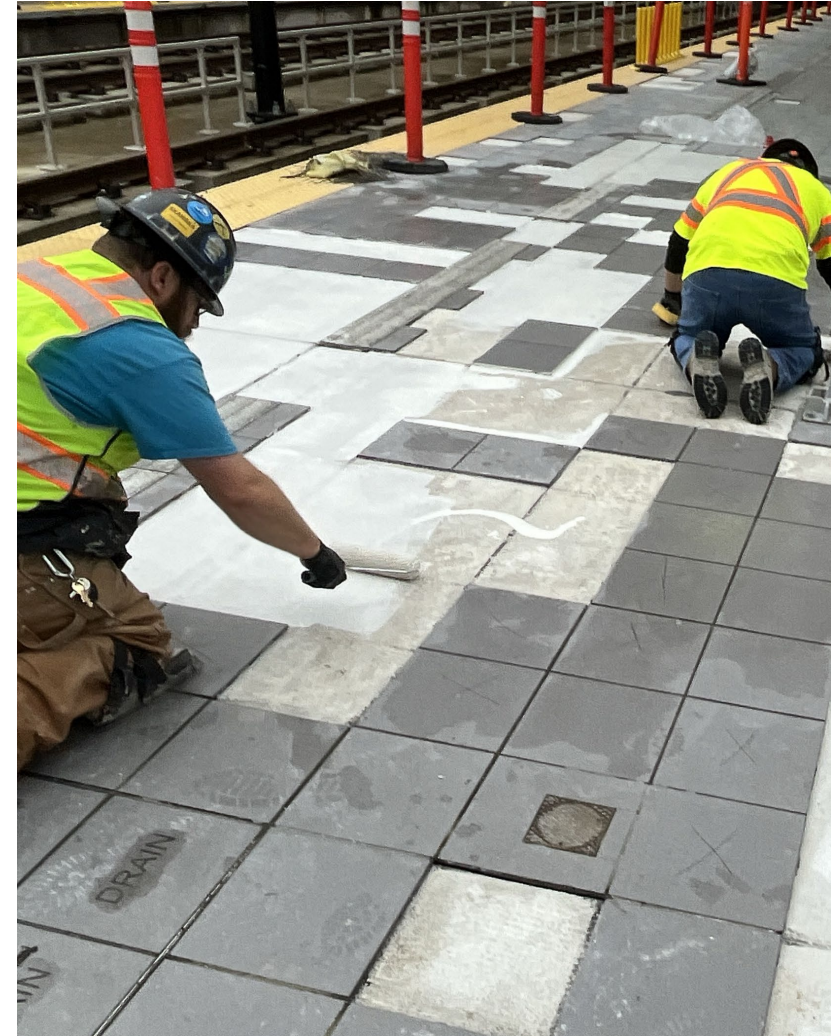
Wilburton



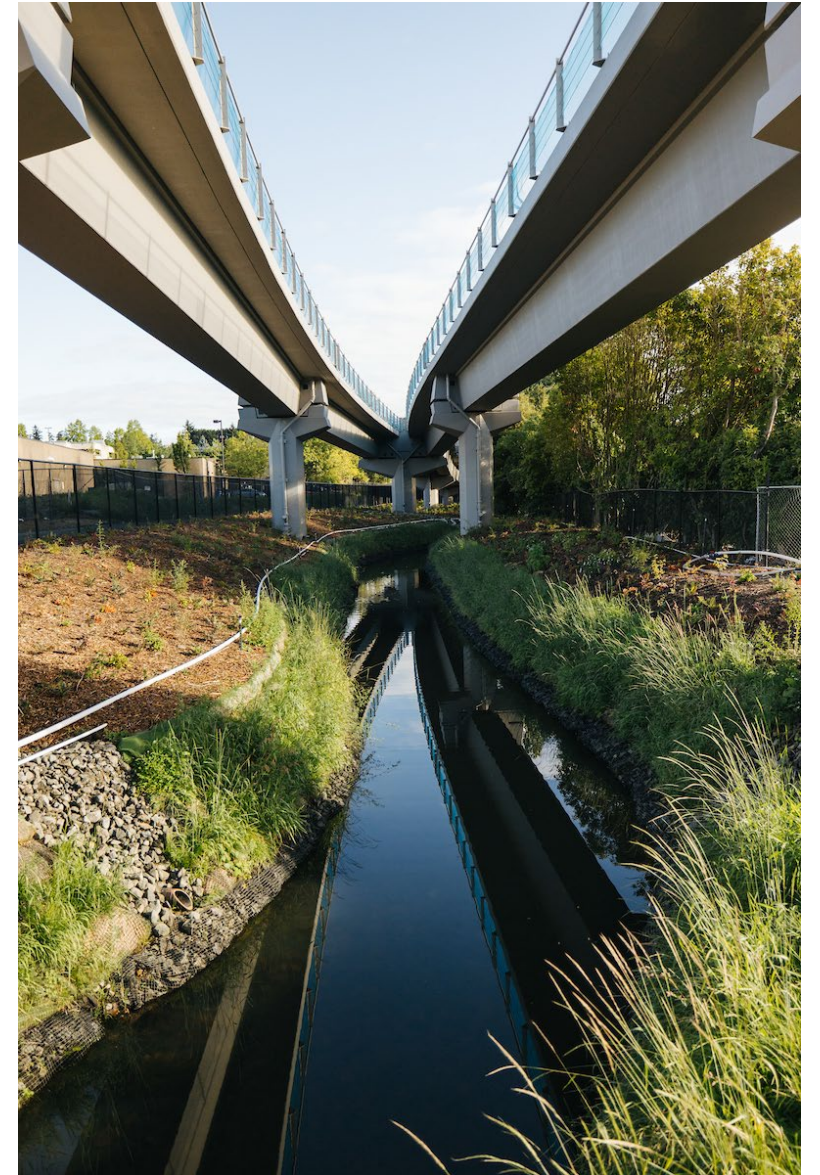
East Main



Downtown Bellevue



Wilburton



Spring District (120th)



BelRed



Overlake Village



Redmond Technology



System Integration Testing

Systems Integration Testing



Systems Integration Testing



Pre-Revenue with Simulated Service

CCD Open Items List

ITEM ID	Percentage of Completion	CRITICALITY	STATUS	CONTROL	ITEM NAME	ITEM DESCRIPTION	LOCATIONS AFFECTED	REQUIRED TO BE CLOSED BY	SINGLE POINT OF ACCOUNTABILITY	PROJECTED CLOSED DATE	COMMENTS/UPDATES	RAC Group	TASK SOURCE
8	70%	Urgent	ASSIGNED	MEDIUM RISK	Spring District Tile Issues	Platform Tiles are indoor tiles, and require replacement	Spring District Station	Revenue Service	Chad Brown	February 28	tile work trending well with high confidence of meeting schedule	PROJECT	ELSL Risk to Ops Log
9	80%	Urgent	ASSIGNED	HIGH RISK	Tile Repairs at other Stations	ORAT Reported other tile issues they observed during their inspection walk	Wilburton/Bellevue Downtown/East Main	Revenue Service	Chad Brown	March 05		PROJECT	ELSL Risk to Ops Log
10	80%	Urgent	ASSIGNED	MEDIUM RISK	South Bellevue Station Platform Tile replacement (Follow-on 1 contract)	Replacing the whole tile assembly and re-coating the edge angles. Will need to single track into station until tile work is complete and weather protection is removed. ST Ops has expressed concerns about single tracking during simulated service.	South Bellevue Station	Revenue Service	Chad Brown	March 05		PROJECT	ELSL Risk to Ops Log
11	65%	Severe	ASSIGNED	UNDER CONTROL	Fall protection Warranty Repair and schedule re-inspection	It was reported that we need an immediate warranty repair by the installer and then a re-inspection of the work by Gravtec	RTS Station	Revenue Service	Tracy Wyrlick	31-Mar	1/02 - Working with E360 contractor, Keiwit-Hoffman, as a warranty item. Low progress due to warranty review by contractor and subcontractor.	SYSTEMS	
14	85%	Severe	ASSIGNED	UNDER CONTROL	CCTV Performance Issues	There is currently an issue with the connectivity on a handful of cameras at Wilburton Station (6 cameras), Bel-Red Station (1 camera), and Overlake Village Station (14 cameras). Brent Lamoreaux is currently with Transit Systems to determine the issue and find a resolution. Being that we could not confirm all camera views and a reoccurring connectivity issue that requires investigation and a resolution.	Various Sites	Revenue Service	Gail Pereira	18-Jan		SYSTEMS	ELSL Risk to Ops Log
40	60%	Severe	ASSIGNED	MEDIUM RISK	SIT 506: Audio priority for LCC adhoc messages not interrupting normal messages.	South Bellevue Station Only. Wabtec/Fimo to investigate and resolve. High priority item. This is the backbone of what we test under SIT 506. Ad-hoc messages did not override normal messages. This prevented the testing from proceeding. Therefore, the entire test needs to be re-performed for message priorities. Sites and Speakers have been verified to work.	South Bellevue Station	Revenue Service	Francine Jimenez	14-Feb		SIT	SIT Closeout Memo
42	80%	Severe	ASSIGNED	UNDER CONTROL	SIT 506: PA Summary Alarm to BMS SCADA Not Tested	BMS updates from Wabtec/SCADA (SIT 505) to occur on 10/31. Testing will occur after these are implemented. Need to verify that Amplifier Fault, SCU Fault, Controller Fault, and Speaker Line Fault all roll into PA Summary Alarm on BMS SCADA. RESPONSIBLE: E750 (BNC)	ALL ELSL Stations	Revenue Service	Francine Jimenez	14-Feb	NEEDS TESTING- 01/02 The work was completed now it only needs testing- Marcus F12/21 Activation was informed that E750 Planned completion January 12 pending resource confirmation	SIT	SIT Closeout Memo
46	90%	Severe	ASSIGNED	UNDER CONTROL	SIT 506: SDS, BOS Sprinkler valve tamper switch supervisory signals unable to be tested	SIT 506: Sprinkler valve tamper switch supervisory signal unable to be tested due existing supervisory alarm on FACP. Both stations have supervisory signals for the clean agent system active on the FACP. These need to be cleared by E335 before the valve tamper switch supervisory signal to SCADA can be tested. RESPONSIBLE: E335 (Taylor Harper)	Spring District Station and Bellevue Downtown Station	Revenue Service	Bethanie Yaklin	14-Feb		SIT	SIT Closeout Memo

P6 Detailed Schedule

Print: 26-Jan-24 17:27 Contact: Michael Truman Updated: 01-Jan-24		ELSL - Simulated Service Detail				Project: East Link Starter Line Rail Activation Layout: ELSL - Pre-Revenue TASK filters: ELSL Pre-Rev, Finish after Current Date.																
Activity ID	Activity Name	RD	Start	Finish	Total Float	January 2024				February 2024					March 2024				April 2024			
						31	07	14	21	28	04	11	18	25	03	10	17	24	31	07		
Simulated Service - Week #5																						
PRV1230	Understand Operations with Rail Service Workers at #2	8	14-Feb-24	21-Feb-24	22																	
PRV1240	Station Announcement via PICS #2	7	14-Feb-24	20-Feb-24	23																	
PRV1410	Verify onboard train messaging #2	4	18-Feb-24	21-Feb-24	22																	
PRV1440	Simulate broken down train and recovery	4	18-Feb-24	21-Feb-24	22																	
PRV1470	Passenger Transfers	4	18-Feb-24	21-Feb-24	22																	
Simulated Service - Updated Detail from KCM																						
Week 1																						
ELSL11520	Uninterrupted Simulated Service	5	24-Jan-24	28-Jan-24	0																	
Week 2																						
ELSL11530	130th Single Tracking - 24E-01	1	29-Jan-24	29-Jan-24	0																	
ELSL11580	Kirkland Wye Single Tracking - 24E-09	1	30-Jan-24	30-Jan-24	0																	
ELSL11590	Bellevue Tunnel Fire Scenario (Not Disabled) - 24E-02	1	31-Jan-24	31-Jan-24	0																	
ELSL11620	Bellevue Tunnel Fire Scenario (Disabled) - 24E-05	1	01-Feb-24	01-Feb-24	0																	
ELSL11660	Disabled on the Elevated - 24E-06	1	02-Feb-24	02-Feb-24	0																	
ELSL11700	Redmond Technology Station Turnbacks - 24E-10	1	03-Feb-24	03-Feb-24	0																	
ELSL11760	South Bellevue Station Turnbacks - 24E-11	1	04-Feb-24	04-Feb-24	0																	
Week 3																						
ELSL11770	Kirkland Wye Signal House Failure - 24E-08	1	05-Feb-24	05-Feb-24	0																	
ELSL11810	Bellevue Tunnel Fire Scenario (ECVP Launch) - 24E-03	1	06-Feb-24	06-Feb-24	0																	
ELSL11840	Bellevue Tunnel Single Tracking - 24E-04	1	07-Feb-24	07-Feb-24	0																	
ELSL11880	Kirkland Wye Primary Track Blocked - 24E-07	1	08-Feb-24	08-Feb-24	0																	
ELSL11540	130th Single Tracking - 24E-01	1	09-Feb-24	09-Feb-24	0																	
ELSL11570	Kirkland Wye Single Tracking - 24E-09	1	10-Feb-24	10-Feb-24	0																	
ELSL11600	Bellevue Tunnel Fire Scenario (Not Disabled) - 24E-02	1	11-Feb-24	11-Feb-24	0																	
Week 4																						
ELSL11630	Bellevue Tunnel Fire Scenario (Disabled) - 24E-05	1	12-Feb-24	12-Feb-24	0																	
ELSL11670	Disabled on the Elevated - 24E-06	1	13-Feb-24	13-Feb-24	0																	
ELSL11710	Redmond Technology Station Turnbacks - 24E-10	1	14-Feb-24	14-Feb-24	0																	
ELSL11740	South Bellevue Station Turnbacks - 24E-11	1	15-Feb-24	15-Feb-24	0																	
ELSL11780	Kirkland Wye Signal House Failure - 24E-08	1	16-Feb-24	16-Feb-24	0																	
ELSL11820	Bellevue Tunnel Fire Scenario (ECVP Launch) - 24E-03	1	17-Feb-24	17-Feb-24	0																	
ELSL11850	Bellevue Tunnel Single Tracking - 24E-04	1	18-Feb-24	18-Feb-24	0																	
Week 5																						
ELSL11890	Kirkland Wye Primary Track Blocked - 24E-07	1	19-Feb-24	19-Feb-24	0																	
ELSL11550	130th Single Tracking - 24E-01	1	20-Feb-24	20-Feb-24	0																	
ELSL11555	ST Conveyance Outage Exercise	1	21-Feb-24	21-Feb-24	0																	

P6 Detailed Schedule

Print: 26-Jan-24 17:27 Contact: Michael Truman Updated: 01-Jan-24		ELSL - Simulated Service Detail				Project: East Link Starter Line Rail Activation Layout: ELSL - Pre-Revenue TASK filters: ELSL Pre-Rev, Finish after Current Date.														
Activity ID	Activity Name	RD	Start	Finish	Total Float	January 2024				February 2024					March 2024				April 2024	
						31	07	14	21	28	04	11	18	25	03	10	17	24	31	07
Simulated Service - Week #5																				
PRV1230	Understand Operations with Rail Service Workers at #2	8	14-Feb-24	21-Feb-24	22															
PRV1240	Station Announcement via PICS #2	7	14-Feb-24	20-Feb-24	23															
PRV1410	Verify onboard train messaging #2	4	18-Feb-24	21-Feb-24	22															
PRV1440	Simulate broken down train and recovery	4	18-Feb-24	21-Feb-24	22															
PRV1470	Passenger Transfers	4	18-Feb-24	21-Feb-24	22															
Simulated Service - Updated Detail from KCM																				
Week 1																				
ELSL11520	Uninterrupted Simulated Service	5	24-Jan-24	28-Jan-24	0															
Week 2																				
ELSL11530	130th Single Tracking - 24E-01	1	29-Jan-24	29-Jan-24	0															
ELSL11580	Kirkland Wye Single Tracking - 24E-09	1	30-Jan-24	30-Jan-24	0															
ELSL11590	Bellevue Tunnel Fire Scenario (Not Disabled) - 24E-02	1	31-Jan-24	31-Jan-24	0															
ELSL11620	Bellevue Tunnel Fire Scenario (Disabled) - 24E-05	1	01-Feb-24	01-Feb-24	0															
ELSL11660	Disabled on the Elevated - 24E-06	1	02-Feb-24	02-Feb-24	0															
ELSL11700	Redmond Technology Station Turnbacks - 24E-10	1	03-Feb-24	03-Feb-24	0															
ELSL11760	South Bellevue Station Turnbacks - 24E-11	1	04-Feb-24	04-Feb-24	0															
Week 3																				
ELSL11770	Kirkland Wye Signal House Failure - 24E-08	1	05-Feb-24	05-Feb-24	0															
ELSL11810	Bellevue Tunnel Fire Scenario (ECVP Launch) - 24E-03	1	06-Feb-24	06-Feb-24	0															
ELSL11840	Bellevue Tunnel Single Tracking - 24E-04	1	07-Feb-24	07-Feb-24	0															
ELSL11880	Kirkland Wye Primary Track Blocked - 24E-07	1	08-Feb-24	08-Feb-24	0															
ELSL11540	130th Single Tracking - 24E-01	1	09-Feb-24	09-Feb-24	0															
ELSL11570	Kirkland Wye Single Tracking - 24E-09	1	10-Feb-24	10-Feb-24	0															
ELSL11600	Bellevue Tunnel Fire Scenario (Not Disabled) - 24E-02	1	11-Feb-24	11-Feb-24	0															
Week 4																				
ELSL11630	Bellevue Tunnel Fire Scenario (Disabled) - 24E-05	1	12-Feb-24	12-Feb-24	0															
ELSL11670	Disabled on the Elevated - 24E-06	1	13-Feb-24	13-Feb-24	0															
ELSL11710	Redmond Technology Station Turnbacks - 24E-10	1	14-Feb-24	14-Feb-24	0															
ELSL11740	South Bellevue Station Turnbacks - 24E-11	1	15-Feb-24	15-Feb-24	0															
ELSL11780	Kirkland Wye Signal House Failure - 24E-08	1	16-Feb-24	16-Feb-24	0															
ELSL11820	Bellevue Tunnel Fire Scenario (ECVP Launch) - 24E-03	1	17-Feb-24	17-Feb-24	0															
ELSL11850	Bellevue Tunnel Single Tracking - 24E-04	1	18-Feb-24	18-Feb-24	0															
Week 5																				
ELSL11890	Kirkland Wye Primary Track Blocked - 24E-07	1	19-Feb-24	19-Feb-24	0															
ELSL11550	130th Single Tracking - 24E-01	1	20-Feb-24	20-Feb-24	0															
ELSL11555	ST Conveyance Outage Exercise	1	21-Feb-24	21-Feb-24	0															

I-90 Segment

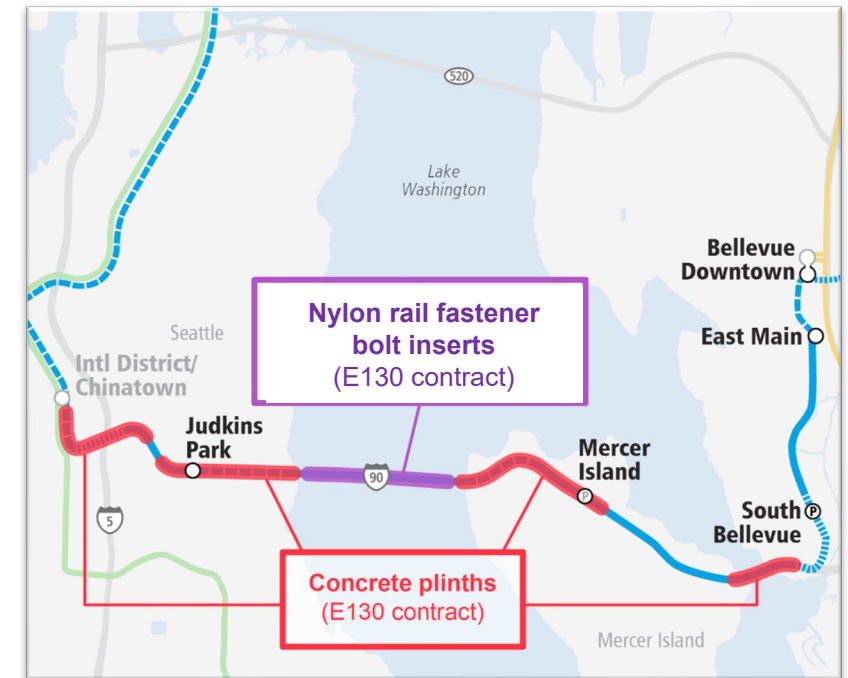
East Link (I-90 Corridor)

Plinth Rebuild Status

- Concrete track plinth demolition at 95% and reconstruction at 64% complete as of Jan.29,2024
- Forecasted track plinths completion slipped from April to July 2024 still within 2025 opening
- Nylon Insert replacement completed on floating bridge

Field Data Tracking						
	Date	2/2/2024				
Location	Sum of Total Track Feet	As-PLANNED - FIELD	% Complete PLANNED	As-Built	% Complete AS-BUILT	% Actual vs. Planned
IDS	767.47	4,306.00	60%	3,626.00	50%	84%
D2	7,196.11					
JPS	4,009.01	2,488.00	62%	2,181.00	54%	88%
MBT	7,029.08	7,906.50	112%	7,036.00	100%	89%
WA	4,722.28	766.00	16%	627.00	13%	82%
EA	4,630.87	1,205.00	26%	1,018.50	22%	85%
MIT	5,959.02	6,228.00	105%	5,601.50	94%	90%
MIS	2,159.72	2,592.50	120%	2,152.00	100%	83%
ECB	5,561.80	6,257.50	113%	5,566.50	100%	89%
Total	42,035.36	31,749.50	76%	27,808.50	66%	88%
	% (Actual VS Project Total)		66%			
	% (Actual VS Planned)		88%			

As of February 6, 2024



East Link (I-90 Corridor)

Project risks and mitigations

- Ongoing post-tension cable investigation at floating bridge approaches – 3 of 5 areas complete with no additional strengthening required.
- Completing Polyurea coating on floating bridge this summer.
- Completing power and systems tie-in work at International District / Chinatown Station to connect 1-Line with minimal disruptions to passengers.
- Commitment from contractor to staff and manage work to meet schedule.



Completed Track on East Channel Bridge Looking West

I-90 Plinth Reconstruction



Thank you.

Thank you.



 [soundtransit.org](https://www.soundtransit.org)

