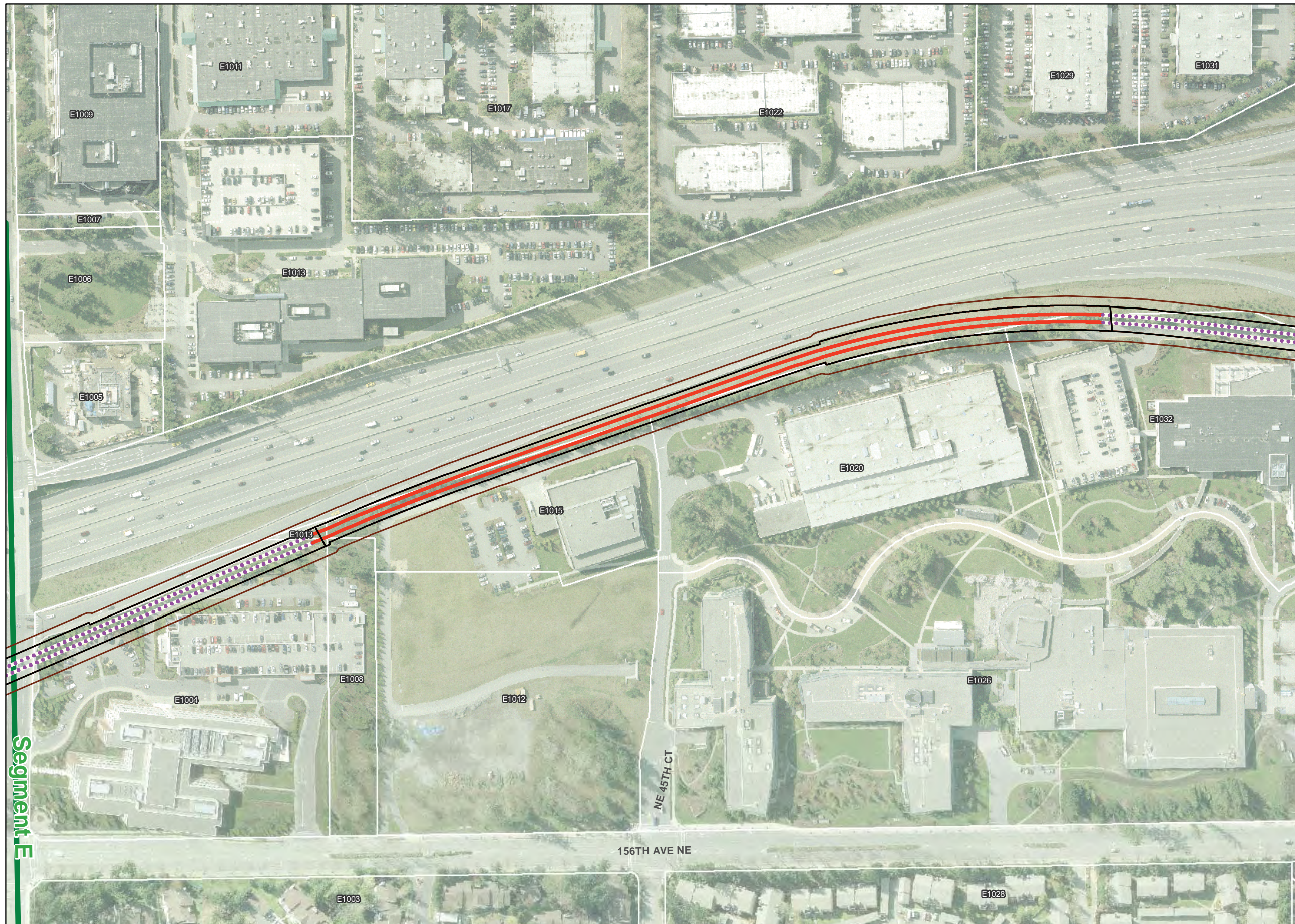
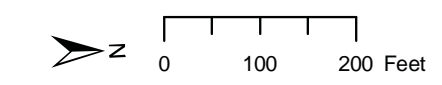


**Exhibit F-114**  
**Wetland, Wetland Buffer,**  
**and Wetland Mitigation**  
**Impacts**  
**Alternative E1**  
**Sheet 1**  
*East Link Project*



- At-Grade Route
- - - Elevated Route
- · · Retained-Cut Route
- - - Retained-Fill Route
- Tunnel Route
- Operational Footprint**
- ROW
- Park and Ride
- Construction Footprint**
- Construction Footprint
- Staging Area
- Station
- Maintenance Facility
- Wetland
- Wetland Buffer
- Wetland Mitigation Site (WSDOT)
- Operational Wetland Impact
- Construction Wetland Impact
- Operational Wetland Buffer Impact
- Construction Wetland Buffer Impact
- Wetland Mitigation Impact
- Stream Buffer
- Open Channel
- Piped Stream
- Parcel with MapID

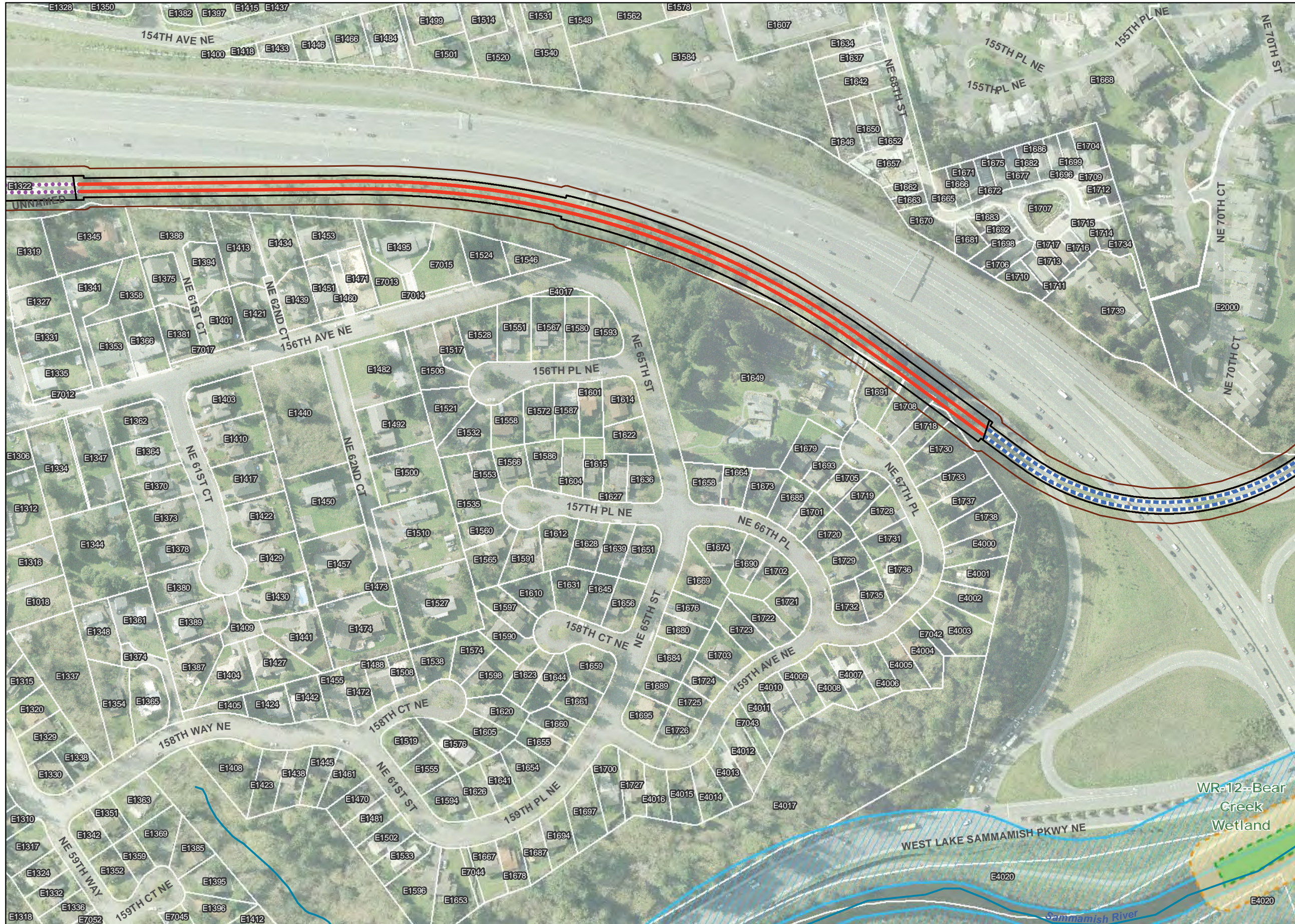
Aerial Photo: Sound Transit (2009)



Segment E

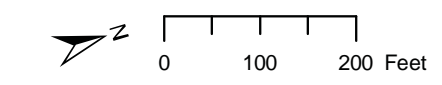


**Exhibit F-116**  
**Wetland, Wetland Buffer,**  
**and Wetland Mitigation**  
**Impacts**  
**Alternative E1**  
**Sheet 3**  
*East Link Project*



- At-Grade Route
- Elevated Route
- Retained-Cut Route
- Retained-Fill Route
- Tunnel Route
- Operational Footprint**
- ROW
- Park and Ride
- Construction Footprint**
- Construction Footprint
- Staging Area
- Station
- Maintenance Facility
- Wetland
- Wetland Buffer
- Wetland Mitigation Site (WSDOT)
- Operational Wetland Impact
- Construction Wetland Impact
- Operational Wetland Buffer Impact
- Construction Wetland Buffer Impact
- Wetland Mitigation Impact
- Stream Buffer
- Open Channel
- Piped Stream
- Parcel with MapID

Aerial Photo: Sound Transit (2009)

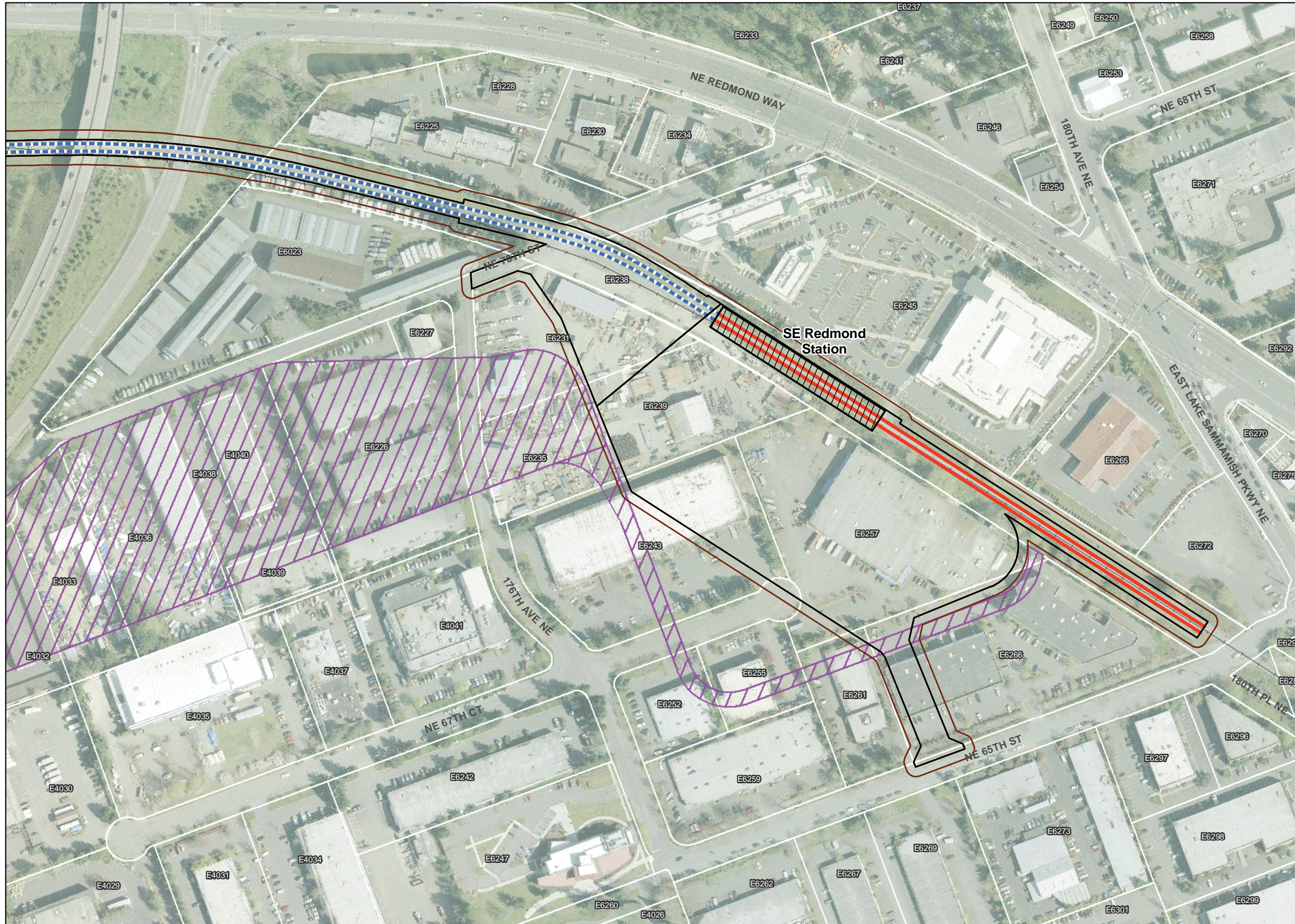






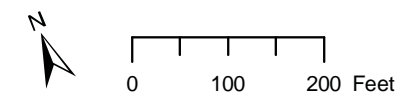


**Exhibit F-120**  
**Wetland, Wetland Buffer,**  
**and Wetland Mitigation**  
**Impacts**  
**Alternative E1**  
**Sheet 7**  
**East Link Project**

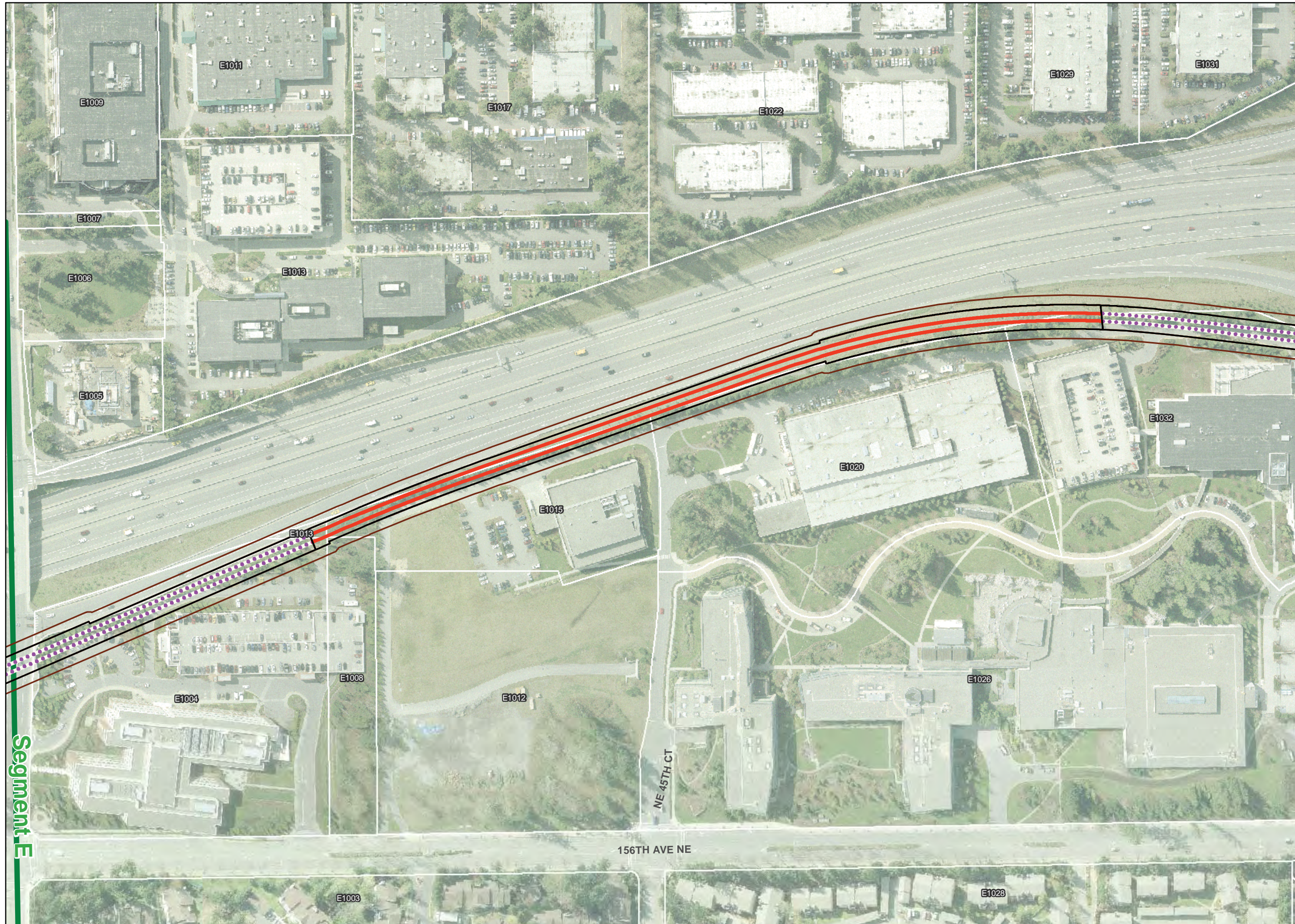


- At-Grade Route
- - - Elevated Route
- • • Retained-Cut Route
- • • Retained-Fill Route
- - - Tunnel Route
- Operational Footprint**
- ROW
- Park and Ride
- Construction Footprint**
- Construction Footprint
- Staging Area
- Station
- Maintenance Facility
- Wetland
- Wetland Buffer
- Wetland Mitigation Site (WSDOT)
- Operational Wetland Impact
- Construction Wetland Impact
- Operational Wetland Buffer Impact
- Construction Wetland Buffer Impact
- Wetland Mitigation Impact
- Stream Buffer
- Open Channel
- Piped Stream
- Parcel with MapID

Aerial Photo: Sound Transit (2009)

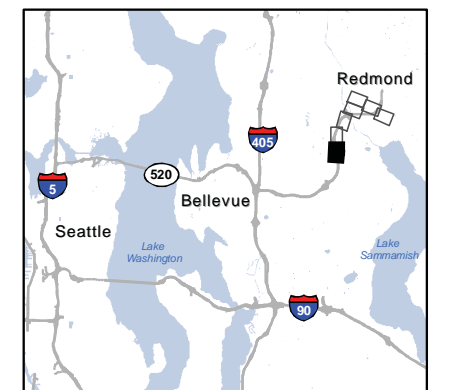
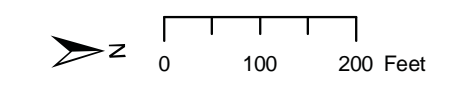


**Exhibit F-121**  
**Wetland, Wetland Buffer,**  
**and Wetland Mitigation**  
**Impacts**  
**Alternative E4**  
**Sheet 1**  
*East Link Project*



- At-Grade Route
- - - Elevated Route
- Retained-Cut Route
- Retained-Fill Route
- - - Tunnel Route
- Operational Footprint**
- ROW
- Park and Ride
- Construction Footprint**
- Construction Footprint
- Staging Area
- Station
- Maintenance Facility
- Wetland
- Wetland Buffer
- Wetland Mitigation Site (WSDOT)
- Operational Wetland Impact
- Construction Wetland Impact
- Operational Wetland Buffer Impact
- Construction Wetland Buffer Impact
- Wetland Mitigation Impact
- Stream Buffer
- Open Channel
- Piped Stream
- Parcel with MapID

Aerial Photo: Sound Transit (2009)

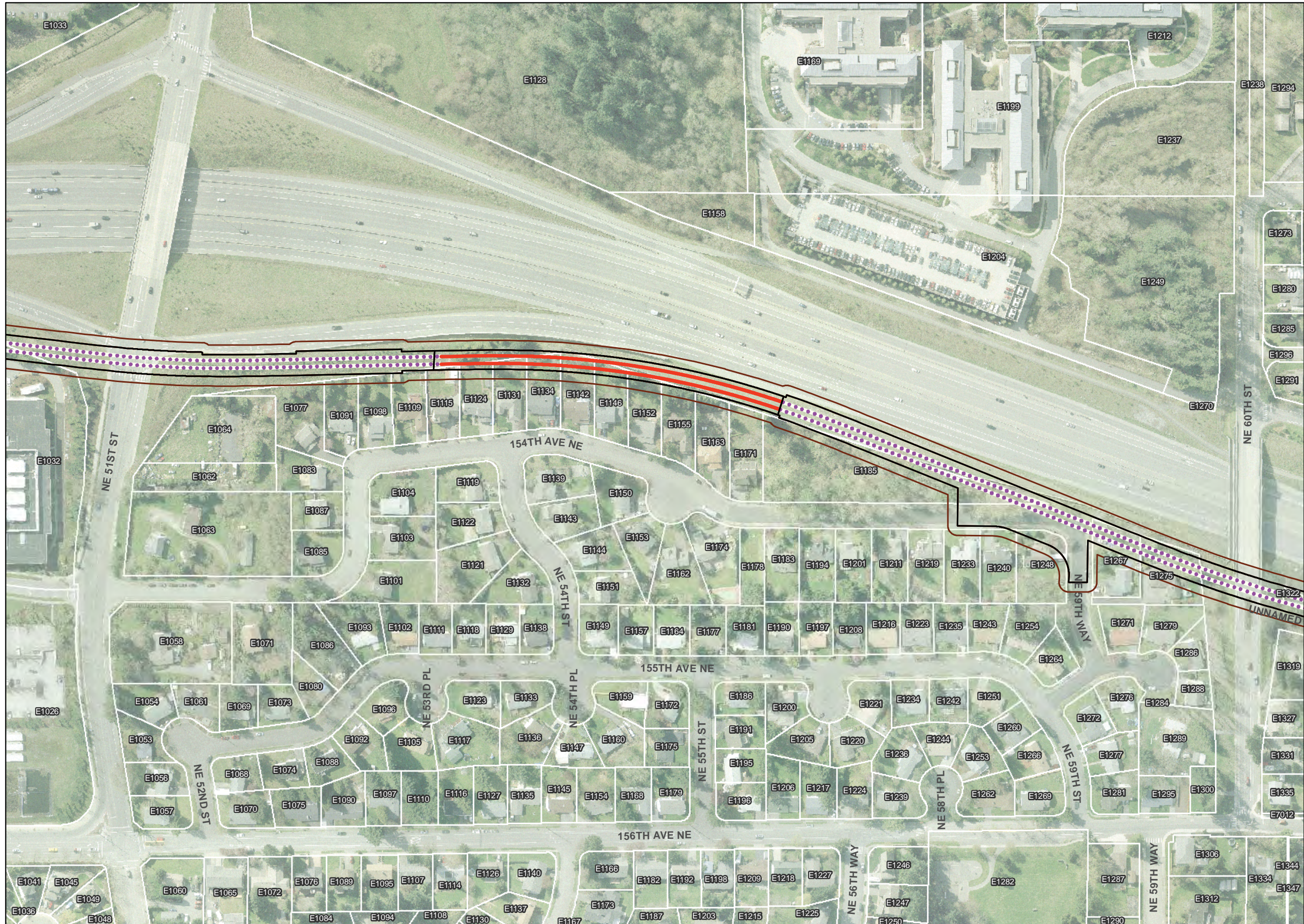
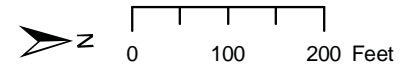




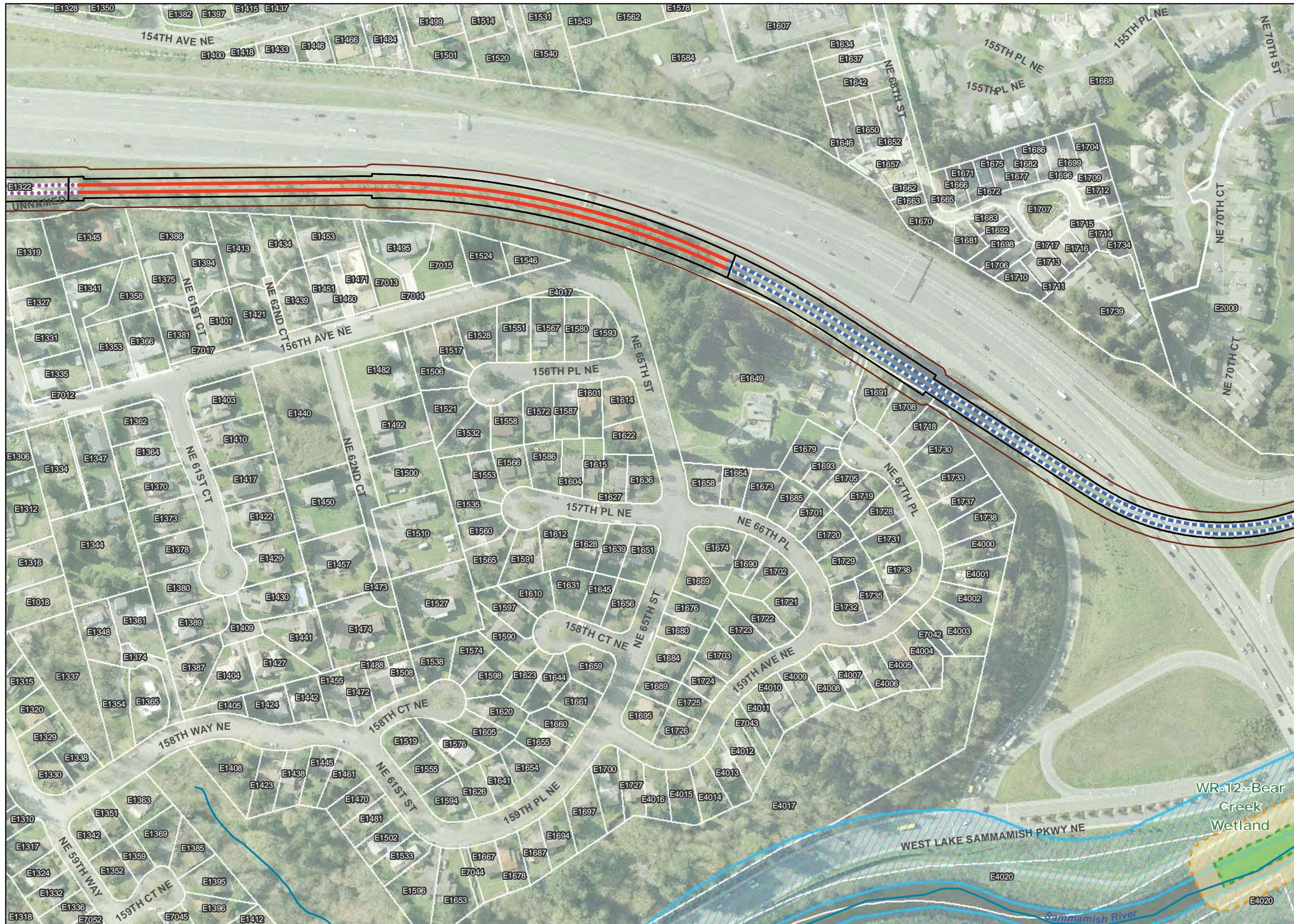
**Exhibit F-122  
Wetland, Wetland Buffer,  
and Wetland Mitigation  
Impacts  
Alternative E4  
Sheet 2  
East Link Project**

- At-Grade Route
- - - Elevated Route
- Retained-Cut Route
- Retained-Fill Route
- - - Tunnel Route
- Operational Footprint**
- ROW
- Park and Ride
- Construction Footprint**
- Construction Footprint
- Staging Area
- Station
- Maintenance Facility
- Wetland
- Wetland Buffer
- Wetland Mitigation Site (WSDOT)
- Operational Wetland Impact
- Construction Wetland Impact
- Operational Wetland Buffer Impact
- Construction Wetland Buffer Impact
- Wetland Mitigation Impact
- Stream Buffer
- Open Channel
- Piped Stream
- Parcel with MapID

Aerial Photo: Sound Transit (2009)

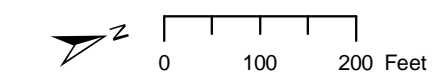


**Exhibit F-123**  
**Wetland, Wetland Buffer, and Wetland Mitigation Impacts**  
**Alternative E4**  
**Sheet 3**  
*East Link Project*

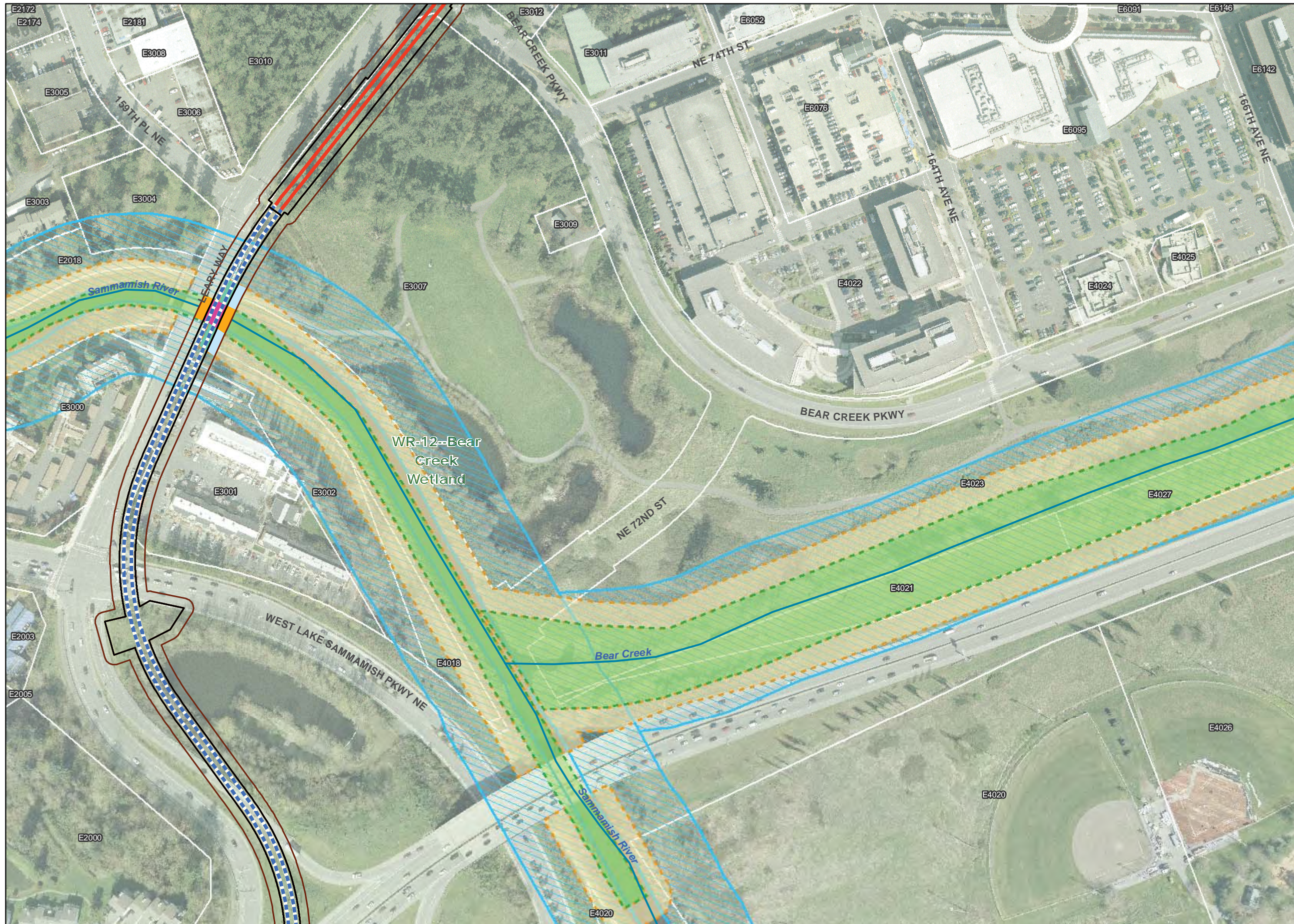


- At-Grade Route
- Elevated Route
- Retained-Cut Route
- Retained-Fill Route
- Tunnel Route
- Operational Footprint**
- ROW
- Park and Ride
- Construction Footprint**
- Construction Footprint
- Staging Area
- Station
- Maintenance Facility
- Wetland
- Wetland Buffer
- Wetland Mitigation Site (WSDOT)
- Operational Wetland Impact
- Construction Wetland Impact
- Operational Wetland Buffer Impact
- Construction Wetland Buffer Impact
- Wetland Mitigation Impact
- Stream Buffer
- Open Channel
- Piped Stream
- Parcel with MapID

Aerial Photo: Sound Transit (2009)

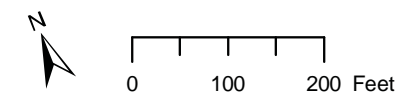


**Exhibit F-124**  
**Wetland, Wetland Buffer, and Wetland Mitigation Impacts**  
**Alternative E4**  
**Sheet 4**  
**East Link Project**

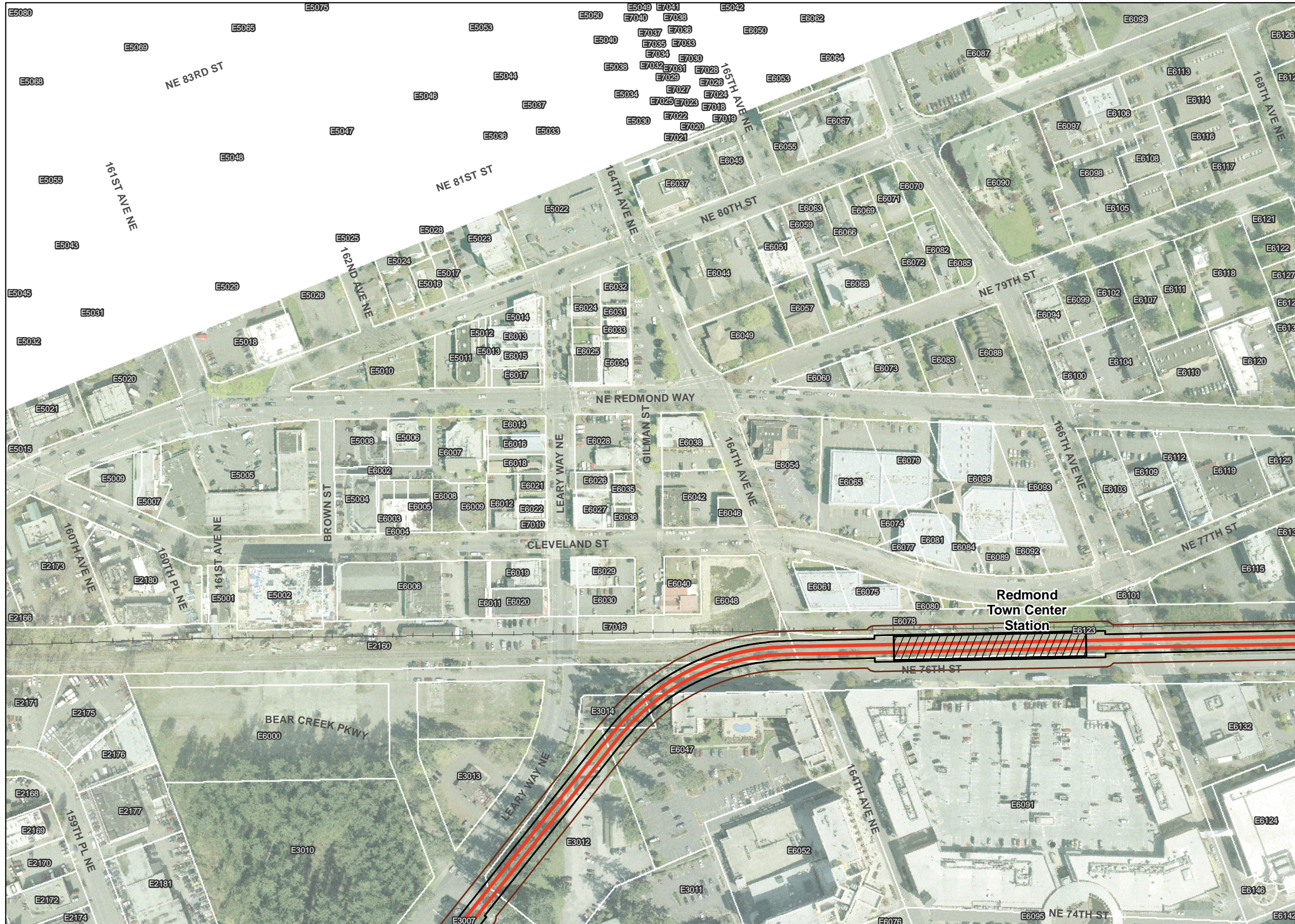


- At-Grade Route
- - - Elevated Route
- Retained-Cut Route
- Retained-Fill Route
- - - Tunnel Route
- Operational Footprint**
- ▭ ROW
- ▭ Park and Ride
- Construction Footprint**
- ▭ Construction Footprint
- ▭ Staging Area
- ▭ Station
- ▭ Maintenance Facility
- ▭ Wetland
- ▭ Wetland Buffer
- ▭ Wetland Mitigation Site (WSDOT)
- ▭ Operational Wetland Impact
- ▭ Construction Wetland Impact
- ▭ Operational Wetland Buffer Impact
- ▭ Construction Wetland Buffer Impact
- ▭ Wetland Mitigation Impact
- ▭ Stream Buffer
- ▭ Open Channel
- ▭ Piped Stream
- ▭ Parcel with MapID

Aerial Photo: Sound Transit (2009)

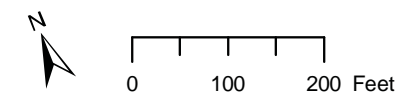


**Exhibit F-125**  
**Wetland, Wetland Buffer, and Wetland Mitigation Impacts**  
**Alternative E4**  
**Sheet 5**  
*East Link Project*

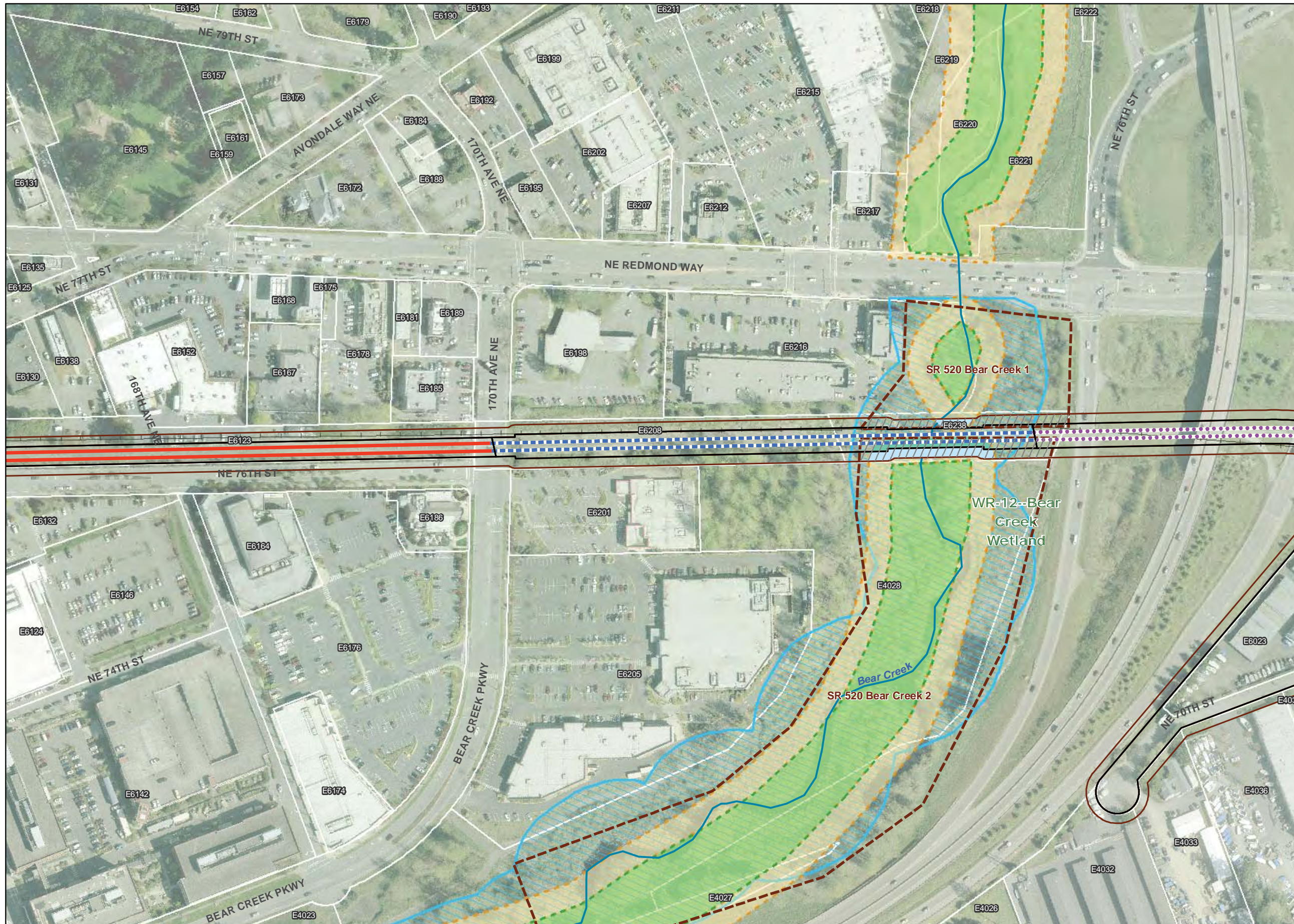


- At-Grade Route
- - - Elevated Route
- Retained-Cut Route
- Retained-Fill Route
- - - Tunnel Route
- Operational Footprint**
- ROW
- Park and Ride
- Construction Footprint**
- Construction Footprint
- Staging Area
- Station
- Maintenance Facility
- Wetland
- Wetland Buffer
- Wetland Mitigation Site (WSDOT)
- Operational Wetland Impact
- Construction Wetland Impact
- Operational Wetland Buffer Impact
- Construction Wetland Buffer Impact
- Wetland Mitigation Impact
- Stream Buffer
- Open Channel
- Piped Stream
- Parcel with MapID

Aerial Photo: Sound Transit (2009)

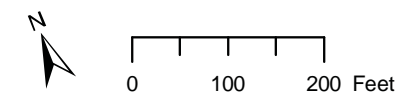


**Exhibit F-126**  
**Wetland, Wetland Buffer, and Wetland Mitigation Impacts**  
**Alternative E4**  
**Sheet 6**  
**East Link Project**

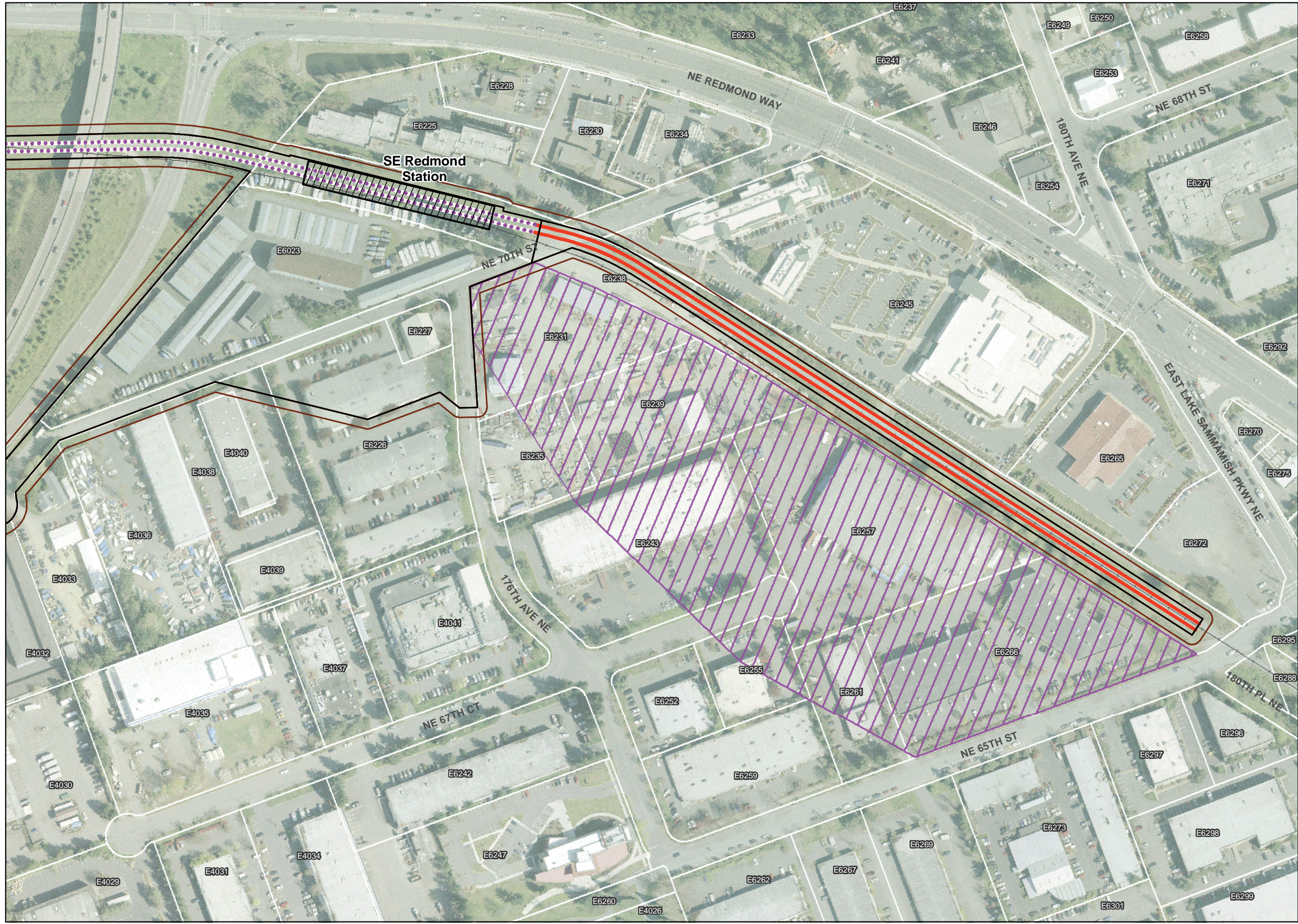


- At-Grade Route
- Elevated Route
- Retained-Cut Route
- Retained-Fill Route
- Tunnel Route
- Operational Footprint**
- ROW
- Park and Ride
- Construction Footprint**
- Construction Footprint
- Staging Area
- Station
- Maintenance Facility
- Wetland
- Wetland Buffer
- Wetland Mitigation Site (WSDOT)
- Operational Wetland Impact
- Construction Wetland Impact
- Operational Wetland Buffer Impact
- Construction Wetland Buffer Impact
- Wetland Mitigation Impact
- Stream Buffer
- Open Channel
- Piped Stream
- Parcel with MapID

Aerial Photo: Sound Transit (2009)



**Exhibit F-127  
Wetland, Wetland Buffer, and Wetland Mitigation Impacts  
Alternative E4  
Sheet 7  
East Link Project**



- At-Grade Route
- Elevated Route
- Retained-Cut Route
- Retained-Fill Route
- Tunnel Route
- Operational Footprint**
- ROW
- Park and Ride
- Construction Footprint**
- Construction Footprint
- Staging Area
- Station
- Maintenance Facility
- Wetland
- Wetland Buffer
- Wetland Mitigation Site (WSDOT)
- Operational Wetland Impact
- Construction Wetland Impact
- Operational Wetland Buffer Impact
- Construction Wetland Buffer Impact
- Wetland Mitigation Impact
- Stream Buffer
- Open Channel
- Piped Stream
- Parcel with MapID

Aerial Photo: Sound Transit (2009)

