

# *East Link Project Update Citizen Oversight Panel*

*September 16, 2020*





# East Link Alignment



# East Link Financial Snapshot

<b>Project Budget</b>	<b>\$3.677 B</b>
Committed	\$3.124 B
Incurred	\$2.634 B

Notes: Financials as of August 31, 2020. Dollars are in year of expenditure.  
Project Baselined in April 2015.

# *Challenges/Upcoming Milestones*

## *Challenges*

- COVID-19 Impacts
- Maintaining Station Construction Schedules
- Ramp up of System Installations
- Redmond Technology Station Garage

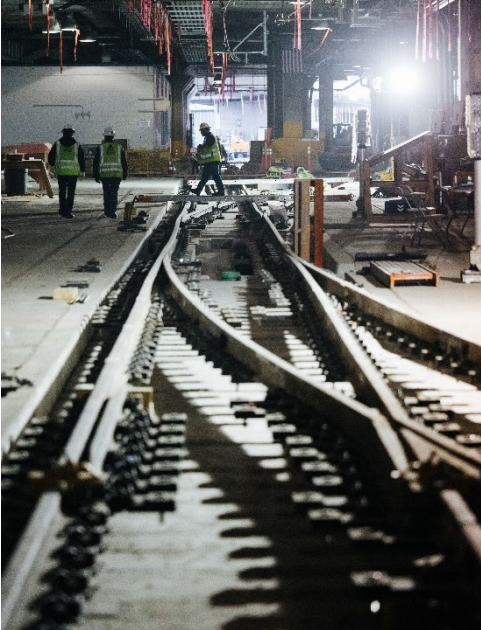
## *Upcoming Milestones*

- Completion of Mercer Island, 130<sup>th</sup>, Overlake and Redmond technology stations- 4Q 2020

# *Key Challenges and Risks*

- *Redmond Technology Station Garage*
- *COVID-19*
- *Bellevue Downtown Station*
- *Late Design Changes from External and Internal Partners*
- *Late Emerging Contractor Costs*

# Connect 2020



# Judkins Park Station





# *Floating Bridge*



# Floating Bridge



# *Mercer Island Station*



# *I-90 Long-Span Crossing*



# South Bellevue Station



# *Winters House*



# East Main Station



# *Bellevue Downtown Tunnel*





# *Bellevue Downtown Station*



# *I-405 Crossing*



# *Wilburton Station*



# 120th Station



# TOD in Bellevue's Bel-Red Corridor

OMFE  
TOD

City of  
Bellevue  
130<sup>th</sup> TOD



120th Station



GLOBAL  
INNOVATION  
EXCHANGE



sparc  
APARTMENTS

# 130th Station



# Overlake Village Station



# OVS Pedestrian Bridge





# *Redmond Technology Station*



# *RTS Garage*



*Thank you.*



 [soundtransit.org](https://soundtransit.org)

