

WELCOME AND AGENDA

DOWNTOWN REDMOND LINK EXTENSION

Welcome

At tonight's open house you will have the opportunity to:

- See updated design plans for the southeast and downtown Redmond stations and track
- Help shape the look and feel of light rail in Redmond
- Learn more about our updated environmental review, project timeline and next steps



Agenda

5 p.m. Open house

View displays and roll plot maps, talk to project staff, and complete a comment form.

5:30 – 6 p.m. Overview presentation

Learn about plans for light rail coming to downtown Redmond.

6 – 7 p.m. Open house

View displays and roll plot maps, talk to project staff, and complete a comment form.

7 p.m. Meeting adjourns

PROJECT OVERVIEW

DOWNTOWN REDMOND LINK EXTENSION



The Downtown Redmond Link Extension builds new light rail from the Redmond Technology Center Station, opening in 2023, to downtown Redmond by 2024. Light rail will travel along SR 520 with two new stations in southeast Redmond, at Marymoor Park, and downtown Redmond. This project is part of the voter approved system expansion to add 62 more miles of light rail throughout the region.

Benefits:

- 3.4 miles of new light rail service
- Two new light rail stations in downtown and southeast Redmond, near Marymoor Park
- Frequent, reliable service between Redmond, Bellevue, Seattle and the University of Washington, and other regional destinations
- Increased mobility, access and transportation capacity for residents and workers
- Open for service in 2024

SYSTEM MAP

DOWNTOWN REDMOND LINK EXTENSION

Link Light Rail

Future service:

- (Everett–Seattle–West Seattle)
- (Redmond–Seattle–Lynnwood)
- (Ballard–Seattle–Tacoma)
- (Issaquah–Bellevue–South Kirkland)
- (Tacoma Dome–Tacoma Community College)

In service:

- Univ. of Washington–Angle Lake
- Tacoma Dome–Theater District

Sounder Commuter Rail

Future service:

- DuPont–Lakewood

In service:

- North Line (Everett–Seattle)
- South Line (Lakewood–Seattle)

Bus

Future service:

- Bus Rapid Transit (BRT)

In service:

- ST Express bus (service re-evaluated annually)

○ New station or bus facility
 P Added parking
 ⊕ Station improvements
 ∞ Major transfer hub
 ○ Existing station or bus facility
 P Existing parking
 ○ Provisional light rail station



PROJECT HISTORY

DOWNTOWN REDMOND LINK EXTENSION

2007-13

East Link Record of Decision

- Sound Transit completed environmental review and identified a preferred alternative*
- Two at-grade stations in southeast and downtown Redmond
- Train storage tracks
- Open houses, hearings, and comment periods
- Sound Transit Board selected project to build

2016

System expansion approved by voters

- Sound Transit secured funding build Downtown Redmond Link Extension

VOTERS APPROVE
SOUND TRANSIT 3



2017

City of Redmond bus/rail transit integration study

- Final report recommended an elevated downtown Redmond station
- Open house and comment period

Conceptual engineering

- Sound Transit refined conceptual design plans
- Stakeholder meetings and open house
- Sound Transit Board identified proposed project refinements (June)

We are here

Preliminary engineering and environmental updates

- Update environmental review
- Preliminary engineering and design
- Open house, survey and stakeholder coordination

2017-19

Pre-construction

- Finalize project requirements and hire design builder
- Acquire property needed to build project
- Community engagement

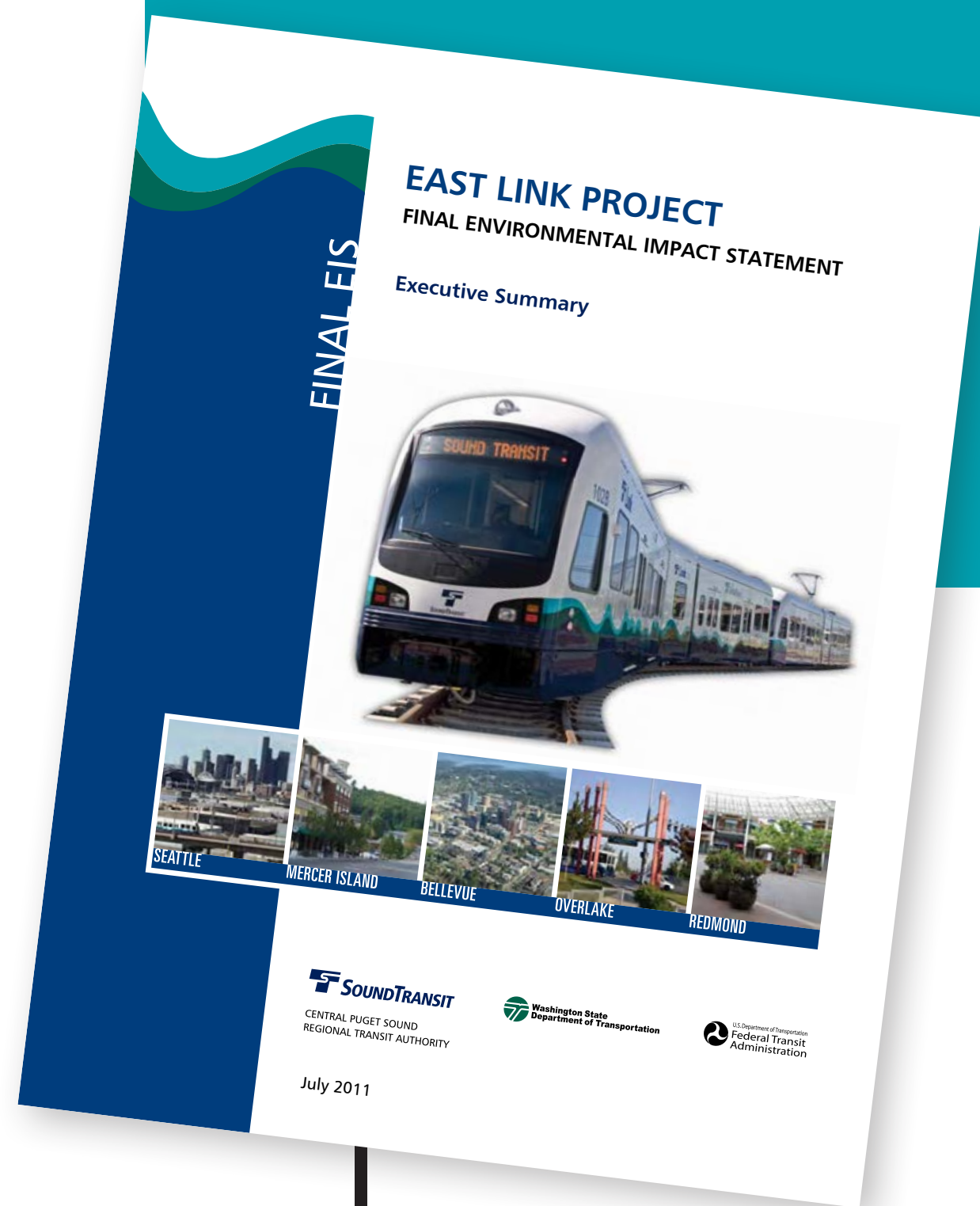
2019-23

Design and Construction

- Sound Transit will continue to update the public as design and construction progress.

2023-24

Systems testing and light rail service begins

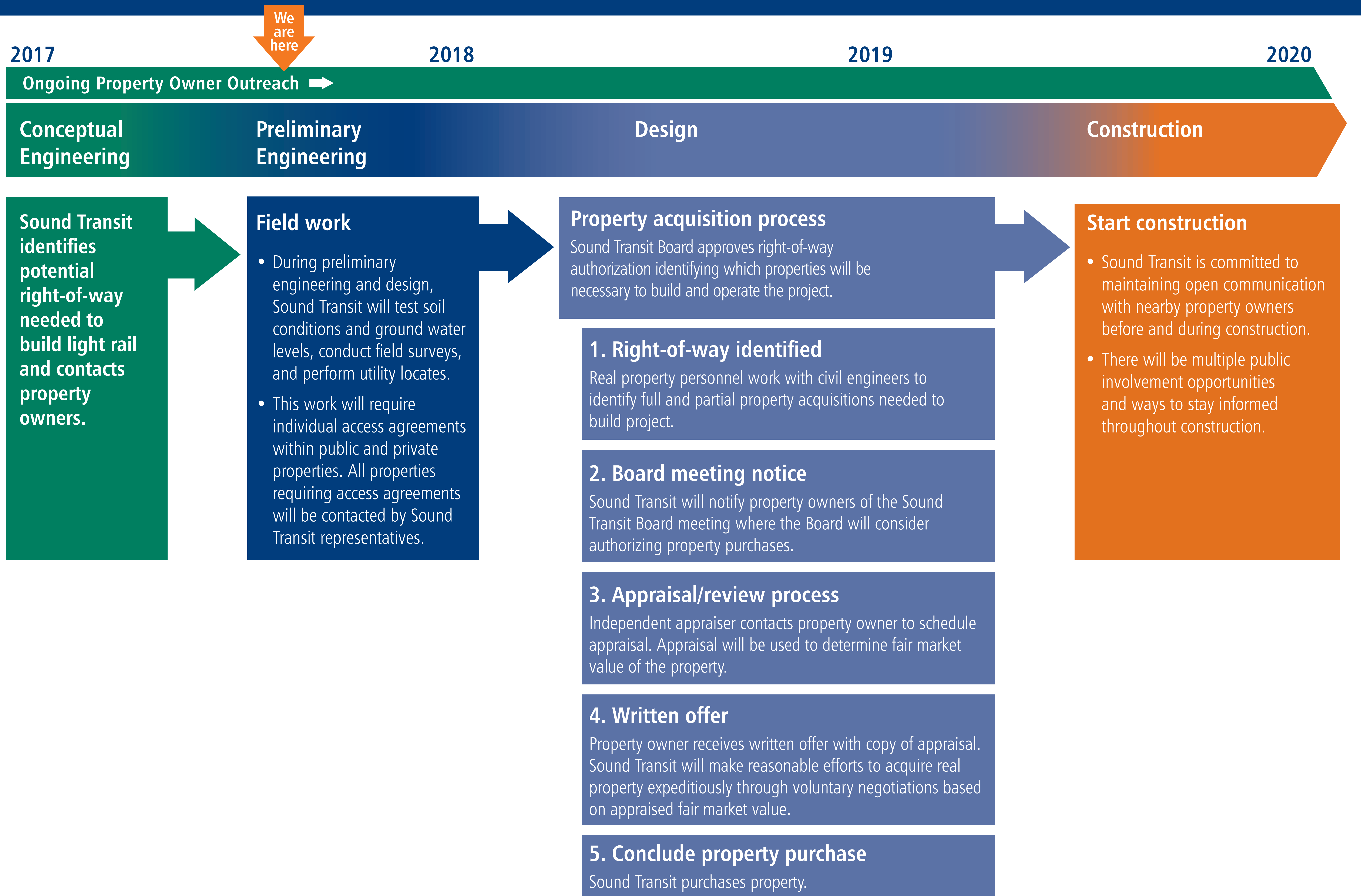


*The 2007-2009 Great Recession reduced the projected ST2 tax revenues by approximately \$4.2 billion. In response, the Sound Transit Board removed these two stations from the East Link Extension project until funding could be identified.



HOW WILL SOUND TRANSIT WORK WITH PROPERTY OWNERS?

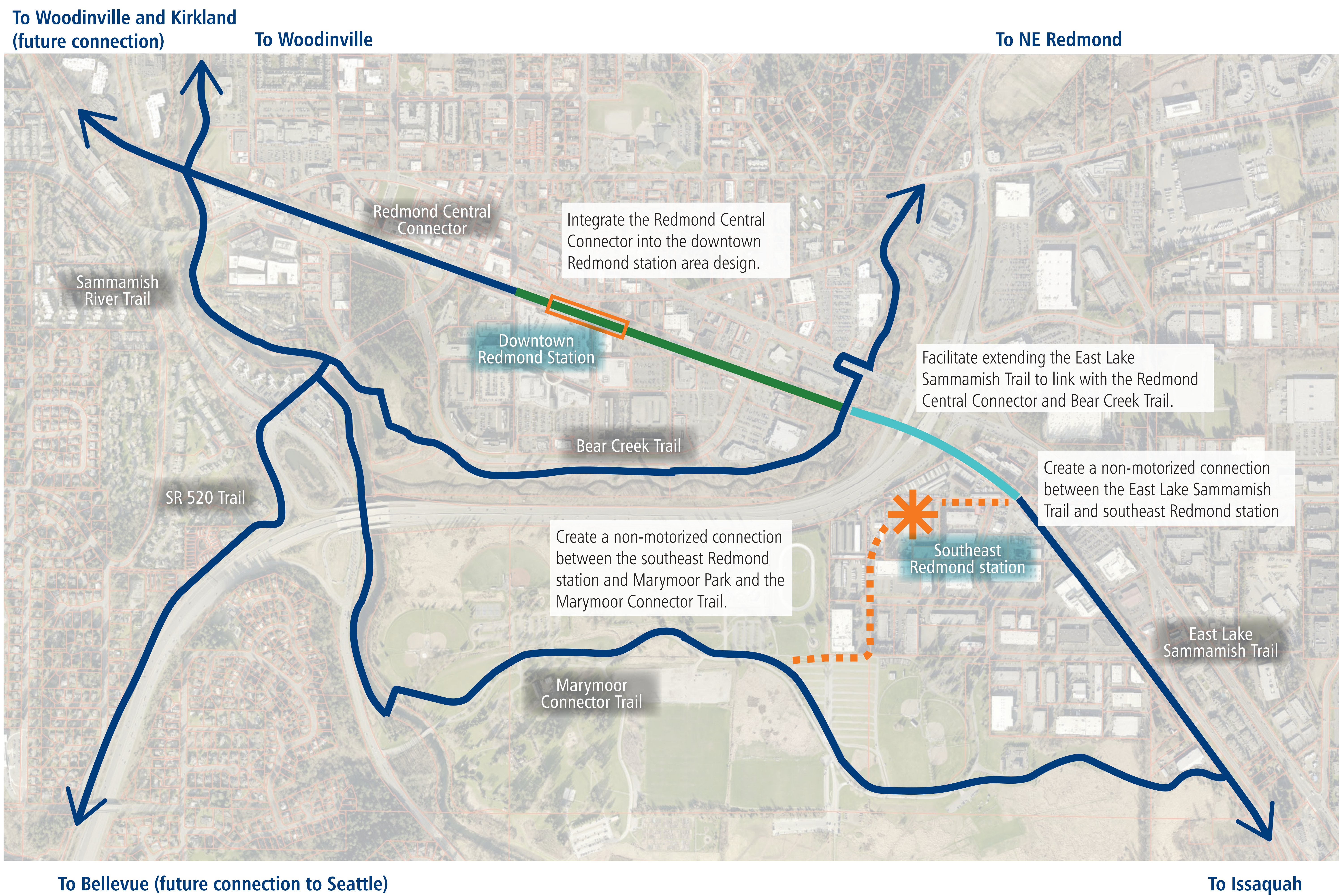
DOWNTOWN REDMOND LINK EXTENSION



REGIONAL TRAIL CONNECTIONS

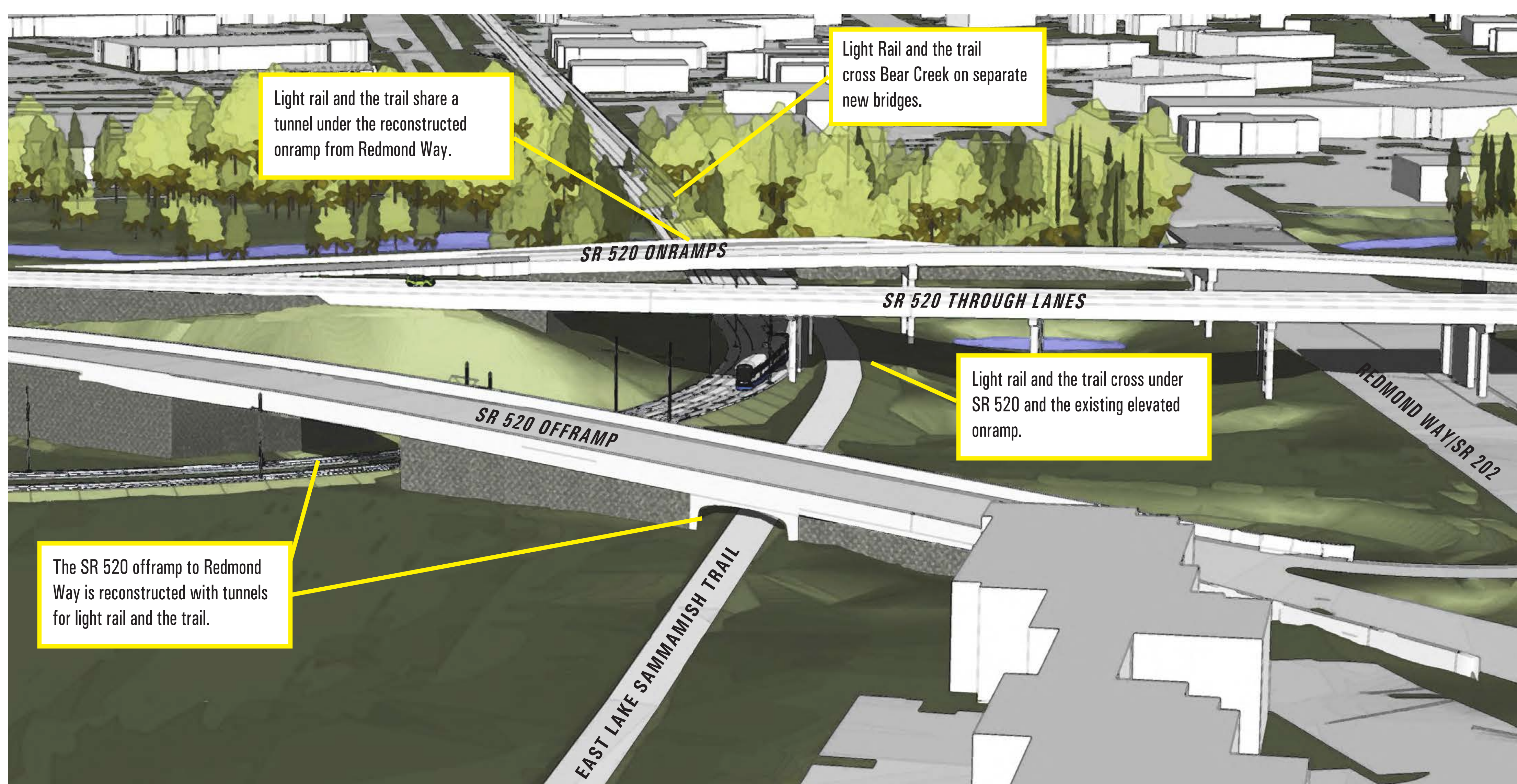
DOWNTOWN REDMOND LINK EXTENSION

Sound Transit, King County and the City of Redmond are working together to connect future light rail service in Redmond to nearby regional trails.



Connecting the East Lake Sammamish Trail to the Redmond Central Connector and Bear Creek Trail completes a "missing link" in the King County Regional Trails Network.

CONNECTING THE EAST LAKE SAMMAMISH TRAIL "MISSING LINK"



The construction of the light rail guideway between southeast Redmond and Downtown, requiring reconstruction of the SR 520 Interchange, creates the opportunity to extend the East Lake Sammamish Trail through the SR 520 Interchange.



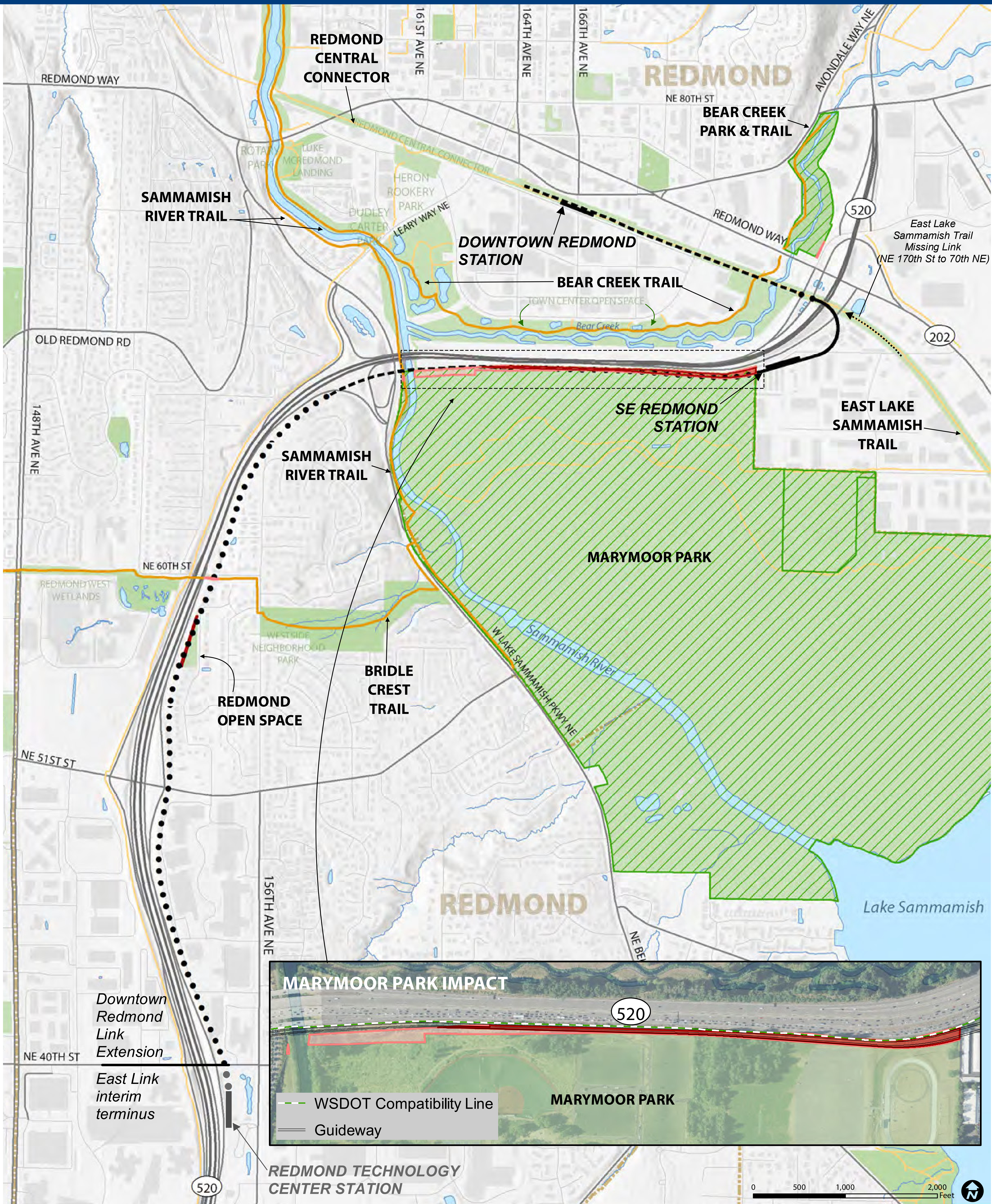
Example of trail tunnel



Example of trail bridge

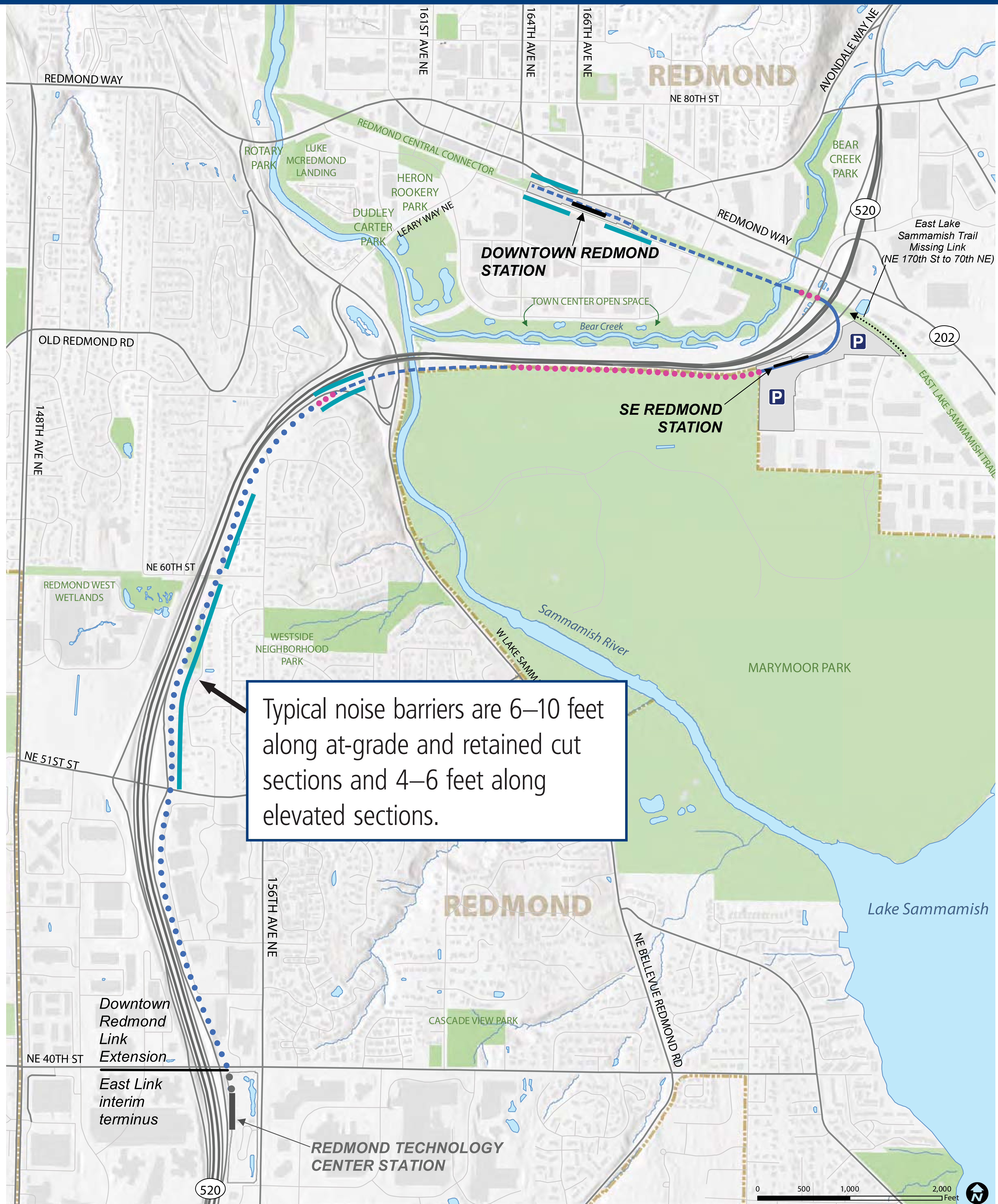
PROPOSED PROJECT REFINEMENTS: PARKS

DOWNTOWN REDMOND LINK EXTENSION



PROPOSED PROJECT REFINEMENTS: NOISE WALLS

DOWNTOWN REDMOND LINK EXTENSION



- | | | |
|---------------|------------------|-------------------------------|
| At-Grade | Station Platform | Proposed noise wall locations |
| Elevated | Station Area | |
| Retained Fill | Park & Ride | |
| Retained Cut | | |

Source: USGS, City of Redmond, King County, Parametrix