



Downtown Redmond Link Extension

Open House

November 16, 2017

Tonight's agenda

- Downtown Redmond Link
Extension project progress update
- Station design overview,
challenges, opportunities
- Station area survey
- Open house displays and people
- Next steps



2024



Light rail

- SE and Downtown Redmond
- Kent/Des Moines, Federal Way



Bus

- BRT - Lynnwood to Burien
- BRT - SR 522 to NE 45th
- North Sammamish park-and-ride

Downtown Redmond Link Extension



- 3.4-mile light rail extension
- Two stations
- 1400 parking spaces
- Open for service in 2024
- Downtown Redmond to:
 - Downtown Bellevue in 18 minutes
 - International District Station in 38 minutes

Project schedule

2017			2017-19	2019-23	2023-24
City of Redmond bus/rail transit integration study <ul style="list-style-type: none"> • Final report recommended an elevated downtown Redmond station • Open house and comment period 	Conceptual engineering <ul style="list-style-type: none"> • Sound Transit refined conceptual design plans • Stakeholder meetings and open house • Sound Transit Board identified proposed project refinements (June) 	 Preliminary engineering and environmental updates <ul style="list-style-type: none"> • Update environmental review • Preliminary engineering and design • Open house and survey and stakeholder coordination 	Pre-construction <ul style="list-style-type: none"> • Finalize project requirements and hire design builder • Acquire property needed to build project • Community engagement 	Design and Construction	Systems testing and light rail service begins

Station neighborhoods



Marymoor Village



Faith Community



Recreation Services



Food & Beverage
Manufacturing & Retail

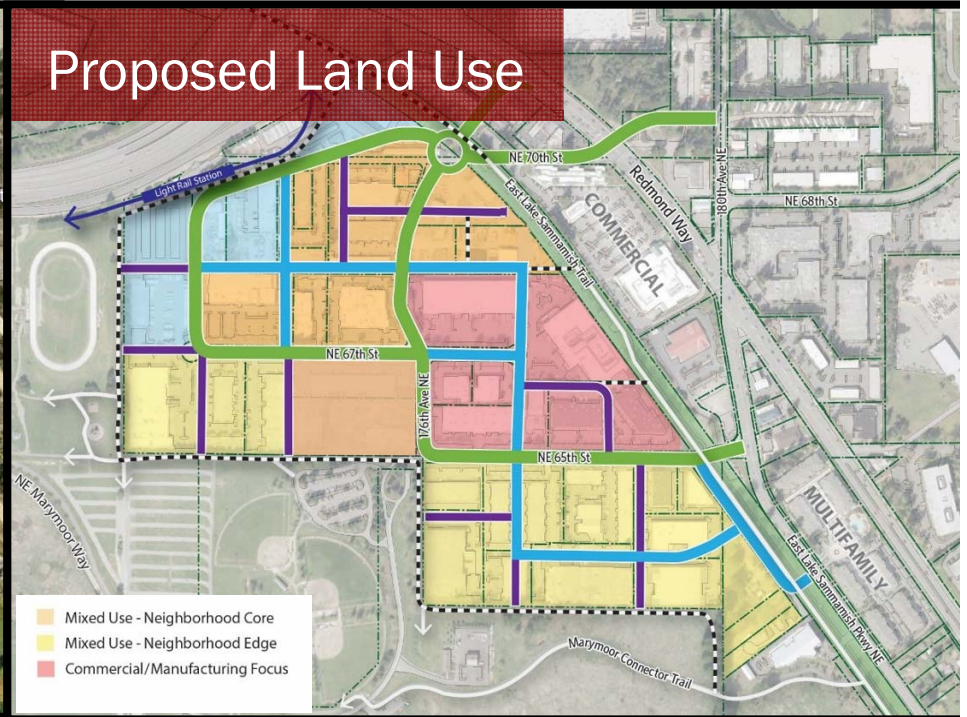


Marymoor Village

Current Land Use



Proposed Land Use



Marymoor Village

- Opportunities for:
- Living
 - Employment
 - Community gathering
 - Education
 - Shopping
 - Embrace the natural environment
 - Create a walkable neighborhood



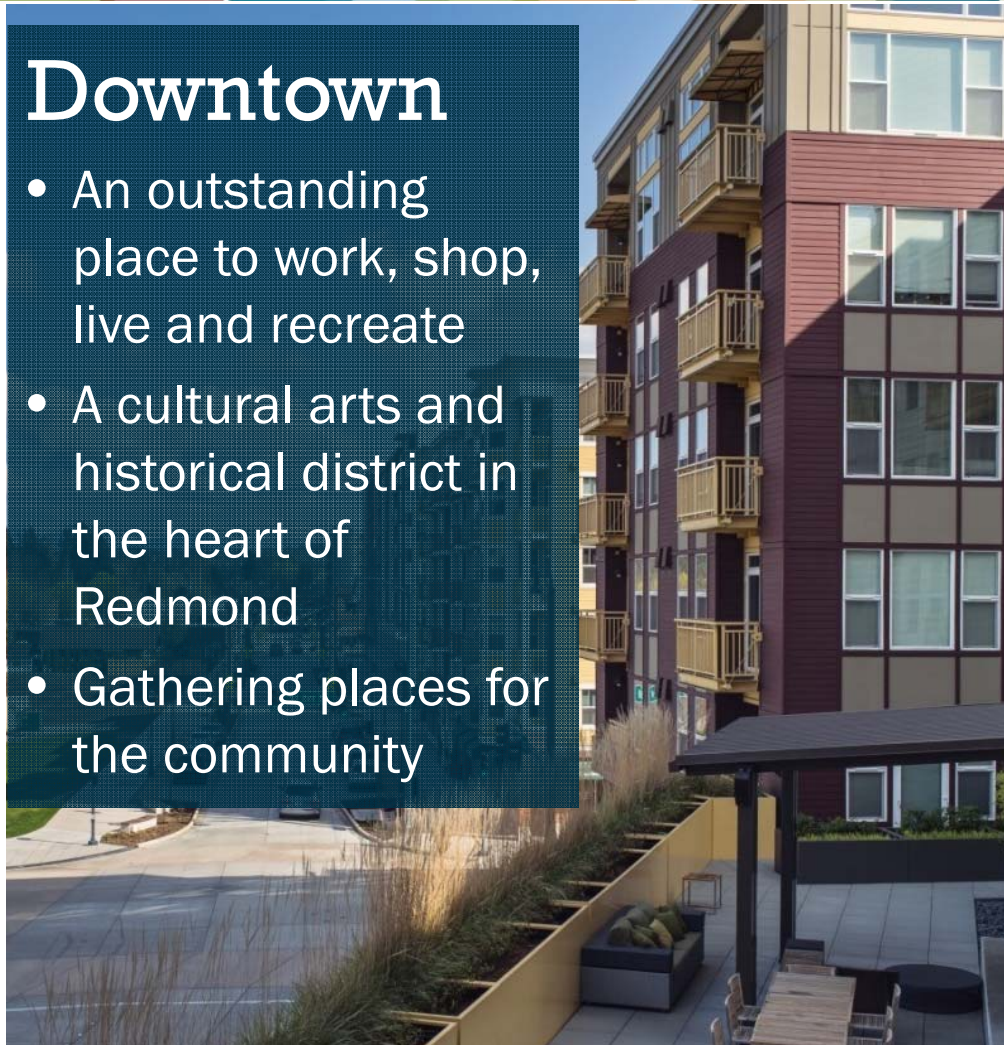
Downtown

Realizing the Vision



Downtown

- An outstanding place to work, shop, live and recreate
- A cultural arts and historical district in the heart of Redmond
- Gathering places for the community



Community Events

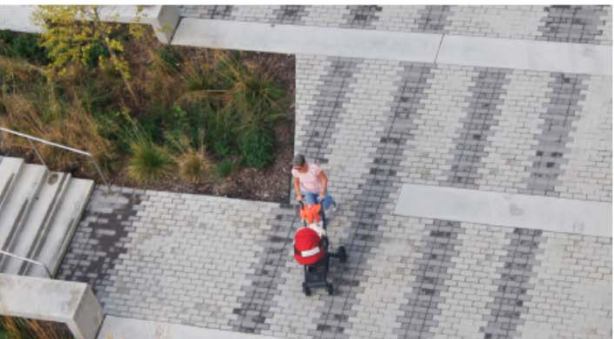


Downtown Park



Downtown

East Link on the Redmond Central Connector



Contrast Urban |



Downtown

East Link on the Redmond Central Connector



Downtown

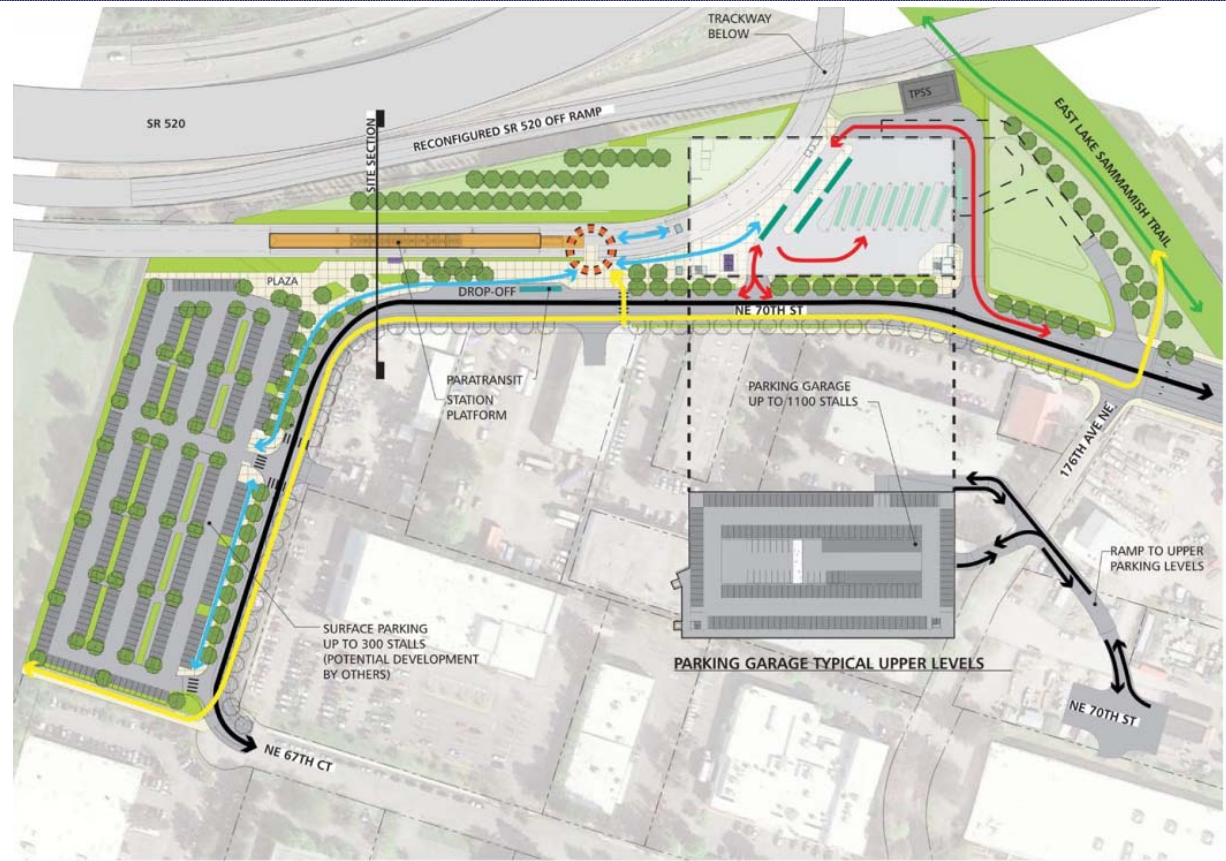
East Link on the Redmond Central Connector



Places to Gather

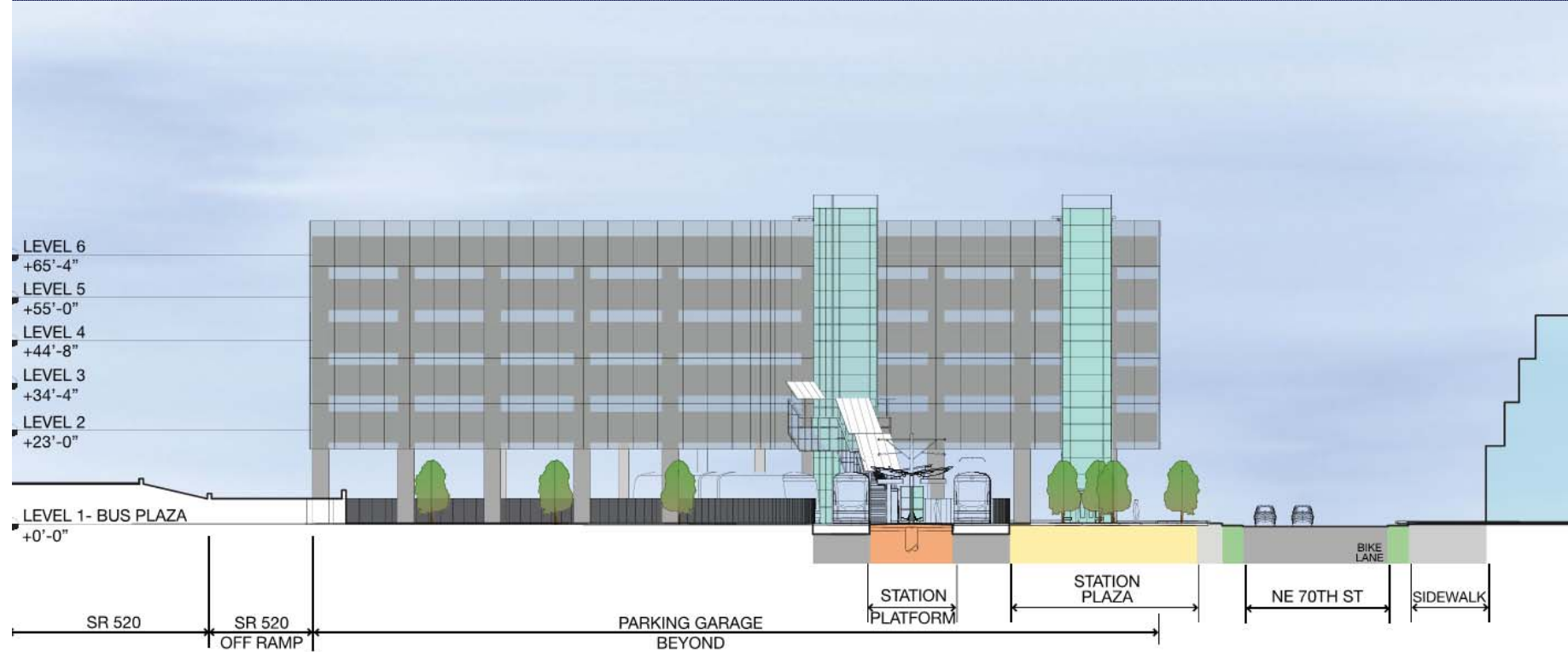


Southeast Redmond station



- LEGEND**
- CENTER AT-GRADE PLATFORM
 - STATION PLAZA
 - TRACKWAY
 - EAST LAKE SAMMAMISH TRAIL
 - PARKING GARAGE
 - STATION ENTRY
 - BIKE LANE
 - BIKE & PEDESTRIAN TRAIL
 - PEDESTRIAN ROUTE
 - BUS ROUTE
 - GENERAL TRAFFIC ROUTE
 - ACTIVE BUS BAYS
 - BUS LAYOVER
 - PARATRANSIT DROP OFF & PICK UP

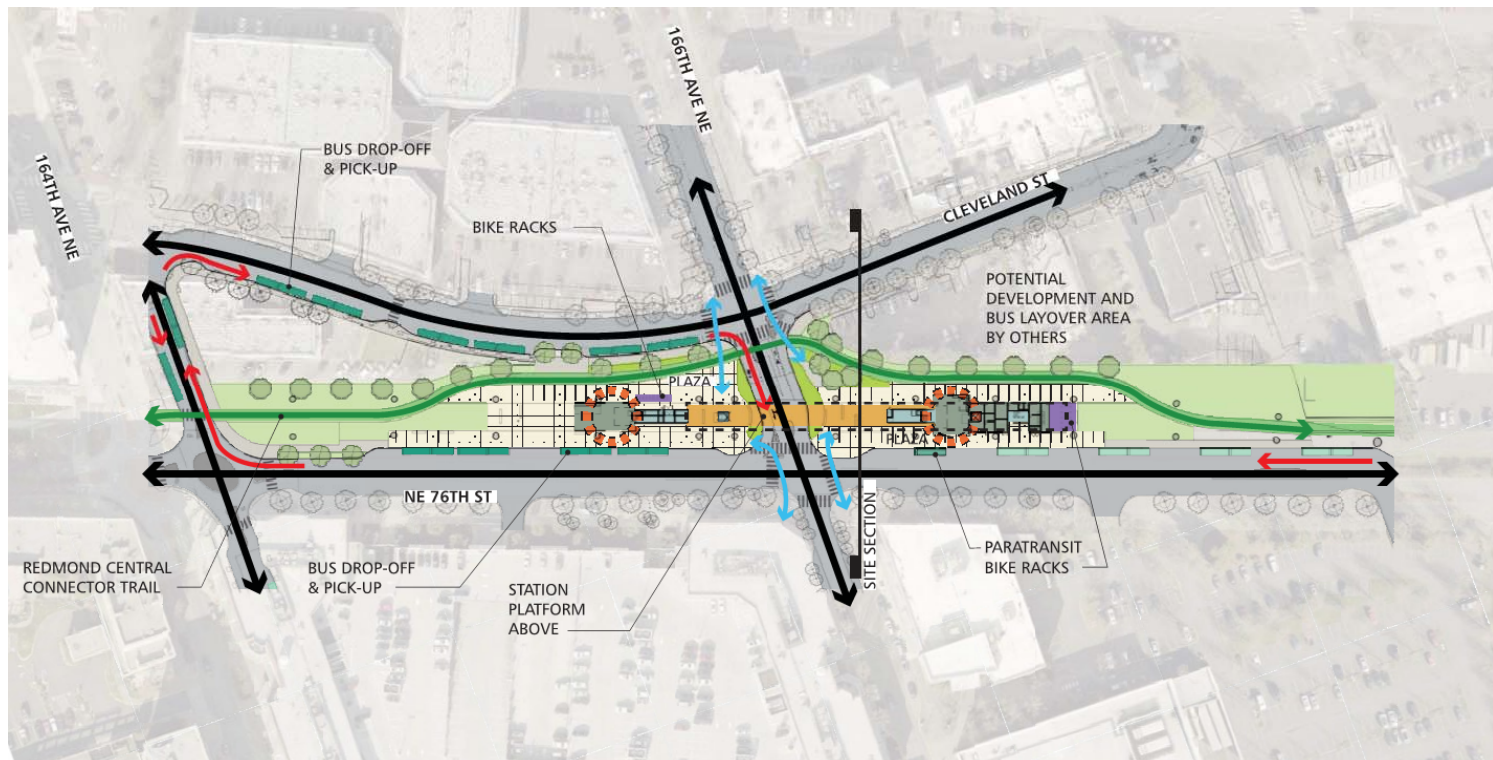
Southeast Redmond station profile



Southeast Redmond station concept sketch



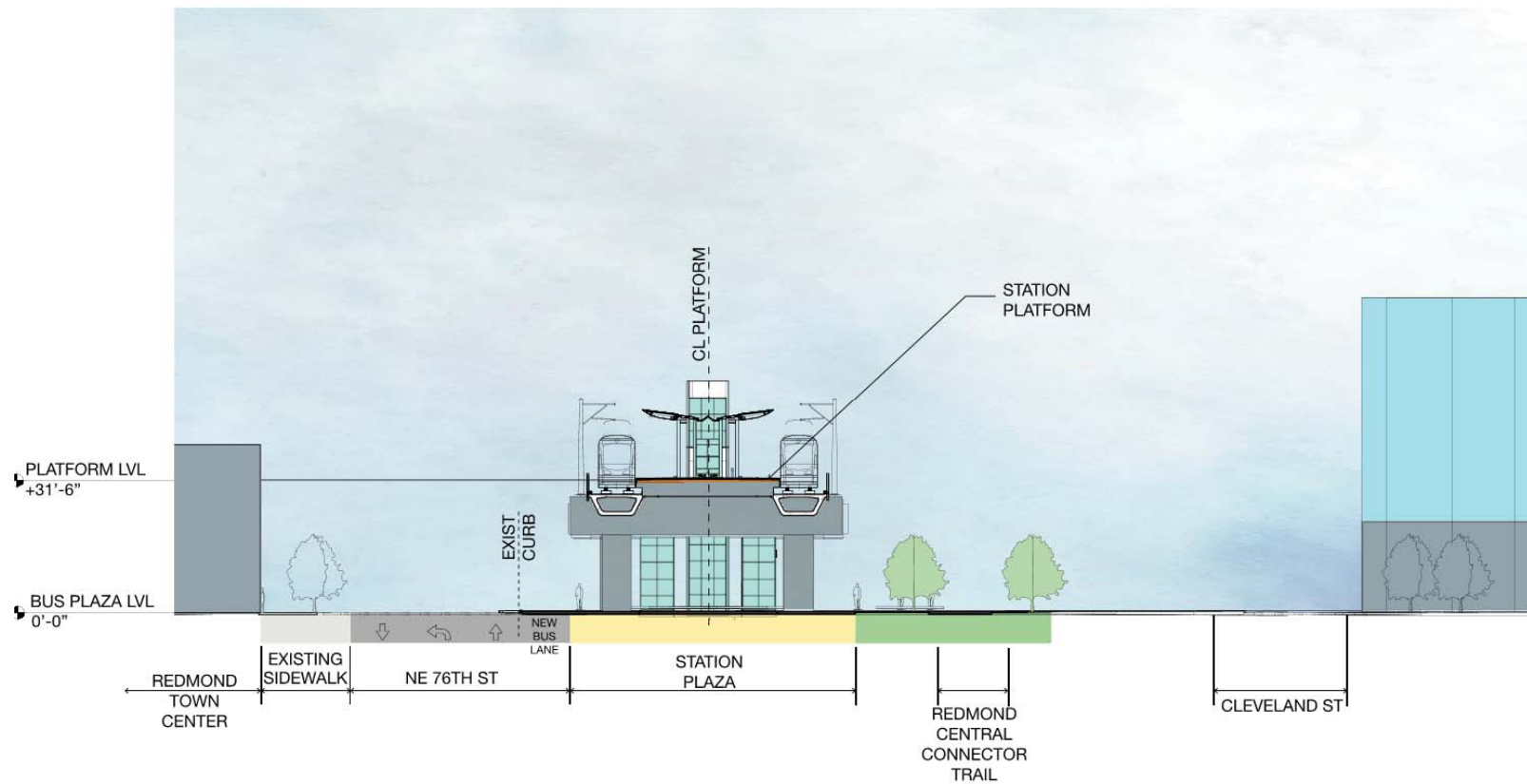
Downtown Redmond station



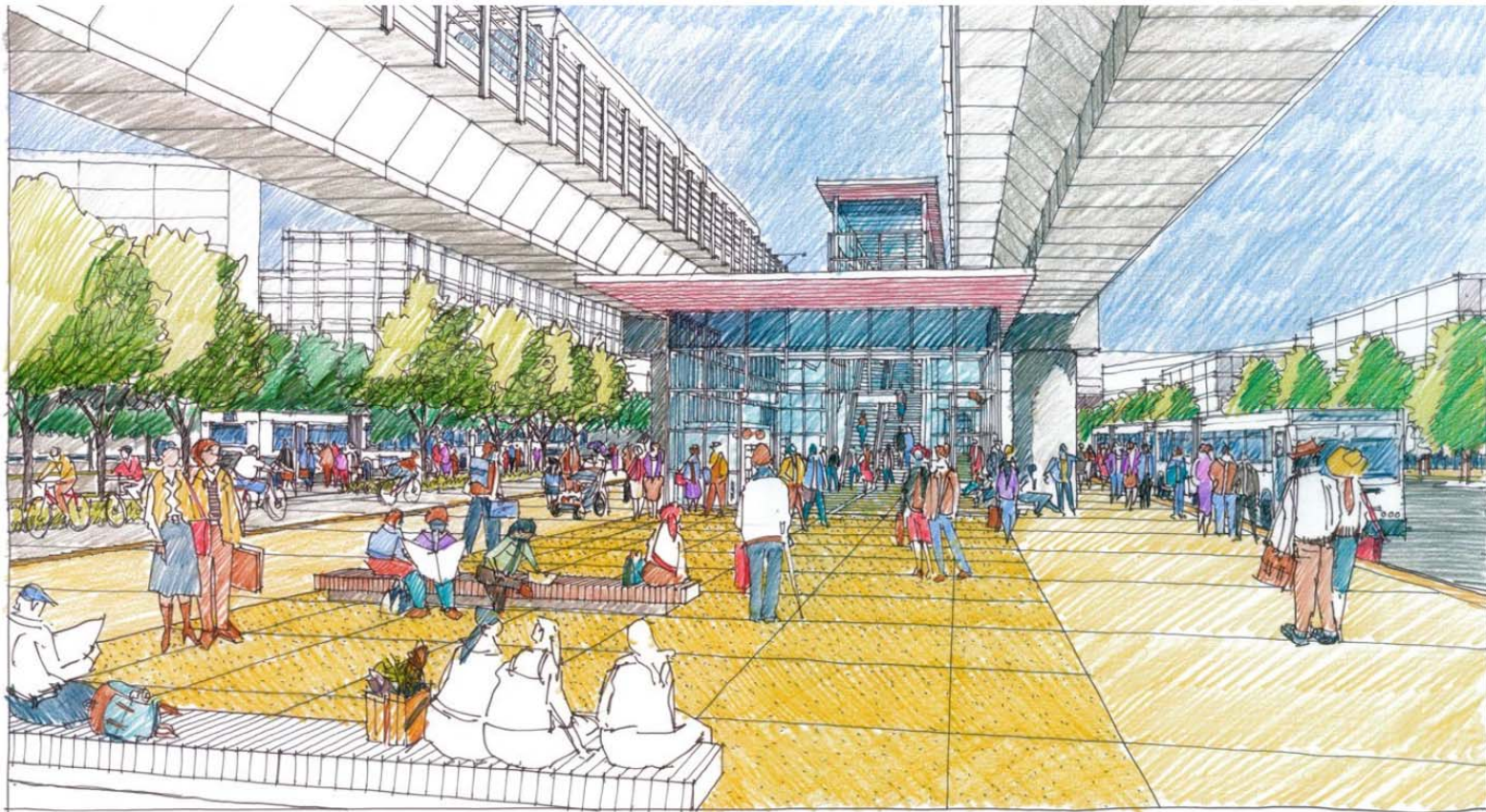
LEGEND

- CENTER ELEVATED PLATFORM
- PLAZA
- ELEVATED TRACK
- REDMOND CENTRAL CONNECTOR TRAIL
- RCC TRAIL
- SUPPORT SPACES
- STATION ENTRY
- BIKE & PEDESTRIAN TRAIL
- PEDESTRIAN ROUTE
- BUS ROUTE
- GENERAL TRAFFIC ROUTE
- ACTIVE BUS BAYS
- BUS LAYOVER
- PARATRANSIT

Downtown Redmond station profile



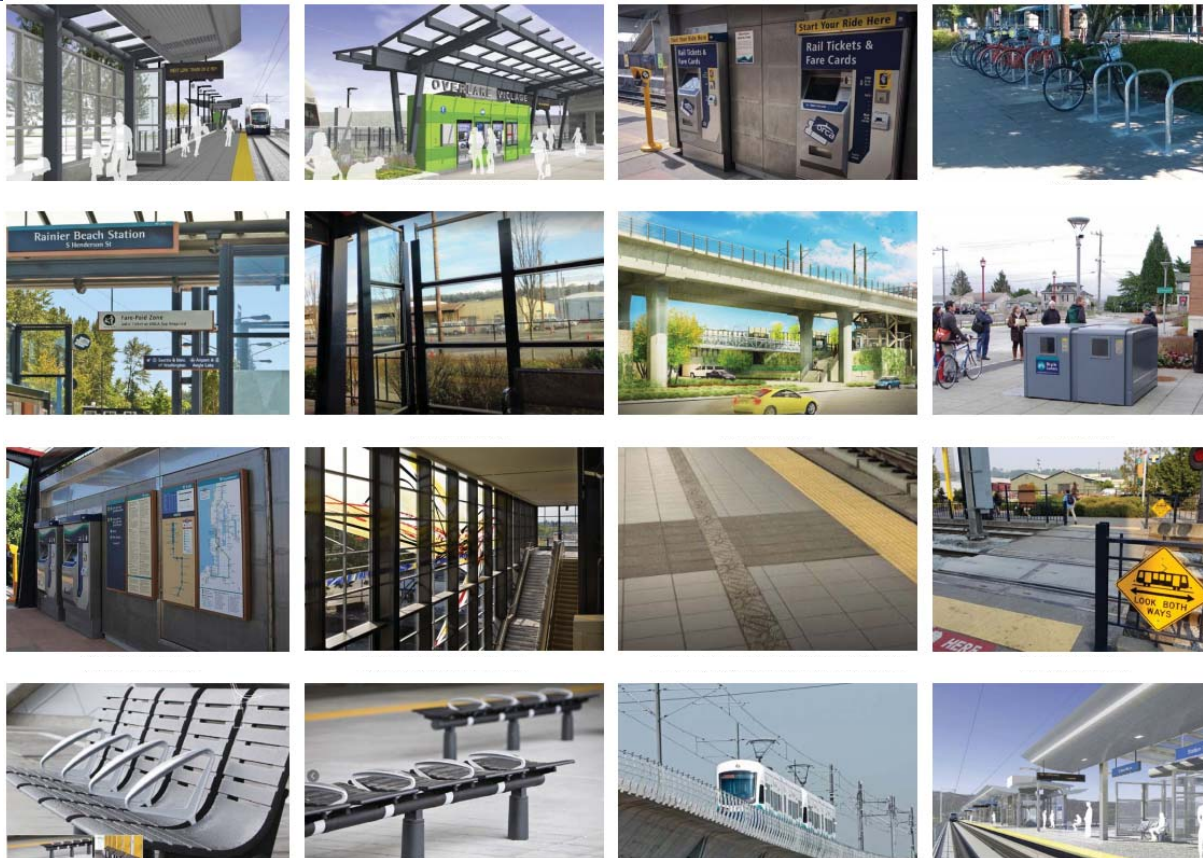
Downtown Redmond station concept sketch



Station area survey

Tell us what you think!
Take our survey

Standard design features



Urban design opportunities

Tell us what you think!
Take our survey

Bike and pedestrian



Urban design opportunities

Tell us what you think!
Take our survey

Landscape



Hardscape



Urban design opportunities

Tell us what you think!
Take our survey

Potential flexible space



Urban design opportunities

Tell us what you think!
Take our survey

Lighting



Urban design opportunities

Garage design (southeast Redmond only)

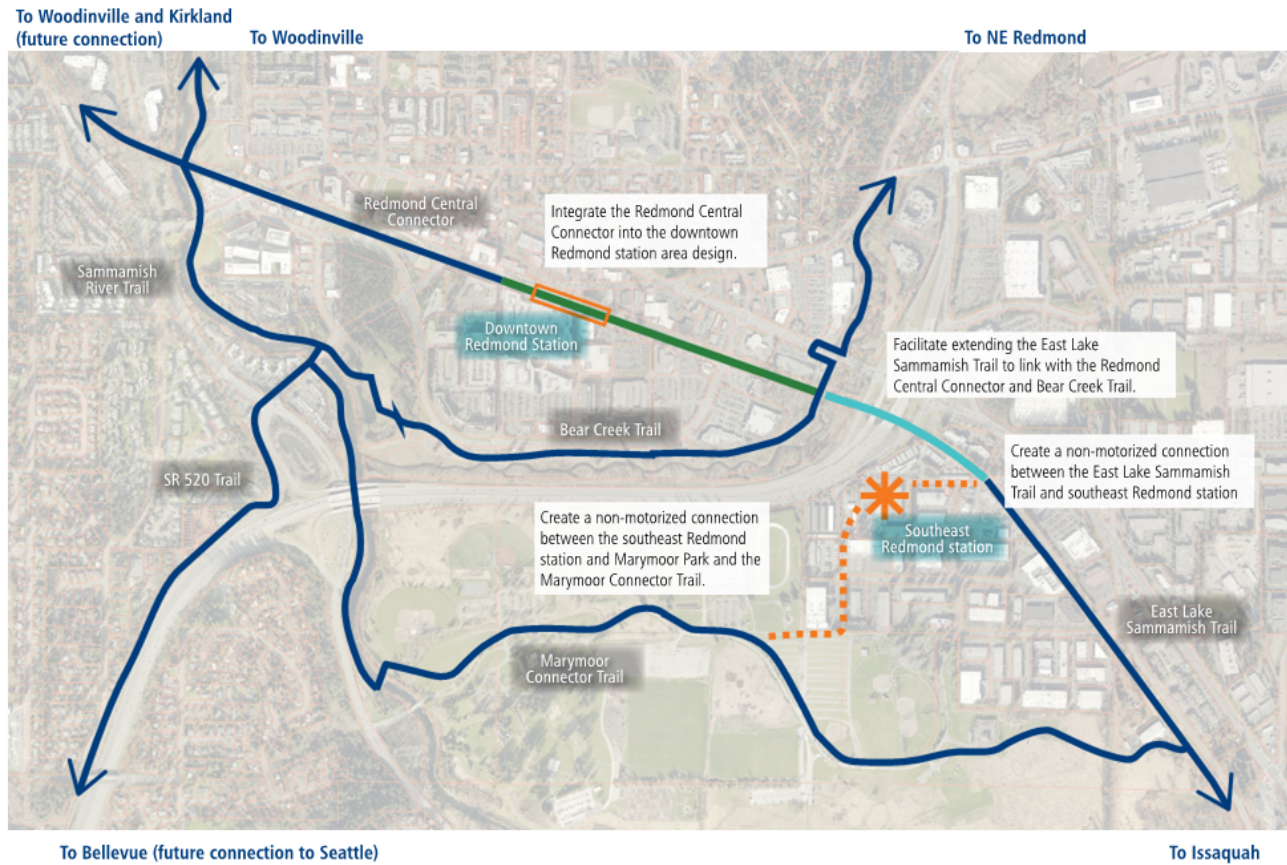
Tell us what you think!
Take our survey



STart



Potential trail connections



Stay informed

Schedule a briefing with Sound Transit Community Outreach for yourself, neighborhood group or business.

- Phone/email: 206.398.LINK, redmondlink@soundtransit.org
- 24-hr construction hotline: 1.888.298.2395
- **Sign up for construction alerts:**
www.soundtransit.org/subscribe





 **SOUNDTRANSIT**
RIDE THE WAVE

