



 **SOUNDTRANSIT**

# East Link Extension

Mercer Island Station

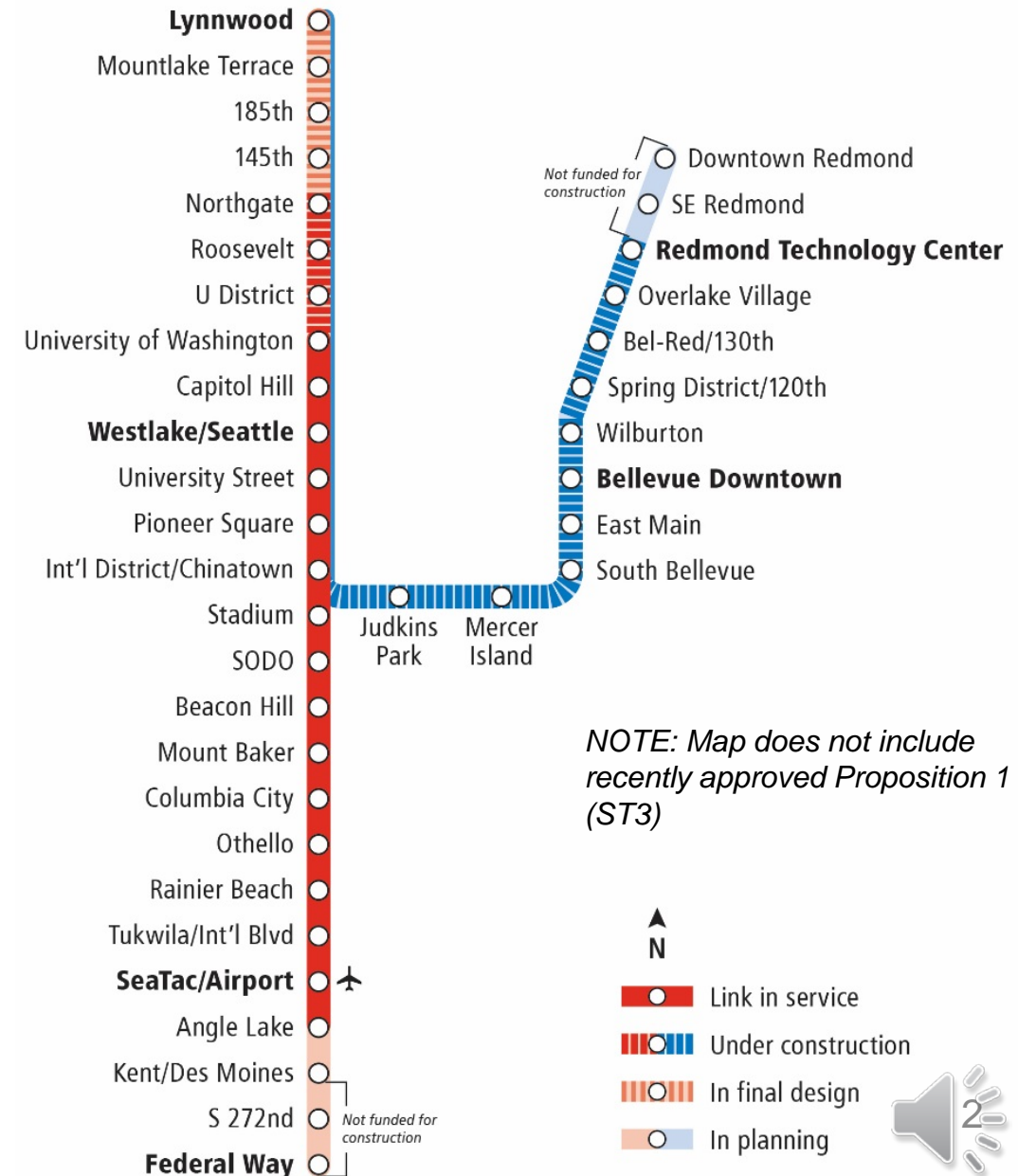
Open House

November 2016



# Link light rail system

- 19 miles of light rail with 16 stations currently in service
- University Link and Angle Lake opened in 2016
- ST2 Plan funded extensions to Overlake, South King County, and Lynnwood
- 50+ mile system



# East Link overview

Length: 14 miles

## Ride times from Mercer Island:

- International District / Chinatown: 10 min
- University of Washington = 20 min
- Overlake Transit Center = 20 min
- SeaTac Airport = 45 min (with transfer at International District)

Rider projection: 50,000 daily riders by 2030

Budget: \$3.7 billion (YOE \$)

Start of Service: Targeted 2023



# East Link timeline & recent progress



# I-90: Construction

- Sound Transit is working with WSDOT to provide full-time HOV lanes in the outer roadways, in preparation for light rail in the center roadway
- The center roadway closes and East Link construction begins June 2017
- Mercer Island station construction begins mid-2017



Updated: October 20, 2016

## East Link Construction Timeline\*

\*Schedule subject to change

	2016				2017				2018				2019				2020				2021				2022				2023							
	Q1	Q2	Q3	Q4	Q1	Q2	Q3	Q4	Q1	Q2	Q3	Q4	Q1	Q2	Q3	Q4	Q1	Q2	Q3	Q4	Q1	Q2	Q3	Q4	Q1	Q2	Q3	Q4	Q1	Q2	Q3	Q4				
I-90 Two-way Transit	█				█				█				█				█				█				█				█				█			
I-90 Center Roadway Construction					█				█				█				█				█				█				█				█			
Mercer Island Station Construction					█				█				█				█				█				█				█				█			
East Link: Bellevue to Redmond Construction	█				█				█				█				█				█				█				█				█			
I-90 / Integrated Testing Startup																									█				█							
EastLink Service Begins																																	█			



# What we've heard



## Key Themes:

- Station design
- Noise from I-90
- Landscaping

## Public Involvement:

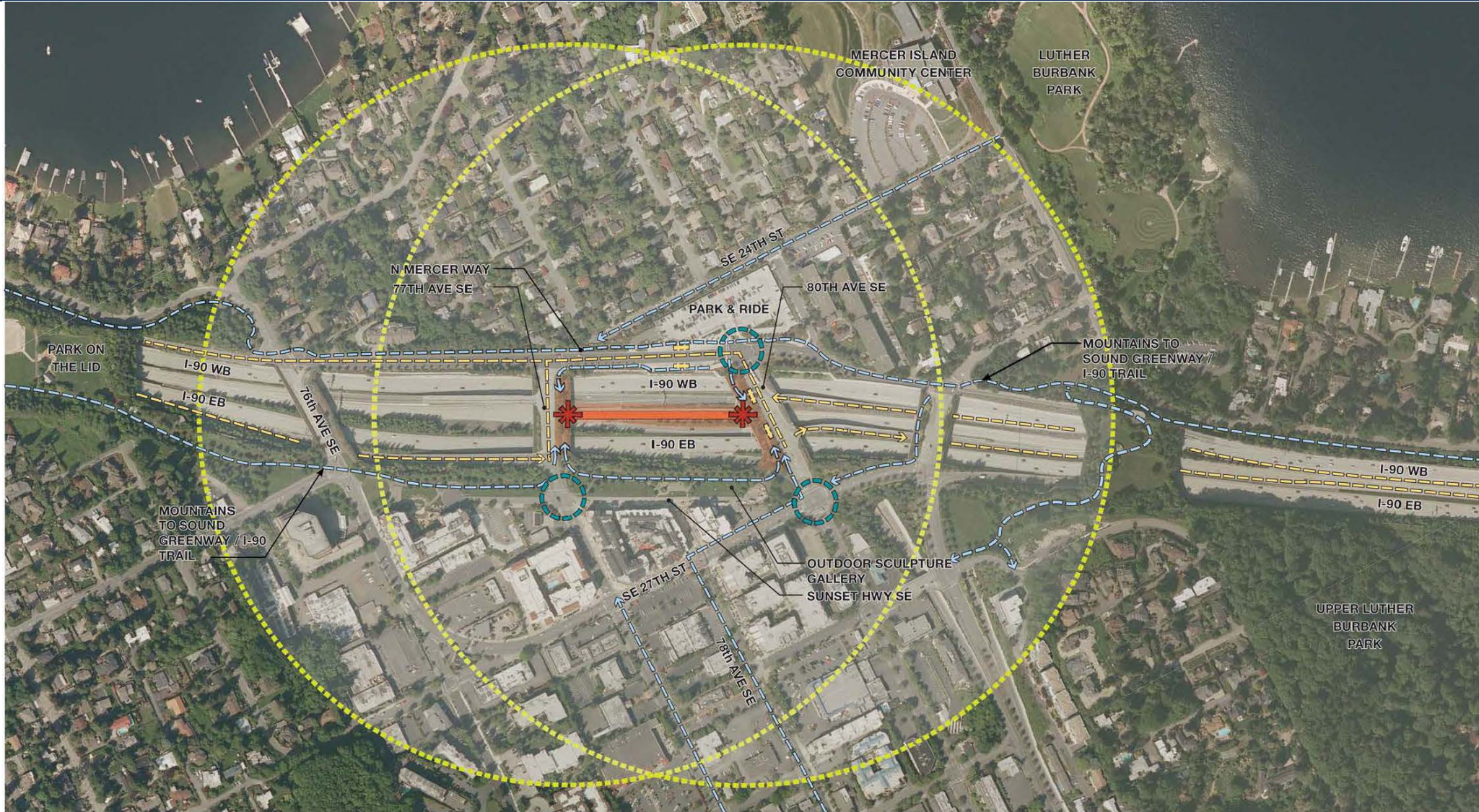
- Environmental open houses
- 30% & 60% design open houses
- Project briefings
- Mercer Island & Integrated Transit open house
- Mercer Island Listening Tour
- Mercer Island Advisory Group
- Drop-in sessions
- Presence at Mercer Island Summer Celebration and Farmer's Market





# Mercer Island Station

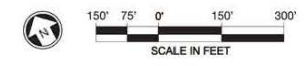


# Contextual Plan



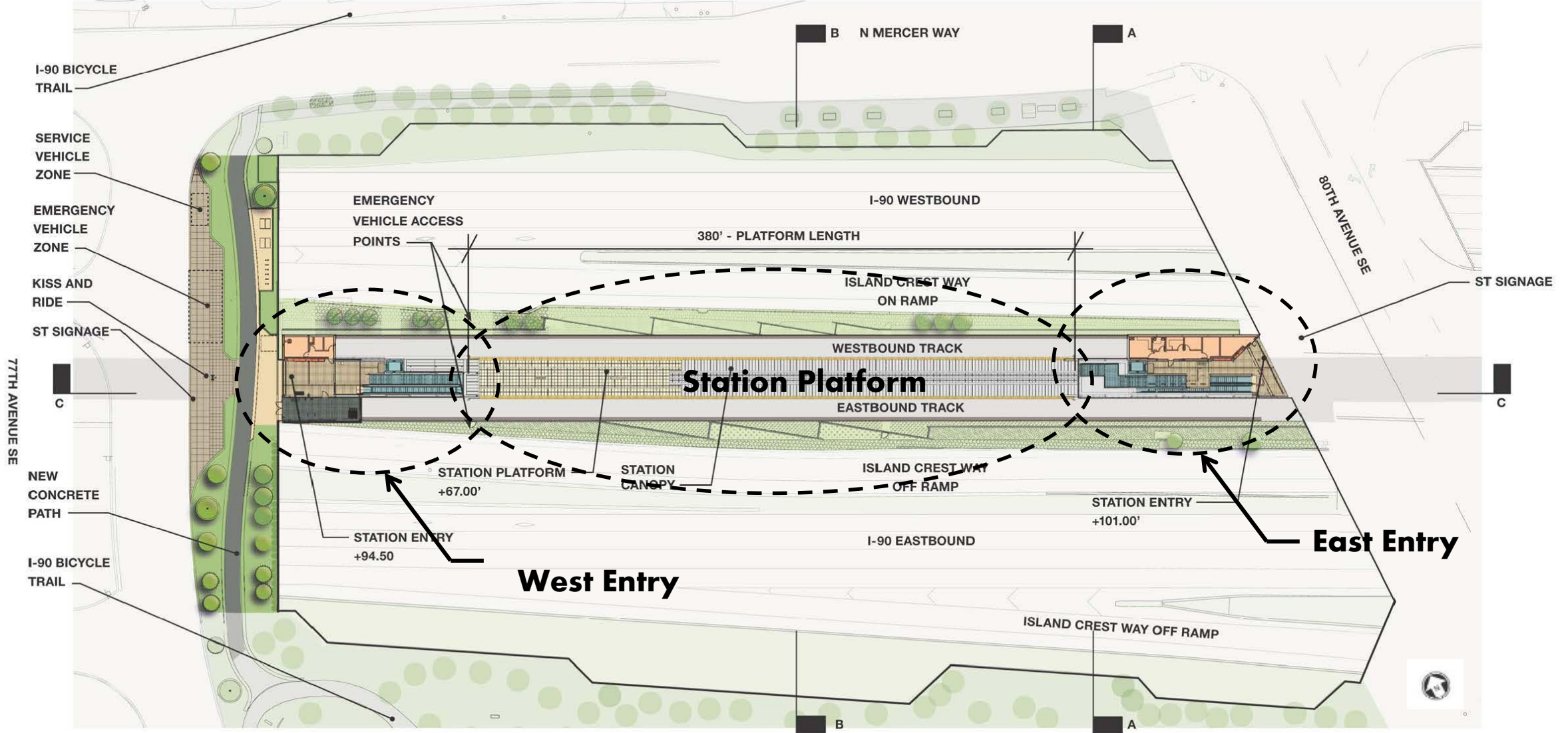
**LEGEND**

-  Pedestrian / Bicycle Route
-  Potential Bus Route
-  Potential Bus Stop
-  Project Extent
-  Station Platform
-  Station Entrance
-  Major Intersection
-  1/4 Mile Radius from Entrances

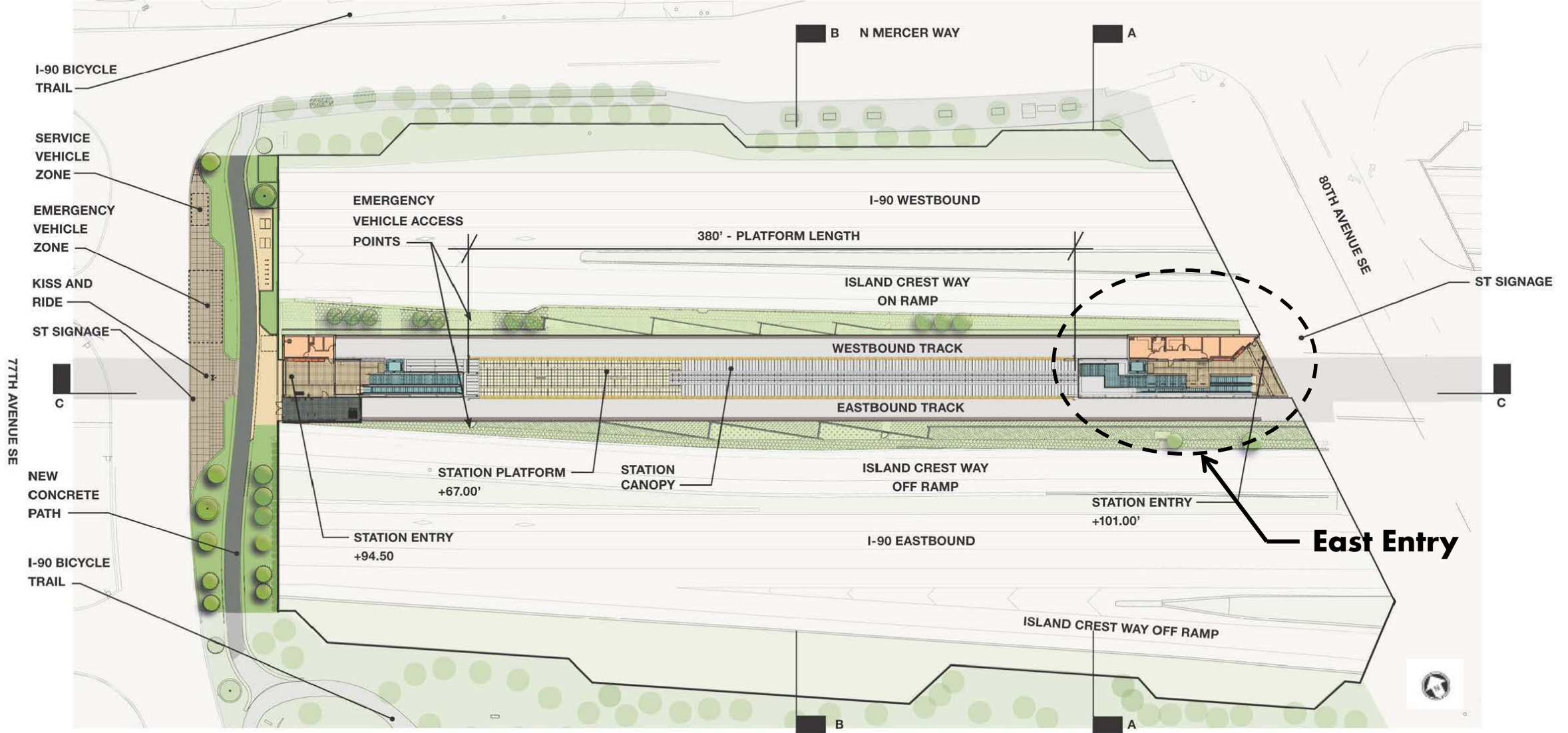




# Site Plan



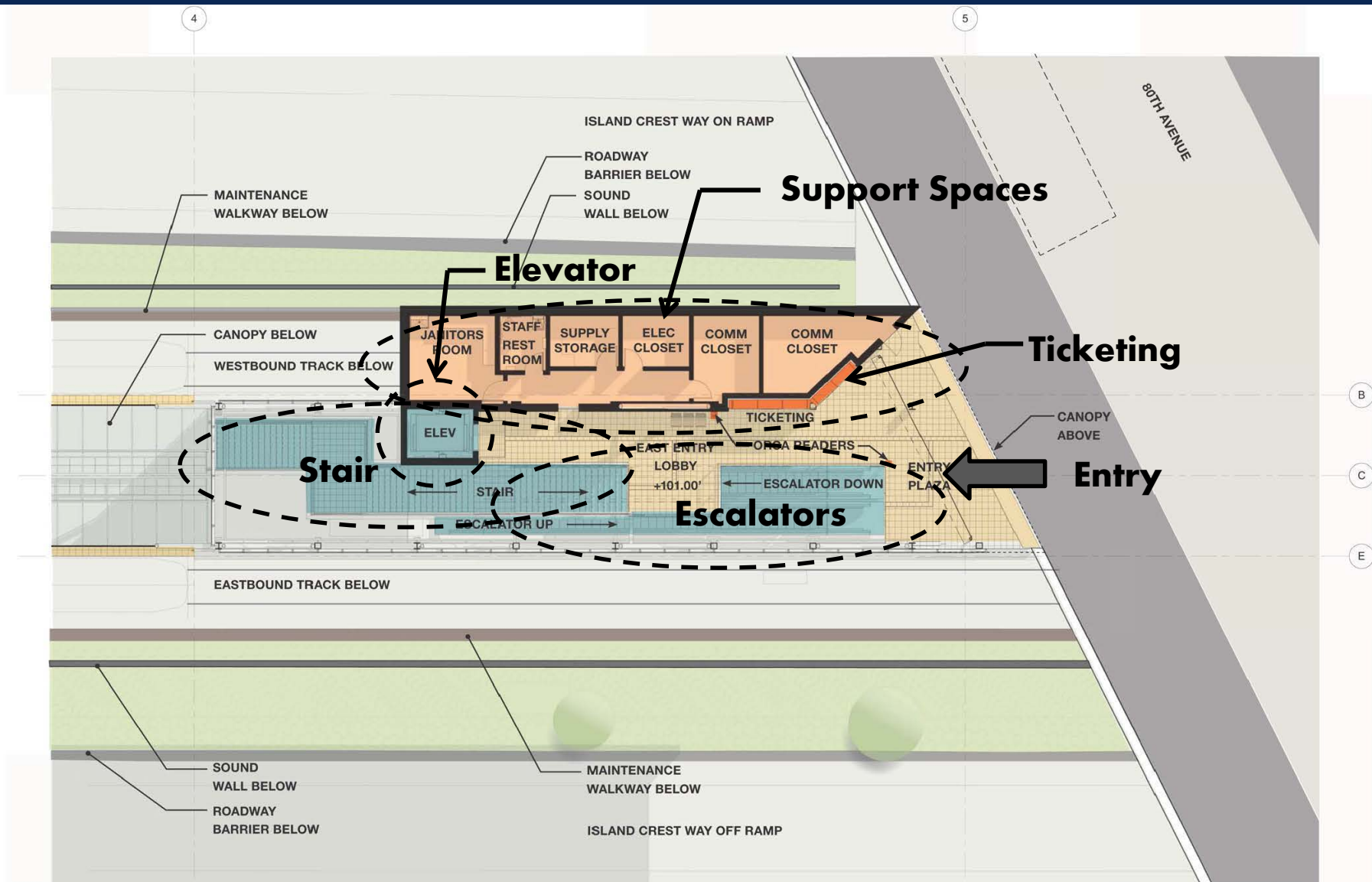
# Site Plan



# East Headhouse Perspective at 80th Avenue

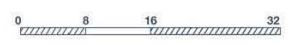


# East Headhouse Plan



LEGEND

<span style="display:inline-block; width:15px; height:15px; background-color: #f4a460; border: 1px solid black;"></span> Ancillary Rooms	<span style="display:inline-block; width:15px; height:15px; background-color: #e6e6e6; border: 1px solid black;"></span> Platform	<span style="display:inline-block; width:15px; height:15px; background-color: #d9ead3; border: 1px solid black;"></span> Station Entry
<span style="display:inline-block; width:15px; height:15px; background-color: #999999; border: 1px solid black;"></span> Bicycle Storage	<span style="display:inline-block; width:15px; height:15px; background-color: #a6c9ec; border: 1px solid black;"></span> Patron Circulation	<span style="display:inline-block; width:15px; height:15px; background-color: #f46d43; border: 1px solid black;"></span> Ticketing



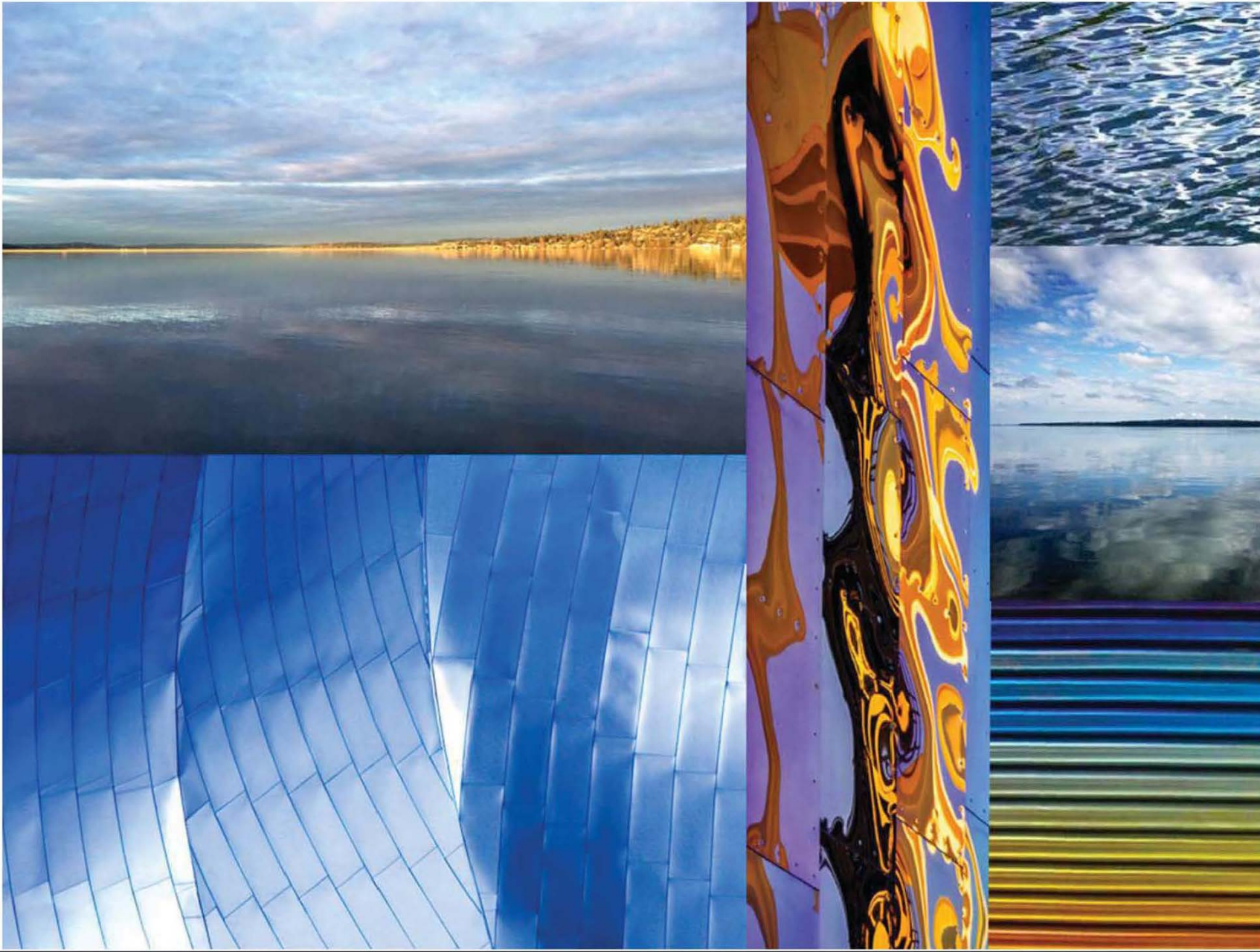
# East Headhouse looking down stairs



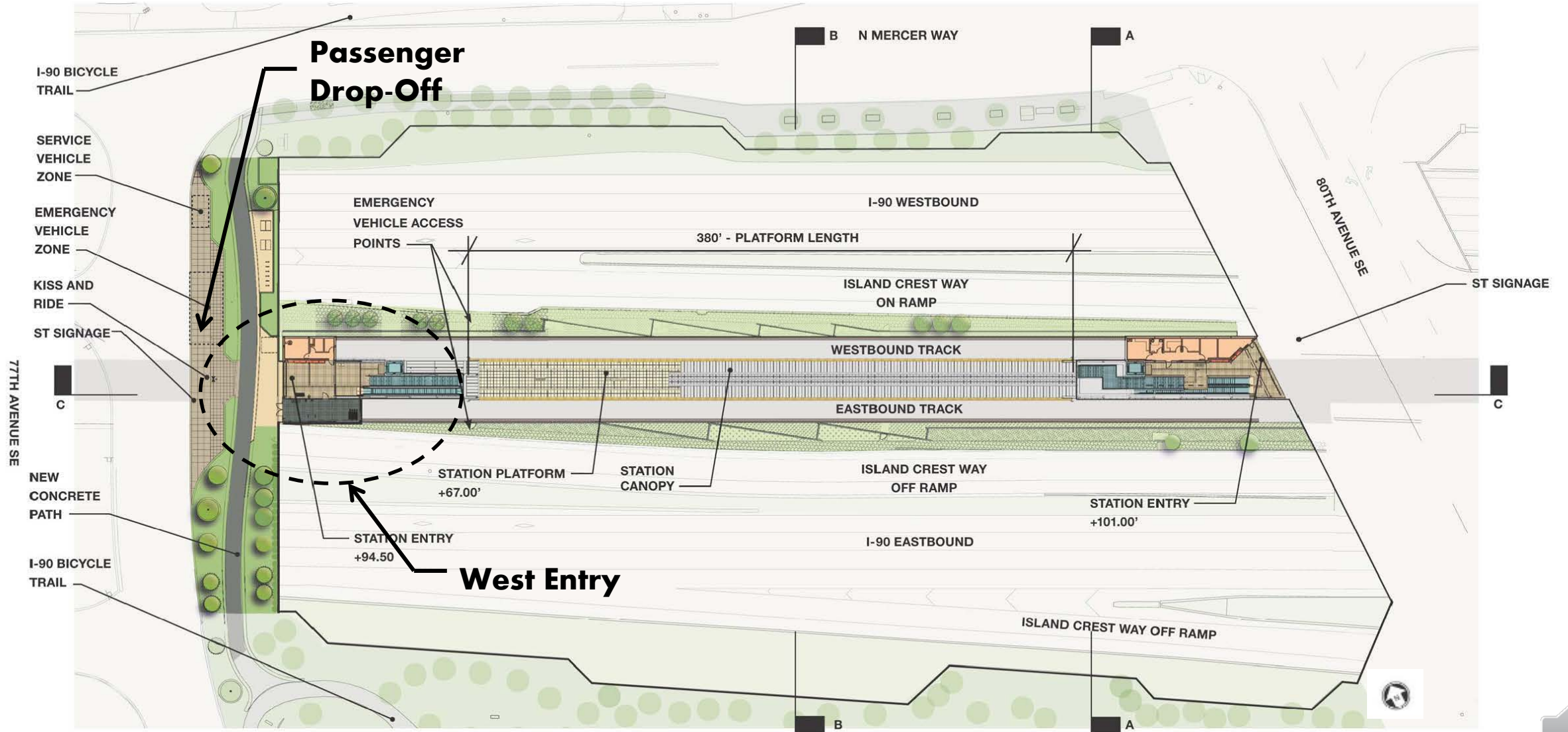
# East Headhouse looking up stairs



# East Headhouse Art Inspiration



# Site Plan

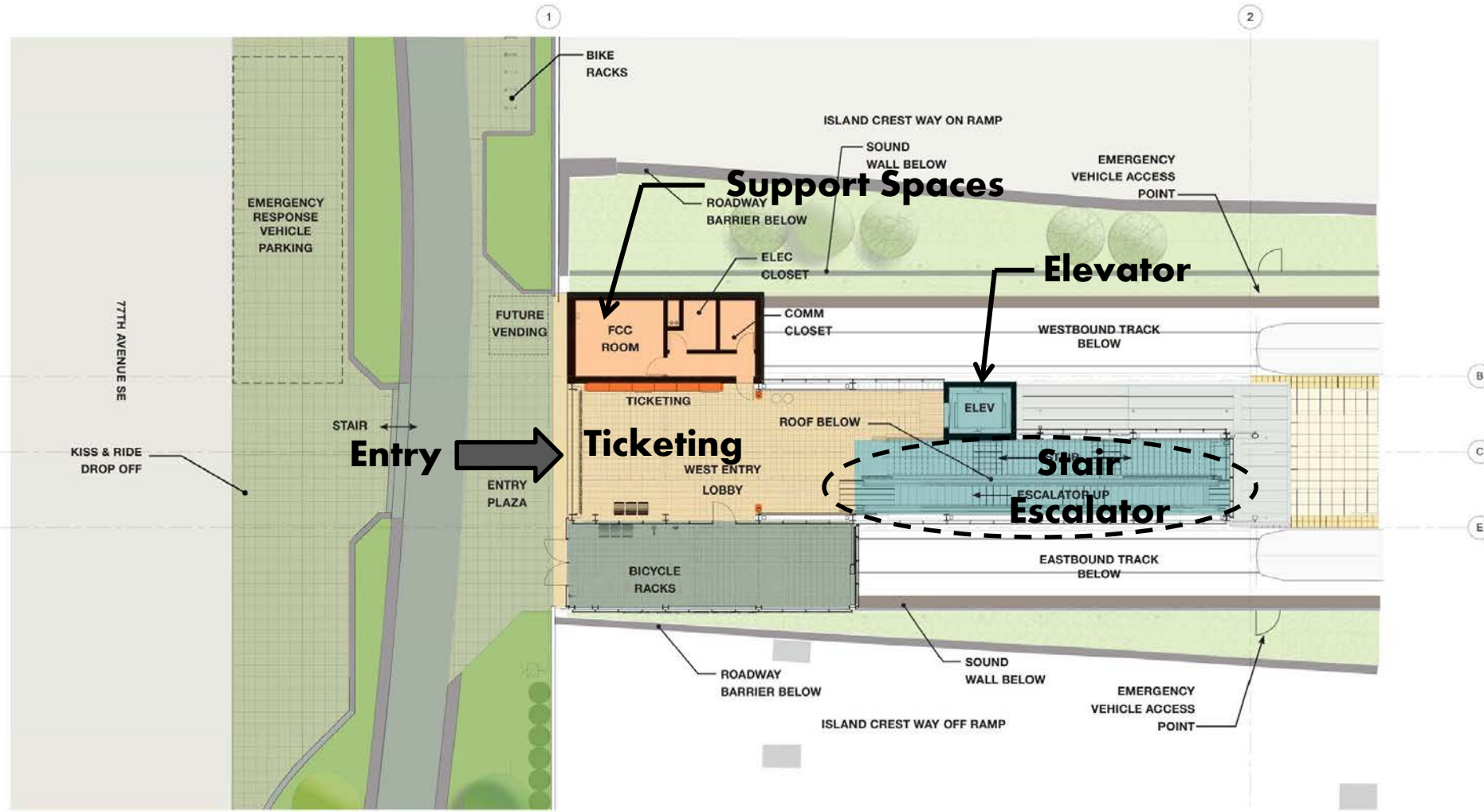




# West Headhouse Perspective at 77th Avenue



# West Headhouse Plan



KEY MAP

<span style="display:inline-block; width:15px; height:15px; background-color:orange;"></span> Ancillary Rooms	<span style="display:inline-block; width:15px; height:15px; background-color:yellow;"></span> Platform	<span style="display:inline-block; width:15px; height:15px; background-color:lightblue;"></span> Station Entry
<span style="display:inline-block; width:15px; height:15px; background-color:lightgreen;"></span> Bicycle Storage	<span style="display:inline-block; width:15px; height:15px; background-color:teal;"></span> Patron Circulation	<span style="display:inline-block; width:15px; height:15px; background-color:lightorange;"></span> Ticketing

LEGEND



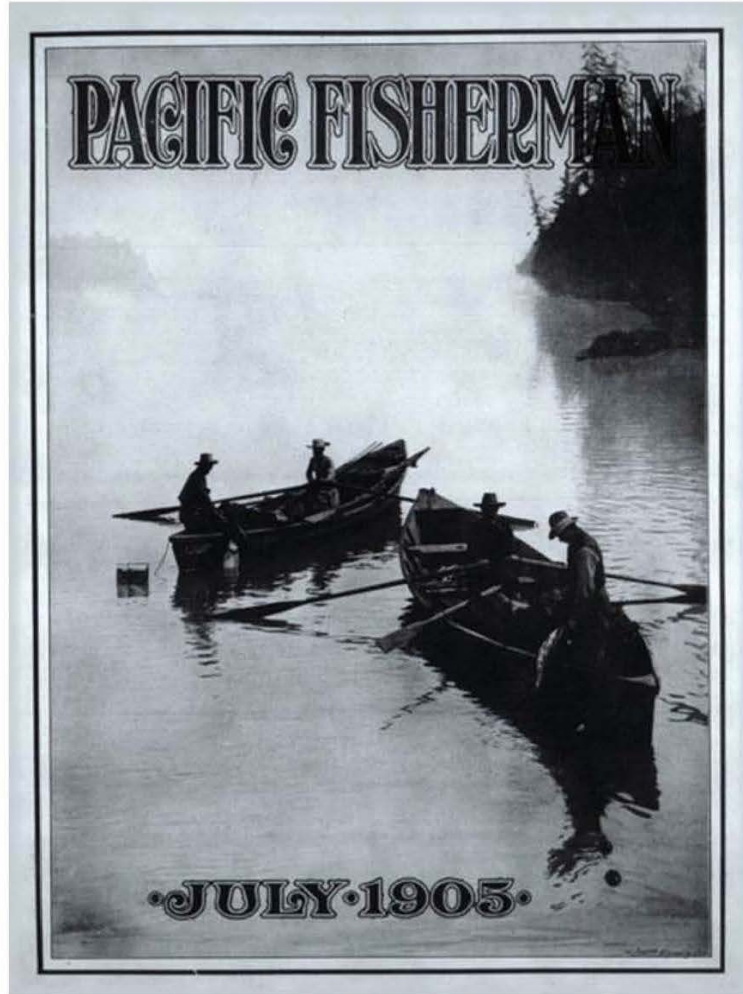
# West Headhouse looking down stairs



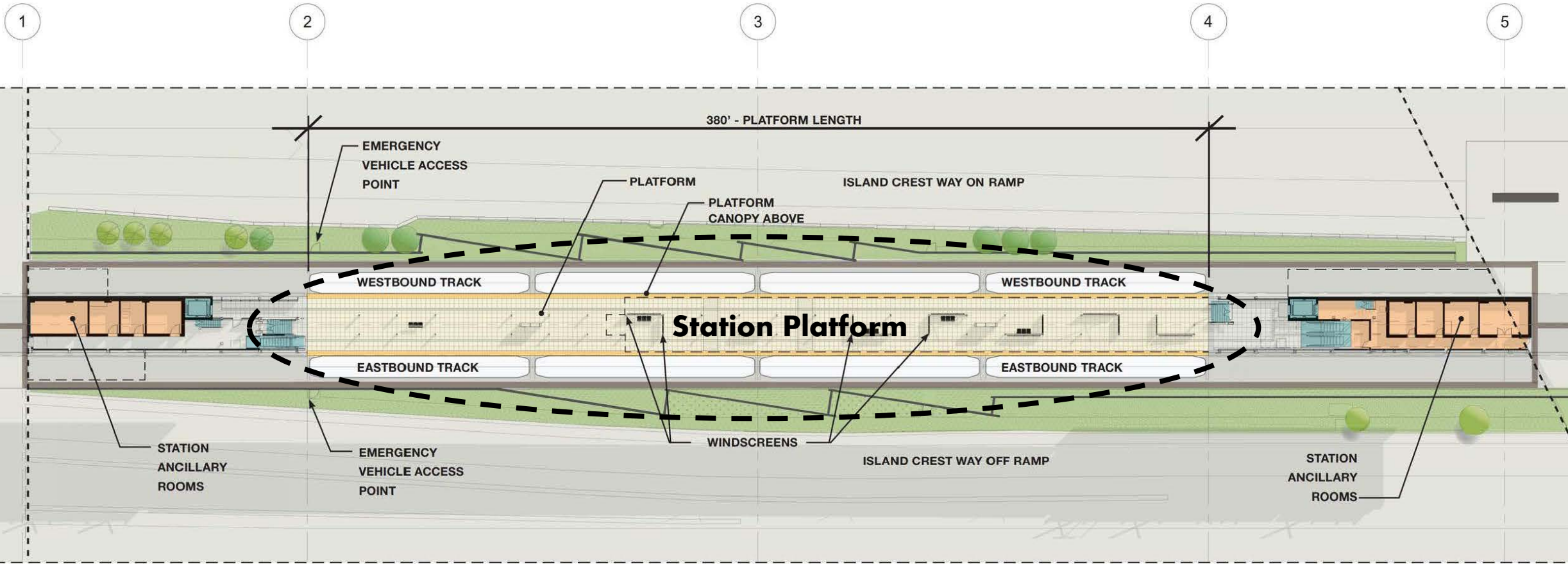
# West Headhouse looking up stairs



# West Headhouse artwork inspiration

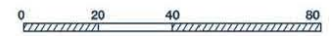


# Platform plan



	Ancillary Rooms		Platform		Station Entry
	Bicycle Storage		Patron Circulation		

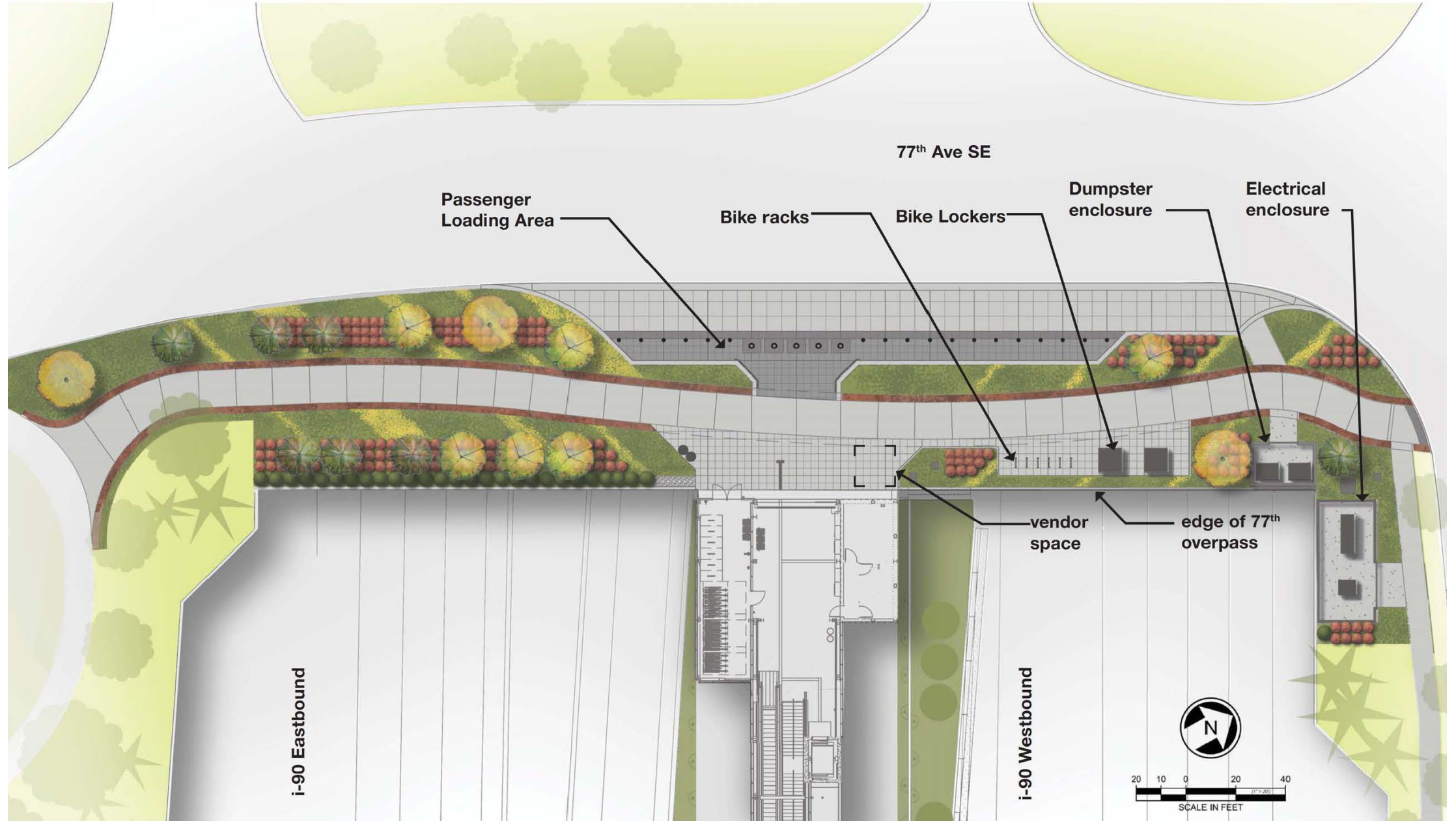
LEGEND



# Perspective of platform canopy – looking east

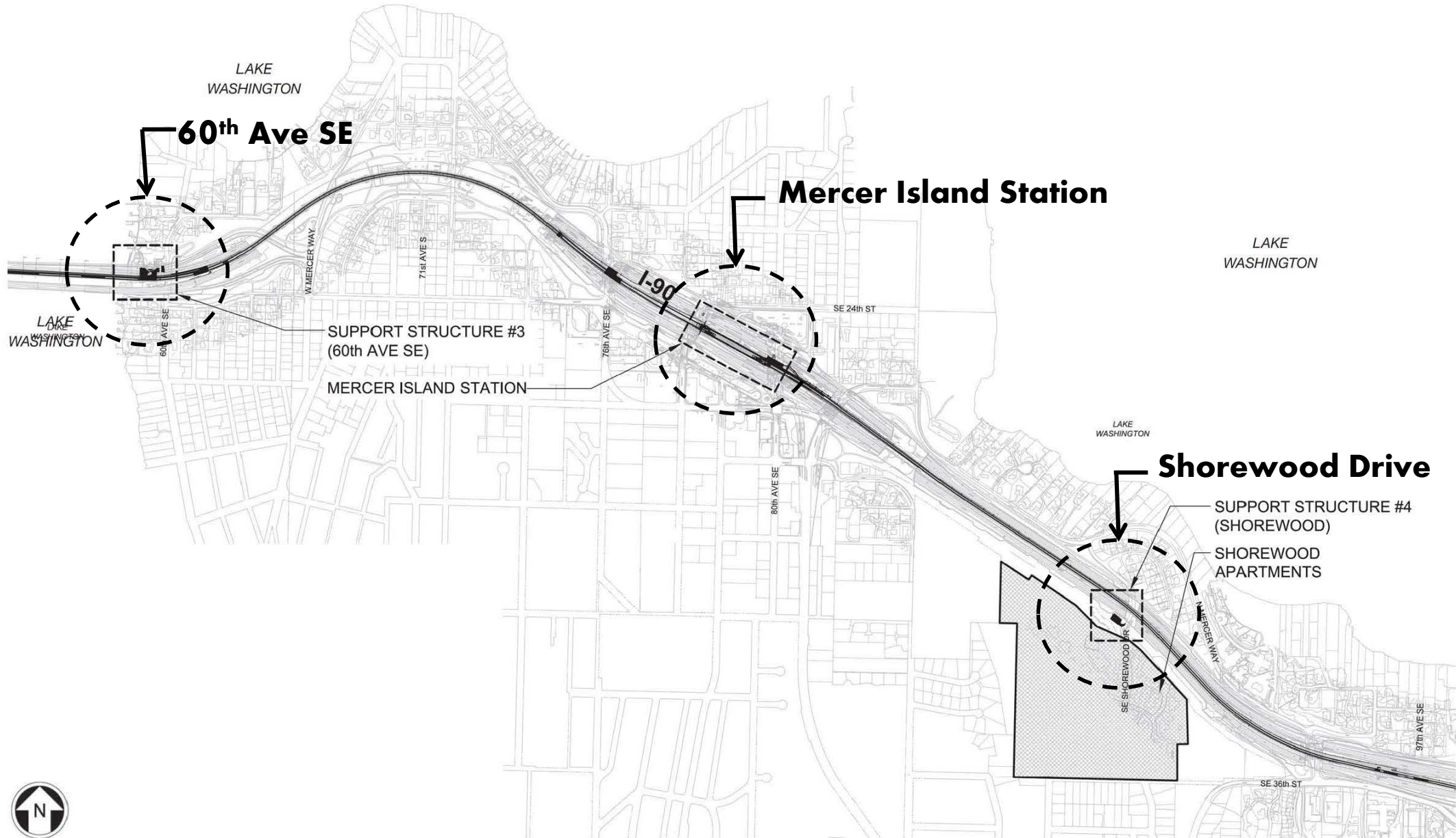


# Mercer Island Station – 77th Ave Entry Landscape Plan





# Supporting Structures



What's next?



# Upcoming Construction

- **Spring 2017**
  - Meet the Contractor Open House
- **June 2017**
  - I-90 Two-way Transit Project Complete
  - HOV lanes open in the outer roadway
- **Mid-2017**
  - Mercer Island Station Construction



# Stay in touch

- Contact Community Outreach staff:  
[zack.ambrose@soundtransit.org](mailto:zack.ambrose@soundtransit.org)  
or 206-903-7176
- 24 hour construction hotline: 888-298-2395
- Sign-up to receive email updates:  
[www.soundtransit.org/subscribe](http://www.soundtransit.org/subscribe)

**Visit the project website:**  
[www.soundtransit.org/eastlink](http://www.soundtransit.org/eastlink)



The image shows the exterior of a white Sound Transit train. The train has a blue logo consisting of a stylized 'S' and 'T' followed by the text 'SOUNDTRANSIT' in blue capital letters. Below the logo, there are several windows with dark frames. A decorative graphic at the bottom of the train features wavy lines in shades of teal and dark blue. A semi-transparent grey bar is overlaid across the middle of the image, containing the text 'Thank You' in white.

**SOUNDTRANSIT**

**Thank You**