



**Sound Transit Board
East Link Extension Update
March 24, 2016**

Today's Agenda

- Financial Snapshot
- Schedule
- Key Activities
- Issues and Challenges

I-90 Two-Way Transit & HOV Operations (Stage 3)

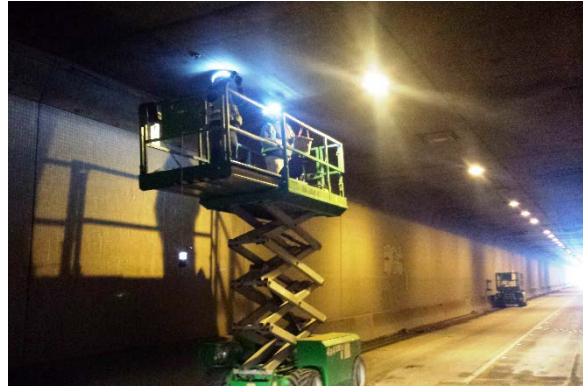


Project Budget	\$225.6 M
Committed	\$187.9 M
Incurred	\$80.9 M

Notes: Financials as of February 2016.

Key Project Activities

- SCADA equipment Installation and interface programming
- Installation of plenum lighting, control room, fans, emergency lighting.



East Link Overview

Length: 14 miles

Stations: 10 Stations

Ride times:

- Mercer Island to UW Approximately: 20 min.
- S. Bellevue to Airport Approximately: 50 min.
- Overlake Transit Center to Bellevue Transit Center Approximately: 10 min.

Rider projection: 50,000 daily by 2030

Estimated Cost: \$3.6 billion (YOE \$)

Revenue Service: June 2023



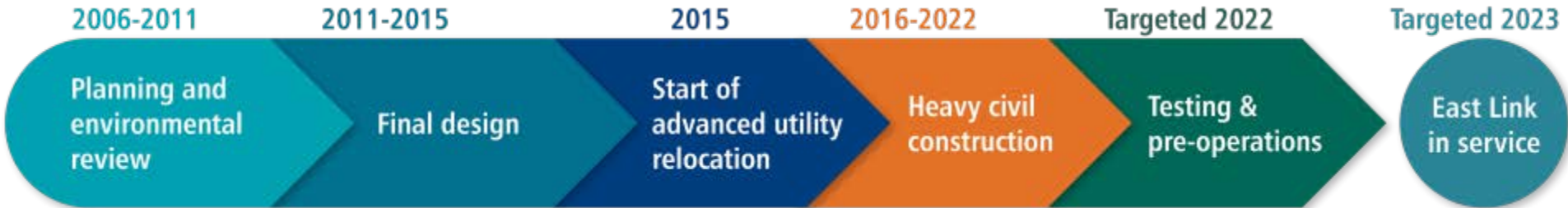
East Link Financial Snapshot

Project Budget	\$3,677.2 M
Committed	\$645.3 M
Incurred	\$420.8 M

Notes: Financials as of February 2016.

- Final Design Contracts Awarded \$220.5 M
- Property Acquisition \$140.4 M
- Construction and Construction Management Contracts Awarded \$160.8 M

East Link Project Schedule Summary



Construction start dates by segment:

**subject to change as construction contracts are awarded*

- I-90 Corridor: mid 2017
- South Bellevue: late 2016
- Downtown Bellevue Tunnel: early 2016
- S. Main to Spring District: mid 2017
- Bel-Red: early 2017
- SR-520: mid 2016
- Systems: late 2019

East Link Extension Contract Package Status

East Link Extension Segments	Construction Management	Construction
I-90 Corridor	✓	✓ (Pre-Con)
South Bellevue	✓	Q2 2016 Procurement
Downtown Bellevue Tunnel	✓	✓
South Main St. – Spring District	✓	✓ (Pre-Con)
Bel-Red Corridor	✓	Q2 2016 Procurement
SR-520	✓ (Pre-Con)	✓ (Pre-Con)
Systems	✓ (Pre-Con)	✓ (Pre-Con)

✓Contract Awarded

I-90 Corridor Key Activities

- 90% Systems Design completed
- Civil Design advancing to 90% (June deliverable)
- Independent Review Team (IRT) Issue Resolution
 - 23 issues identified
 - 22 closed to date with WSDOT
- Advanced track attachment testing
- Constructability review by contractor
- Construction schedule under development
- Continued close coordination with WSDOT
- Continued engagement with Mercer Island on access issues



Bellevue – Redmond Corridor Key Activities

- Balance of Civil Design Packages advancing toward 100%
- Land Use, Environmental, and Construction Permitting
- Property Acquisition, Relocation and early utility work
- Bellevue Downtown Tunnel construction contract awarded
- Construction collaboration with City of Bellevue
- Final phase of Design-Build procurement underway
- Construction field office occupied
- Pre-construction outreach to neighborhoods and communities
- Co-sponsored TOD challenge with students from UW, Portland State, University of British Columbia
- Construction ground breaking planning is underway

East Link Groundbreaking

Groundbreaking – April 22, 2016

11:00 a.m.

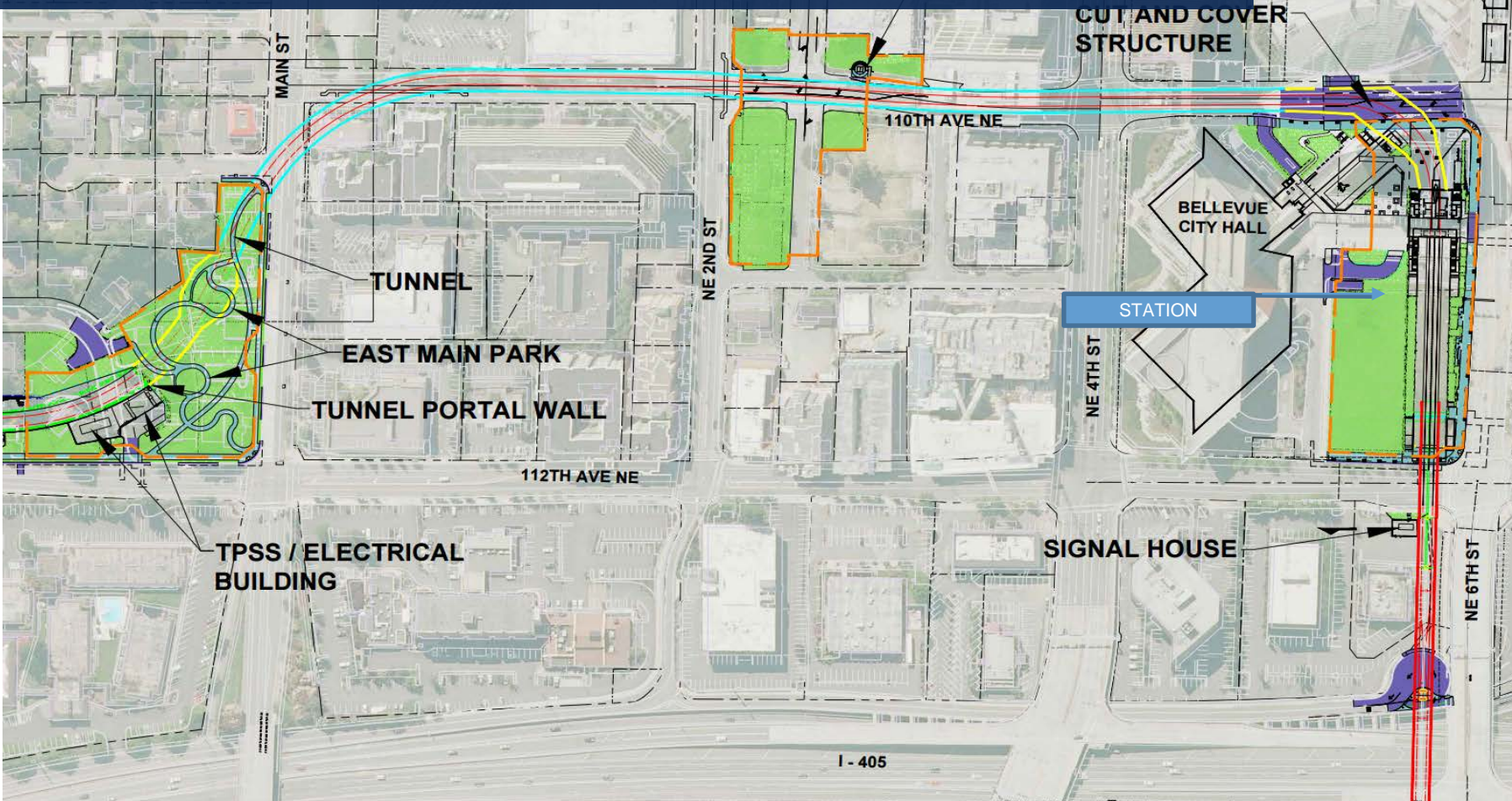
11024 NE 2nd Street, downtown Bellevue



East Link Groundbreaking Event
110th Ave NE & NE 2nd Pl, Bellevue

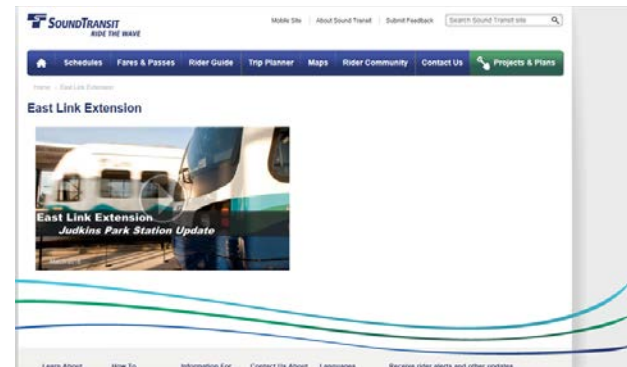


Downtown Tunnel & Bellevue Downtown Station



Community Outreach Activities

- Preparing downtown Bellevue/Surrey Downs communities for construction
 - Construction alerts
 - Door to Door notices
 - Social media campaign – sign up for alerts
 - Downtown construction coordination roundtable meeting: March 29, 2016
- Judkins Park Station –preparing for completion of final design
 - Narrated presentation on website
 - Individual briefings
- Bel-Red Business Relations
 - Individual briefings
 - Customer loyalty program procurement in process



Key Issues & Challenges

- R8A Stage 3 progress
- Maintaining property acquisition and relocation schedule
- Timely completion of early utility relocation
- Timely submission and issuance of permits; resolution of permit appeals
- Resolution of access, mobility and parking issues on Mercer Island
- Maintaining construction procurement schedule and competition

Questions?

