



Sounder Yard and Shops Project

ST Board

May 26, 2016

 **SOUNDTRANSIT**

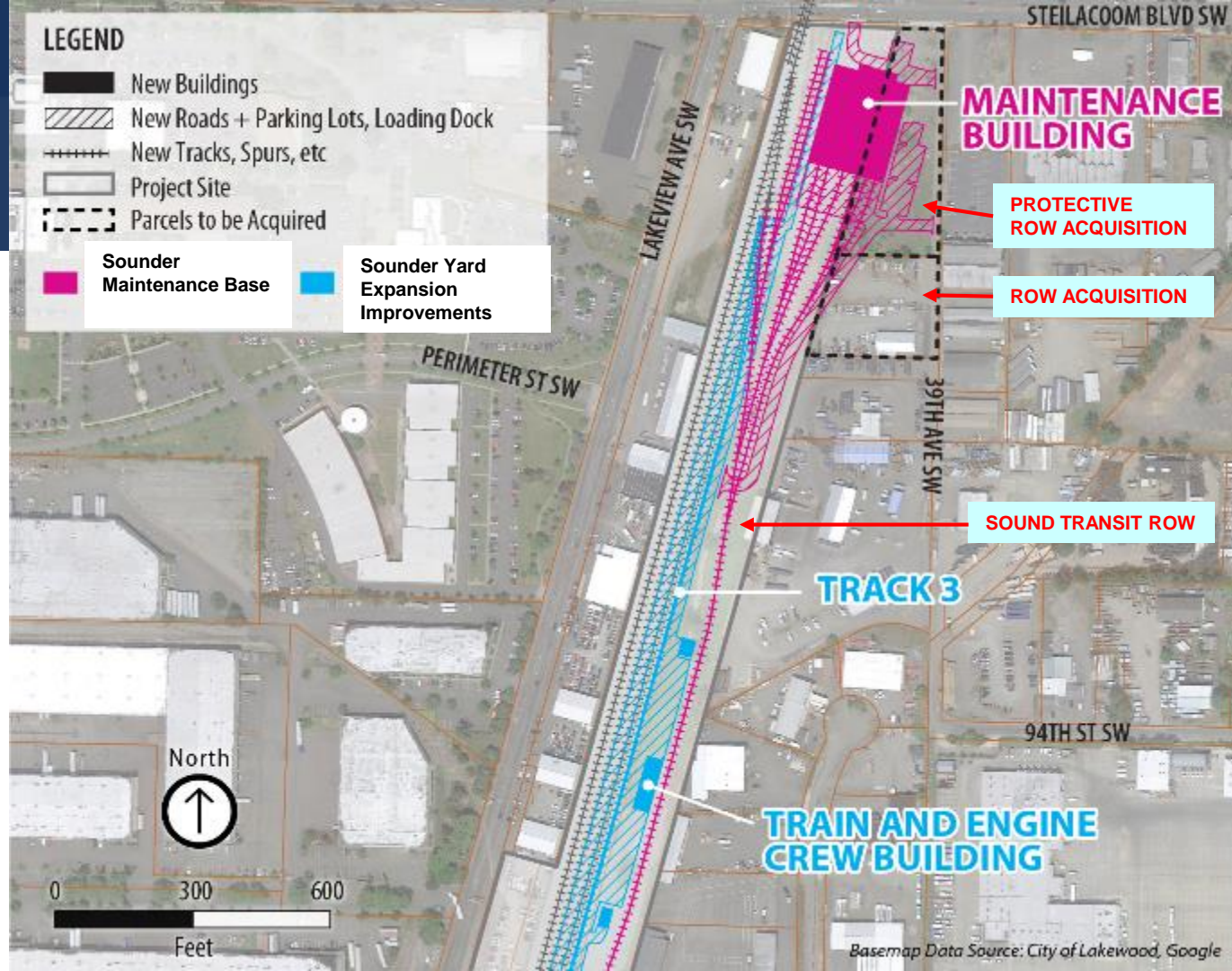
Maintenance Base Requirements

- Close proximity and access to mainline railroad right of way
- Project site that could accommodate the Sounder fleet and its facilities with modest growth
- Affordability



Preferred Site in Lakewood, WA

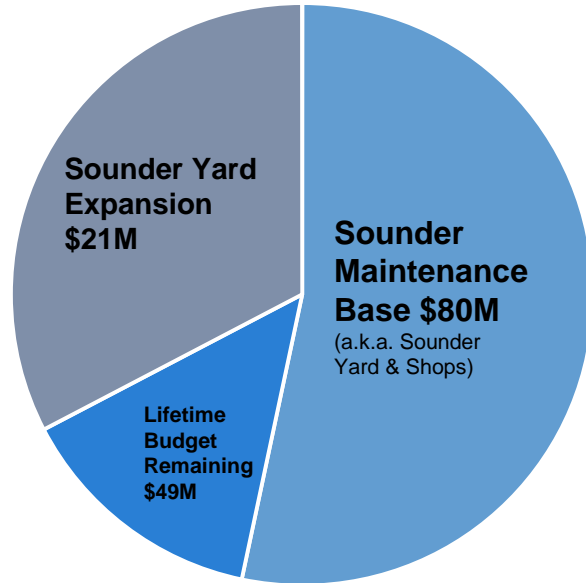
- Property owned by Sound Transit
- Compatible to Land Use Zoning in area
- Cost Effective
- Sounder Yard Expansion begins construction in 2016



The image features a dark grey horizontal banner across the center. On the left side of the banner is the Sound Transit logo, which consists of a stylized white 'S' and 'T' combined into a single symbol. To the right of the logo, the words 'SOUNDTRANSIT' are written in a bold, white, sans-serif font. Below 'SOUNDTRANSIT', the slogan 'RIDE THE WAVE' is written in a smaller, white, sans-serif font. The background of the entire image is a close-up of a transit vehicle, showing a white upper section with dark windows and a blue lower section with white wave-like graphics. The word 'SOUNDBUS' is partially visible in large white letters on the blue section at the bottom.

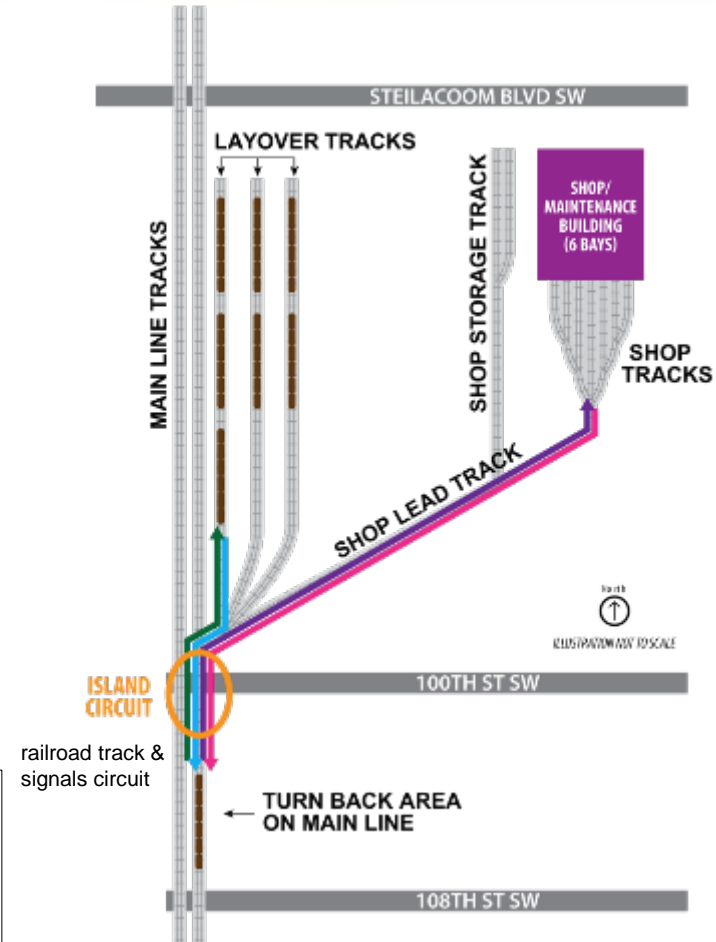
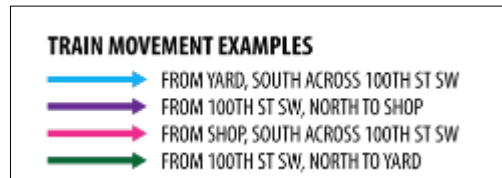
SOUNDTRANSIT
RIDE THE WAVE

\$150M Sounder Yard & Shops ST2 Finance Plan (\$2015)



Souder Yard and Shops Maintenance Operations

- Seven train sets to be stored at the facility.
- Night time maintenance crews to work between 8pm to 4am
- ST anticipates a maximum of 24 nighttime crossings of 100th Street SW per week, with a very conservative assumption of 12 per night, for purposes for environmental analyses



Environmental Review for Yard and Shops

- FTA issued NEPA approval in December 2015 for protective acquisition of the private parcel
- FTA issued NEPA approval in January 2016 for the Sounder Yard and Shops Facility Project
- SEPA Determination of Non Significance issued 3/25/16, public comment period ended 4/8/16
- Up to 16 moderate noise impacts to be reassessed in final design and mitigated

