



**Sound Transit Board
East Link Extension Update
November 29, 2016**

- I-90 Two-Way Transit & HOV (R8A Stage 3)
 - Status
 - Challenges and Risks

- East Link Extension
 - Status
 - Key Activities
 - Challenges and Risks

Cost & Schedule Snapshot

- **Baselined:** May 2014
- **Budget:** \$225.6 Million (YOE)
- **Schedule:** Scheduled turnover of the center roadway (WSDOT to ST) – June 2017
- **Status:**
 - WSDOT administered contract
 - Project is within Budget
 - Construction approximately 73% complete
 - Schedule recovery underway



Construction Status

- Civil construction throughout corridor
- Electrical, SCADA, and mechanical work in both Mercer Island and Mount Baker Tunnels
- System software installation and testing

Challenges / Top Risks

- Maintain progress; ensure on time completion and turnover of center roadway to ST by June 2017
- Varying as-built conditions
- Systems integration
- Fan installations, testing and commissioning





Cost & Schedule Snapshot

- **Baselined:** April 2015
- **Budget:** \$3.67 Billion (YOE)
- **Schedule:** Revenue Service – June 2023
- **Status:**
 - Within Budget
 - On Schedule



Civil & Architectural Design

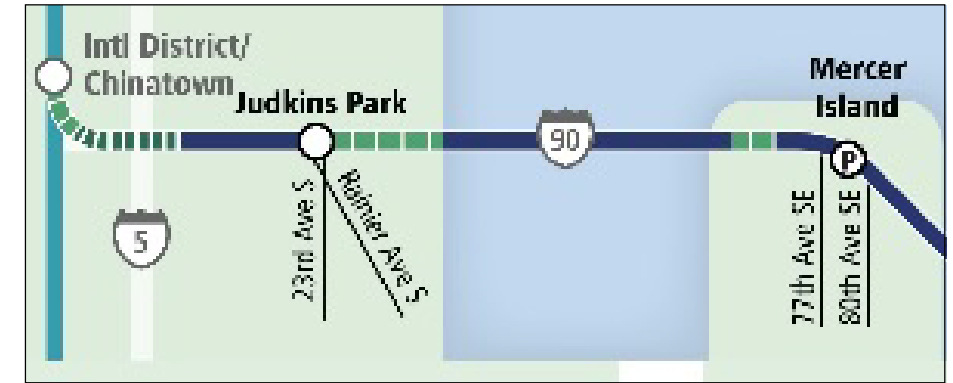
- Design reached 90% in July 2016
- GC/CM pricing set complete

Construction Management Consultant

- Awarded Pre-construction phase – Jacobs Engineering

Construction Contract

- 1 Heavy Civil GC/CM contract
- Awarded Seattle to South Bellevue [Pre-construction phase] – Kiewit-Hoffman Joint Venture
- Anticipate Seattle to South Bellevue construction contract to Board for consideration in Q1 2017



I-90 Segment - Key Activities

- Advanced track attachment field testing
- Constructability review by contractor
- Construction schedule development
- Continued close coordination with WSDOT
- Continued engagement with Mercer Island on access and parking issues
- Land Use, environmental and construction permitting
- ROW, temporary and permanent property rights, including Airspace Leases
- Judkins Park Station – completion of final design open house
- Early assessment of connection to International District/Chinatown Station
- Environmental Addendum



- SEPA Addendum provides additional environmental information regarding minor project refinements to the I-90 segment of East Link.
- Issuance: December 9, 2016. Notice to be mailed to all properties within 500 feet of I-90 alignment.
- No formal comment period

1

Refinements to Judkins Park Entrance



Enhance entrance by removing I-90 bus/flyer stop bridge and making pedestrian improvements

2

WSDOT areas: staging and construction



Mercer Island Boat Launch – Seismic improvements



Enatai Beach Park – Seismic improvements and project staging

3

Relocation of two Traction Power Substations in Seattle

Bellevue Segment - Status

Civil & Architectural Design

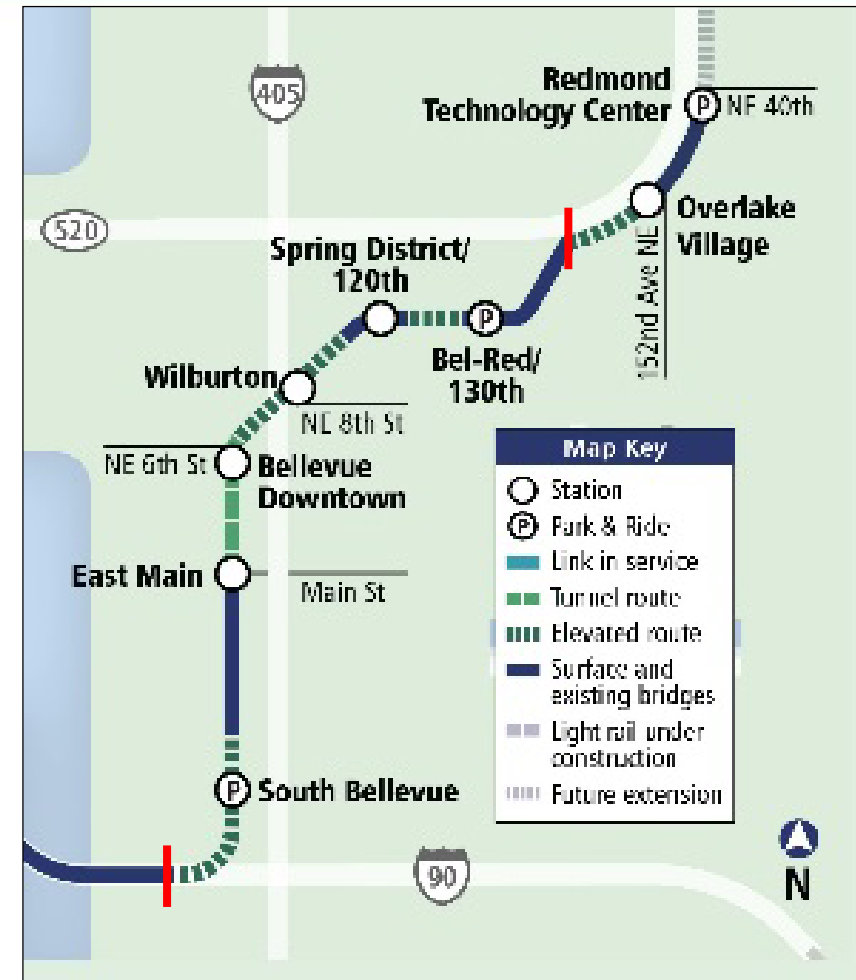
- All 4 design packages complete

Construction Management Consultant

- Bellevue CMC – HDR Engineering

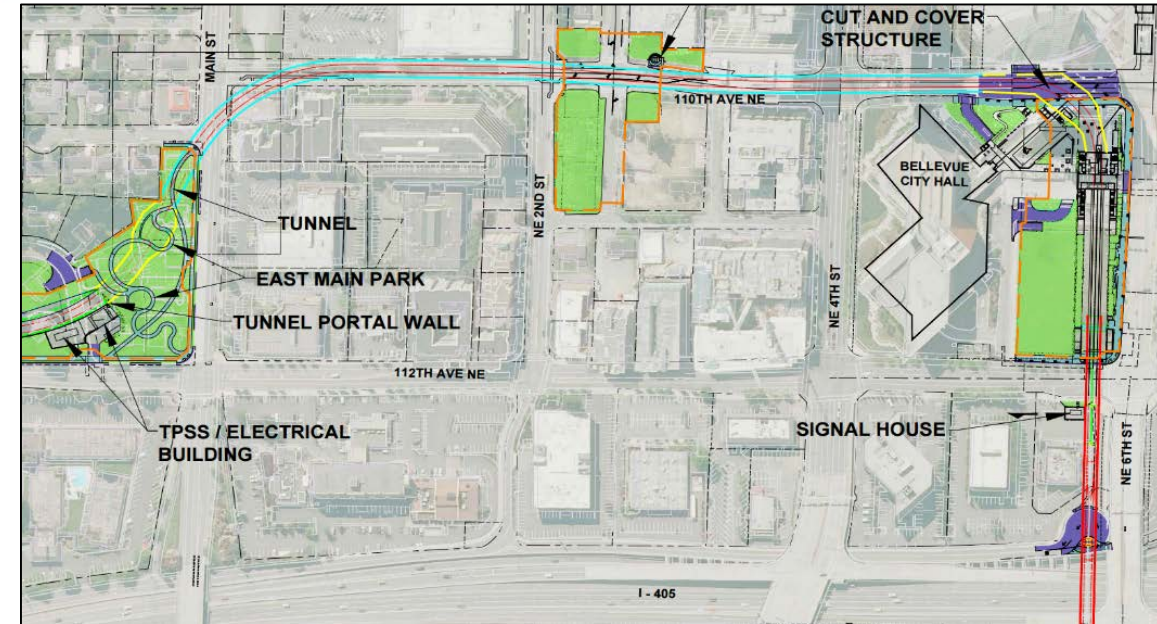
Construction Contracts

- South Bellevue award pending – Shimmick/Parsons, Joint Venture
- Downtown Bellevue Tunnel awarded – Atkinson Construction
- Downtown Bellevue to Spring District [Pre-construction phase] – Stacy-Witbeck-Atkinson
- Bel-Red bid opening December 6, 2016



Current Status

- Work is approximately 16% complete
- Sound wall shafts and panels installed
- Utility relocations
- Controlled Low Strength Material (CLSM) work at the North Portal
- Tunneling scheduled to start January 2017



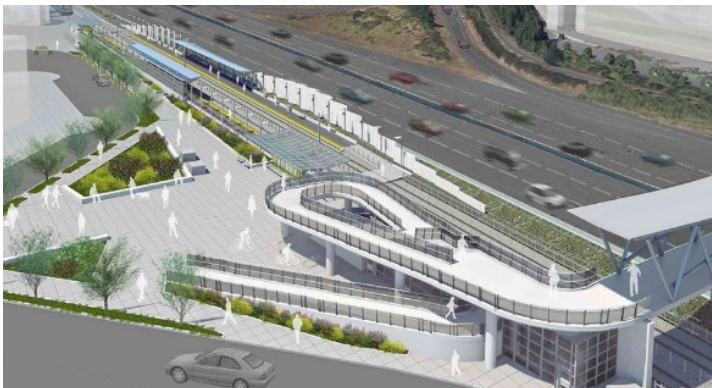
SR-520 Segment - Status

Design-Build Contract

- Awarded Design-Build contract – Kiewit-Hoffman, Joint Venture
- Notice to Proceed issued 7/13/2016
- Design advancing to 60%

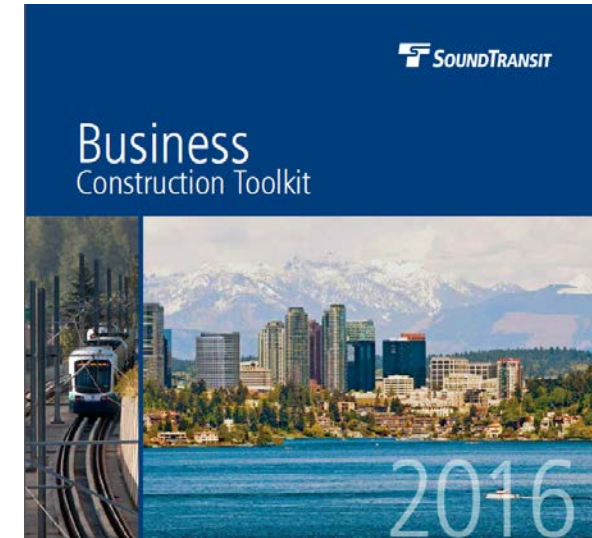
Design-Build Project Management

- Awarded to Hill International



Other Key Activities – Bellevue/Redmond

- Land Use, Environmental, and Construction Permitting
- Property Acquisition, Relocation and Utility work
- Construction collaboration with Bellevue, Redmond, WSDOT, King County Metro
- Upcoming S. Bellevue Park & Ride closure, leased lots opening, bus route additions / modifications implemented
- Keeping downtown Bellevue community informed during construction and start of tunneling activities
- Bel-Red business relations
- Design open house in Redmond



Heavy Civil GC/CM contract package

- Design reached 100%

Construction Management Consultant

- Awarded Systems CMC (Pre-construction phase) – Joint Venture of Mott MacDonald and STV

Construction Contract

- Systems (combined with Northgate Link) – Mass Electric
- Anticipate contract to Board for consideration in early 2017

East Link – Key Issues & Challenges

- Maintaining property acquisition and relocation schedule
- Timely completion of early utility relocation
- Timely submission and issuance of permits; resolution of permit appeals
- Resolution of access, mobility and parking issues on Mercer Island
- Refining Redmond Technology Center pedestrian bridge and stormwater management
- Continued refinement to I-90 bridge track attachments
- Maintaining construction procurement schedule and competition



