



Lynnwood Link Extension Update

October 27, 2016

Today's Presentation

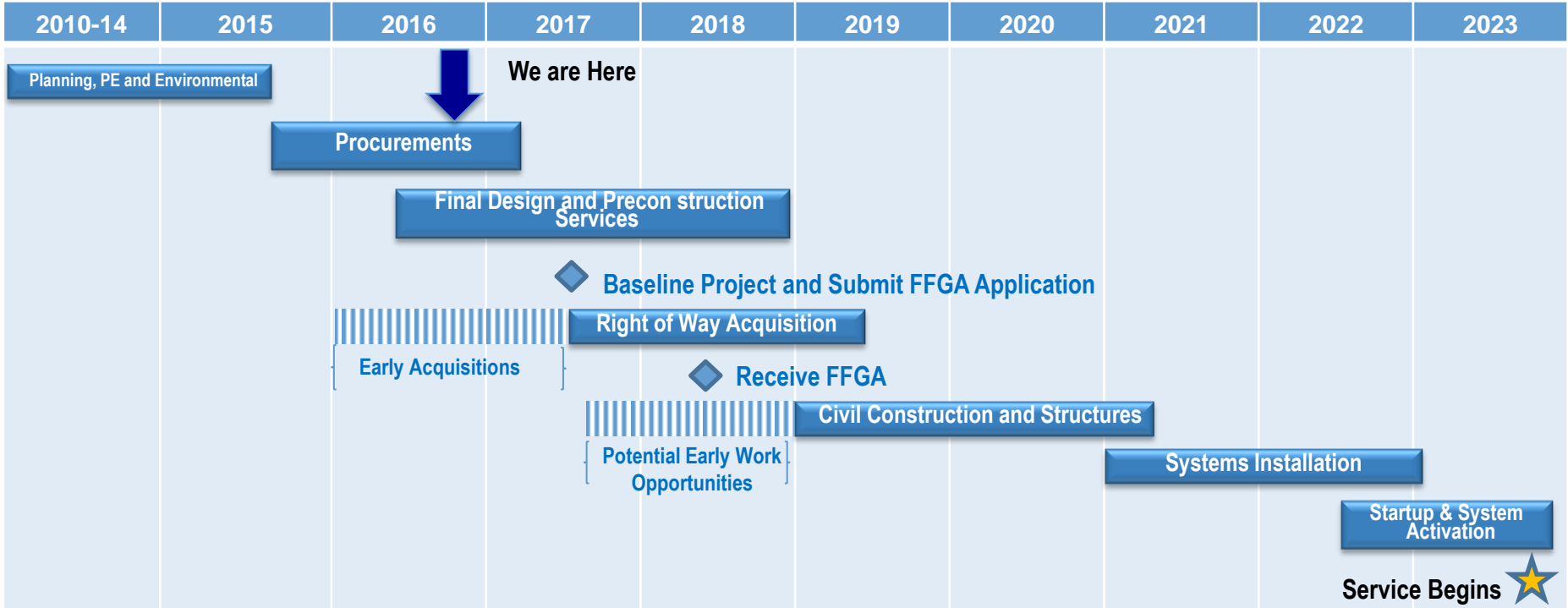
- Project Status
- Final Design
 - Station Designs
 - Open House Public Meetings
- Property Acquisition
- Third Party Agreements and Permitting

Lynnwood Link Extension

- **Length:** 8.5 miles from Northgate to Lynnwood
- **Alignment:** approximately 4.1 miles of elevated guideway and 4.4 miles at grade, no at-grade crossings
- **Stations:** NE 145th Street, NE 185th Street, Mountlake Terrace Transit Center and Lynnwood Transit Center
- **Parking:** 1,500 added spaces over the 8.5 mile extension
- **Estimated Total Project Cost at conclusion of Preliminary Engineering:** ~\$2.2 billion, includes vehicles and project share of Operations & Maintenance Facility



Working Schedule



Project Budget (through Phase Gate 4)

Project Phase	Current Adopted Budget	Commitment to Date	Incurred to Date
Administration	\$88.3	\$10.7	\$10.4
Preliminary Engineering	\$42.0	\$39.9	\$39.0
Final Design	\$111.5	\$79.9	\$6.3
Construction Services	\$104.9	\$12.7	\$1.0
3rd Party Agreements	\$17.4	\$2.0	\$0.7
Construction	\$0.0	\$0.0	\$0.0
Light Rail Vehicles	\$0.0	\$0.0	\$0.0
ROW	\$123.8	\$10.2	\$6.7
Total	\$487.9	\$155.4	\$64.2

As of September 30, 2016

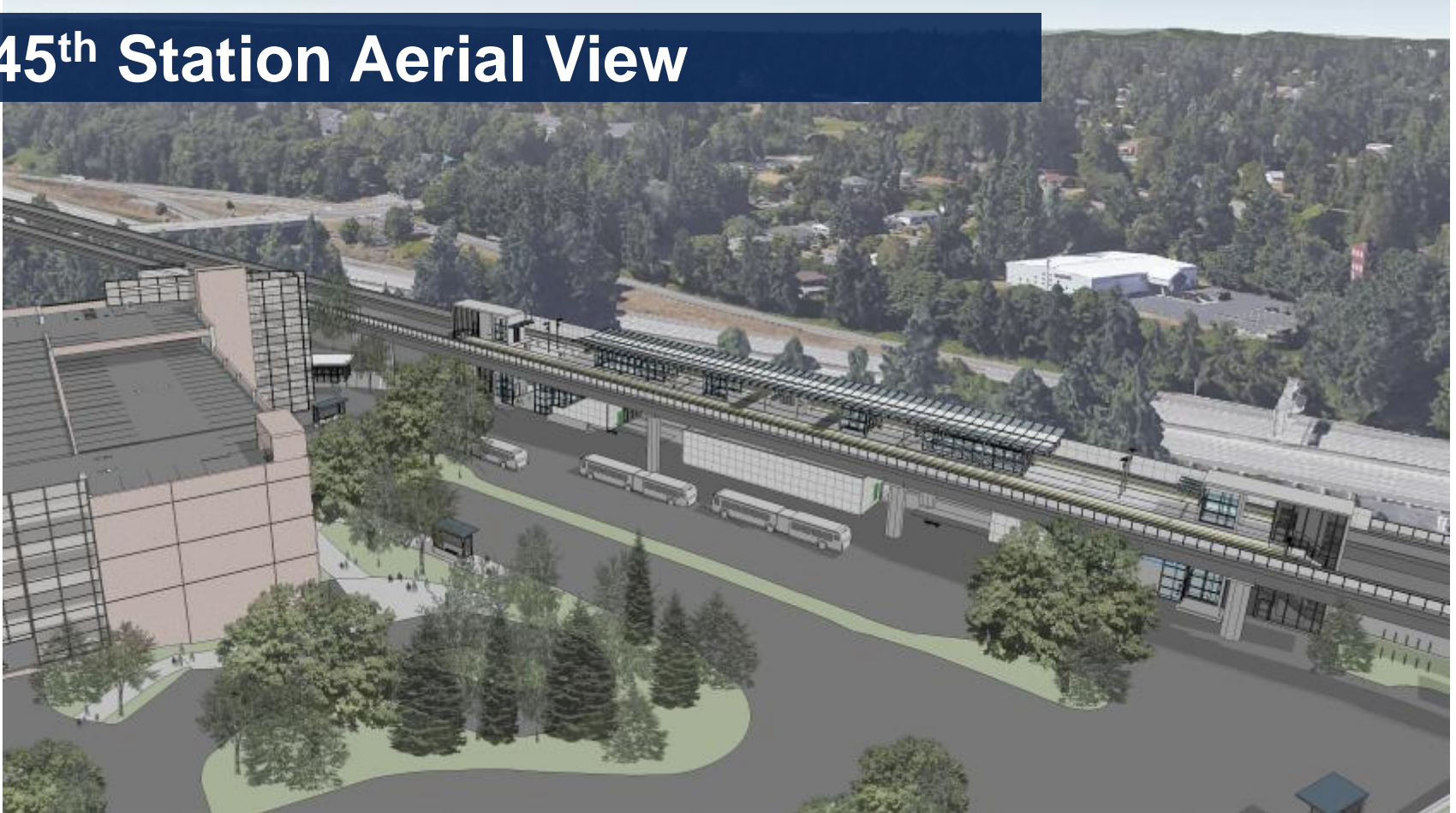
Final Design Status

- Executed Civil Final Design contract with HNTB-Jacobs JV in April 2016
- Station designs have been advanced to 30%
- Open house public meetings in November
- Guideway and Systems designs underway
- Constructability and Value Engineering ongoing with GC/CM contractors
- 60% designs due in 1Q 2017

145th Station Site Plan



145th Station Aerial View



185th Station Site Plan



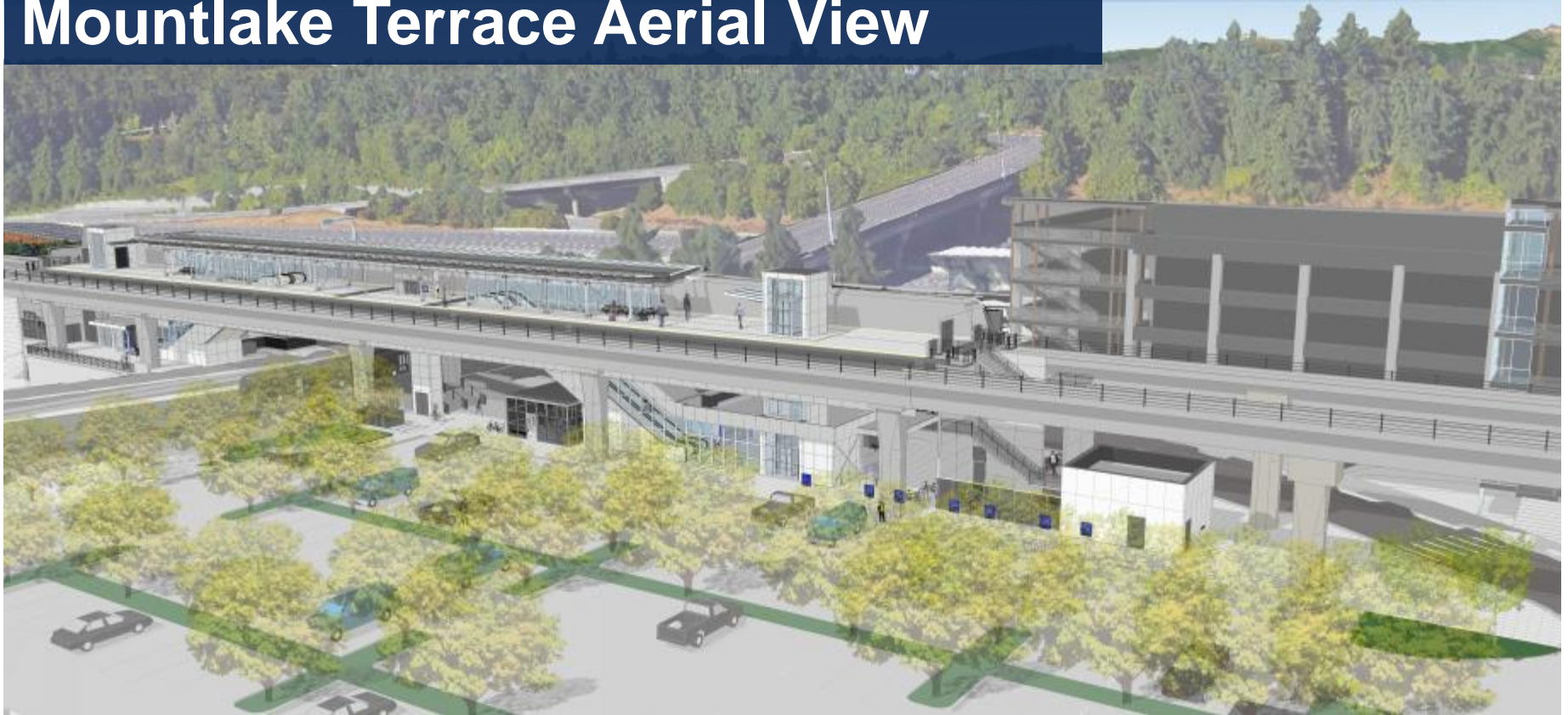
185th Station Aerial View



Mountlake Terrace Site Plan



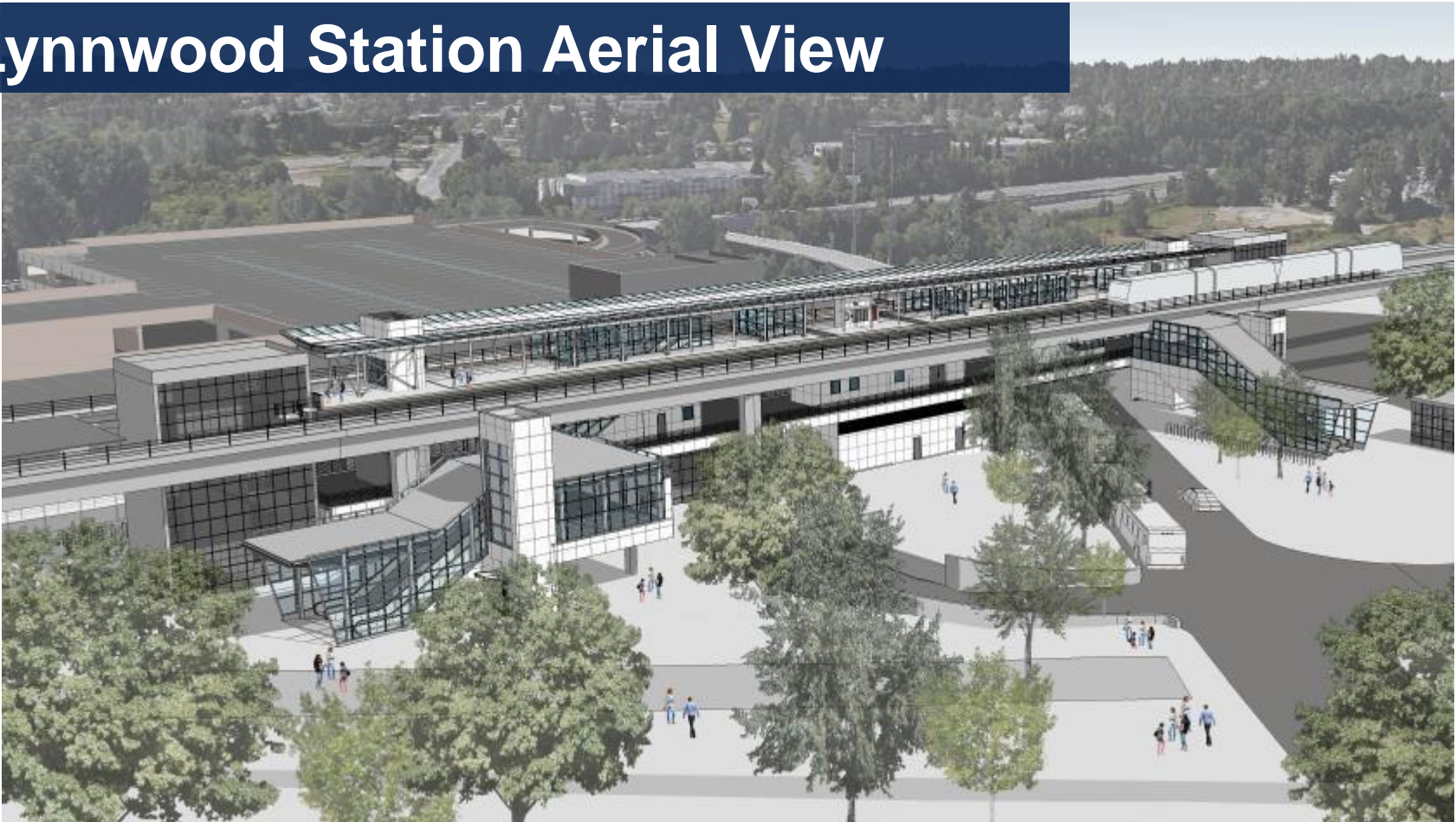
Mountlake Terrace Aerial View



Lynnwood Station Site Plan



Lynnwood Station Aerial View



Open House Public Meetings



- Each open house will focus on the station designs in that area
- All open houses will be held from 6-8pm

- 1 Lynnwood**
 Tuesday, Nov. 15
 Lynnwood Convention Center
 3711 196th St. S.W., Lynnwood 98036
- 2 Seattle/Shoreline**
 Wednesday, Nov. 16
 Shoreline City Hall
 17500 Midvale Ave. N., Shoreline 98133
- 3 Mountlake Terrace**
 Thursday, Nov. 17
 Nile Shrine Country Club
 6601 244th St. S.W., Mountlake Terrace 98043

Property Acquisition Status

Anticipated Acquisitions	Board Approved	Offers Made	Closings to date	Relocations Required	Relocations Completed
182	40	37	6	107	4

- Early indications of ~15% higher than anticipated escalation in real estate prices have been seen with the initial batch of certified parcel appraisals.
- Lengthy condemnation process in Snohomish County may create schedule constraints.

Third Party Agreements and Permitting

- Cities (Seattle, Shoreline, Mountlake Terrace, Lynnwood)
 - Expedited Design Review and Permitting agreements
 - Transitway Agreements
 - Land Use Permits
 - Street Improvement Permit (SIP) - City of Seattle
 - Special Use Permit (SUP) - City of Shoreline
 - Conditional Use Permit (CUP) - City of Mountlake Terrace
 - Development Agreement (DA) – City of Lynnwood
- WSDOT
 - Task Order for Final Design Review executed
 - Airspace Lease
 - Project Development Approval
 - O&M Agreement



Questions?