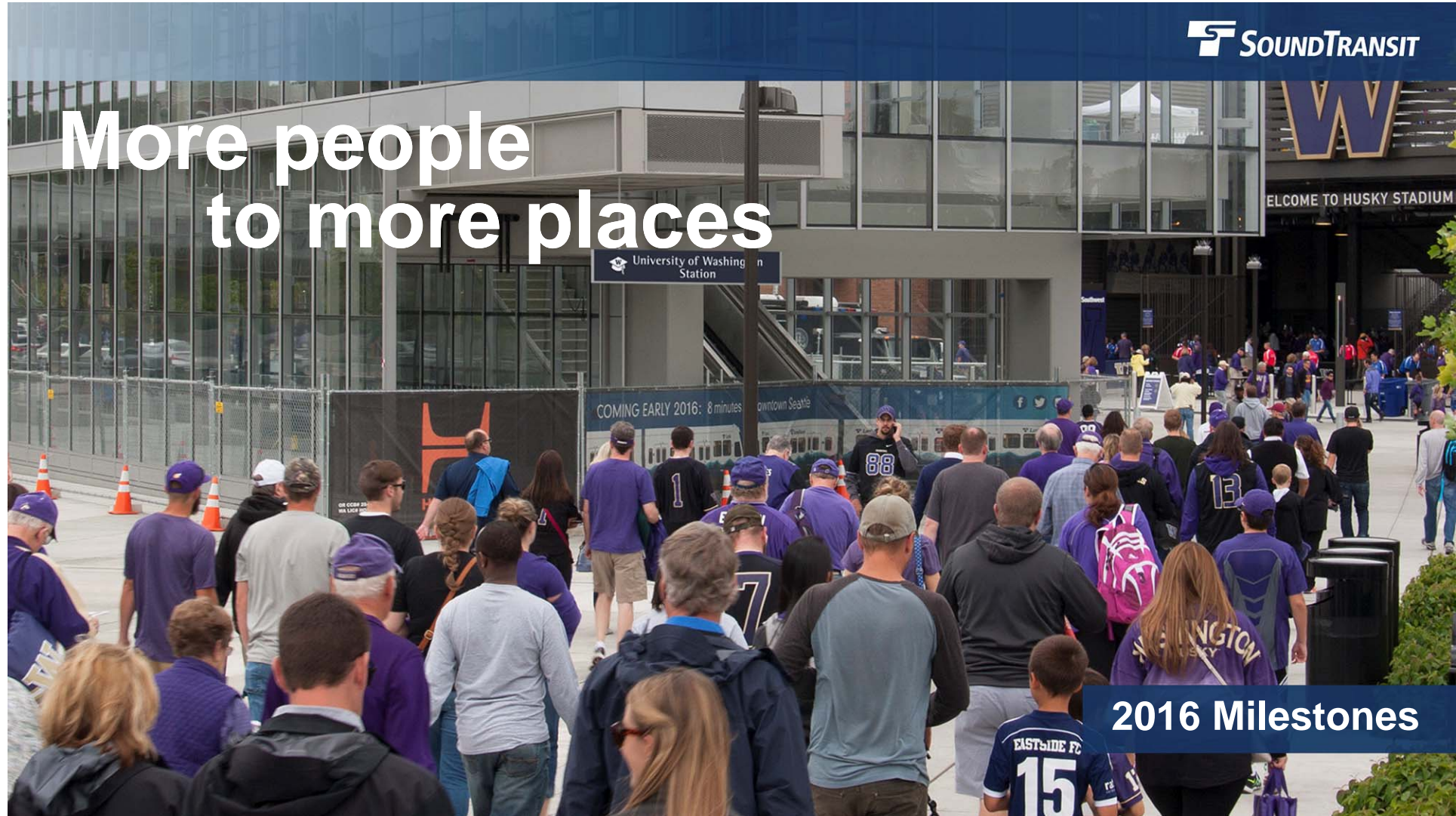


More people to more places



2016 Milestones

2015 Milestones

Serving our Customers

- ✔ Low-income fare implemented
- First Hill Streetcar service starts
- ✔ Transit Integration Summit with Puget Sound Regional Council held
- ✔ Mid-day bus storage lot opens
- ✔ Mobile website launched
- ✔ Five double-deck and 17 CNG buses arrive
- Sounder train safety control system completed
- ✔ Link Maintenance Management Information System launched
- ✔ Ridership reaches 34 million

Building the System

- ✔ East Link project baseline established
- Mukilteo Sounder station south platform completed
- ✔ Northgate Link tunneling reaches Roosevelt Station
- ✔ I-90 HOV ramp completed
- ✔ University Link Capitol Hill Station substantially complete
- ✔ Point Defiance Bypass construction begins
- ✔ University Link service testing begins
- South 200th Link guideway, parking garage, plaza and retail center construction complete
- Lynnwood Link Final Design begins
- Sounder yard expansion design/build contract begins
- Tacoma Trestle construction begins
- ✔ Northgate Link tunneling reaches U District Station
- East Link design/build contract from SR 520 to Overlake Transit Center begins

Planning for the Future

- ✔ Federal Way Link Draft EIS published
- ✔ Lynnwood Link Final EIS published
- ✔ System Plan expansion alternatives evaluated
- ✔ Tacoma Link Environmental Analysis published
- ✔ Federal Way Link Preferred Alternative identified
- Initial parking pilot projects completed
- Environmental process for Sumner and Puyallup access projects completed
- ✔ Operations & Maintenance Satellite Facility Final EIS published
- ✔ System planning project-level evaluation begins

Committed to Sustainability and Transit-Oriented Development

- ✔ Capitol Hill TOD Notice to Award issued
- ✔ Three Sounder locomotives upgraded to cleaner air standards

Record ridership in 2015



Building out Link



Double deckers arrive



15 good years



Moving on ST3

The Long-Range Plan is the vision for how the regional high-capacity transit (HCT) system should grow over many decades.

Why update the Long-Range Plan?

- To ensure consistency with updated local and regional plans
- To incorporate current population and employment forecasts
- To identify potential modifications to the plan that address long-term mobility needs

Where are we in the process?

Sound Transit has completed the Draft Supplemental Environmental Impact Statement (SEIS), which evaluates potential options for expanding the regional transit system.

The updated Long-Range Plan will form the basis for the next ballot measure (known as a system plan) that will be considered by voters.



Regional Transit Long-Range Plan Update
Draft Supplemental Environmental Impact Statement



The process ahead



Caring for our planet



Unfinished business



2016 Milestones

Serving our Customers

- U Link opens
- ORCA LIFT begins for ST Express and Sounder
- South 200th Link opens
- 32,000 additional ST Express bus hours implemented
- Sounder off-peak round-trip added to south line
- Ridership reaches 41.4 million
- Parking permit program implemented

Building the System

- East Link construction groundbreaking
- Lynnwood Link enters final design
- Tacoma Trestle construction begins
- Tacoma Link Extension final design begins
- Sounder yard expansion construction begins
- Northgate Link tunnels completed

Planning for the Future

- Draft ST3 System Plan released for public comment
- Capitol Hill TOD developer agreement approved
- TOD Development Agreement for OMSF negotiated with City of Bellevue
- ST3 System Plan adopted
- Federal Way Final EIS published

Nearly 42 million riders



All aboard U Link



Angle Lake Station opens



Northgate tunnels dug



East Link breaks ground



Lynnwood Link final design



Federal Way planning progress

FEDERAL WAY TRANSIT CENTER

A photograph of the Federal Way Transit Center. The building features a prominent steel truss structure with a sign that reads "FEDERAL WAY TRANSIT CENTER". A bus with a blue and teal livery is blurred in the foreground, moving from right to left. People are visible waiting at the station platform. The sky is clear and blue.

More service for ST Express



New Sounder trip



Focus on our planet



Into the future



More people to more places

University of Washington
Station

COMING EARLY 2016: 8 minutes
downtown Seattle

W
WELCOME TO HUSKY STADIUM

2016 Milestones

