



Downtown Redmond Link Extension

Preferred Alternative Update

Capital Committee

June 8, 2017

Link Light Rail
Sonder Rail
ST Express Bus



Current service



Light rail

- University of Washington, Capitol Hill, Downtown Seattle, Sea-Tac Airport, Angle Lake
- Tacoma Dome to Theater District



2023



Light rail

- Mercer Island, Bellevue, Spring District, Redmond (Overlake)
- Shoreline, Mountlake Terrace, Lynnwood
- U District, Roosevelt, Northgate
- Tacoma Link to Martin Luther King / South 19th St

Link Light Rail

Souther Rail

Added Parking, Improvements

Bus Rapid Transit (BRT)

ST Express Bus



2024



Light rail

- SE and Downtown Redmond
- Kent/Des Moines, Federal Way



Bus

- BRT - Lynnwood to Burien
- BRT - SR 522 to NE 45th
- North Sammamish park-and-ride




Downtown Redmond Link Extension

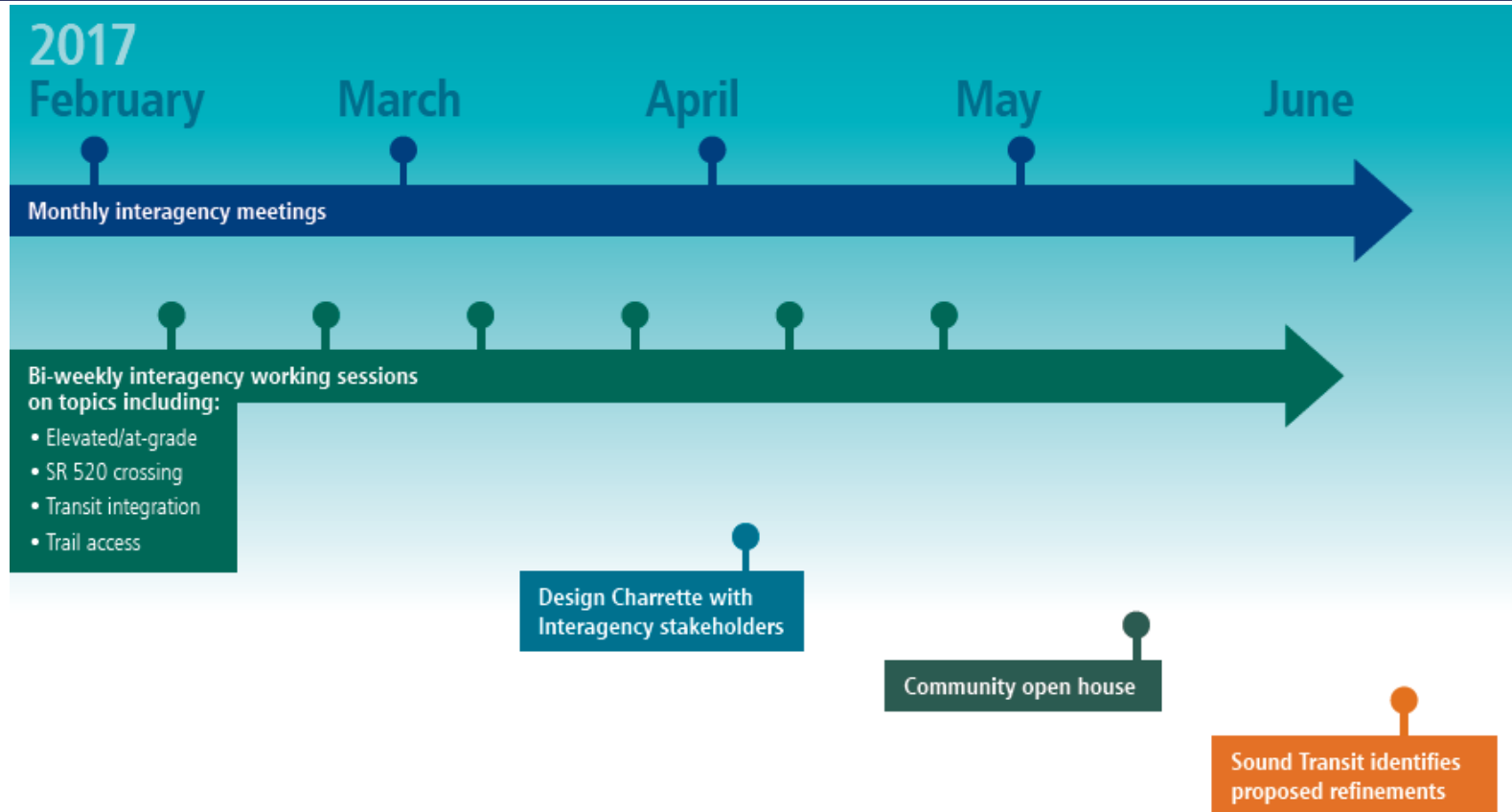


- 3.7-mile light rail extension
- Two stations
- 1400 parking spaces
- Open for service in 2024
- Downtown Redmond to:
 - Downtown Bellevue in 18 minutes
 - International District Station in 38 minutes

Project schedule

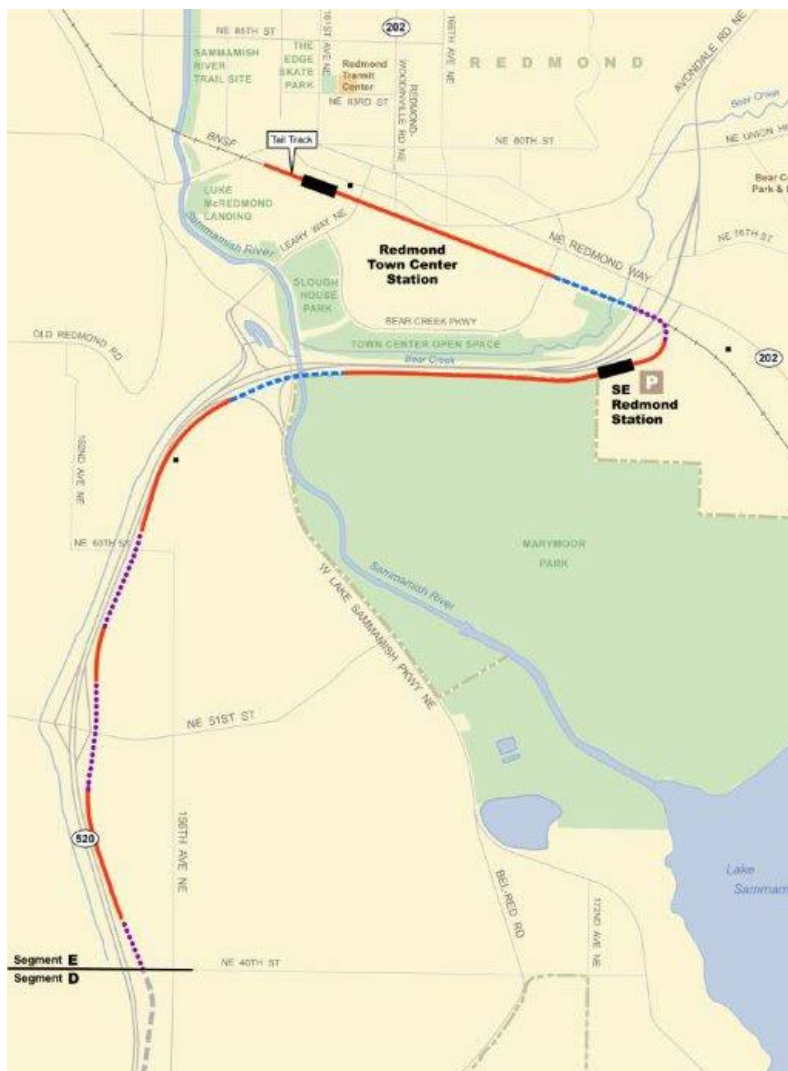
2007 - 11	2016	2017-2018	2018	2018 - 19	2019 - 24
<p>East Link EIS and Record of Decision Board selected project to be built</p> <ul style="list-style-type: none"> Two at-grade stations 1400 parking spaces 	<p>System expansion approved by voters</p> <ul style="list-style-type: none"> Funded DRLE through construction 	<p>Conceptual engineering</p> <ul style="list-style-type: none"> Develop Design Build Project Requirements 	<p>Board selects project to be built</p>	<p>Design and real estate acquisition</p>	<p>Construction and systems testing</p>

Concept refinement process



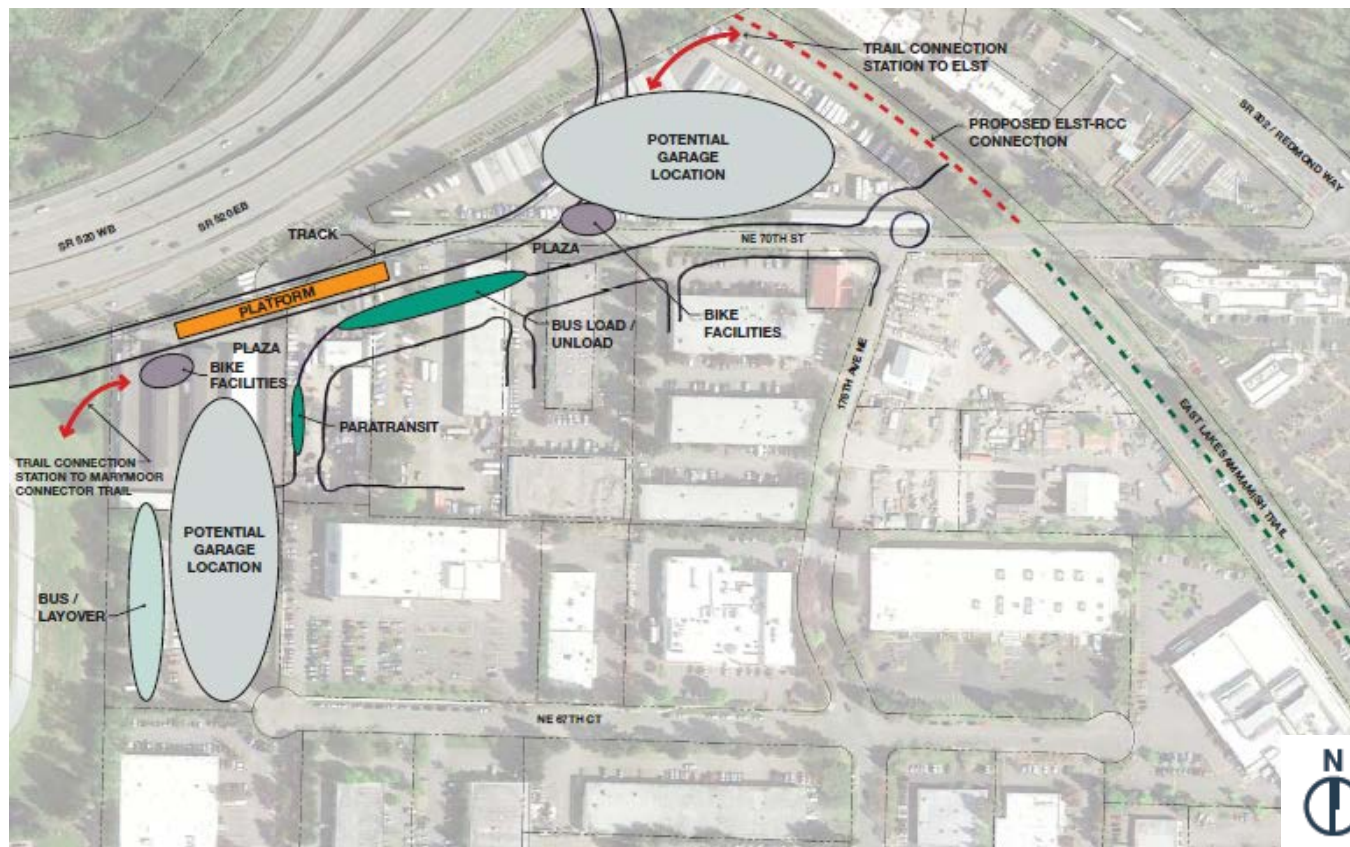
Selected Project

- Continues East Link Extension at NE 40th Street
- Continues along the east and south side of SR 520 to SR 202
- SE Redmond Station includes 1400 parking spaces
- Alignment continues under SR 520
- At-grade in Downtown Redmond
- Terminal station west of Leary Way



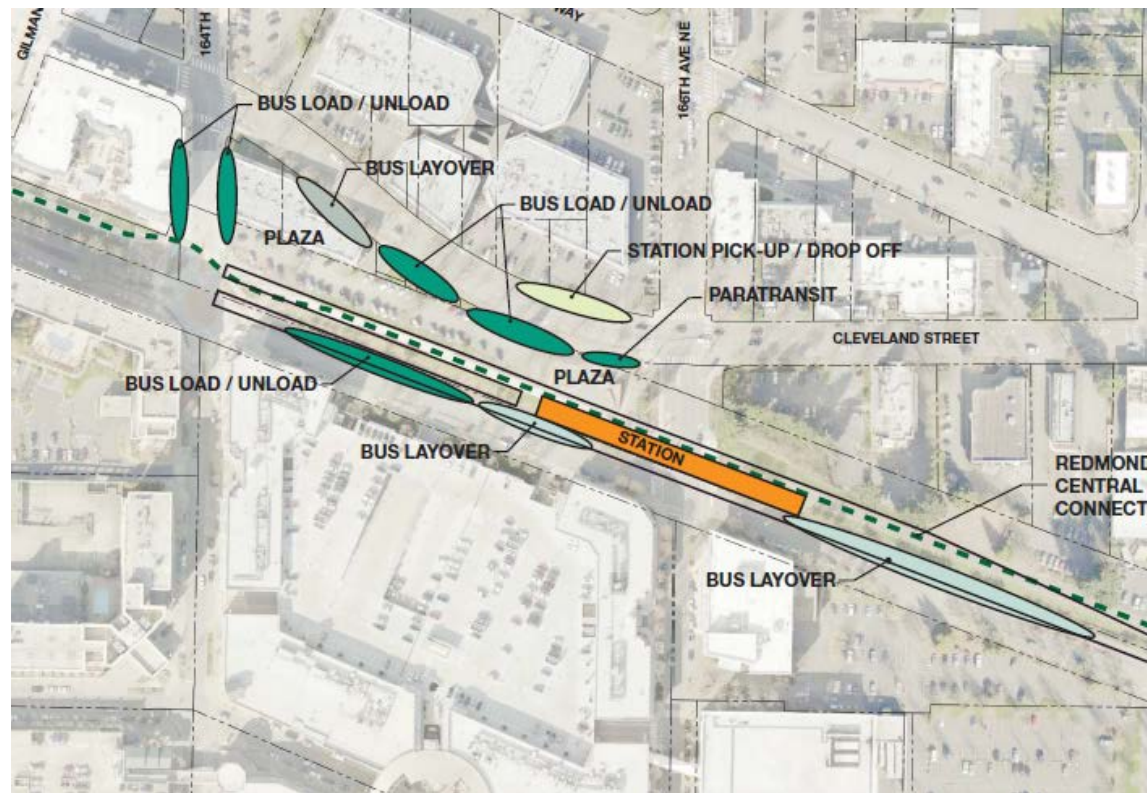
Southeast Redmond station

- Park-and-ride facility with 1,400 parking spaces
- Integrated with the City of Redmond's Marymoor Subarea vision

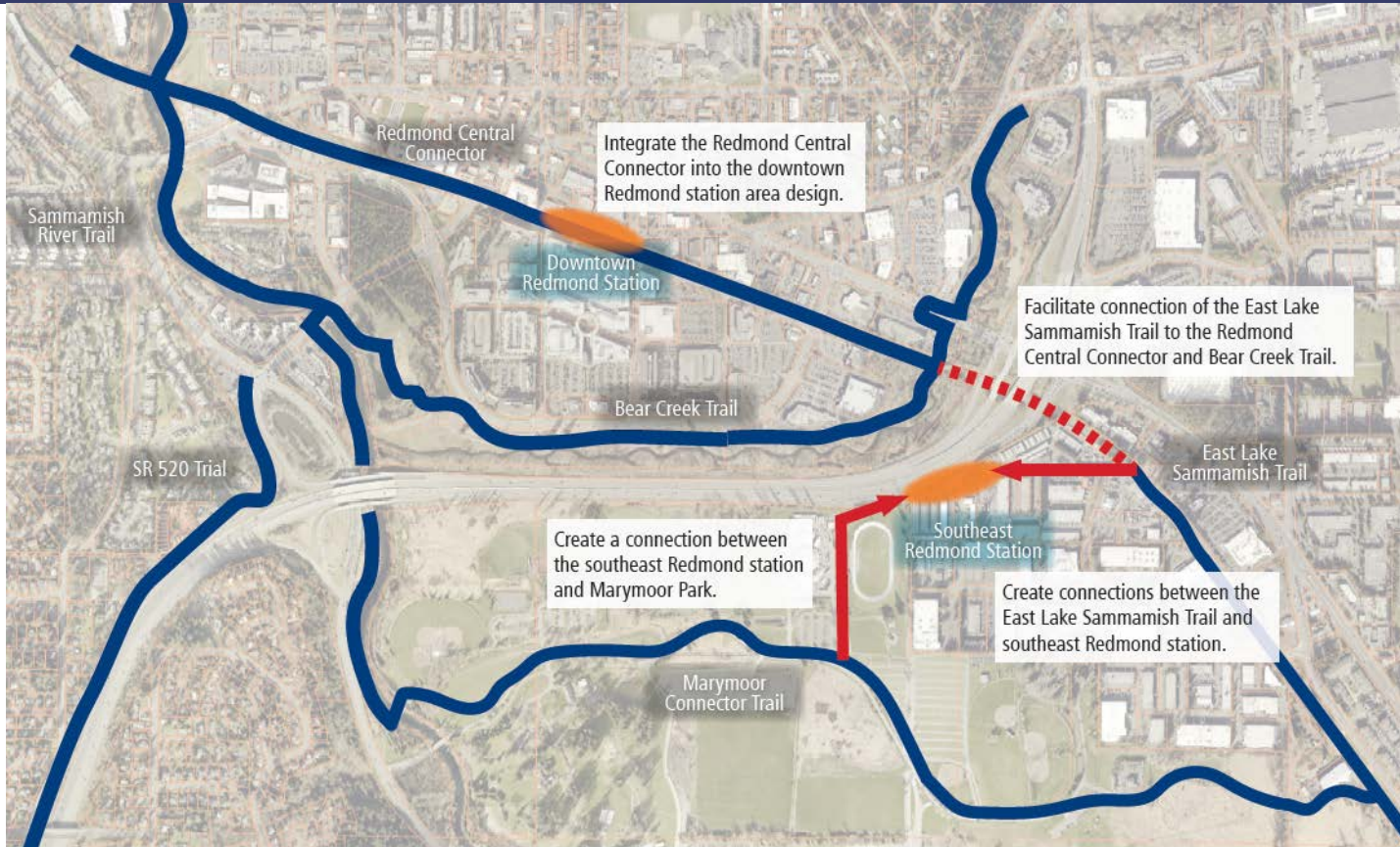


Downtown Redmond station

- Elevated guideway and station enhances mobility and safe access
- Eliminates traffic conflicts
- Maintains Redmond Central Connector Trail



Potential trail connections



Environmental Assessment

- Final EIS and Record of Decision issued November 2011
- Selected project being updated with proposed refinements
- Additional environmental review
- Board updates the project to be built



