

# ***East Link Extension Update***

*System Expansion Committee*

*10/08/20*

# *Why we are here*

- Provide a project update on the East Link Extension
  - Schedule
  - Budget
  - Upcoming Milestones
  - Construction Progress
  - Key Issues
- Information only, no action required



# Financial Snapshot

<b>Project Budget</b>	<b>\$3.677 B</b>
Committed	\$3.124 B
Incurred	\$2.634 B

- Year of Expenditure \$
- Financials as of August 2020

- 85% complete
- Project baselined in April 2015

# Challenges / Upcoming Milestones

## Challenges

- COVID-19 Impacts
- Station Schedules and Systems Access
- Redmond Technology Station Garage
- Contractor Performance & Design Change

## Upcoming Milestones

- Mercer Island Transit Interchange 100 percent design (Q4 2020)
- Bellevue Tunnel Contract Acceptance (Q4 2020)
- Bellevue Way Restoration Complete (Q4 2020)
- Bel-Red Substantial Completion (Q4 2020)
- South Bellevue Substantial Completion (Q1 2021)

# Judkins Park Station



# *I-90 Homer M. Hadley Bridge*



# *Mercer Island Station*





# South Bellevue Station



# Winters House



# East Main Station



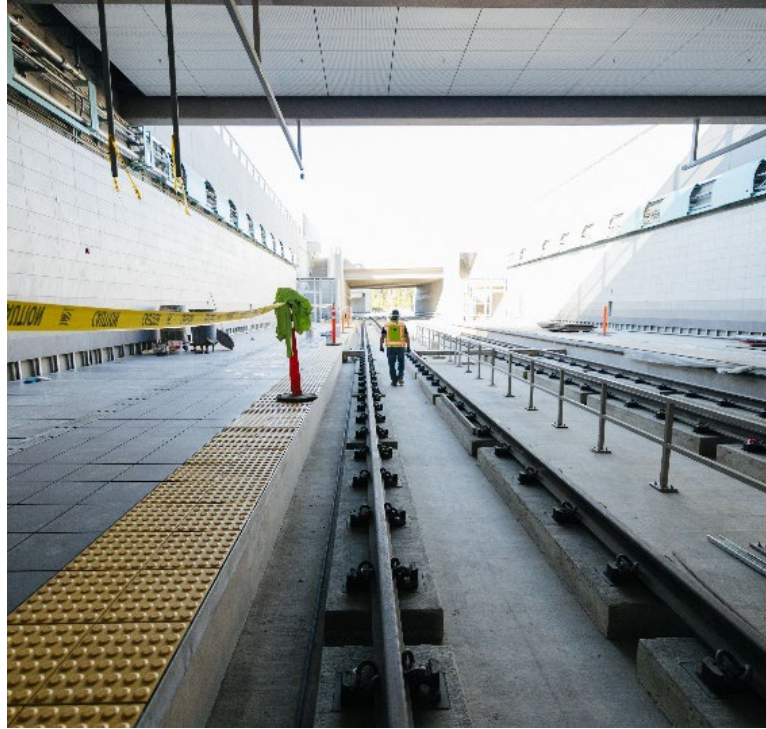
# *Bellevue Downtown Station*



# Wilburton Station



# Spring District/120th Station



# Bel-Red/130th Station

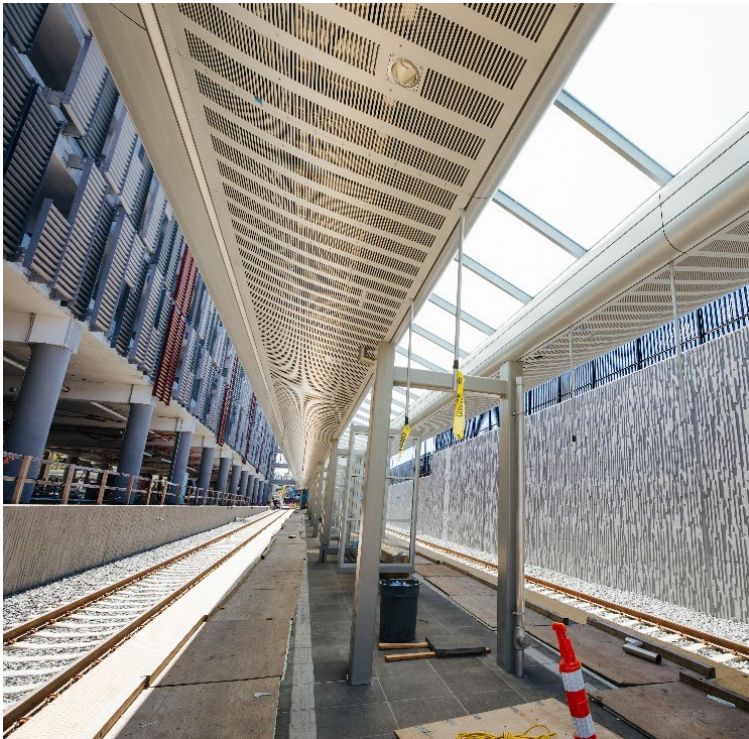


# Overlake Village Station





# Redmond Technology Station



# *Key Issues*

# Redmond Technology Station Garage

Network: Aug 12, 2020 at 10:28:11 AM PDT  
156th Ave NE, United States

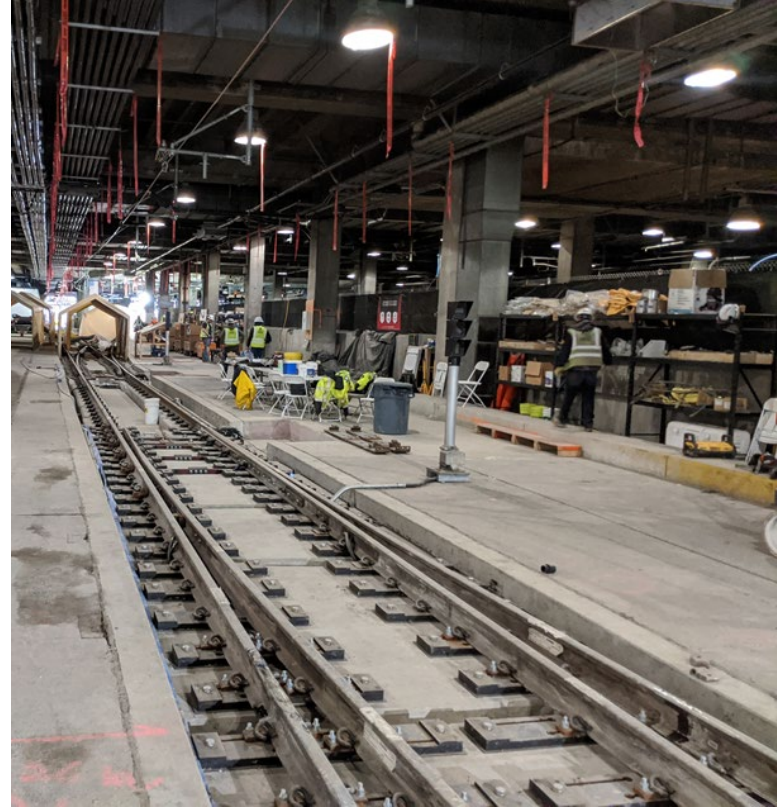


# *South Bellevue Park and Ride Garage*



# Systems Tie-in

- 2020 – Connect East Link rail infrastructure (“Connect 2020”)
- 2021 – Connect East Link overhead catenary system (“PowerUp 2021”)
- Weekend closures for installation and testing



# Partnerships

- Eastside Emergency Preparedness
- Mercer Island Interchange Update
- Operations & Maintenance Solutions with WSDOT



*Thank you.*



 [soundtransit.org](https://www.soundtransit.org)

