

# *East Link Ecosystem Mitigation*

*System Expansion Committee*

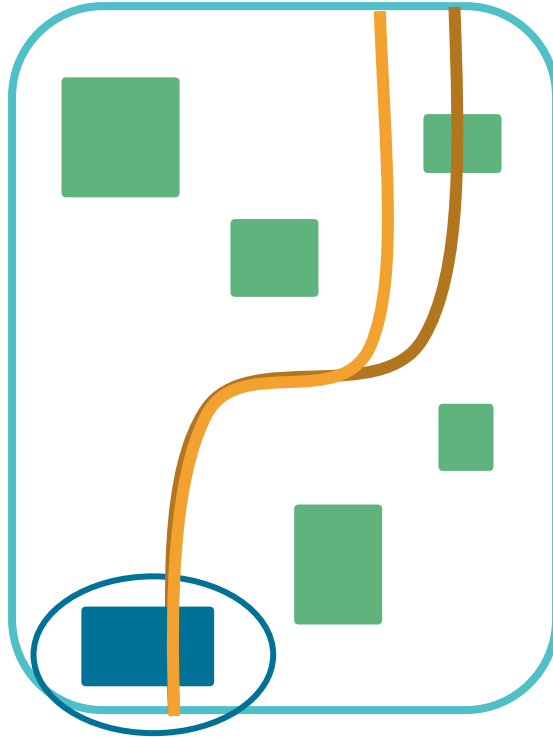
*9/8/22*



# *Why we are here*

- Highlight East Link ecosystem mitigation work
- Showcase opportunities the mitigation program provides for meaningful environmental restoration
- Illustrate the benefit of strong partnerships with federal, state, and local jurisdictions and Tribes

# *Environmental Review Phase*



**Preferred  
Alignment**

**Resource  
Analysis**

**Impact  
Assessment**

**Avoidance &  
Minimization**

**Compensation and/or  
Restoration**

# *What Are East Link's Natural Resource Impacts?*

Temporary impacts: 7 acres

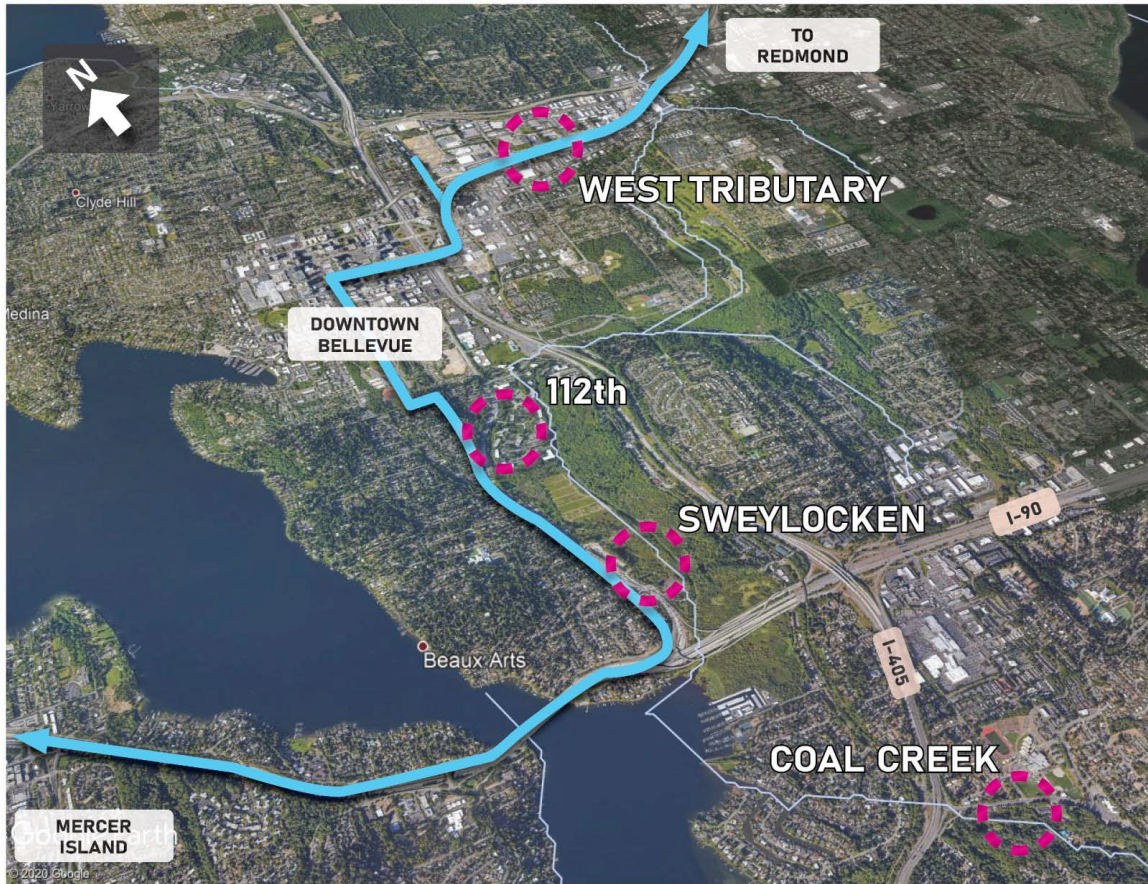
Permanent impacts: 6.5 acres



# Mitigation Development

- Collaborative process with City of Bellevue, state and federal regulators, and Tribes
- 4 separate mitigation sites
- 14 acres of ecosystem mitigation





# Mitigation Sites

4 sites totaling 14 acres

1. Coal Creek (1 acre)
2. Sweylocken (7 acres)
3. 112th (4 acres)
4. West Tributary (2 acres)

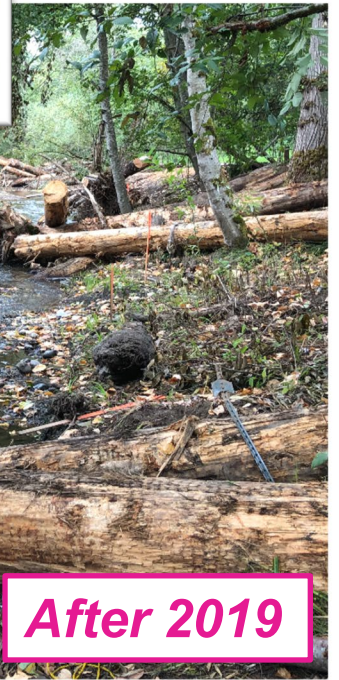
# Coal Creek



# Coal Creek

## Instream Wood

- Provides pools, riffles
- Refuge for juvenile salmon
- Spawning areas for adult salmon



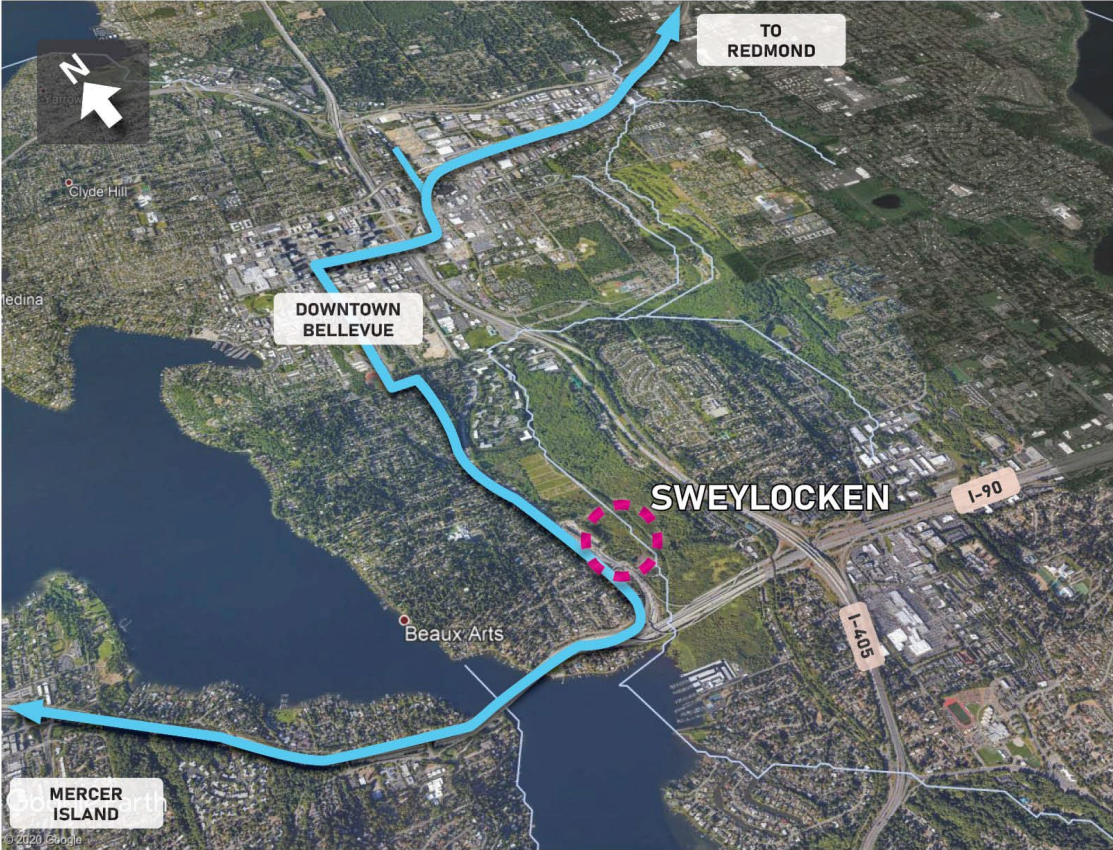
Before



After 2019



# Sweyolocken



# *Sweyolocken Mitigation Site*



**Before**

# Sweyolocken Mitigation Site

In Construction



# Sweyolocken - Successes

- Retained many native plants
- Saved existing peat soil
- Evidence of animal use:
  - Deer
  - Rabbits
  - Coyotes
  - Owls
  - Heron
  - Geese
  - Songbirds
  - Frogs
  - Beavers
  - Turtles



# 112th



# 112<sup>th</sup> Mitigation Site



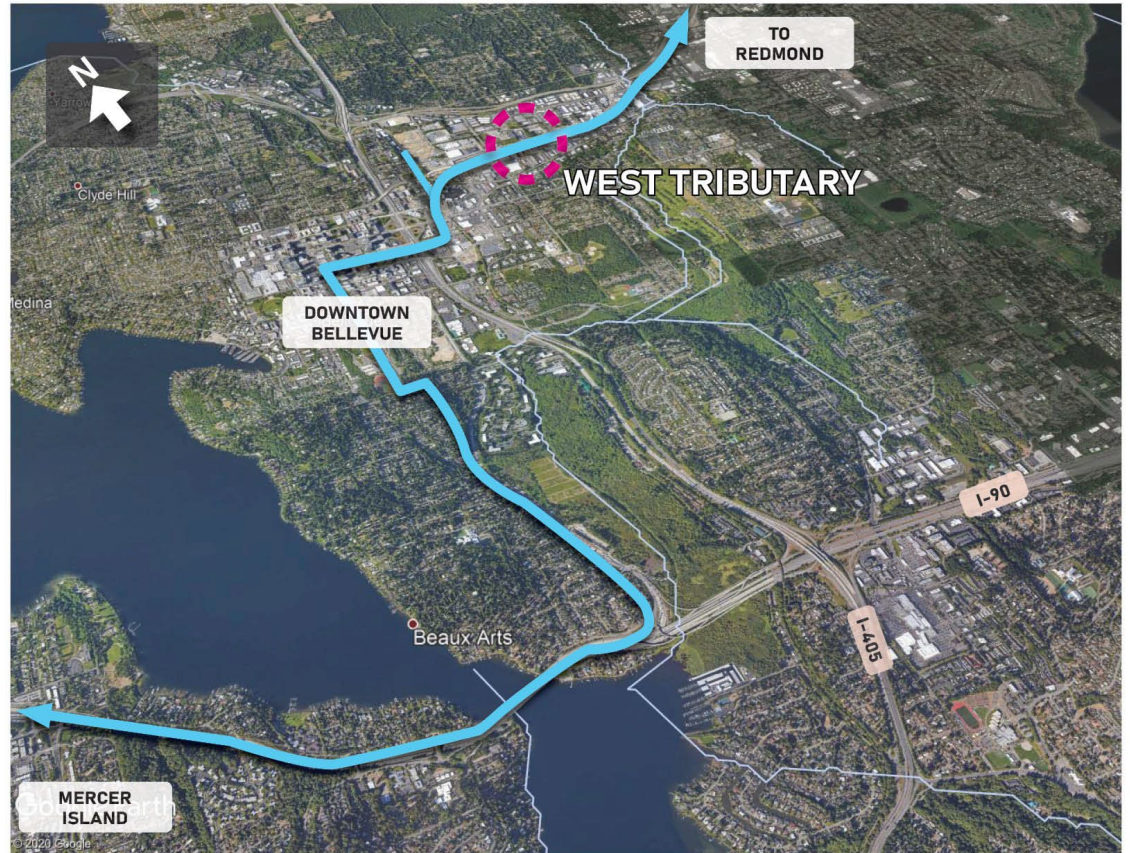
*Before*



*After*



# West Tributary



# West Tributary Mitigation Site

- Located on a branch of Kelsey Creek, a salmon bearing stream
- Directly south of East Link alignment
- Provides habitat connection
- Surrounded by industrial uses





# West Tributary Mitigation Site



# West Tributary – Construction

- Removed pavement and up to 9 feet of fill material
- Stream grading and habitat improvements
- Control of water – both stream and groundwater



# West Tributary – Stream Restoration



*Thank you.*



 [soundtransit.org](https://www.soundtransit.org)

