

Tacoma Dome Link Extension Contract Modification

System Expansion Committee

12/08/22



Why We're Here Today

- Provide an update on the Tacoma Dome Link Extension Project.
- Discuss additional analysis needed in South Federal Way segment and Fife station area.
- Authorize the chief executive officer to execute a contract modification with HDR Engineering, Inc. (M2022-98) for additional project development services.

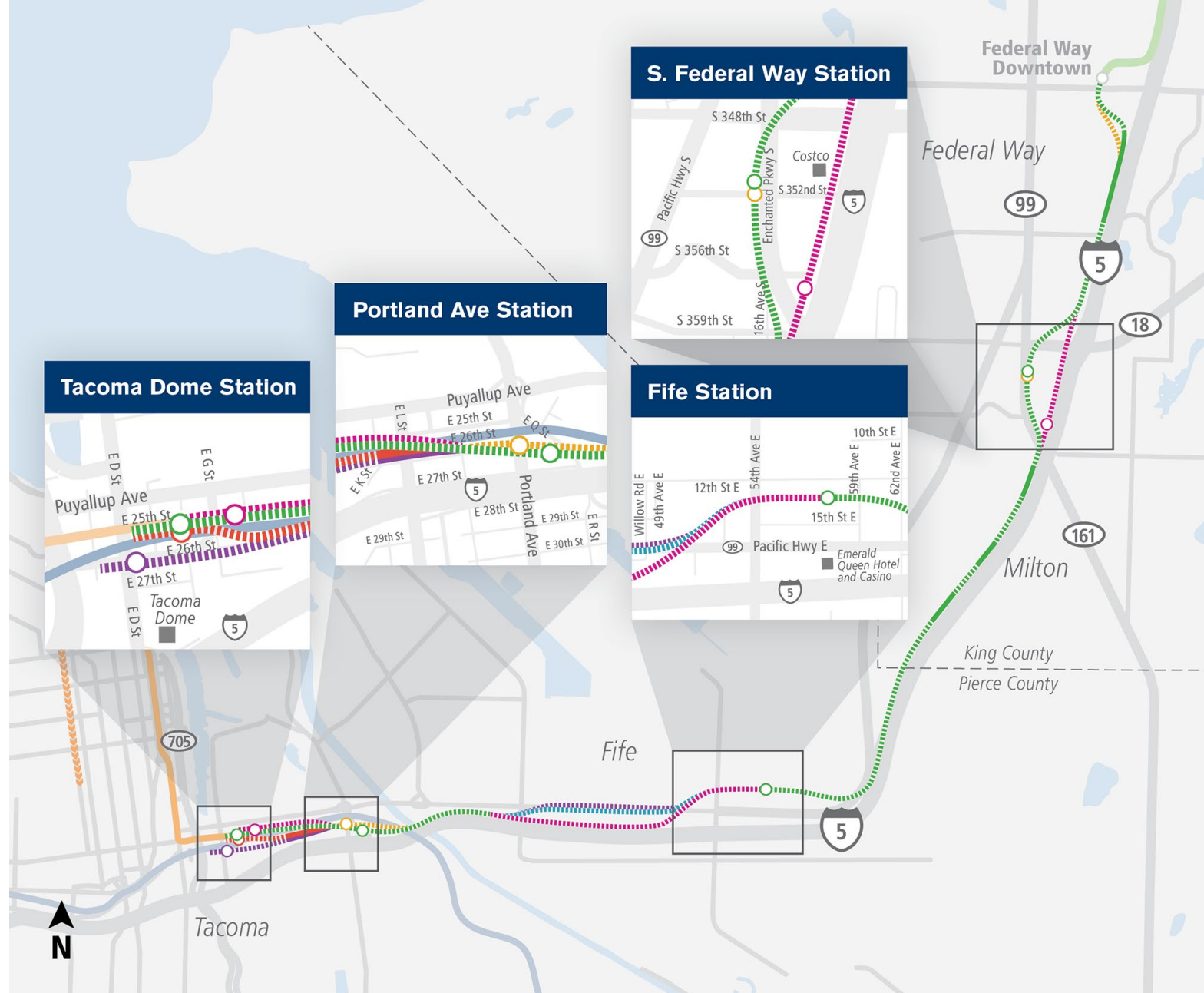
Tacoma Dome Link Extension (TDLE)

- 10 miles
- 4 stations
- 1 river crossing
- Currently in DEIS phase

- Preferred Alternative
- Design options
- Other Draft EIS alternatives

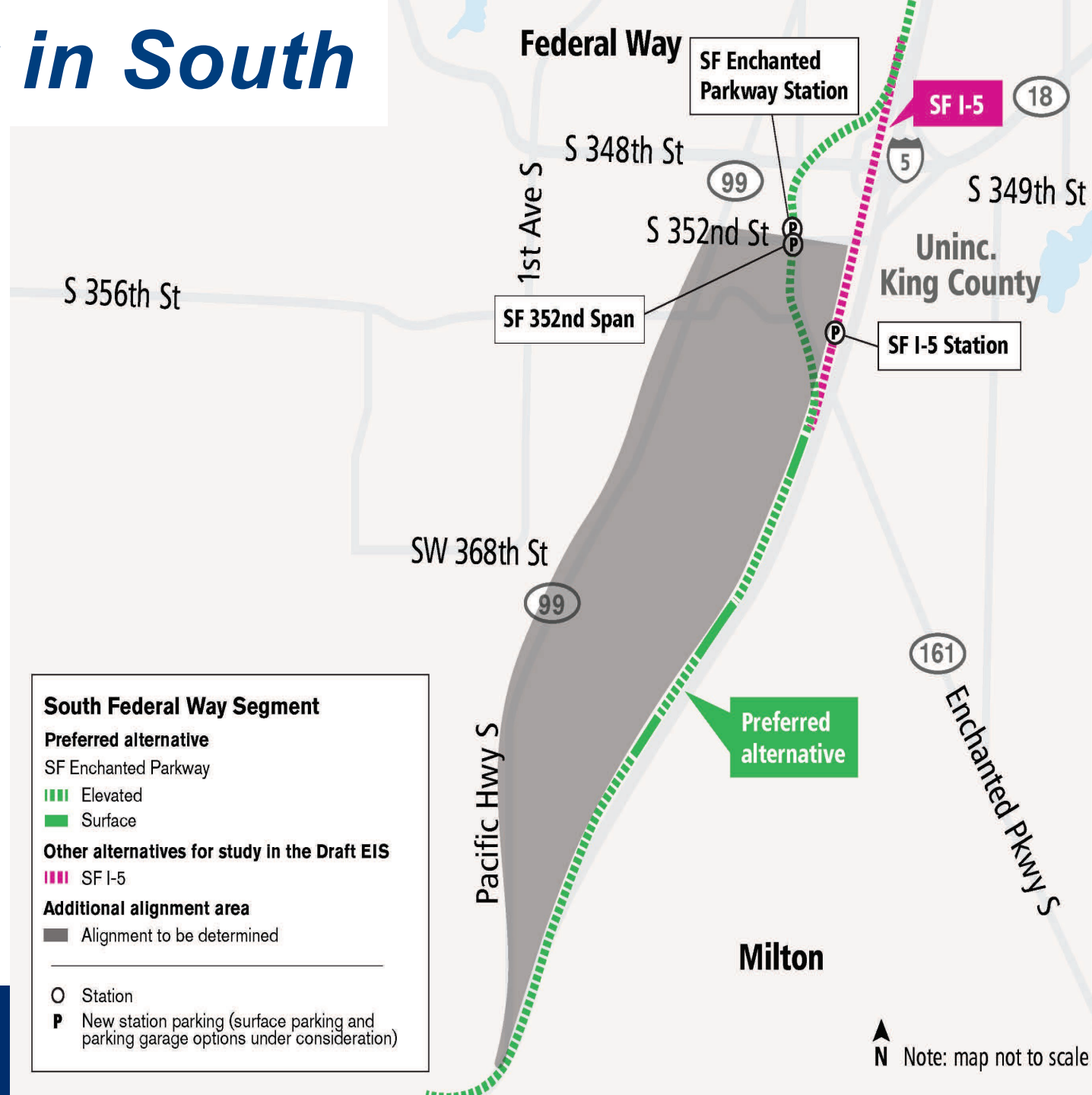
Route profiles

- ▬ Elevated
- ▬ Surface
- Station alternatives



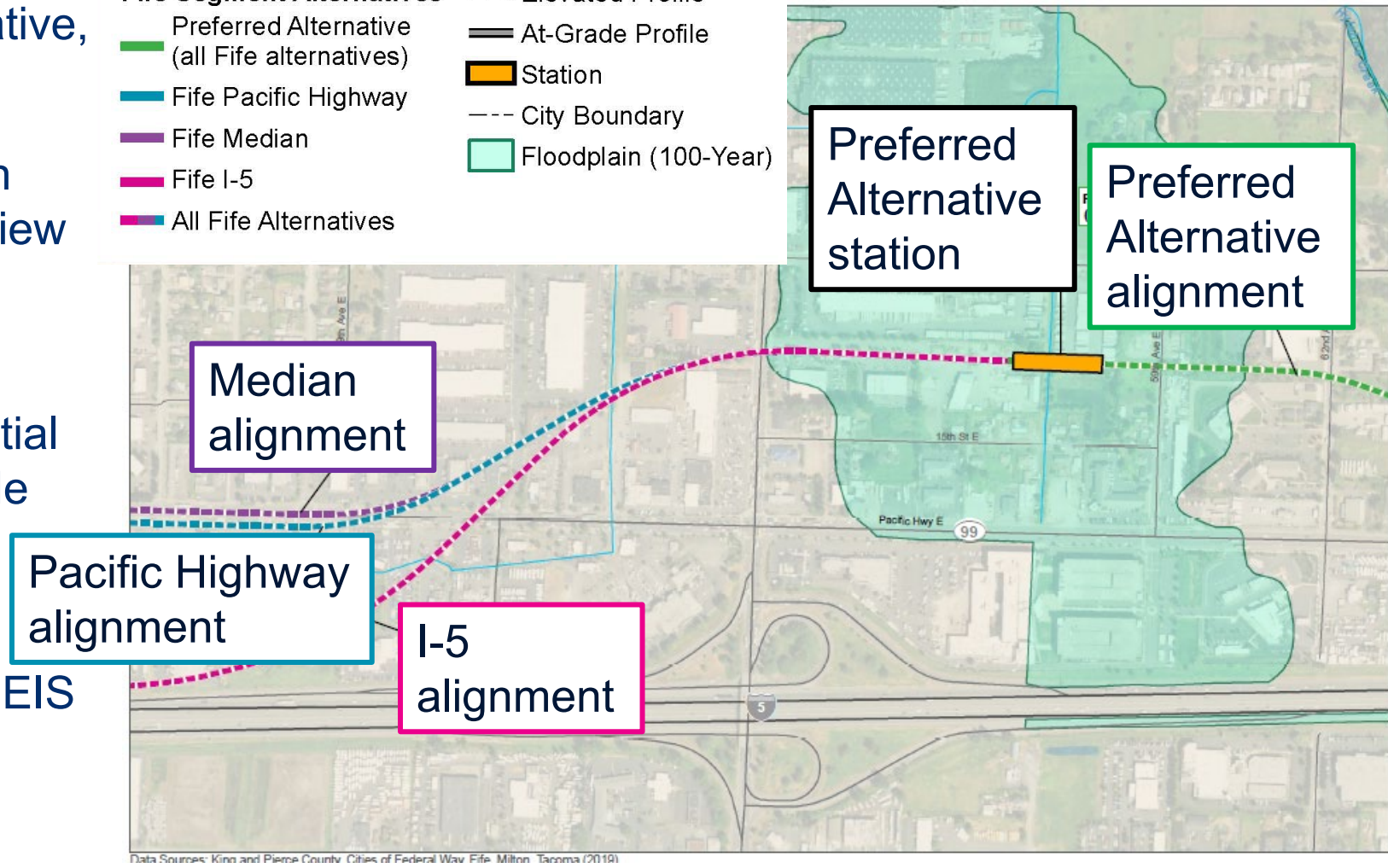
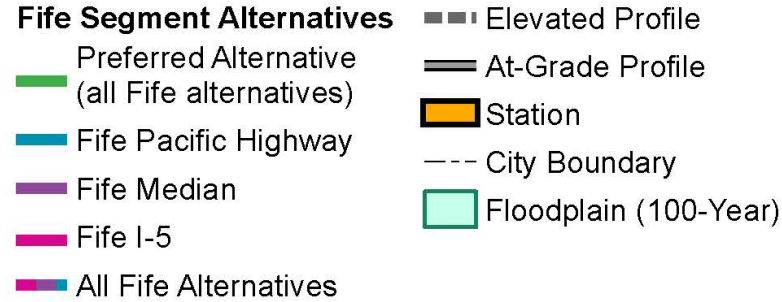
Light rail alignment in South Federal Way

- Currently, single Preferred Alternative alignment
- Proposed additional analysis south of the South Federal Way Enchanted Parkway Station.
- Potential future action to identify addition(s) to DEIS



Fife Station Alternative

- Currently one Fife Station alternative, in a floodplain
- Preliminary floodplain information verified during environmental review process
- Proposed additional analysis supporting development of potential additional station option(s) outside the FEMA-mapped floodplain
- Current Fife Station Preferred Alternative to remain in the Draft EIS
- Potential future action to identify addition(s) to DEIS



Summary of contract modification

- Modify the consultant services contract with HDR Engineering, Inc. to provide additional project development services related to analysis and conceptual design for the TDLE project in the South Federal Way segment and Fife station area.
- Action will provide supplemental consultant support through the completion of Phase 2 (DEIS) activities after potential future Board action to Modify M2019-75.
- Update conceptual engineering capital cost estimates.

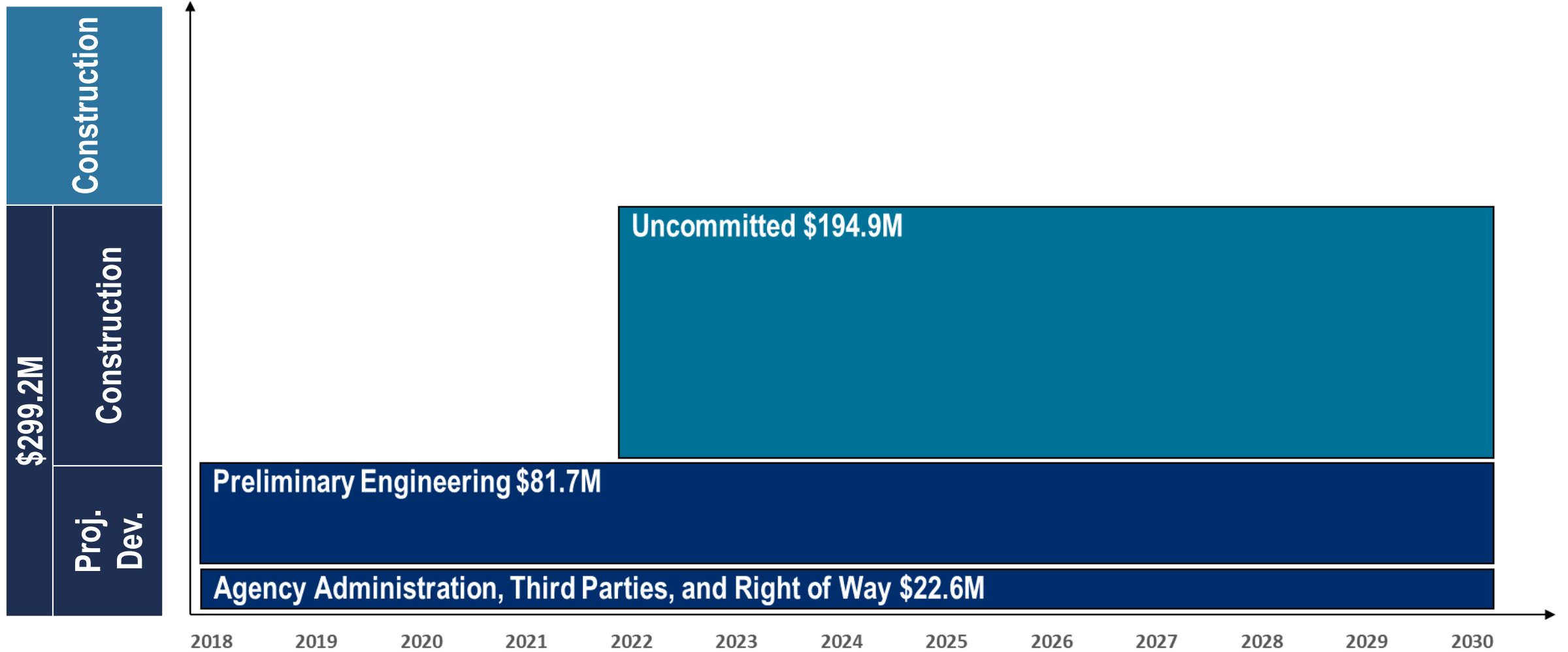
Today's Action

Contract Modification - Motion No. M2022-98

- Authorizes the chief executive officer to execute contract modifications with HDR Engineering, Inc. to provide additional project development services to complete Phase 2 of the Tacoma Dome Link Extension project, in amounts not to exceed \$10,002,573 with a 10-percent contingency of \$1,000,258 for a new total authorized contract amount not to exceed \$93,653,336 contingent upon Board approval of the Proposed 2023 Budget through Resolution No. R2022-35.

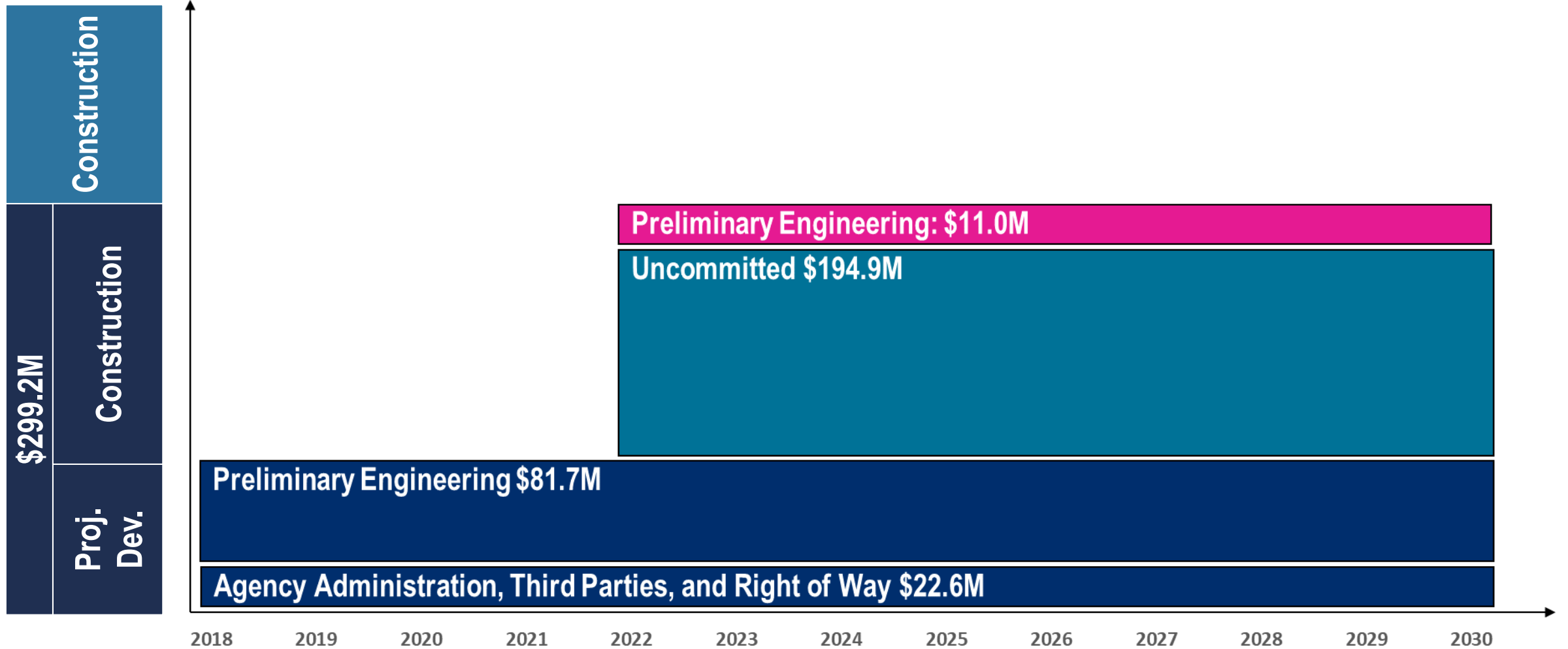
Tacoma Dome Link Extension: Authorized Project Allocation: \$299.2M

ALLOCATION \$ COMMITMENTS



Tacoma Dome Link Extension: Board approves \$11.0M with HDR Contract Modification

ALLOCATION \$ COMMITMENTS



Thank you.



 [soundtransit.org](https://www.soundtransit.org)

